

12-4-2009

Ex. 277-US-426

Unknown

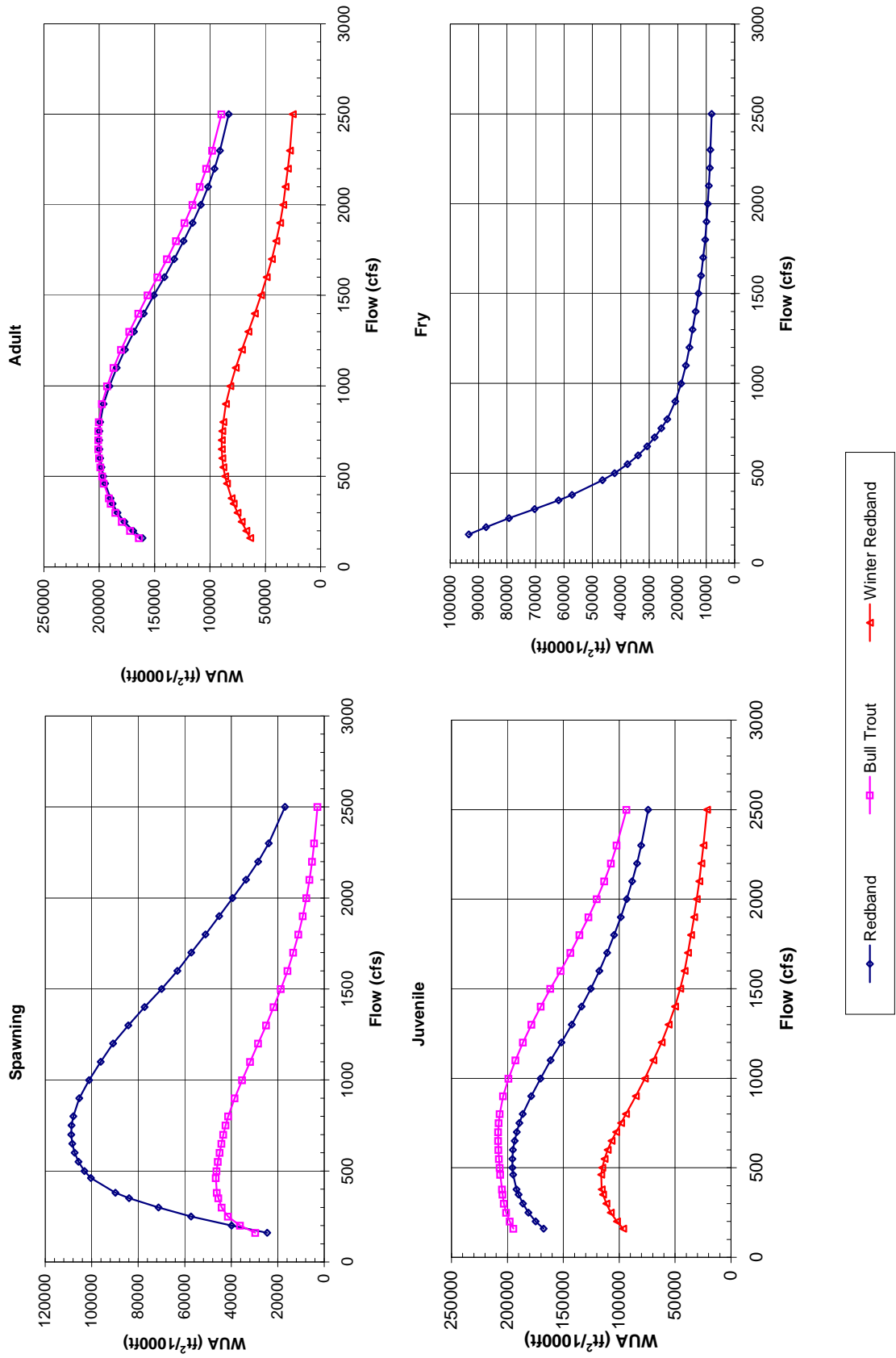
Follow this and additional works at: <https://digitalcommons.law.uidaho.edu/klamath>

Recommended Citation

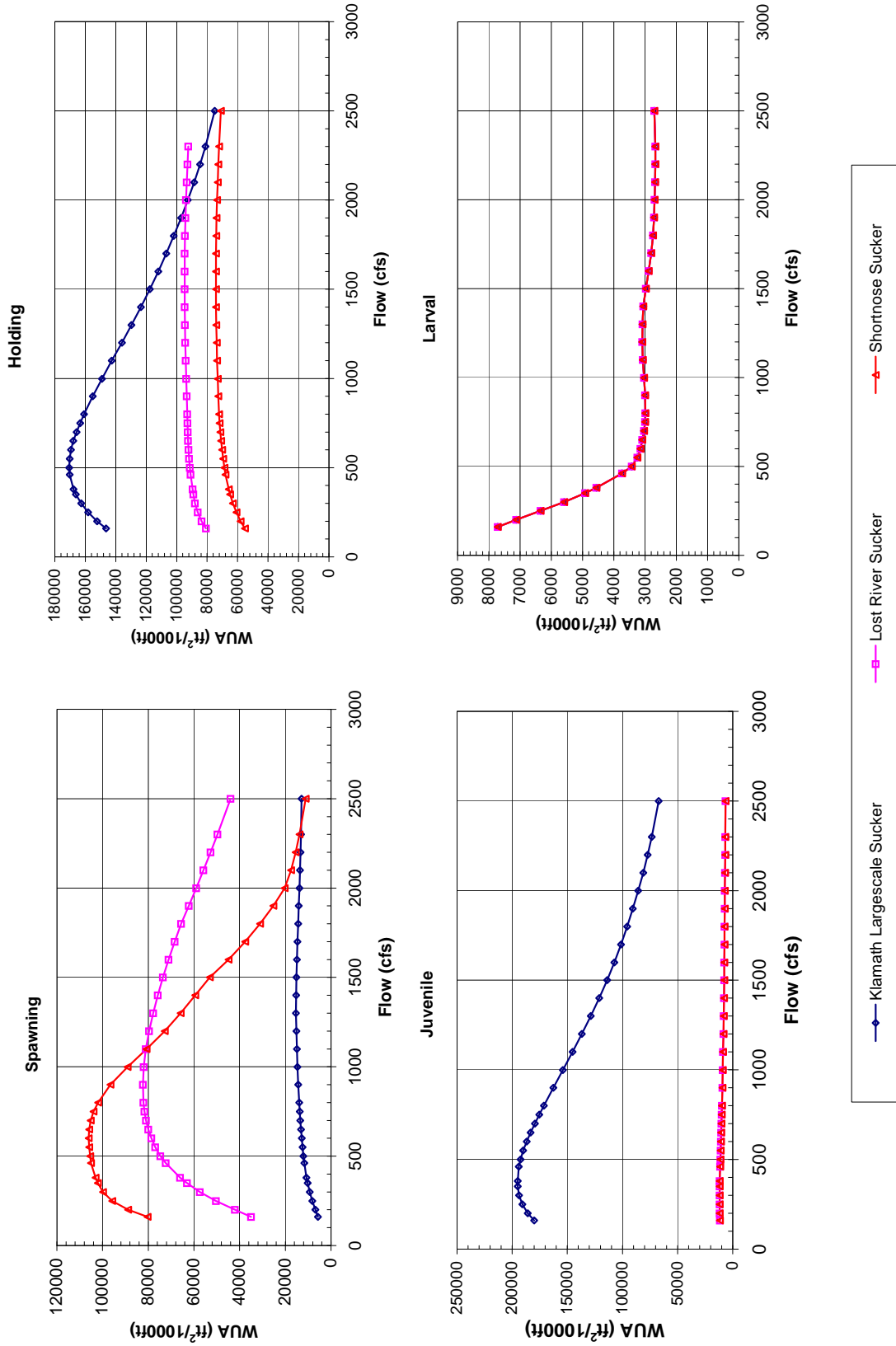
Unknown, "Ex. 277-US-426" (2009). *In re Klamath River (Klamath Tribe)*. 42.
<https://digitalcommons.law.uidaho.edu/klamath/42>

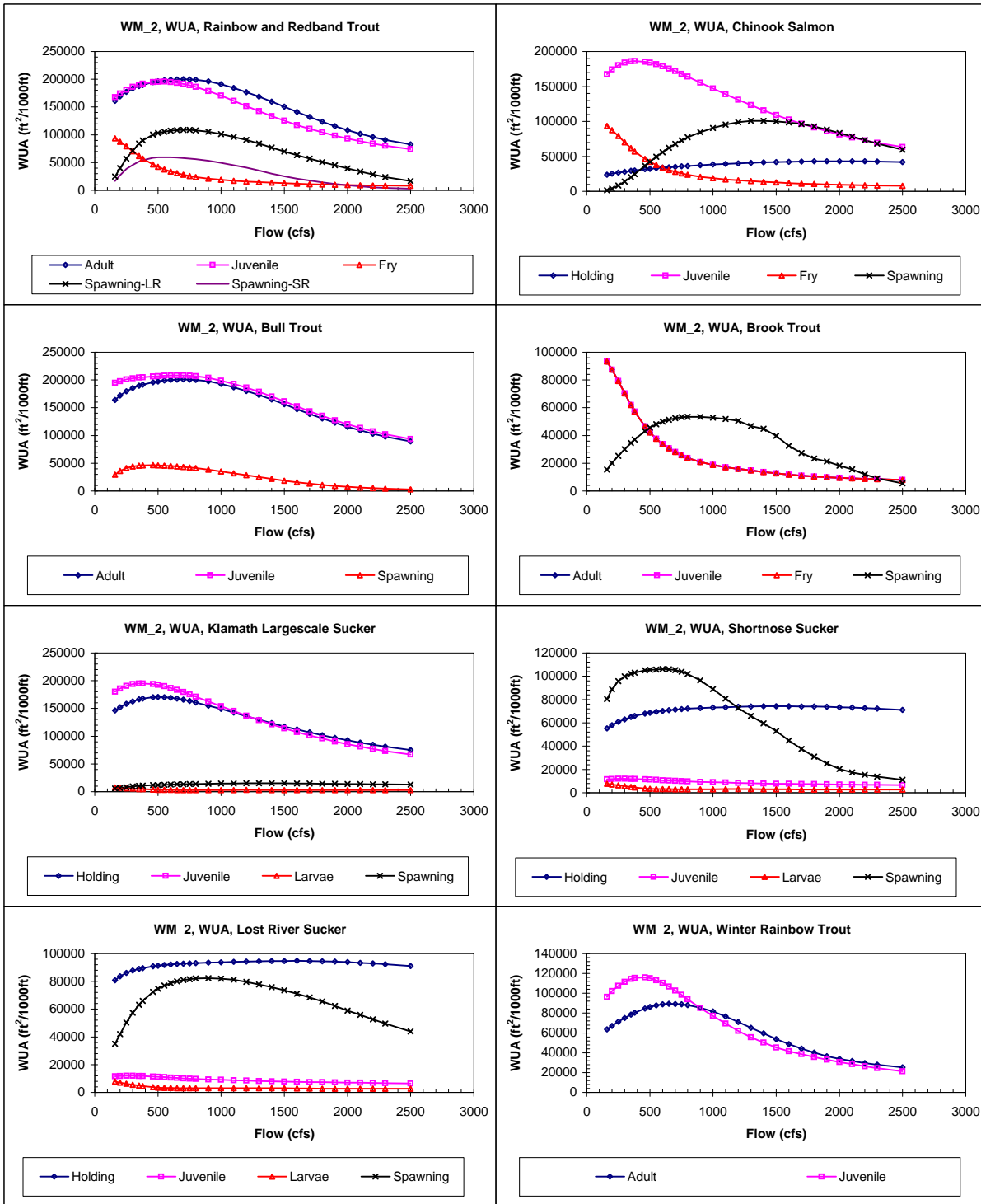
This Expert Report is brought to you for free and open access by the Hedden-Nicely at Digital Commons @ UIdaho Law. It has been accepted for inclusion in In re Klamath River (Klamath Tribe) by an authorized administrator of Digital Commons @ UIdaho Law. For more information, please contact annablaine@uidaho.edu.

Site WM 2
Priority Species Habitat - Flow Curves



**Site WM 2
Priority Species Habitat - Flow Curves**





Reach 626 Williamson River, Site 2, Composite WUA

	WUA (ft ² /1000ft)					
	Q	Adult		Spawning - Spawning -		
	(cfs)	Juvenile	Fry	Large River	Small River	
160	160942	167687	93431	24519	16407	
200	169235	174666	87423	39904	27045	
250	177246	181191	79321	57260	38387	
300	183546	186159	70358	71296	45766	
350	187906	190095	61888	83975	51687	
380	189872	191897	57137	89761	54334	
461	194637	194940	46483	100351	58470	
500	196257	195509	42203	103158	59183	
550	197965	195604	37683	105641	59559	
600	199182	194994	33900	107376	59382	
650	199804	193528	30738	108381	58827	
700	199982	191653	28101	108784	58048	
750	199826	189215	25767	108692	57073	
800	199153	186191	23723	107946	55894	
900	196122	178749	20898	105358	53103	
999	190878	170442	18823	101094	49434	
1100	184226	161249	17145	96174	45241	
1200	176863	151703	15878	90834	40684	
1300	168691	142529	14774	84259	35590	
1400	159839	133629	13741	77220	30106	
1500	150725	125285	12732	69935	25039	
1600	141160	117620	11824	63195	20865	
1700	132146	110797	11030	57122	17360	
1800	123768	104509	10381	51047	14283	
1900	115637	98513	9862	45136	11471	
2000	108270	93183	9413	39391	9080	
2100	101691	88372	9049	33599	6982	
2200	95922	84095	8737	28465	5374	
2300	90865	80301	8488	23887	4236	
2500	82923	74110	8063	16846	2907	

	WUA (ft ² /1000ft)				
	Q	Adult		Spawning	
	(cfs)	Holding	Juvenile	Fry	Spawning
160	23747	167659	93431	1502	
200	25206	174485	87423	3919	
250	26770	180360	79321	8450	
300	28106	184065	70358	13961	
350	29298	186110	61888	20354	
379.7	29942	186464	57137	24474	
460.9	31553	185456	46483	36498	
500	32228	184059	42203	42279	
550	33036	181784	37683	49286	
600	33780	178964	33900	55928	
650	34459	175580	30738	62233	
700	35104	171941	28101	67920	
750	35712	168087	25767	72805	
800	36295	164069	23723	77174	
900	37370	155640	20898	84529	
998.5	38338	147342	18823	90704	
1100	39272	139045	17145	95595	
1200	40080	130925	15878	98860	
1300	40807	123315	14774	100638	
1400	41443	116001	13741	100889	
1500	41990	109000	12732	99818	
1600	42390	102493	11824	98373	
1700	42733	96653	11030	96377	
1800	42979	91201	10381	92813	
1900	43103	86016	9862	88372	
2000	43103	81299	9413	83564	
2100	43048	76955	9049	78487	
2200	42872	72998	8737	73019	
2300	42638	69431	8488	68475	
2500	41932	63517	8063	59538	

	WUA (ft ² /1000ft)				
	Q	Adult		Spawning	
	(cfs)	Juvenile	Fry		
160	164143	194645		29684	
200	172009	197901		36145	
250	179547	201128		41459	
300	185432	203111		44046	
350	189489	204382		45567	
379.7	191333	204858		46191	
460.9	195821	206319		46626	
500	197330	206881		46269	
550	198930	207492		45719	
600	200080	208030		44981	
650	200686	208271		44181	
700	200888	208163		43381	
750	200788	207787		42447	
800	200222	206889		41278	
900	197572	203769		38537	
998.5	192917	198890		35256	
1100	186961	192805		31859	
1200	180322	186091		28396	
1300	172866	178477		24985	
1400	164728	170206		21737	
1500	156294	161575		18662	
1600	147322	152384		15803	
1700	138776	143658		13334	
1800	130710	135421		11132	
1900	122865	127414		9242	
2000	115647	120067		7665	
2100	109104	113428		6332	
2200	103218	107443		5210	
2300	98013	102154		4282	
2500	89522	93516		2838	

	WUA (ft ² /1000ft)				
	Q	Adult		Spawning	
	(cfs)	Adult	Juvenile	Fry	Spawning
160	93431	93431	93431	15423	
200	87423	87423	87423	20069	
250	79321	79321	79321	25235	
300	70358	70358	70358	30067	
350	61888	61888	61888	34508	
379.7	57137	57137	57137	37060	
460.9	46483	46483	46483	43244	
500	42203	42203	42203	45682	
550	37683	37683	37683	48164	
600	33900	33900	33900	50013	
650	30738	30738	30738	51422	
700	28101	28101	28101	52540	
750	25767	25767	25767	53210	
800	23723	23723	23723	53510	
900	20898	20898	20898	53435	
998.5	18823	18823	18823	52860	
1100	17145	17145	17145	51865	
1200	15878	15878	15878	50516	
1300	14774	14774	14774	46769	
1400	13741	13741	13741	44933	
1500	12732	12732	12732	39762	
1600	11824	11824	11824	32523	
1700	11030	11030	11030	27429	
1800	10381	10381	10381	23292	
1900	9862	9862	9862	21326	
2000	9413	9413	9413	18192	
2100	9049	9049	9049	15658	
2200	8737	8737	8737	11982	
2300	8488	8488	8488	9043	
2500	8063	8063	8063	5473	

Reach 626 Williamson River, Site 2, Composite WUA

	WUA (ft ² /1000ft)				
	Q (cfs)	Holding	Juvenile	Larvae	Spawning
Klamath Largescale Sucker	160	146271	180149	7710	5666
	200	152319	185833	7123	6845
	250	158170	190717	6348	8184
	300	162656	193746	5586	9316
	350	166145	194882	4918	10232
	379.7	167718	195041	4559	10718
	460.9	170189	193895	3736	11689
	500	170570	192435	3426	12097
	550	170315	189944	3250	12488
	600	169366	186912	3151	12801
	650	167808	183373	3087	13108
	700	165715	179449	3030	13407
	750	163364	175368	3004	13682
	800	160818	171203	2992	13936
	900	155073	162587	2997	14381
	998.5	149004	153959	3029	14683
	1100	142585	145268	3077	14945
	1200	136008	136808	3093	15191
	1300	129684	128773	3086	15325
	1400	123512	121077	3054	15302
	1500	117589	113895	2973	15132
	1600	111971	107294	2881	14891
	1700	106831	101370	2800	14640
	1800	101922	95821	2748	14360
	1900	97123	90508	2711	14085
	2000	92670	85663	2696	13781
	2100	88518	81178	2681	13549
	2200	84670	77090	2671	13296
	2300	81134	73364	2673	13091
	2500	75043	67129	2706	12923

	WUA (ft ² /1000ft)				
	Q (cfs)	Holding	Juvenile	Larvae	Spawning
Shortnose Sucker	160	55252	11540	7710	80285
	200	57982	11758	7123	88854
	250	60797	11920	6348	95792
	300	63010	11918	5586	99828
	350	64869	11819	4918	102051
	379.7	65853	11735	4559	103104
	460.9	67929	11454	3736	105075
	500	68671	11261	3426	105441
	550	69497	10986	3250	105846
	600	70230	10692	3151	106116
	650	70829	10402	3087	105897
	700	71348	10141	3030	105191
	750	71796	9922	3004	103957
	800	72178	9715	2992	101967
	900	72660	9363	2997	96544
	998.5	73073	9038	3029	89007
	1100	73461	8751	3077	80784
	1200	73754	8476	3093	72748
	1300	73989	8203	3086	65861
	1400	74172	7962	3054	59451
	1500	74247	7757	2973	53017
	1600	74247	7627	2881	44816
	1700	74147	7494	2800	37559
	1800	73994	7359	2748	31053
	1900	73772	7229	2711	25240
	2000	73468	7097	2696	20295
	2100	73069	6964	2681	17496
	2200	72668	6844	2671	15443
	2300	72186	6735	2673	13789
	2500	71067	6548	2706	11100

	WUA (ft ² /1000ft)				
	Q (cfs)	Holding	Juvenile	Larvae	Spawning
Lost River Sucker	160	80775	11540	7710	34988
	200	83569	11758	7123	42095
	250	86142	11920	6348	50304
	300	87918	11918	5586	57380
	350	88967	11819	4918	63057
	379.7	89460	11735	4559	66012
	460.9	90796	11454	3736	72356
	500	91289	11261	3426	74726
	550	91845	10986	3250	76959
	600	92242	10692	3151	78666
	650	92502	10402	3087	79974
	700	92714	10141	3030	80919
	750	92898	9922	3004	81604
	800	93084	9715	2992	82050
	900	93442	9363	2997	82281
	998.5	93748	9038	3029	81937
	1100	94059	8751	3077	81085
	1200	94331	8476	3093	79610
	1300	94549	8203	3086	77791
	1400	94688	7962	3054	75826
	1500	94763	7757	2973	73613
	1600	94782	7627	2881	71059
	1700	94669	7494	2800	68467
	1800	94481	7359	2748	65621
	1900	94225	7229	2711	62277
	2000	93871	7097	2696	59001
	2100	93397	6964	2681	55824
	2200	92925	6844	2671	52671
	2300	92367	6735	2673	49695
	2500	91086	6548	2706	43963

	WUA (ft ² /1000ft)				
	Q (cfs)	Adult	Juvenile	Fry	Spawning
Winter Rainbow Trout	160	63602	96436		
	200	67150	102133		
	250	71390	107535		
	300	75080	111591		
	350	78528	114445		
	379.7	80365	115560		
	460.9	84585	116015		
	500	86188	115220		
	550	87819	113215		
	600	88933	110345		
	650	89334	106794		
	700	89282	102672		
	750	88803	98367		
	800	88014	94016		
	900	85481	85246		
	998.5	81702	77130		
	1100	76666	69409		
	1200	71083	62074		
	1300	65275	55748		
	1400	59537	50186		
	1500	53799	45367		
	1600	48716	41606		
	1700	44173	38503		
	1800	40184	35674		
	1900	36587	33070		
	2000	33904	30732		
	2100	31624	28503		
	2200	29642	26449		
	2300	27867	24588		
	2500	25198	21367		