

12-4-2009

Ex. 277-US-450

Unknown

Follow this and additional works at: <https://digitalcommons.law.uidaho.edu/klamath>

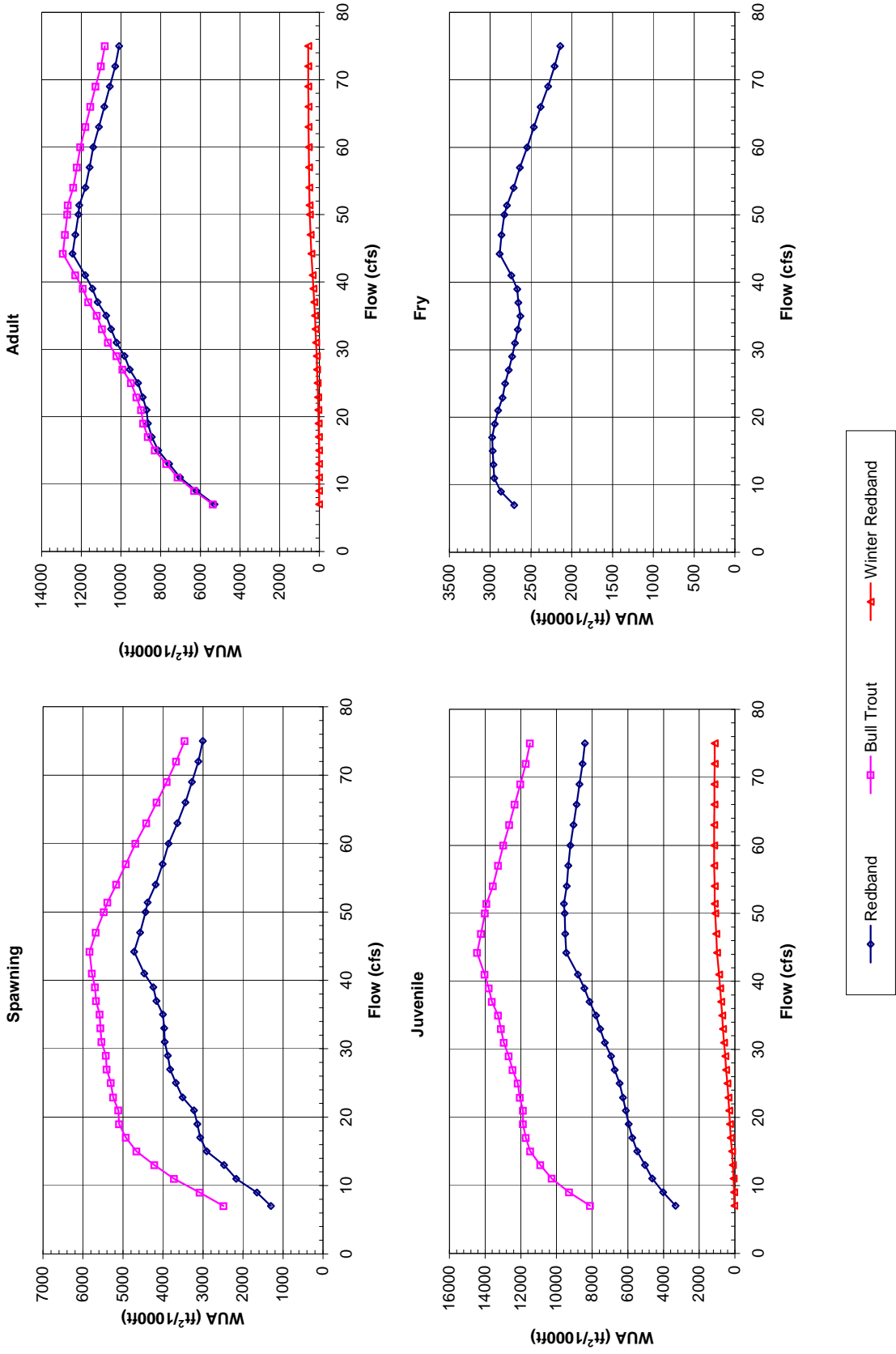
---

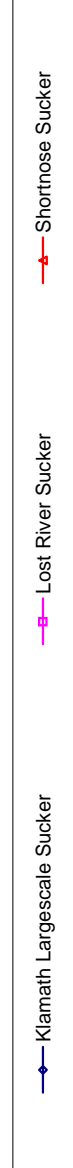
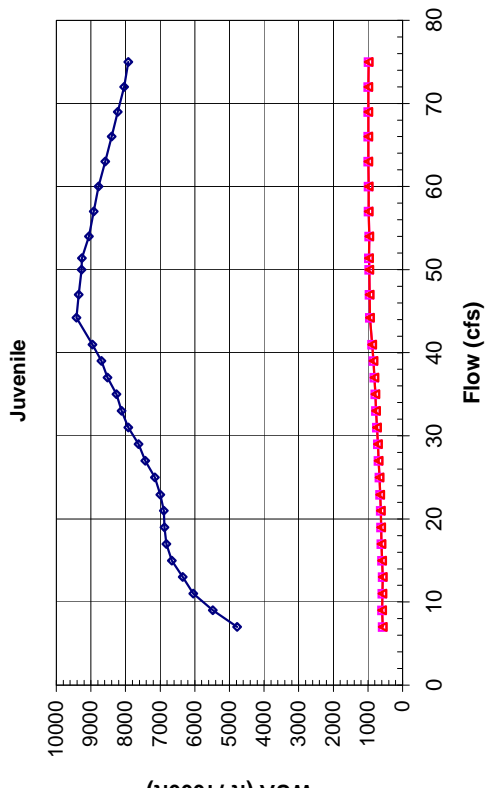
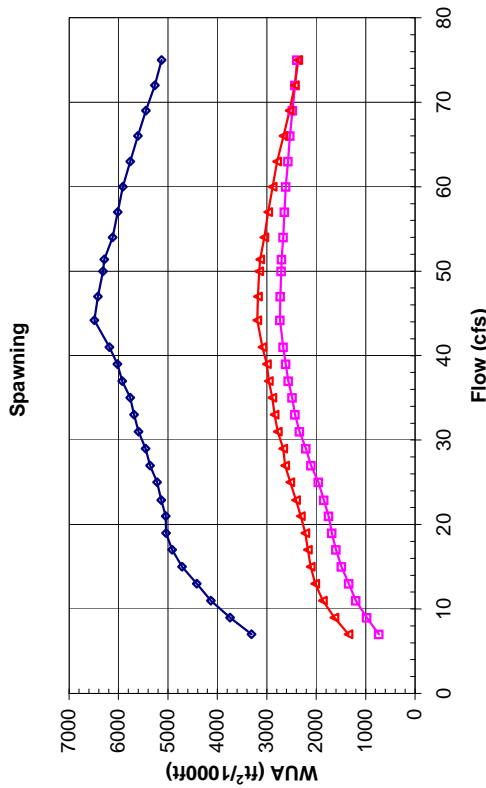
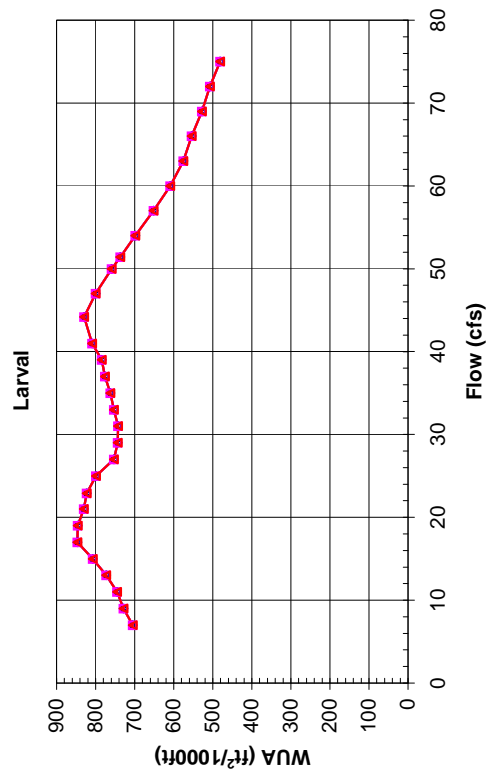
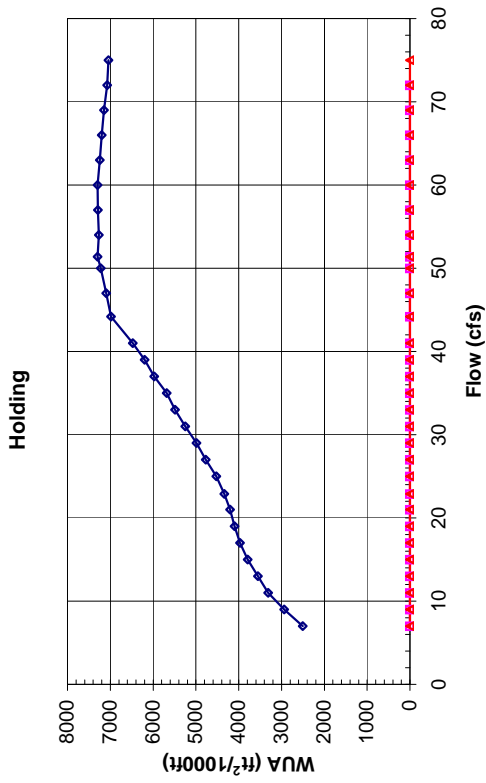
### Recommended Citation

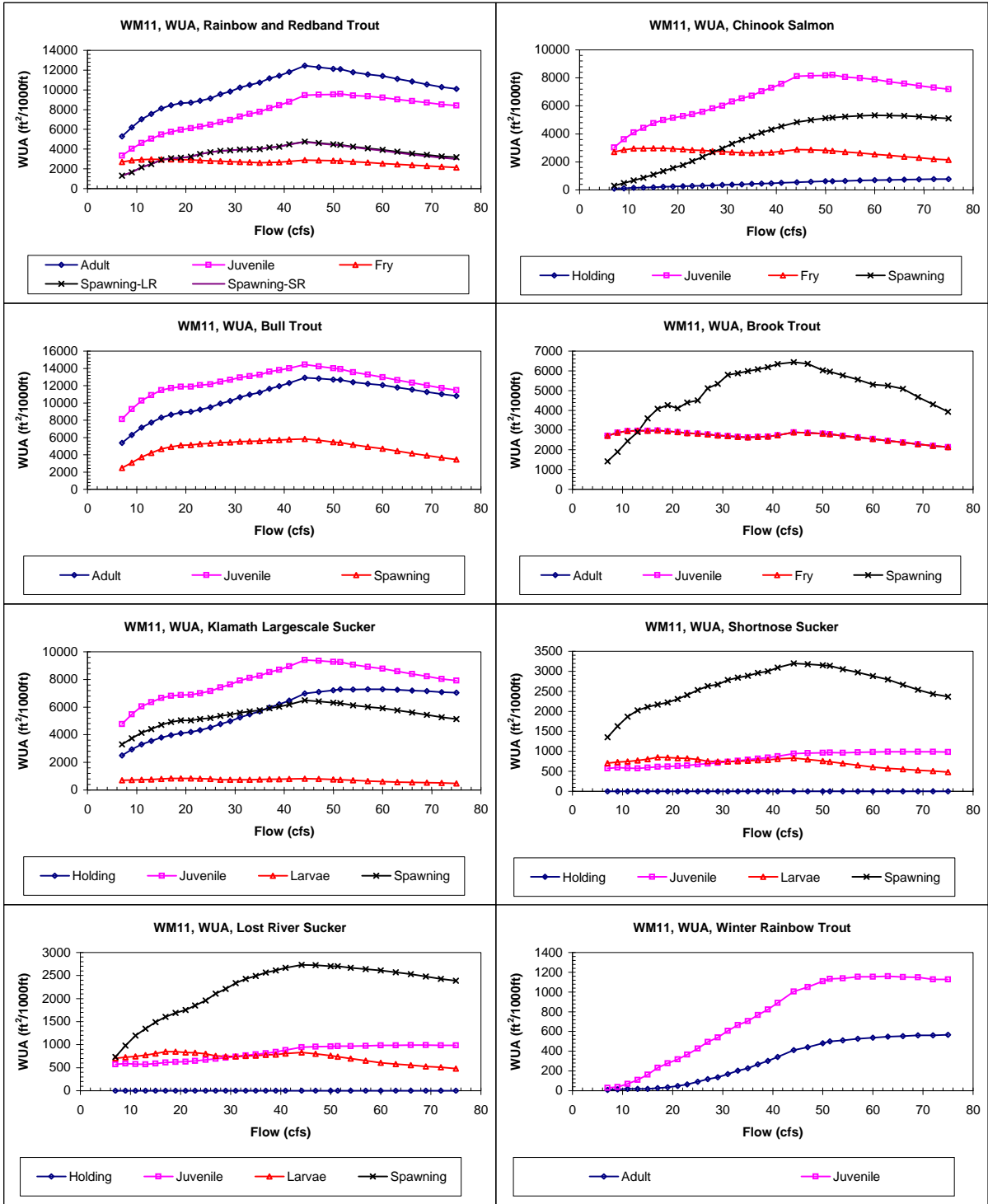
Unknown, "Ex. 277-US-450" (2009). *In re Klamath River (Klamath Tribe)*. 66.  
<https://digitalcommons.law.uidaho.edu/klamath/66>

This Expert Report is brought to you for free and open access by the Hedden-Nicely at Digital Commons @ UIdaho Law. It has been accepted for inclusion in In re Klamath River (Klamath Tribe) by an authorized administrator of Digital Commons @ UIdaho Law. For more information, please contact [annablaine@uidaho.edu](mailto:annablaine@uidaho.edu).

Site WM 11  
Priority Species Habitat - Flow Curves







**Claim Reach 635 Williamson River, Site 11, Composite WUA**

	WUA (ft <sup>2</sup> /1000ft)				
	Q	Adult	Juvenile	Spawning - Spawning -	
	(cfs)			Large River	Small River
7	5294	3329	2706	1300	1300
9	6206	4025	2867	1652	1652
11	7030	4634	2950	2166	2166
13	7571	5040	2960	2475	2475
15	8125	5472	2969	2907	2907
17	8446	5754	2976	3069	3069
19	8645	5955	2945	3139	3139
21	8704	6112	2903	3225	3225
22.9	8909	6269	2847	3512	3512
25	9144	6462	2816	3678	3678
27	9563	6738	2773	3817	3817
29	9826	6945	2731	3879	3879
31	10228	7283	2695	3957	3957
33	10505	7553	2663	3968	3968
35	10751	7781	2631	4001	4001
37	11175	8152	2656	4166	4166
39	11441	8437	2669	4249	4243
41	11810	8801	2741	4478	4465
44.2	12441	9453	2882	4746	4717
47	12299	9505	2861	4610	4574
50	12140	9535	2825	4479	4433
51.4	12105	9580	2793	4434	4382
54	11791	9426	2712	4244	4186
57	11581	9339	2637	4077	4008
60	11395	9226	2549	3937	3858
63	11118	9043	2464	3735	3639
66	10843	8871	2381	3554	3437
69	10566	8708	2289	3412	3278
72	10287	8533	2210	3267	3117
75	10095	8411	2141	3170	3002

	WUA (ft <sup>2</sup> /1000ft)				
	Q	Holding	Juvenile	Fry Spawning	
	(cfs)			Fry	Spawning
7	89	3031	2706	307	
9	118	3612	2867	488	
11	145	4106	2950	677	
13	170	4424	2960	858	
15	196	4766	2969	1101	
17	219	4990	2976	1335	
19	241	5136	2945	1554	
21	261	5267	2903	1773	
22.9	281	5403	2847	2051	
25	304	5575	2816	2359	
27	328	5817	2773	2685	
29	351	6004	2731	2961	
31	378	6299	2695	3289	
33	403	6535	2663	3574	
35	426	6727	2631	3822	
37	453	7036	2656	4091	
39	479	7279	2669	4317	
41	506	7579	2741	4544	
44.2	553	8119	2882	4831	
47	582	8148	2861	4997	
50	613	8166	2825	5113	
51.4	628	8203	2793	5159	
54	648	8065	2712	5230	
57	673	7985	2637	5296	
60	695	7886	2549	5334	
63	715	7729	2464	5311	
66	734	7581	2381	5297	
69	750	7443	2289	5228	
72	764	7300	2210	5157	
75	780	7200	2141	5095	

	WUA (ft <sup>2</sup> /1000ft)			
	Q	Adult	Juvenile	Spawning
	(cfs)			
7	5369	8122		2487
9	6303	9292		3082
11	7144	10266		3724
13	7713	10903		4215
15	8293	11466		4663
17	8649	11711		4929
19	8883	11880		5098
21	8983	11875		5119
22.9	9219	12047		5244
25	9489	12163		5305
27	9932	12459		5405
29	10225	12670		5426
31	10652	12947		5535
33	10954	13106		5562
35	11220	13264		5580
37	11648	13613		5676
39	11929	13788		5700
41	12302	14023		5773
44.2	12929	14442		5836
47	12827	14232		5677
50	12704	14012		5480
51.4	12683	13917		5390
54	12406	13556		5170
57	12221	13272		4929
60	12053	12987		4688
63	11798	12652		4417
66	11543	12338		4157
69	11278	12027		3903
72	11010	11713		3673
75	10818	11481		3459

	WUA (ft <sup>2</sup> /1000ft)			
	Q	Adult	Juvenile	Spawning
	(cfs)			
7	2706	2706	2706	1422
9	2867	2867	2867	1893
11	2950	2950	2950	2438
13	2960	2960	2960	2904
15	2969	2969	2969	3590
17	2976	2976	2976	4079
19	2945	2945	2945	4265
21	2903	2903	2903	4106
22.9	2847	2847	2847	4391
25	2816	2816	2816	4500
27	2773	2773	2773	5120
29	2731	2731	2731	5346
31	2695	2695	2695	5801
33	2663	2663	2663	5884
35	2631	2631	2631	5978
37	2656	2656	2656	6076
39	2669	2669	2669	6181
41	2741	2741	2741	6348
44.2	2882	2882	2882	6440
47	2861	2861	2861	6365
50	2825	2825	2825	6018
51.4	2793	2793	2793	5956
54	2712	2712	2712	5768
57	2637	2637	2637	5561
60	2549	2549	2549	5304
63	2464	2464	2464	5251
66	2381	2381	2381	5089
69	2289	2289	2289	4677
72	2210	2210	2210	4305
75	2141	2141	2141	3930

Claim Reach 635 Williamson River, Site 11, Composite WUA

	WUA (ft <sup>2</sup> /1000ft)				
	Q (cfs)	Holding	Juvenile	Larvae	Spawning
Klamath Largescale Sucker	7	2505	4774	705	3308
	9	2940	5481	728	3744
	11	3311	6043	745	4132
	13	3553	6354	773	4416
	15	3792	6665	807	4711
	17	3972	6818	847	4914
	19	4094	6878	846	5038
	21	4201	6896	830	5048
	22.9	4339	7000	823	5137
	25	4521	7156	799	5216
	27	4768	7431	753	5363
	29	4983	7628	743	5451
	31	5251	7916	742	5595
	33	5486	8116	754	5688
	35	5684	8261	763	5766
	37	5973	8522	777	5922
	39	6198	8701	784	6024
	41	6475	8958	809	6181
	44.2	6981	9415	829	6486
	47	7096	9350	800	6417
	50	7222	9270	759	6313
	51.4	7298	9262	737	6288
	54	7268	9059	698	6121
	57	7293	8916	652	6019
	60	7294	8782	609	5912
	63	7247	8588	576	5761
	66	7201	8402	554	5610
69	7149	8222	528	5443	
72	7072	8043	507	5262	
75	7045	7919	481	5126	

	WUA (ft <sup>2</sup> /1000ft)				
	Q (cfs)	Holding	Juvenile	Larvae	Spawning
Shorthnose Sucker	7	0	575	705	1350
	9	0	590	728	1630
	11	0	580	745	1862
	13	0	571	773	2021
	15	0	592	807	2113
	17	0	615	847	2172
	19	0	623	846	2222
	21	0	632	830	2310
	22.9	0	646	823	2409
	25	0	670	799	2529
	27	0	694	753	2631
	29	0	715	743	2669
	31	0	740	742	2780
	33	0	768	754	2841
	35	0	788	763	2886
	37	0	815	777	2959
	39	0	842	784	2999
	41	0	879	809	3089
	44.2	0	944	829	3194
	47	0	955	800	3178
	50	0	964	759	3154
	51.4	0	970	737	3135
	54	0	966	698	3050
	57	0	976	652	2971
	60	0	984	609	2883
	63	0	986	576	2793
	66	0	990	554	2661
69	0	990	528	2535	
72	0	987	507	2433	
75	0	982	481	2364	

	WUA (ft <sup>2</sup> /1000ft)				
	Q (cfs)	Holding	Juvenile	Larvae	Spawning
Lost River Sucker	7	0	575	705	731
	9	0	590	728	979
	11	0	580	745	1195
	13	0	571	773	1343
	15	0	592	807	1491
	17	0	615	847	1601
	19	0	623	846	1686
	21	0	632	830	1751
	22.9	0	646	823	1848
	25	0	670	799	1958
	27	0	694	753	2107
	29	0	715	743	2208
	31	0	740	742	2339
	33	0	768	754	2427
	35	0	788	763	2489
	37	0	815	777	2564
	39	0	842	784	2613
	41	0	879	809	2669
	44.2	0	944	829	2733
	47	0	955	800	2723
	50	0	964	759	2705
	51.4	0	970	737	2701
	54	0	966	698	2669
	57	0	976	652	2642
	60	0	984	609	2614
	63	0	986	576	2572
	66	0	990	554	2529
69	0	990	528	2479	
72	0	987	507	2429	
75	0	982	481	2388	

	WUA (ft <sup>2</sup> /1000ft)		
	Q (cfs)	Adult	Juvenile
Winter Rainbow Trout	7	8	29
	9	13	37
	11	17	70
	13	18	110
	15	19	164
	17	26	232
	19	34	278
	21	49	318
	22.9	64	366
	25	90	428
	27	116	493
	29	135	541
	31	167	606
	33	202	665
	35	228	705
	37	267	768
	39	302	823
	41	342	890
	44.2	411	1004
	47	440	1051
	50	481	1108
	51.4	500	1133
	54	510	1139
	57	527	1155
	60	537	1155
	63	547	1160
	66	553	1153
69	562	1148	
72	560	1129	
75	567	1127	