

12-8-2009

Ex. 279-US-433

Unknown

Follow this and additional works at: <https://digitalcommons.law.uidaho.edu/klamath>

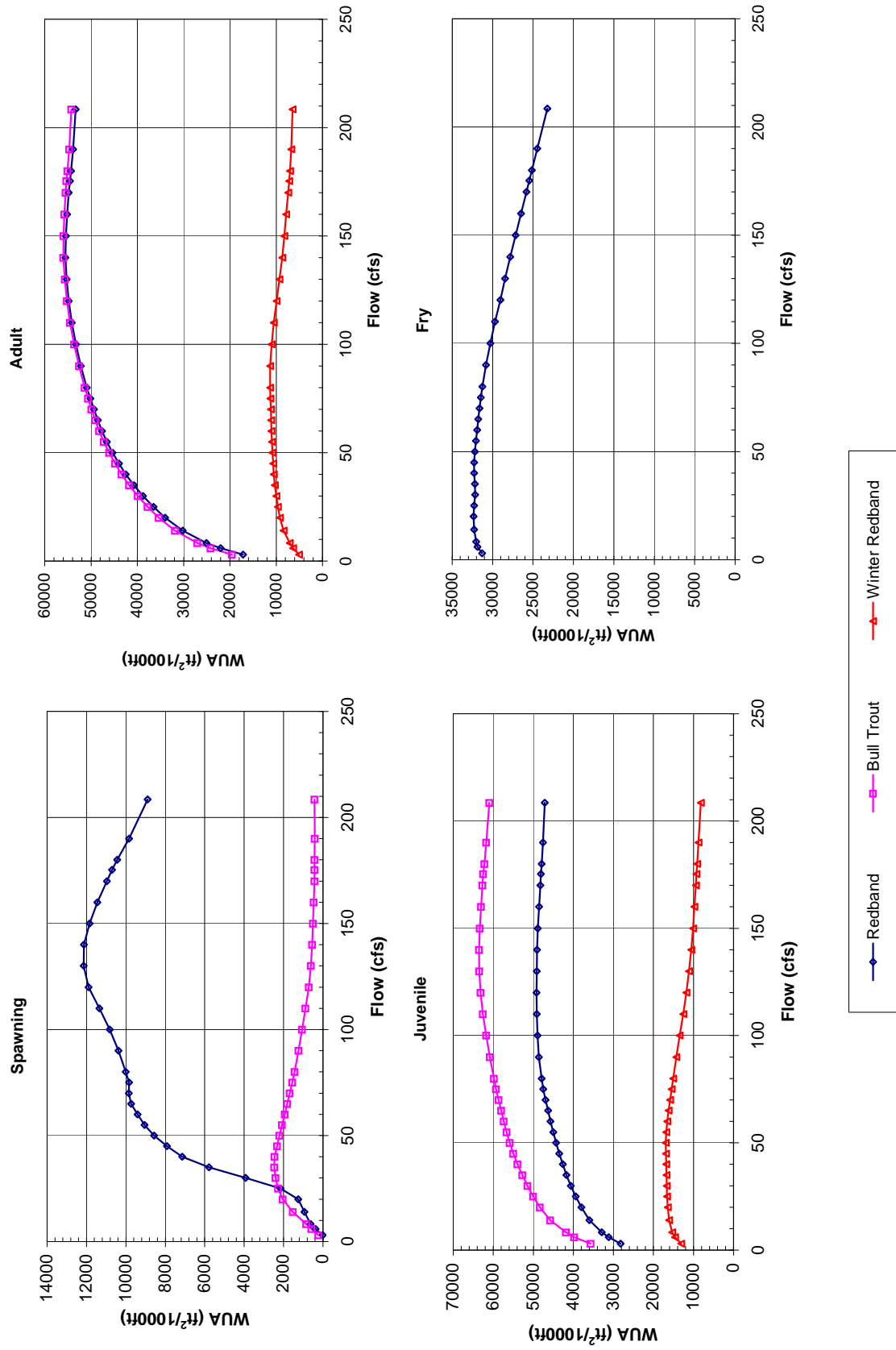
---

### Recommended Citation

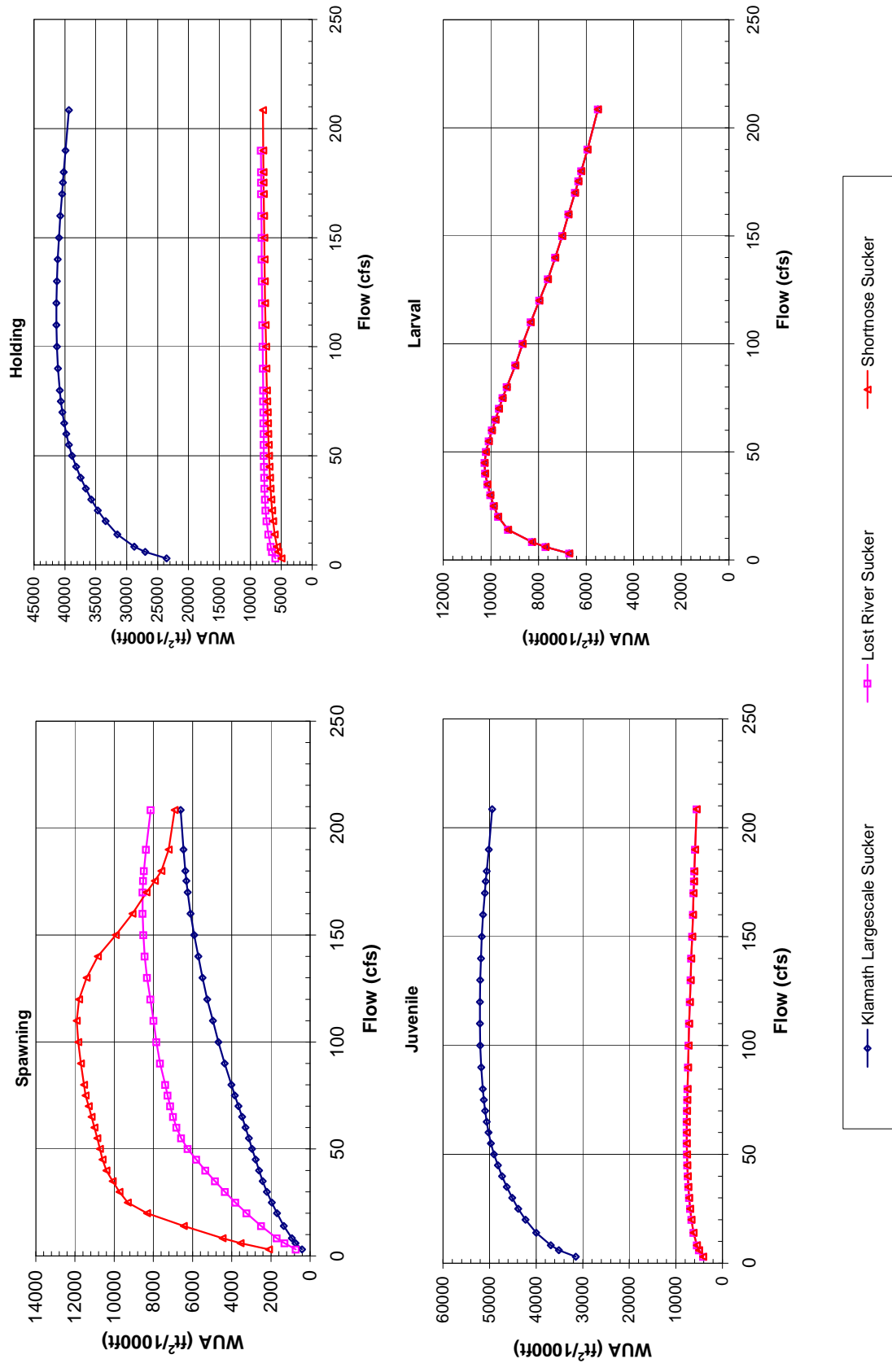
Unknown, "Ex. 279-US-433" (2009). *In re Klamath River (Klamath Tribe)*. 114.  
<https://digitalcommons.law.uidaho.edu/klamath/114>

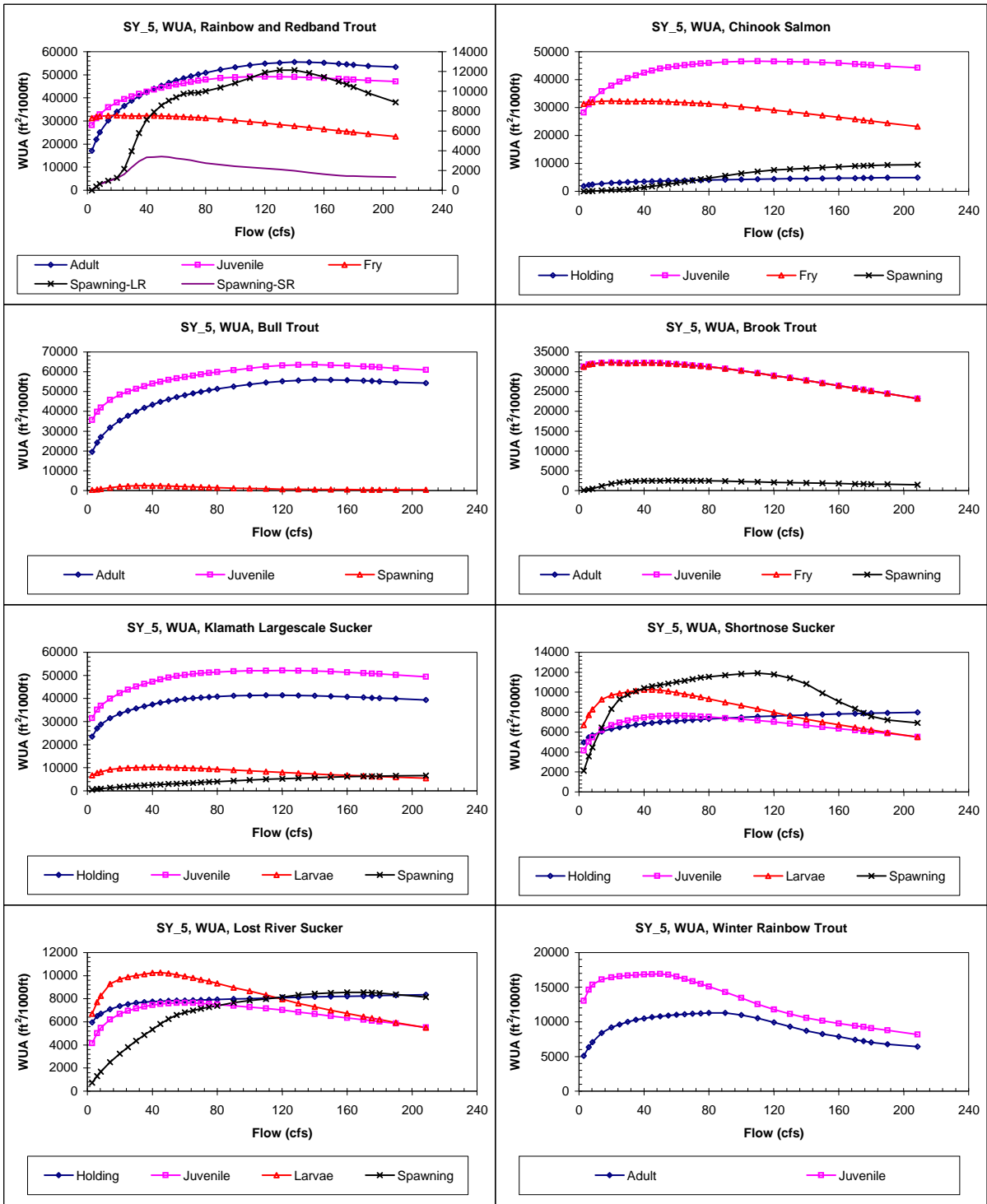
This Expert Report is brought to you for free and open access by the Hedden-Nicely at Digital Commons @ UIdaho Law. It has been accepted for inclusion in In re Klamath River (Klamath Tribe) by an authorized administrator of Digital Commons @ UIdaho Law. For more information, please contact [annablaine@uidaho.edu](mailto:annablaine@uidaho.edu).

# Site SY 5 Priority Species Habitat - Flow Curves



# Site SY 5 Priority Species Habitat - Flow Curves





**Claim Reach 662 Sycan River, Site 5, Composite WUA**

	Q (cfs)	WUA (ft <sup>2</sup> /1000ft)				
		Adult	Juvenile	Fry	Spawning -	
					Large River	Small River
3	17163	28197	31305	9	9	
6	22026	31162	31874	377	367	
8.3	25082	32900	32027	629	603	
14	30211	35971	32281	946	906	
20	33978	37995	32344	1257	1197	
25	36491	39432	32283	2155	1631	
30	38780	40644	32165	3931	2324	
35	40750	41704	32189	5778	2937	
40	42485	42654	32293	7146	3317	
45	43976	43521	32287	7913	3364	
50	45331	44322	32187	8564	3409	
55	46555	45045	32059	9054	3349	
60	47623	45714	31916	9404	3226	
65	48531	46315	31780	9732	3133	
70	49384	46930	31631	9855	3027	
75	50163	47500	31470	9836	2867	
80	50902	47930	31280	10005	2753	
90	52187	48592	30808	10375	2573	
100	53234	48938	30271	10820	2432	
110	54156	49113	29693	11342	2319	
120	54833	49178	29039	11894	2216	
130	55258	49131	28458	12139	2093	
140	55525	49045	27816	12131	1958	
150	55427	48856	27142	11846	1790	
160	55167	48581	26479	11446	1628	
170	54809	48252	25803	10964	1491	
175.3	54566	48074	25456	10696	1448	
180	54295	47915	25145	10438	1427	
190	53861	47619	24459	9834	1380	
208.5	53342	47159	23216	8894	1334	

	Q (cfs)	WUA (ft <sup>2</sup> /1000ft)			
		Holding	Juvenile	Fry	Spawning
6	2268	31162	31874	31	
8.3	2445	32887	32027	99	
14	2756	35876	32281	320	
20	2987	37834	32344	510	
25	3142	39240	32283	603	
30	3274	40436	32165	707	
35	3389	41480	32189	1011	
40	3492	42412	32293	1406	
45	3584	43250	32287	1772	
50	3667	43925	32187	2145	
55	3744	44421	32059	2528	
60	3814	44819	31916	2975	
65	3881	45154	31780	3414	
70	3943	45471	31631	3859	
75	4001	45748	31470	4300	
80	4056	45986	31280	4736	
90	4157	46314	30808	5595	
100	4249	46518	30271	6403	
110	4335	46582	29693	7095	
120	4414	46555	29039	7618	
130	4488	46457	28458	7939	
140	4559	46336	27816	8223	
150	4627	46164	27142	8488	
160	4692	45924	26479	8743	
170	4753	45553	25803	9009	
175.3	4784	45356	25456	9151	
180	4812	45164	25145	9275	
190	4868	44811	24459	9457	
208.5	4943	44210	23216	9561	

	Q (cfs)	WUA (ft <sup>2</sup> /1000ft)			
		Adult	Juvenile	Fry	Spawning
6	24205	39769	590		
8.3	27046	41868	847		
14	31850	45785	1527		
20	35398	48392	2044		
25	37767	50041	2274		
30	39914	51432	2403		
35	41764	52743	2467		
40	43384	53971	2457		
45	44787	55023	2334		
50	46062	55909	2207		
55	47221	56671	2075		
60	48236	57369	1942		
65	49104	58045	1815		
70	49916	58688	1687		
75	50661	59295	1557		
80	51368	59851	1442		
90	52605	60854	1248		
100	53634	61788	1064		
110	54546	62621	890		
120	55229	63199	726		
130	55677	63485	613		
140	55982	63592	552		
150	55954	63384	506		
160	55772	63072	467		
170	55500	62735	435		
175.3	55306	62518	429		
180	55082	62239	425		
190	54714	61737	419		
208.5	54250	61013	432		

	Q (cfs)	WUA (ft <sup>2</sup> /1000ft)			
		Adult	Juvenile	Fry	Spawning
6	31874	31874	31874	290	
8.3	32027	32027	32027	452	
14	32281	32281	32281	1135	
20	32344	32344	32344	1706	
25	32283	32283	32283	2034	
30	32165	32165	32165	2276	
35	32189	32189	32189	2383	
40	32293	32293	32293	2459	
45	32287	32287	32287	2486	
50	32187	32187	32187	2486	
55	32059	32059	32059	2516	
60	31916	31916	31916	2523	
65	31780	31780	31780	2464	
70	31631	31631	31631	2437	
75	31470	31470	31470	2460	
80	31280	31280	31280	2470	
90	30808	30808	30808	2407	
100	30271	30271	30271	2277	
110	29693	29693	29693	2194	
120	29039	29039	29039	2069	
130	28458	28458	28458	2002	
140	27816	27816	27816	1944	
150	27142	27142	27142	1873	
160	26479	26479	26479	1783	
170	25803	25803	25803	1676	
175.3	25456	25456	25456	1638	
180	25145	25145	25145	1616	
190	24459	24459	24459	1567	
208.5	23216	23216	23216	1488	

Claim Reach 662 Sycan River, Site 5, Composite WUA

	Q (cfs)	WUA (ft <sup>2</sup> /1000ft)			
		Holding	Juvenile	Larvae	Spawning
Klamath Largescale Sucker	3	23550	31486	6702	408
	6	27028	35097	7706	743
	8.3	28761	36862	8265	937
	14	31510	39962	9275	1339
	20	33415	42271	9691	1683
	25	34683	43817	9881	1958
	30	35716	45145	10023	2204
	35	36625	46295	10137	2423
	40	37445	47281	10239	2609
	45	38172	48200	10256	2785
	50	38835	49036	10206	2959
	55	39363	49712	10089	3129
	60	39783	50234	9951	3302
	65	40110	50614	9804	3474
	70	40397	50943	9655	3653
	75	40643	51236	9504	3839
	80	40839	51467	9334	4014
	90	41127	51793	8970	4362
	100	41305	51999	8659	4685
	110	41372	52063	8330	4965
120	41381	52086	7967	5246	
130	41297	51999	7601	5490	
140	41150	51857	7293	5708	
150	40952	51648	7001	5913	
160	40726	51373	6735	6103	
170	40467	51018	6462	6248	
175.3	40323	50812	6324	6319	
180	40178	50603	6198	6367	
190	39881	50173	5940	6466	
208.5	39365	49419	5498	6613	

	Q (cfs)	WUA (ft <sup>2</sup> /1000ft)			
		Holding	Juvenile	Larvae	Spawning
Shortnose Sucker	3	4960	4154	6702	2106
	6	5465	5029	7706	3555
	8.3	5690	5466	8265	4469
	14	6061	6197	9275	6451
	20	6307	6674	9691	8317
	25	6469	6952	9881	9305
	30	6606	7164	10023	9737
	35	6726	7333	10137	10084
	40	6832	7456	10239	10402
	45	6916	7544	10256	10590
	50	6993	7605	10206	10727
	55	7057	7641	10089	10865
	60	7115	7650	9951	11003
	65	7169	7637	9804	11153
	70	7220	7607	9655	11303
	75	7269	7561	9504	11462
	80	7316	7516	9334	11542
	90	7400	7400	8970	11701
	100	7474	7279	8659	11834
	110	7543	7165	8330	11914
120	7608	7017	7967	11788	
130	7670	6849	7601	11403	
140	7725	6684	7293	10832	
150	7771	6500	7001	9913	
160	7815	6346	6735	9063	
170	7856	6186	6462	8345	
175.3	7876	6096	6324	7930	
180	7892	6021	6198	7590	
190	7928	5854	5940	7214	
208.5	7981	5528	5498	6918	

	Q (cfs)	WUA (ft <sup>2</sup> /1000ft)			
		Holding	Juvenile	Larvae	Spawning
Lost River Sucker	3	5961	4154	6702	731
	6	6496	5029	7706	1308
	8.3	6710	5466	8265	1697
	14	7090	6197	9275	2504
	20	7371	6674	9691	3245
	25	7534	6952	9881	3815
	30	7642	7164	10023	4348
	35	7714	7333	10137	4855
	40	7752	7456	10239	5341
	45	7788	7544	10256	5816
	50	7820	7605	10206	6253
	55	7838	7641	10089	6582
	60	7857	7650	9951	6818
	65	7877	7637	9804	6992
	70	7897	7607	9655	7135
	75	7917	7561	9504	7272
	80	7938	7516	9334	7398
	90	7978	7400	8970	7655
	100	8015	7279	8659	7839
	110	8052	7165	8330	7994
120	8089	7017	7967	8155	
130	8126	6849	7601	8319	
140	8161	6684	7293	8441	
150	8192	6500	7001	8509	
160	8221	6346	6735	8555	
170	8247	6186	6462	8547	
175.3	8260	6096	6324	8523	
180	8271	6021	6198	8485	
190	8298	5854	5940	8378	
208.5	8345	5528	5498	8142	

	Q (cfs)	WUA (ft <sup>2</sup> /1000ft)			
		Adult	Juvenile	Fry	Spawning
Winter Rainbow Trout	3	5095	13051		
	6	6361	14650		
	8.3	7086	15354		
	14	8417	16106		
	20	9195	16411		
	25	9632	16583		
	30	9996	16687		
	35	10305	16762		
	40	10508	16833		
	45	10668	16891		
	50	10812	16925		
	55	10928	16795		
	60	11022	16541		
	65	11097	16203		
	70	11164	15841		
	75	11226	15476		
	80	11287	15093		
	90	11283	14308		
	100	10984	13446		
	110	10533	12538		
120	9943	11769			
130	9321	11135			
140	8704	10557			
150	8233	10135			
160	7853	9774			
170	7430	9433			
175.3	7207	9260			
180	7032	9103			
190	6766	8768			
208.5	6437	8169			