

12-8-2009

Ex. 279-US-447

Unknown

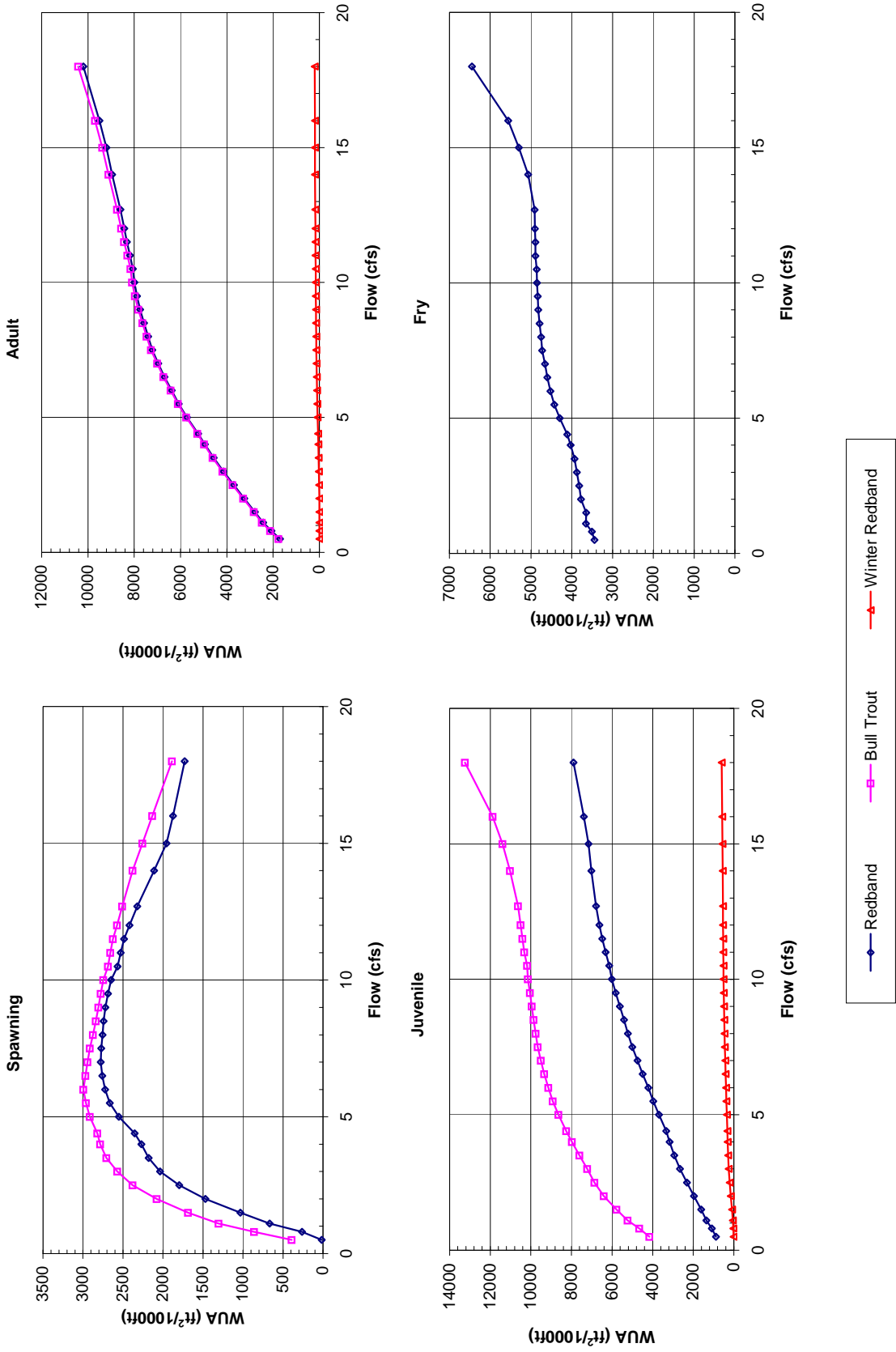
Follow this and additional works at: <https://digitalcommons.law.uidaho.edu/klamath>

Recommended Citation

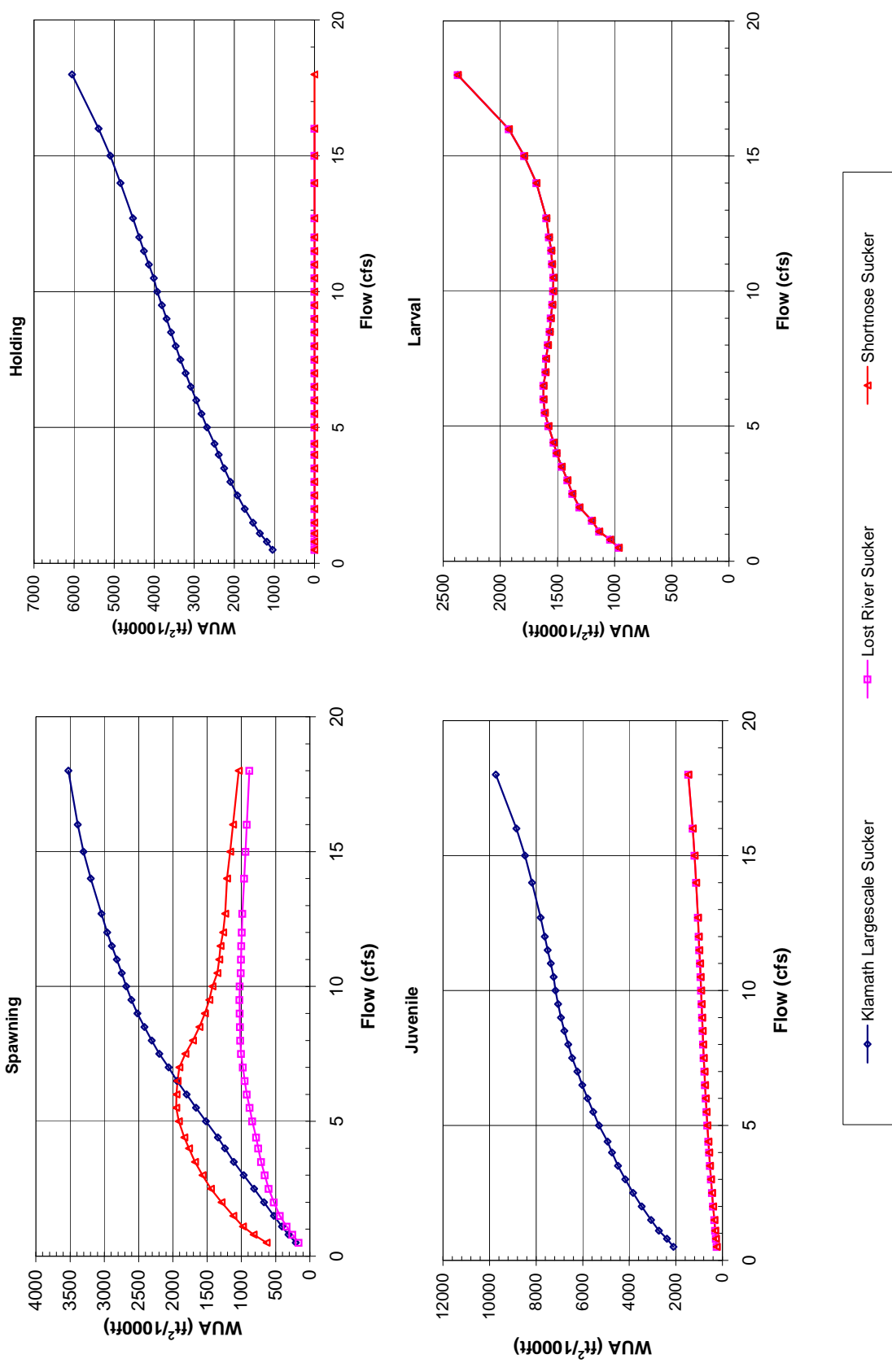
Unknown, "Ex. 279-US-447" (2009). *In re Klamath River (Klamath Tribe)*. 128.
<https://digitalcommons.law.uidaho.edu/klamath/128>

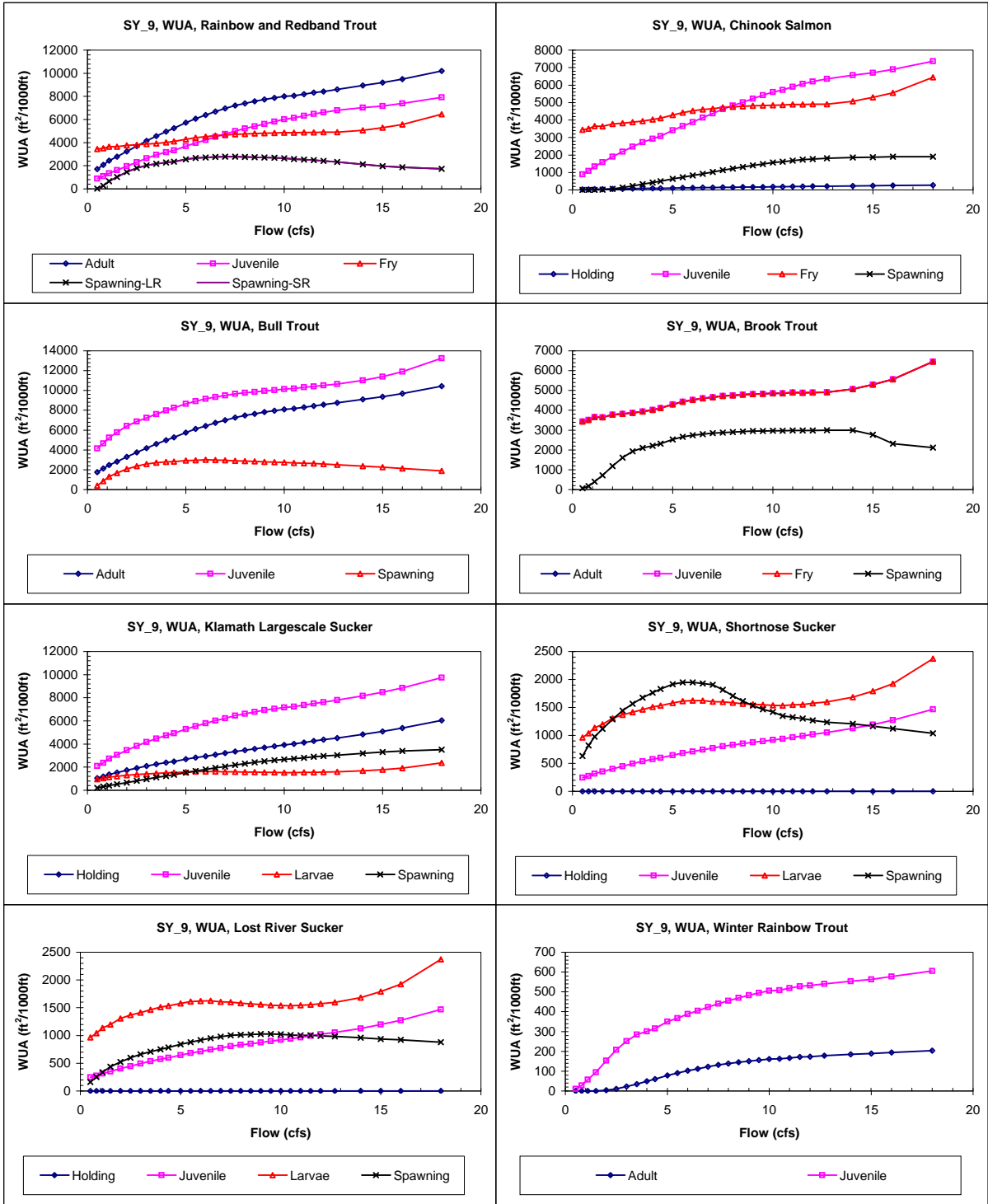
This Expert Report is brought to you for free and open access by the Hedden-Nicely at Digital Commons @ UIdaho Law. It has been accepted for inclusion in In re Klamath River (Klamath Tribe) by an authorized administrator of Digital Commons @ UIdaho Law. For more information, please contact annablaine@uidaho.edu.

Site SY 9
Priority Species Habitat - Flow Curves



Site SY 9 Priority Species Habitat - Flow Curves





Claim Reach 666 Sycan River, Site 9, Composite WUA

	WUA (ft ² /1000ft)				
	Q (cfs)	Spawning - Spawning -			
		Adult	Juvenile	Fry	Large River
0.5	1702	886	3440	18	18
0.8	2072	1090	3507	263	263
1.1	2432	1346	3655	667	667
1.5	2782	1609	3644	1031	1031
2	3248	1968	3774	1470	1470
2.5	3699	2315	3820	1798	1798
3	4146	2654	3873	2035	2035
3.5	4568	2936	3934	2178	2178
4	4946	3160	4025	2271	2271
4.4	5238	3336	4109	2355	2355
5	5717	3693	4293	2551	2551
5.5	6073	3964	4425	2664	2664
6	6386	4216	4521	2724	2724
6.5	6694	4486	4600	2760	2760
7	6961	4745	4654	2778	2778
7.5	7215	5001	4727	2773	2773
8	7402	5215	4753	2754	2754
8.5	7578	5415	4787	2742	2742
9	7742	5618	4820	2720	2720
9.5	7879	5824	4836	2688	2688
10	7998	6015	4852	2647	2647
10.5	8056	6132	4857	2569	2569
11	8184	6317	4891	2527	2527
11.5	8317	6489	4890	2487	2487
12	8428	6627	4903	2417	2417
12.7	8601	6789	4910	2322	2322
14	8954	7022	5067	2111	2111
15	9199	7164	5295	1955	1955
16	9501	7387	5558	1876	1876
18	10193	7905	6448	1727	1727

	WUA (ft ² /1000ft)			
	Q (cfs)	Holding Juvenile Fry Spawning		
		Holding	Juvenile	Fry
0.5	29	886	3440	0
0.8	34	1090	3507	0
1.1	41	1343	3655	4
1.5	48	1587	3644	18
2	58	1899	3774	65
2.5	67	2196	3820	136
3	76	2479	3873	228
3.5	84	2731	3934	329
4	91	2929	4025	418
4.4	96	3085	4109	491
5	106	3405	4293	628
5.5	114	3649	4425	723
6	122	3880	4521	826
6.5	129	4133	4600	925
7	137	4372	4654	1030
7.5	145	4616	4727	1129
8	152	4824	4753	1219
8.5	159	5019	4787	1308
9	166	5215	4820	1398
9.5	173	5414	4836	1487
10	180	5597	4852	1565
10.5	186	5718	4857	1613
11	193	5895	4891	1679
11.5	200	6061	4890	1733
12	206	6198	4903	1763
12.7	215	6355	4910	1810
14	230	6570	5067	1854
15	241	6698	5295	1878
16	253	6902	5558	1901
18	276	7373	6448	1907

	WUA (ft ² /1000ft)			
	Q (cfs)	Adult Juvenile Fry Spawning		
		Adult	Juvenile	Fry
0.5	1768	4163		393
0.8	2123	4658		860
1.1	2481	5238		1303
1.5	2832	5779		1686
2	3297	6408		2077
2.5	3746	6860		2379
3	4189	7228		2571
3.5	4609	7607		2708
4	4986	7979		2783
4.4	5276	8263		2820
5	5755	8638		2915
5.5	6112	8921		2963
6	6427	9143		2995
6.5	6738	9345		2969
7	7010	9507		2944
7.5	7271	9660		2914
8	7466	9760		2874
8.5	7649	9860		2838
9	7820	9959		2807
9.5	7965	10047		2779
10	8092	10140		2747
10.5	8161	10190		2687
11	8296	10319		2657
11.5	8438	10414		2627
12	8559	10501		2574
12.7	8744	10636		2508
14	9113	11020		2379
15	9379	11401		2258
16	9696	11885		2134
18	10425	13250		1887

	WUA (ft ² /1000ft)			
	Q (cfs)	Adult Juvenile Fry Spawning		
		Adult	Juvenile	Fry
0.5	3440	3440	3440	60
0.8	3507	3507	3507	175
1.1	3655	3655	3655	397
1.5	3644	3644	3644	714
2	3774	3774	3774	1191
2.5	3820	3820	3820	1612
3	3873	3873	3873	1932
3.5	3934	3934	3934	2097
4	4025	4025	4025	2215
4.4	4109	4109	4109	2314
5	4293	4293	4293	2533
5.5	4425	4425	4425	2660
6	4521	4521	4521	2744
6.5	4600	4600	4600	2798
7	4654	4654	4654	2847
7.5	4727	4727	4727	2875
8	4753	4753	4753	2895
8.5	4787	4787	4787	2925
9	4820	4820	4820	2948
9.5	4836	4836	4836	2960
10	4852	4852	4852	2967
10.5	4857	4857	4857	2972
11	4891	4891	4891	2978
11.5	4890	4890	4890	2983
12	4903	4903	4903	2987
12.7	4910	4910	4910	2991
14	5067	5067	5067	3000
15	5295	5295	5295	2769
16	5558	5558	5558	2311
18	6448	6448	6448	2120

Claim Reach 666 Sycan River, Site 9, Composite WUA

	Q (cfs)	WUA (ft ² /1000ft)			
		Holding	Juvenile	Larvae	Spawning
Klamath Largescale Sucker	0.5	1049	2098	964	205
	0.8	1189	2378	1039	313
	1.1	1364	2727	1135	405
	1.5	1532	3063	1200	524
	2	1739	3472	1309	670
	2.5	1926	3838	1369	813
	3	2099	4174	1413	966
	3.5	2257	4482	1463	1109
	4	2391	4738	1509	1239
	4.4	2493	4932	1533	1344
	5	2681	5296	1580	1519
	5.5	2820	5551	1611	1661
	6	2952	5792	1622	1797
	6.5	3088	6022	1624	1939
	7	3215	6230	1605	2062
	7.5	3350	6454	1600	2197
	8	3466	6623	1583	2308
	8.5	3581	6783	1568	2415
	9	3695	6930	1558	2516
	9.5	3809	7057	1546	2604
	10	3926	7174	1539	2680
	10.5	4010	7242	1535	2744
	11	4132	7369	1547	2817
	11.5	4258	7505	1553	2888
	12	4373	7629	1574	2958
	12.7	4528	7805	1598	3044
	14	4844	8171	1684	3196
	15	5096	8482	1791	3303
	16	5386	8842	1926	3389
	18	6054	9734	2371	3523

	Q (cfs)	WUA (ft ² /1000ft)			
		Holding	Juvenile	Larvae	Spawning
Shorthnose Sucker	0.5	0	245	964	632
	0.8	0	276	1039	820
	1.1	0	314	1135	976
	1.5	0	352	1200	1118
	2	0	402	1309	1288
	2.5	0	449	1369	1445
	3	0	495	1413	1565
	3.5	0	538	1463	1676
	4	0	575	1509	1766
	4.4	0	601	1533	1831
	5	0	648	1580	1914
	5.5	0	684	1611	1950
	6	0	713	1622	1947
	6.5	0	747	1624	1931
	7	0	774	1605	1904
	7.5	0	806	1600	1817
	8	0	830	1583	1709
	8.5	0	853	1568	1611
	9	0	875	1558	1532
	9.5	0	897	1546	1466
	10	0	921	1539	1421
	10.5	0	939	1535	1349
	11	0	965	1547	1324
	11.5	0	992	1553	1303
	12	0	1020	1574	1268
	12.7	0	1053	1598	1237
	14	0	1128	1684	1209
	15	0	1195	1791	1164
	16	0	1273	1926	1123
	18	0	1468	2371	1036

	Q (cfs)	WUA (ft ² /1000ft)			
		Holding	Juvenile	Larvae	Spawning
Lost River Sucker	0.5	0	245	964	163
	0.8	0	276	1039	254
	1.1	0	314	1135	339
	1.5	0	352	1200	436
	2	0	402	1309	524
	2.5	0	449	1369	600
	3	0	495	1413	659
	3.5	0	538	1463	710
	4	0	575	1509	751
	4.4	0	601	1533	785
	5	0	648	1580	842
	5.5	0	684	1611	879
	6	0	713	1622	919
	6.5	0	747	1624	951
	7	0	774	1605	978
	7.5	0	806	1600	1002
	8	0	830	1583	1014
	8.5	0	853	1568	1019
	9	0	875	1558	1024
	9.5	0	897	1546	1025
	10	0	921	1539	1023
	10.5	0	939	1535	1009
	11	0	965	1547	1005
	11.5	0	992	1553	1001
	12	0	1020	1574	992
	12.7	0	1053	1598	983
	14	0	1128	1684	960
	15	0	1195	1791	939
	16	0	1273	1926	920
	18	0	1468	2371	881

	Q (cfs)	WUA (ft ² /1000ft)			
		Adult	Juvenile	Fry	Spawning
Winter Rainbow Trout	0.5	0	11		
	0.8	0	27		
	1.1	0	57		
	1.5	0	95		
	2	4	152		
	2.5	11	208		
	3	22	252		
	3.5	35	284		
	4	49	301		
	4.4	59	315		
	5	78	350		
	5.5	90	367		
	6	103	389		
	6.5	112	404		
	7	123	423		
	7.5	131	441		
	8	138	456		
	8.5	145	470		
	9	151	483		
	9.5	156	495		
	10	161	506		
	10.5	162	509		
	11	166	519		
	11.5	171	529		
	12	173	532		
	12.7	179	541		
	14	186	553		
	15	189	563		
	16	195	577		
	18	203	605		