

8-11-2009

Ex. 280-US-424

Unknown

Follow this and additional works at: <https://digitalcommons.law.uidaho.edu/klamath>

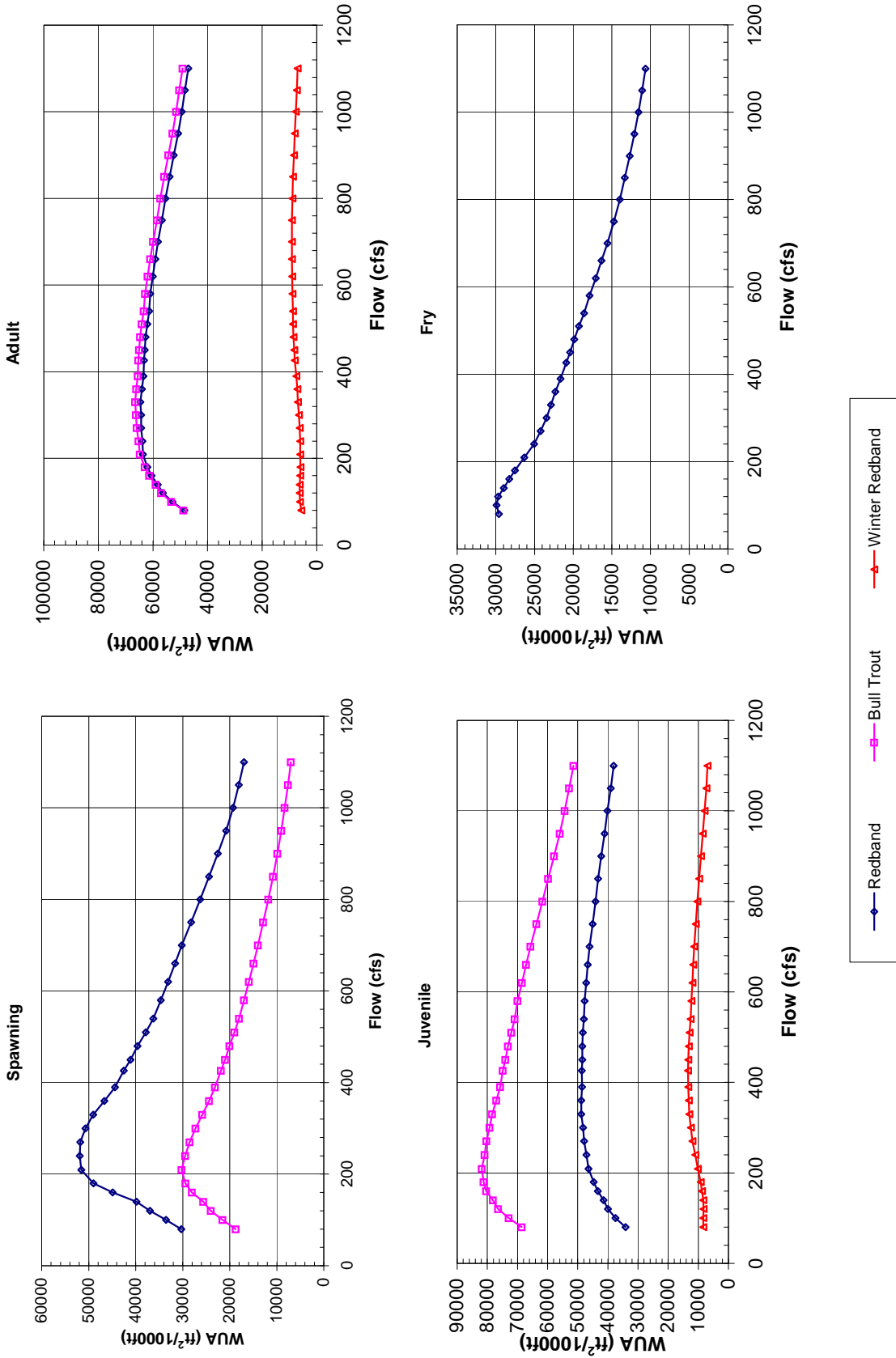
---

### Recommended Citation

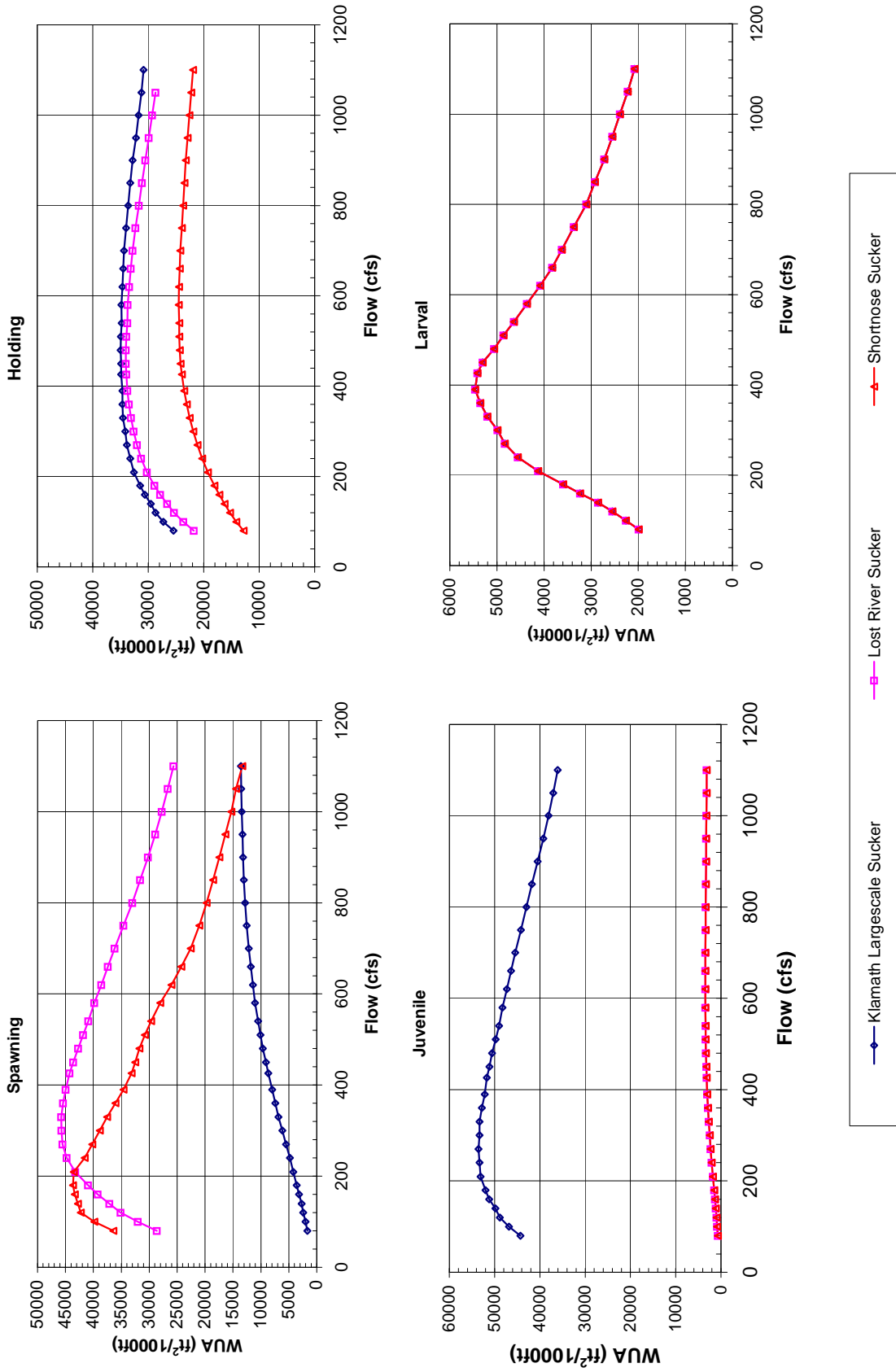
Unknown, "Ex. 280-US-424" (2009). *In re Klamath River (Klamath Tribe)*. 156.  
<https://digitalcommons.law.uidaho.edu/klamath/156>

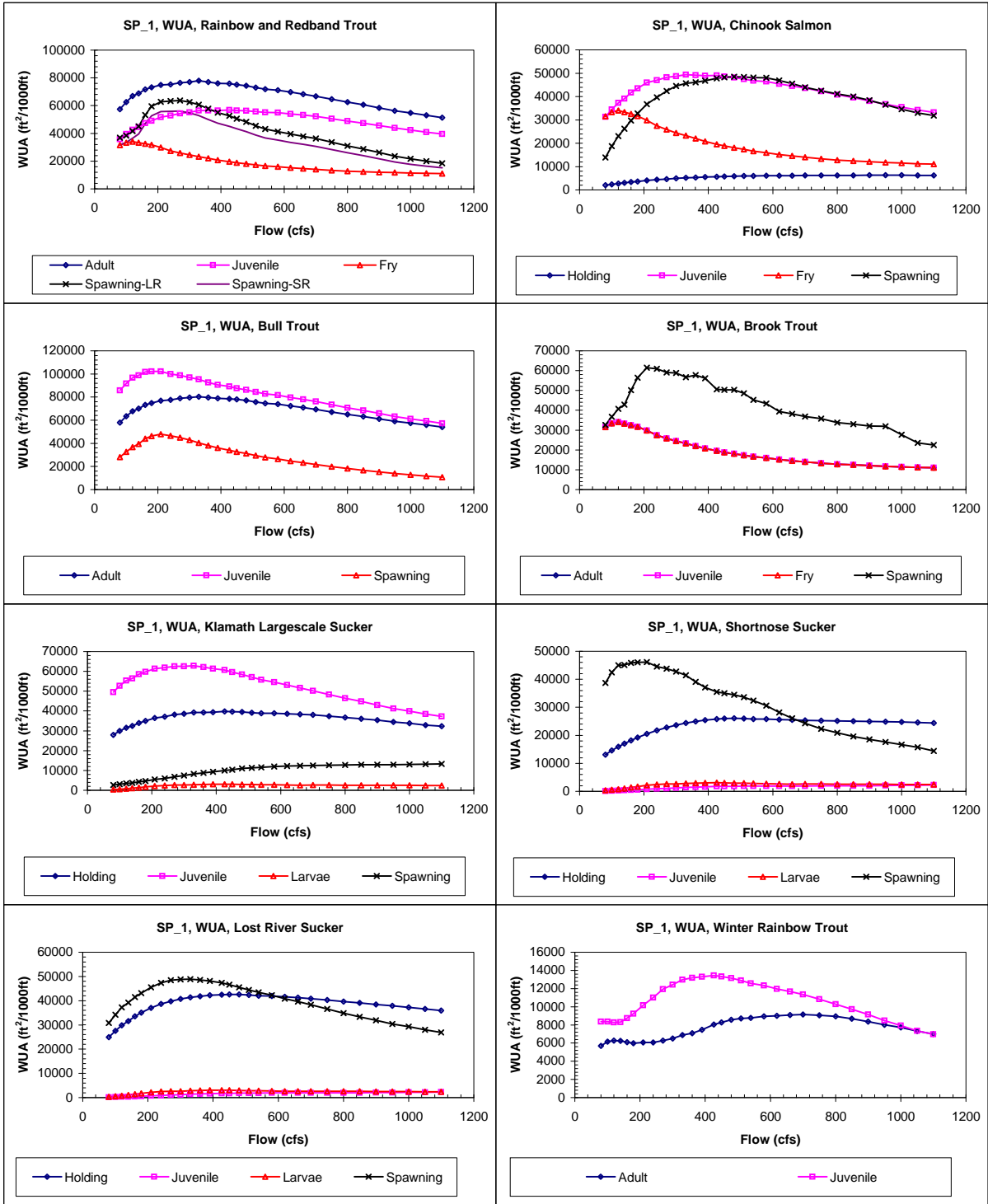
This Expert Report is brought to you for free and open access by the Hedden-Nicely at Digital Commons @ UIdaho Law. It has been accepted for inclusion in In re Klamath River (Klamath Tribe) by an authorized administrator of Digital Commons @ UIdaho Law. For more information, please contact [annablaine@uidaho.edu](mailto:annablaine@uidaho.edu).

**Site 641**  
**Priority Species Habitat - Flow Curves**



Site 641  
Priority Species Habitat - Flow Curves





**Sprague River, 641, Composite WUA**

	WUA (ft <sup>2</sup> /1000ft)				
	Q	Adult	Juvenile	Fry	Spawning - Sp - Small
	(cfs)			Large River	River
80	48483	34092	29607	30283	24820
100	52824	37465	29924	33531	27512
120	56394	39947	29717	36968	30330
140	58294	41449	28967	39817	32650
160	60547	43329	28267	44907	37081
180	62003	44684	27545	49003	40560
209.2	63615	46393	26312	51546	42708
240	63828	47116	25061	51927	42929
270	64316	47918	24226	51775	42746
300	64365	48251	23439	50673	41725
330	64626	48838	22862	49014	40284
360	64080	48819	22309	46644	38229
390	63428	48543	21644	44404	36318
426	63261	48674	20908	42533	34718
450	62964	48509	20407	41120	33541
480	62691	48496	19846	39636	32204
510	62060	48323	19244	37856	30638
540	61427	47955	18602	36230	29194
580	60975	47750	17891	34629	27764
620	60076	47201	17097	33094	26438
660	59135	46661	16332	31645	25163
700	58119	46036	15587	30202	23913
750	56710	45077	14738	28191	22166
800	55371	44130	13960	26289	20501
850	53905	43219	13336	24431	18887
900	52351	42201	12683	22533	17229
950	50773	41064	12088	20752	15706
1000	49460	40105	11562	19279	14504
1050	48309	39029	11074	18083	13544
1100	47070	38082	10652	16957	12609

	WUA (ft <sup>2</sup> /1000ft)				
	Q	Holding	Juvenile	Fry	Spawning
	(cfs)				
80	1887	30879	29607	10929	
100	2161	33466	29924	14997	
120	2422	35616	29717	18759	
139.6	2644	36973	28967	21635	
160	2884	38633	28267	24670	
180	3098	39853	27545	27447	
209.2	3397	41397	26312	31013	
240	3667	41938	25061	33856	
270	3914	42498	24226	36300	
300	4126	42638	23439	38381	
330	4323	42942	22862	39841	
360	4483	42799	22309	40658	
390	4622	42475	21644	41474	
426.2	4779	42473	20908	42301	
450	4862	42242	20407	42635	
480	4956	42132	19846	42537	
510	5025	41863	19244	42127	
540	5066	41485	18602	41470	
580	5155	41260	17891	40641	
620	5188	40685	17097	39435	
660	5218	40152	16332	38362	
700	5247	39602	15587	37216	
750	5265	38751	14738	36118	
800	5277	37904	13960	35168	
850	5305	37101	13336	34233	
900	5319	36251	12683	33083	
950	5300	35311	12088	31820	
1000	5287	34514	11562	30582	
1050	5246	33614	11074	29374	
1100	5218	32841	10652	28379	

	WUA (ft <sup>2</sup> /1000ft)			
	Q	Adult	Juvenile	Spawning
	(cfs)			
80	48837	68573	18750	
100	53288	72889	21547	
120	56978	76379	24013	
139.6	59006	78128	25606	
160	61394	80390	28069	
180	62990	81257	29404	
209.2	64834	81857	30256	
240	65318	80922	29464	
270	65971	80258	28544	
300	66177	79224	27273	
330	66539	78423	25849	
360	66109	77049	24420	
390	65557	75756	23143	
426.2	65364	74832	21853	
450	65045	73999	21001	
480	64744	73142	20038	
510	64100	72009	19007	
540	63417	70925	18001	
580	62897	69939	16984	
620	61934	68506	15901	
660	60967	67095	14948	
700	59929	65655	14021	
750	58561	63656	12892	
800	57265	61694	11807	
850	55867	59809	10783	
900	54381	57862	9864	
950	52854	55962	9043	
1000	51553	54306	8322	
1050	50384	52845	7619	
1100	49153	51391	6998	

	WUA (ft <sup>2</sup> /1000ft)				
	Q	Adult	Juvenile	Fry	Spawning
	(cfs)				
80	31516	31516	31516	32573	
100	33351	33351	33351	36714	
120	34058	34058	34058	40669	
139.6	33320	33320	33320	42888	
160	32525	32525	32525	50105	
180	31678	31678	31678	56405	
209.2	29846	29846	29846	61429	
240	27433	27433	27433	60925	
270	25883	25883	25883	59027	
300	24457	24457	24457	58815	
330	23266	23266	23266	56752	
360	22011	22011	22011	57732	
390	20754	20754	20754	56162	
426.2	19574	19574	19574	50548	
450	18818	18818	18818	50265	
480	18101	18101	18101	50347	
510	17352	17352	17352	48579	
540	16624	16624	16624	45197	
580	15932	15932	15932	43380	
620	15170	15170	15170	39341	
660	14552	14552	14552	38177	
700	13974	13974	13974	36839	
750	13306	13306	13306	35852	
800	12776	12776	12776	33799	
850	12448	12448	12448	33049	
900	12063	12063	12063	32122	
950	11703	11703	11703	31963	
1000	11476	11476	11476	27704	
1050	11191	11191	11191	23504	
1100	11029	11029	11029	22475	

**Sprague River, 641, Composite WUA**

	WUA (ft <sup>2</sup> /1000ft)				
	Q (cfs)	Holding	Juvenile	Larvae	Spawning
Klamath Largesac Sucker	80	25465	44278	1991	1683
	100	27270	46842	2262	2026
	120	28670	48857	2549	2405
	139.6	29511	49806	2855	2685
	160	30632	51177	3237	3158
	180	31463	51995	3594	3571
	209.2	32602	53086	4128	4196
	240	33220	53340	4554	4811
	270	33844	53553	4836	5508
	300	34111	53316	4987	6152
	330	34547	53338	5206	6851
	360	34634	52815	5353	7420
	390	34632	52189	5461	7957
	426.2	34904	51708	5414	8674
	450	34876	51129	5302	9092
	480	34997	50540	5059	9662
	510	34938	49782	4859	10096
	540	34786	49003	4639	10490
	580	34856	48257	4365	11040
	620	34670	47280	4080	11445
	660	34527	46365	3826	11803
	700	34365	45432	3620	12172
	750	34012	44186	3370	12543
	800	33617	42991	3103	12848
	850	33262	41764	2922	13060
	900	32810	40497	2719	13217
	950	32210	39207	2547	13295
	1000	31741	38109	2387	13438
	1050	31237	37031	2223	13516
	1100	30865	36090	2082	13593

	WUA (ft <sup>2</sup> /1000ft)				
	Q (cfs)	Holding	Juvenile	Larvae	Spawning
Shorthose Sucker	80	12803	687	1991	36448
	100	14117	836	2262	39815
	120	15274	992	2549	42265
	139.6	16222	1151	2855	42777
	160	17200	1335	3237	43337
	180	18073	1512	3594	43634
	209.2	19247	1784	4128	43535
	240	20268	2043	4554	41557
	270	21136	2274	4836	40187
	300	21865	2483	4987	38832
	330	22527	2706	5206	37550
	360	23070	2883	5353	36046
	390	23500	3026	5461	34613
	426.2	23926	3184	5414	33172
	450	24166	3248	5302	32526
	480	24336	3337	5059	31747
	510	24426	3396	4859	30802
	540	24392	3417	4639	29661
	580	24523	3468	4365	28028
	620	24450	3472	4080	26040
	660	24320	3458	3826	24238
	700	24208	3445	3620	22575
	750	23960	3403	3370	21051
	800	23704	3370	3103	19734
	850	23459	3342	2922	18546
	900	23225	3304	2719	17451
	950	22907	3257	2547	16379
	1000	22590	3229	2387	15307
	1050	22266	3187	2223	14450
	1100	21919	3158	2082	13320

	WUA (ft <sup>2</sup> /1000ft)				
	Q (cfs)	Holding	Juvenile	Larvae	Spawning
Lost River Sucker	80	21767	687	1991	28649
	100	23680	836	2262	32047
	120	25339	992	2549	35124
	139.6	26583	1151	2855	37137
	160	27832	1335	3237	39235
	180	28887	1512	3594	40957
	209.2	30215	1784	4128	43251
	240	31274	2043	4554	44781
	270	32024	2274	4836	45510
	300	32617	2483	4987	45716
	330	33090	2706	5206	45752
	360	33458	2883	5353	45434
	390	33746	3026	5461	44982
	426.2	33939	3184	5414	44267
	450	34049	3248	5302	43605
	480	34035	3337	5059	42741
	510	33954	3396	4859	41824
	540	33756	3417	4639	40916
	580	33707	3468	4365	39816
	620	33441	3472	4080	38576
	660	33134	3458	3826	37389
	700	32796	3445	3620	36186
	750	32283	3403	3370	34595
	800	31683	3370	3103	33017
	850	31104	3342	2922	31620
	900	30538	3304	2719	30228
	950	29909	3257	2547	28927
	1000	29283	3229	2387	27774
	1050	28689	3187	2223	26660
	1100	28079	3158	2082	25634

	WUA (ft <sup>2</sup> /1000ft)				
	Q (cfs)	Adult	Juvenile	Fry	Spawning
Winter Rainbow Trout	80	5684	8353		
	100	6159	8372		
	120	6282	8276		
	139.6	6238	8299		
	160	6105	8732		
	180	5969	9230		
	209.2	6082	10172		
	240	6069	10992		
	270	6268	11921		
	300	6513	12441		
	330	6881	12982		
	360	7086	13172		
	390	7451	13297		
	426.2	8047	13444		
	450	8283	13322		
	480	8558	13152		
	510	8697	12885		
	540	8769	12575		
	580	8952	12333		
	620	9011	11966		
	660	9089	11672		
	700	9149	11344		
	750	9066	10826		
	800	8947	10275		
	850	8688	9721		
	900	8367	9141		
	950	8021	8481		
	1000	7720	7934		
	1050	7306	7335		
	1100	6991	6975		