

12-4-2009

Ex. 280-US-444

Unknown

Follow this and additional works at: <https://digitalcommons.law.uidaho.edu/klamath>

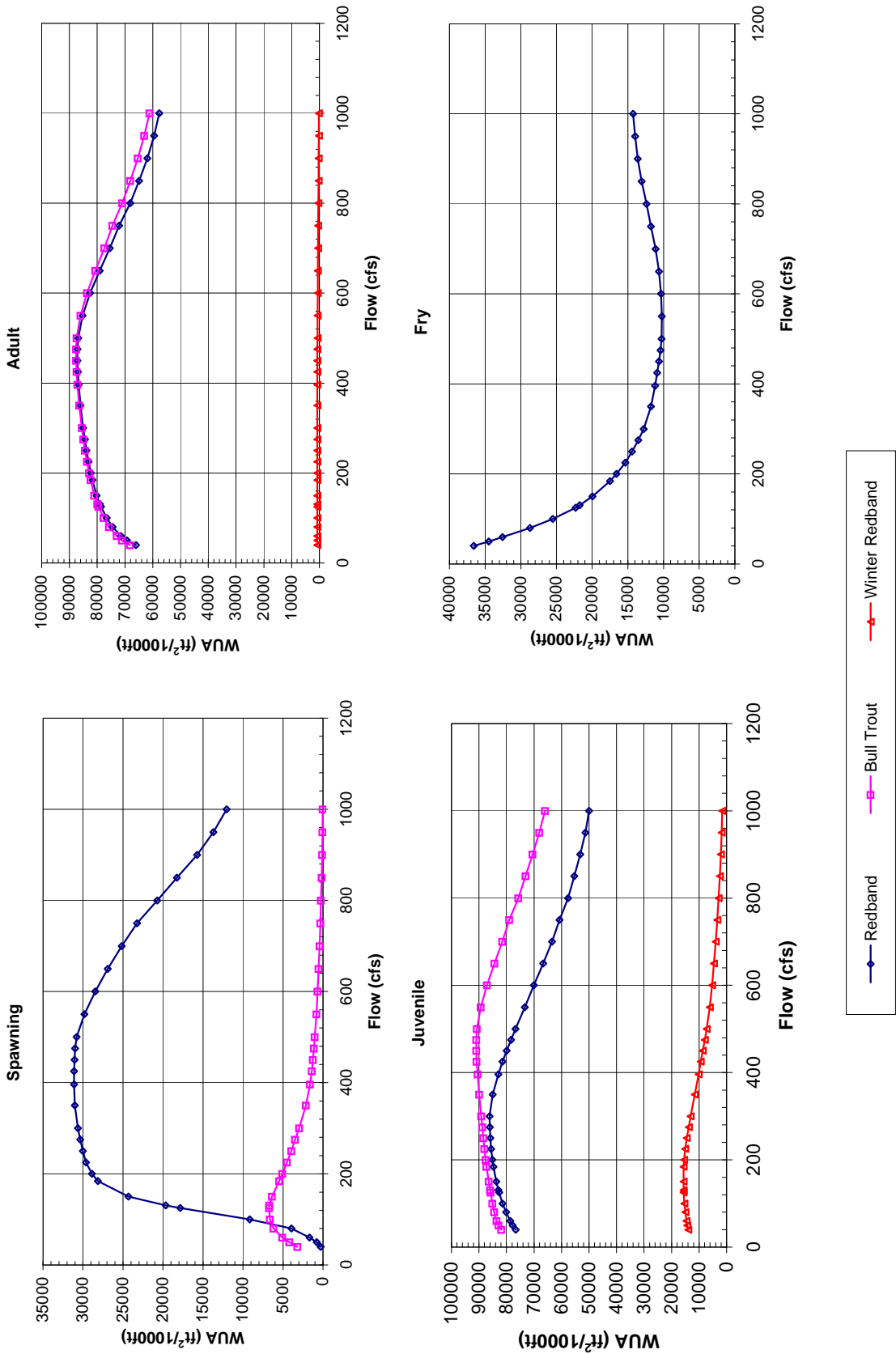
---

### Recommended Citation

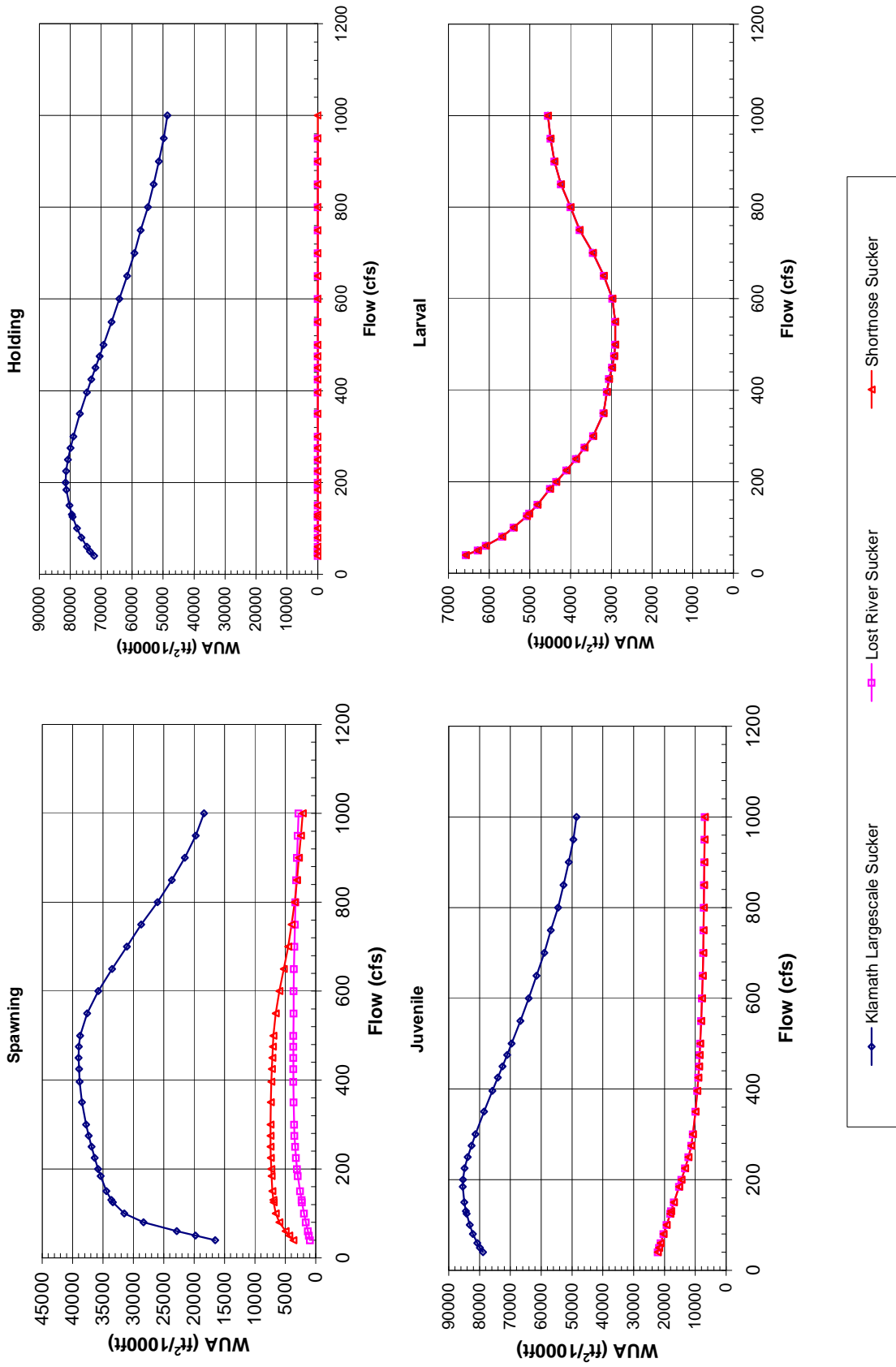
Unknown, "Ex. 280-US-444" (2009). *In re Klamath River (Klamath Tribe)*. 176.  
<https://digitalcommons.law.uidaho.edu/klamath/176>

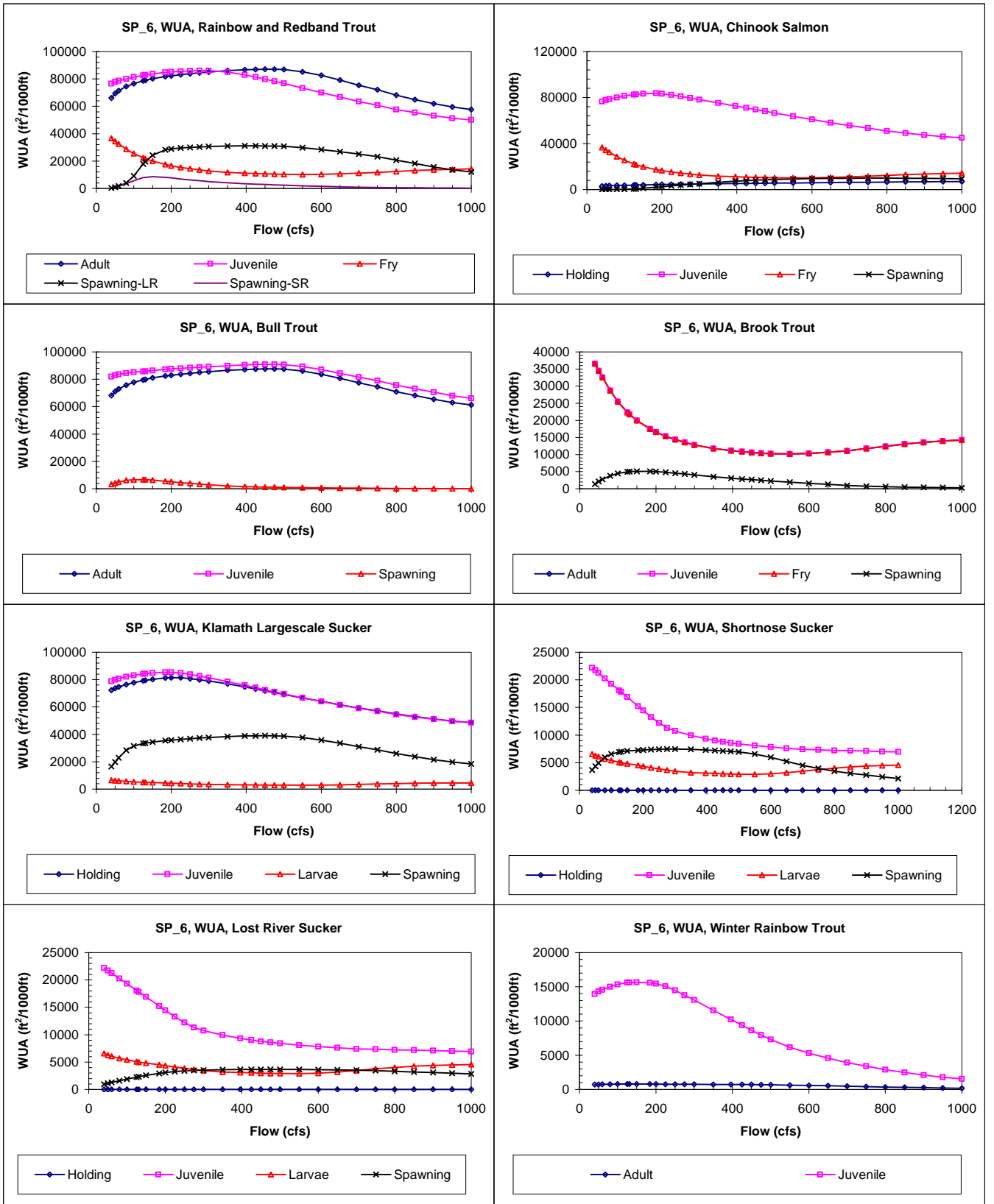
This Expert Report is brought to you for free and open access by the Hedden-Nicely at Digital Commons @ UIdaho Law. It has been accepted for inclusion in In re Klamath River (Klamath Tribe) by an authorized administrator of Digital Commons @ UIdaho Law. For more information, please contact [annablaine@uidaho.edu](mailto:annablaine@uidaho.edu).

**Site 646**  
**Priority Species Habitat - Flow Curves**



Site 646  
Priority Species Habitat - Flow Curves





**Claim Reach 646 Sprague River, Site 6, Composite WUA**

	WUA (ft <sup>2</sup> /1000ft)				
	Q	Spawning - Spawning -			
	(cfs)	Adult	Juvenile	Fry	Large River Small River
40	66023	76612	36586	304	304
50	69286	77748	34477	783	781
60	71449	78581	32560	1669	1609
80	74482	80110	28699	3964	3516
100	76628	81442	25500	9159	5705
125	78640	82662	22309	17826	7849
130.5	79038	82925	21748	19661	8157
150	80229	83732	19962	24307	8550
184.3	81699	84771	17489	28150	8081
200	82278	85115	16583	28876	7700
225	83093	85581	15364	29620	6969
250	83820	85863	14405	30023	6255
275	84429	86032	13550	30349	5662
300	85065	86117	12786	30631	5045
350	86052	85061	11770	31010	4096
396.2	86664	82941	11180	31118	3435
425	86942	81414	10907	31099	3084
450	87099	79909	10624	31066	2845
475	87127	78345	10425	30982	2587
500	86889	76750	10280	30783	2329
550	85265	73323	10219	29814	1867
600	82557	70022	10339	28468	1475
650	79118	66703	10645	26906	1150
700	75466	63503	11114	25160	906
750	72128	60741	11758	23257	708
800	68110	57662	12363	20733	572
850	64914	55356	13060	18252	455
900	61981	53161	13596	15744	367
950	59497	51304	13963	13681	290
1000	57637	50017	14256	12046	226

	WUA (ft <sup>2</sup> /1000ft)			
	Q	Holding Juvenile Fry Spawning		
	(cfs)			
40	3147	76612	36586	227
50	3281	77748	34477	875
60	3391	78581	32560	1204
80	3598	80100	28699	1542
100	3780	81403	25500	1890
125	3970	82494	22309	2227
130.5	4010	82717	21748	2608
150	4137	83360	19962	3024
184.3	4329	83704	17489	3358
200	4407	83314	16583	3650
225	4537	82392	15364	3839
250	4657	81121	14405	3955
275	4763	79648	13550	4032
300	4883	78284	12786	4079
350	5097	75446	11770	4103
396.2	5273	72751	11180	4115
425	5389	71129	10907	4128
450	5476	69602	10624	4138
475	5563	68113	10425	4148
500	5650	66625	10280	4156
550	5812	63623	10219	4167
600	5977	60929	10339	4175
650	6124	58232	10645	4147
700	6260	55658	11114	4061
750	6408	53491	11758	3835
800	6527	51028	12363	3423
850	6665	49220	13060	2992
900	6784	47506	13596	2575
950	6872	46040	13963	2200
1000	6947	45034	14256	1943

	WUA (ft <sup>2</sup> /1000ft)			
	Q	Adult Juvenile Fry Spawning		
	(cfs)			
40	68161	81933		3190
50	71048	82902		4212
60	72991	83608		5069
80	75756	84453		6198
100	77724	85125		6625
125	79577	85797		6749
130.5	79947	85971		6713
150	81046	86479		6368
184.3	82404	87258		5459
200	82937	87539		5093
225	83695	88016		4485
250	84377	88446		3936
275	84950	88782		3485
300	85559	89162		2987
350	86506	89927		2149
396.2	87108	90524		1616
425	87391	90829		1395
450	87556	90927		1265
475	87609	90960		1145
500	87427	90764		1024
550	86035	89390		823
600	83677	87131		670
650	80663	84369		540
700	77444	81552		432
750	74519	79034		330
800	70956	75745		251
850	68116	73115		167
900	65434	70494		102
950	63059	68041		55

	WUA (ft <sup>2</sup> /1000ft)			
	Q	Adult Juvenile Fry Spawning		
	(cfs)			
40	36586	36586	36586	3765
50	34477	34477	34477	8168
60	32560	32560	32560	9439
80	28699	28699	28699	10445
100	25500	25500	25500	11157
125	22309	22309	22309	11648
130.5	21748	21748	21748	11925
150	19962	19962	19962	12187
184.3	17489	17489	17489	12040
200	16583	16583	16583	11706
225	15364	15364	15364	11271
250	14405	14405	14405	10890
275	13550	13550	13550	10434
300	12786	12786	12786	10003
350	11770	11770	11770	9533
396.2	11180	11180	11180	8913
425	10907	10907	10907	8330
450	10624	10624	10624	7609
475	10425	10425	10425	6868
500	10280	10280	10280	6101
550	10219	10219	10219	4776
600	10339	10339	10339	4141
650	10645	10645	10645	2783
700	11114	11114	11114	1867
750	11758	11758	11758	1291
800	12363	12363	12363	925
850	13060	13060	13060	740
900	13596	13596	13596	622
950	13963	13963	13963	435

1000 | 61193 66023 | 32

1000 | 14256 14256 14256 | 363

Claim Reach 646 Sprague River, Site 6, Composite WUA

	WUA (ft <sup>2</sup> /1000ft)			
	Q (cfs)	Holding	Juvenile	Larvae
40	72282	78849	6571	16526
50	73641	79857	6282	19797
60	74653	80700	6081	22870
80	76408	82123	5679	28348
100	77853	83188	5401	31514
125	79214	84197	5070	33355
130.5	79474	84398	5012	33641
150	80254	84923	4813	34429
184.3	81277	85410	4507	35395
200	81487	85388	4353	35801
225	81372	84871	4103	36366
250	80785	83863	3870	36865
275	79890	82576	3655	37331
300	79029	81356	3445	37764
350	76885	78570	3190	38464
396.2	74624	75821	3110	38832
425	73199	74114	3058	38943
450	71851	72543	2977	39005
475	70545	71041	2931	38976
500	69257	69594	2905	38755
550	66630	66726	2903	37613
600	64128	64080	2975	35755
650	61662	61501	3184	33483
700	59270	58980	3455	31061
750	57240	56905	3775	28710
800	54906	54491	4002	26021
850	53095	52719	4240	23673
900	51368	51044	4396	21537
950	49815	49577	4495	19762
1000	48604	48511	4554	18358

	WUA (ft <sup>2</sup> /1000ft)			
	Q (cfs)	Holding	Juvenile	Larvae
40	0	22184	6571	3673
50	0	21742	6282	4351
60	0	21242	6081	4959
80	0	20273	5679	5993
100	0	19302	5401	6573
125	0	18086	5070	6920
130.5	0	17835	5012	6975
150	0	16909	4813	7118
184.3	0	15245	4507	7262
200	0	14473	4353	7310
225	0	13285	4103	7373
250	0	12205	3870	7423
275	0	11323	3655	7452
300	0	10767	3445	7452
350	0	9946	3190	7403
396.2	0	9332	3110	7287
425	0	9018	3058	7214
450	0	8779	2977	7140
475	0	8592	2931	7060
500	0	8425	2905	6964
550	0	8108	2903	6583
600	0	7835	2975	5982
650	0	7598	3184	5235
700	0	7409	3455	4516
750	0	7344	3775	3963
800	0	7218	4002	3474
850	0	7169	4240	3072
900	0	7106	4396	2758
950	0	7014	4495	2447
1000	0	6942	4554	2131

	WUA (ft <sup>2</sup> /1000ft)			
	Q (cfs)	Holding	Juvenile	Larvae
40	0	22184	6571	926
50	0	21742	6282	1107
60	0	21242	6081	1283
80	0	20273	5679	1609
100	0	19302	5401	1907
125	0	18086	5070	2254
130.5	0	17835	5012	2323
150	0	16909	4813	2560
184.3	0	15245	4507	2941
200	0	14473	4353	3093
225	0	13285	4103	3269
250	0	12205	3870	3394
275	0	11323	3655	3483
300	0	10767	3445	3539
350	0	9946	3190	3615
396.2	0	9332	3110	3663
425	0	9018	3058	3667
450	0	8779	2977	3667
475	0	8592	2931	3664
500	0	8425	2905	3659
550	0	8108	2903	3648
600	0	7835	2975	3628
650	0	7598	3184	3585
700	0	7409	3455	3514
750	0	7344	3775	3426
800	0	7218	4002	3312
850	0	7169	4240	3203
900	0	7106	4396	3087
950	0	7014	4495	2965

	WUA (ft <sup>2</sup> /1000ft)			
	Q (cfs)	Adult	Juvenile	Fry
40	715	13945		
50	732	14314		
60	748	14570		
80	768	15013		
100	778	15361		
125	790	15619		
130.5	791	15643		
150	793	15670		
184.3	784	15589		
200	779	15472		
225	772	15065		
250	765	14481		
275	759	13780		
300	752	13067		
350	738	11557		
396.2	725	10207		
425	725	9386		
450	713	8652		
475	701	7945		
500	682	7283		
550	635	6159		
600	592	5299		
650	534	4578		
700	475	3937		
750	420	3393		
800	359	2883		
850	308	2482		
900	263	2107		
950	217	1793		

1000 | 0 6942 4554 2838

1000 | 177 1559