

12-4-2009

Ex. 280-US-447

Unknown

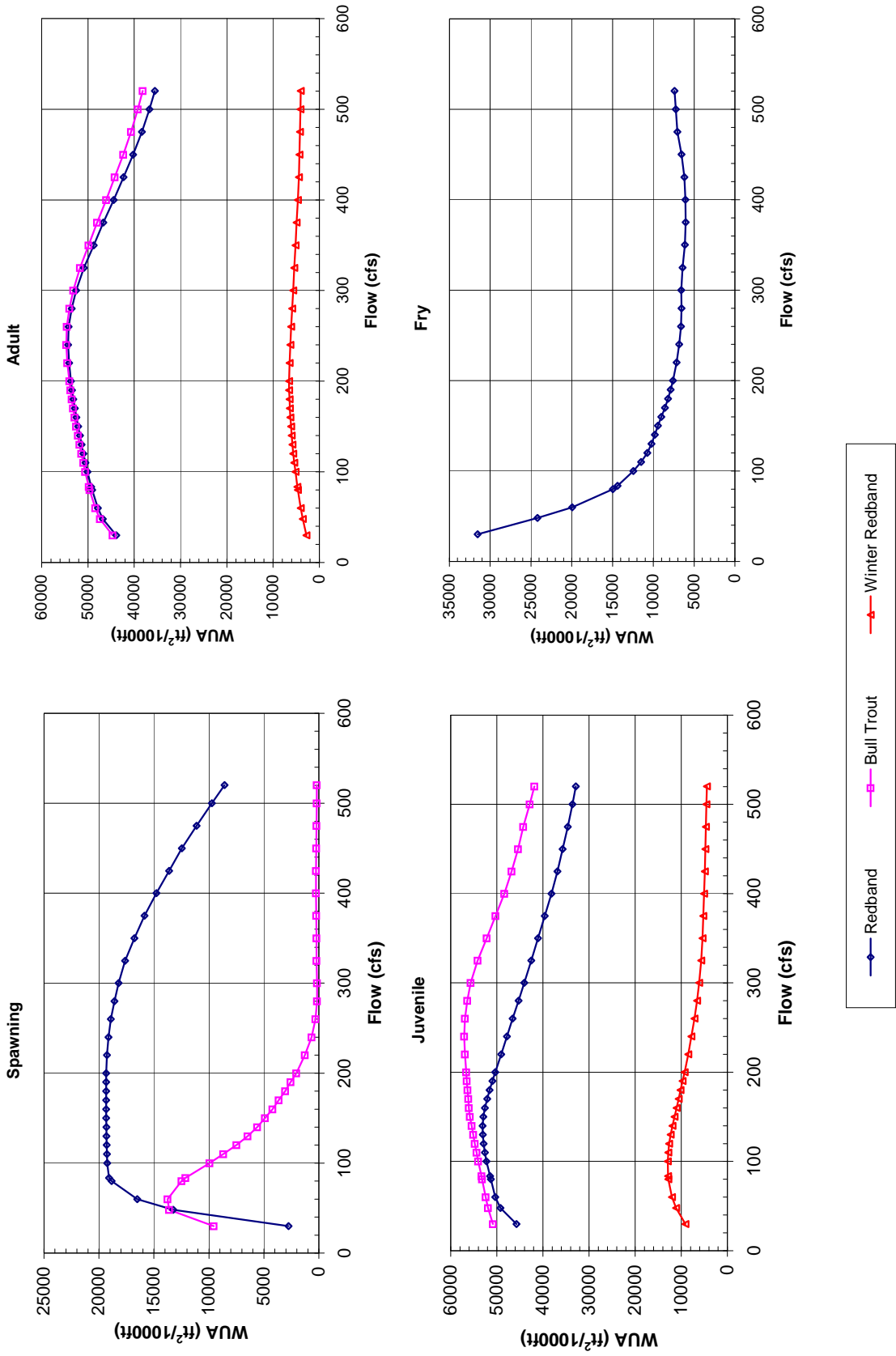
Follow this and additional works at: <https://digitalcommons.law.uidaho.edu/klamath>

Recommended Citation

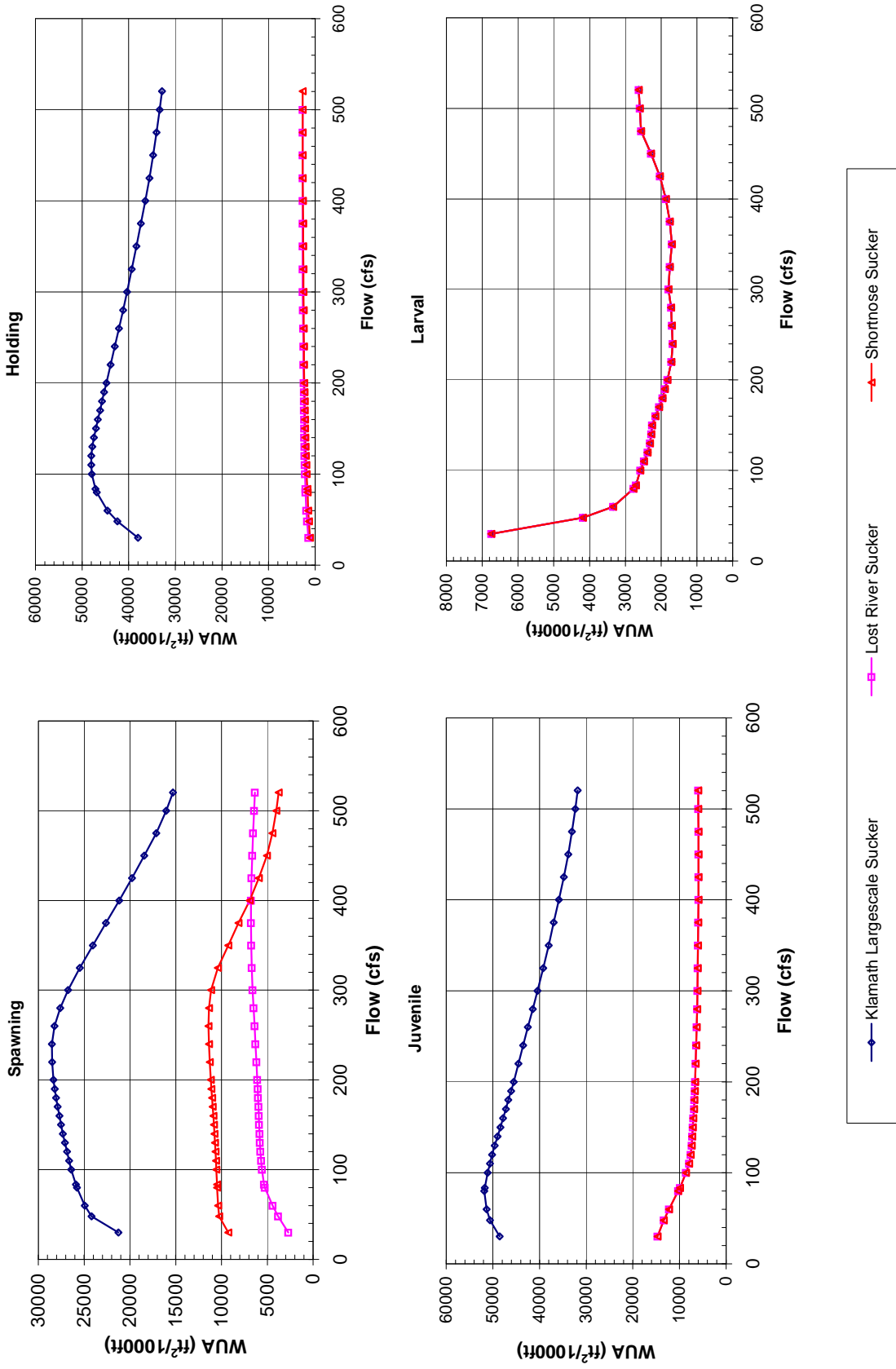
Unknown, "Ex. 280-US-447" (2009). *In re Klamath River (Klamath Tribe)*. 179.
<https://digitalcommons.law.uidaho.edu/klamath/179>

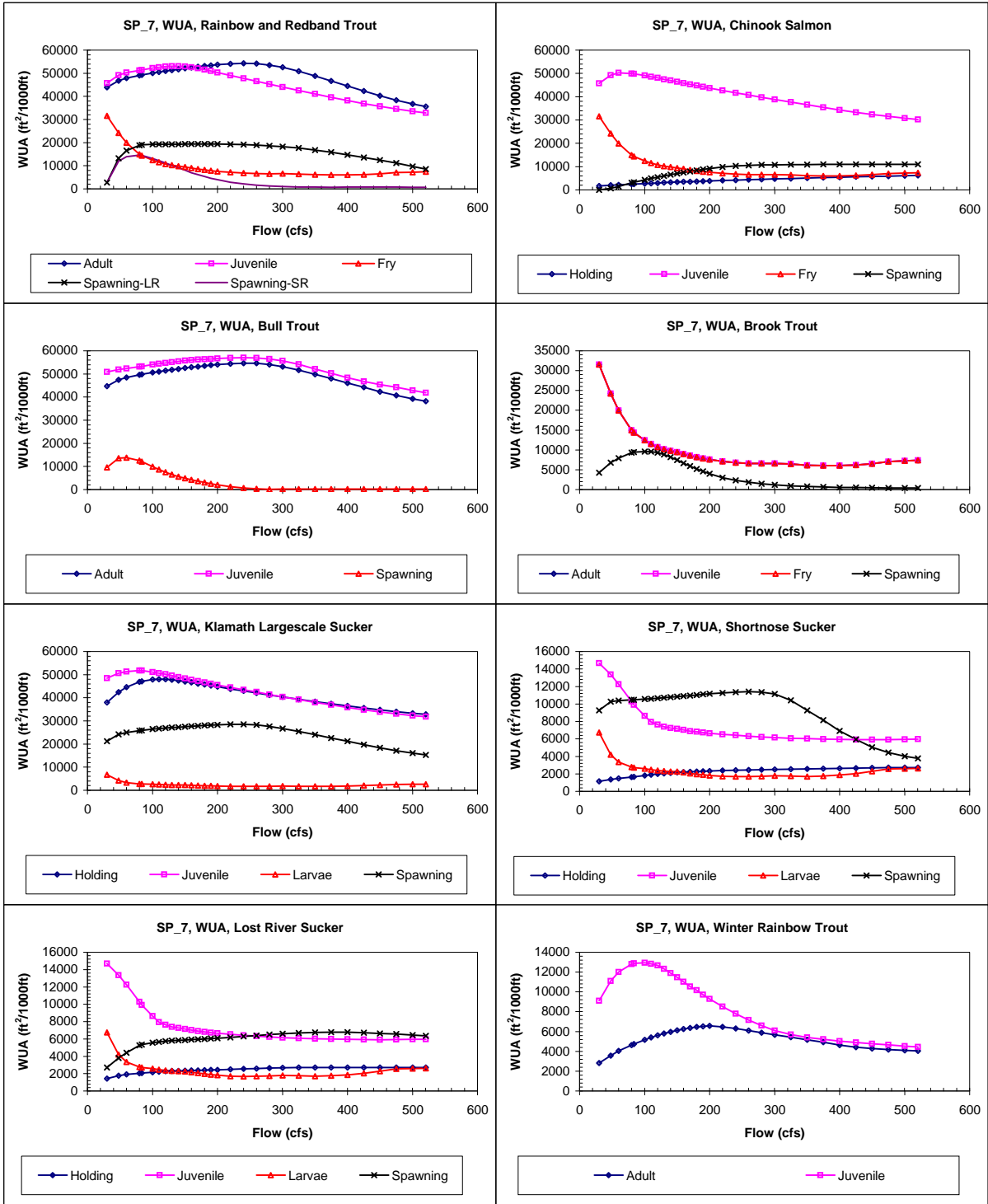
This Expert Report is brought to you for free and open access by the Hedden-Nicely at Digital Commons @ UIdaho Law. It has been accepted for inclusion in In re Klamath River (Klamath Tribe) by an authorized administrator of Digital Commons @ UIdaho Law. For more information, please contact annablaine@uidaho.edu.

Site 647
Priority Species Habitat - Flow Curves



Site 647
Priority Species Habitat - Flow Curves





Claim Reach 647 Sprague River, Site 7, Composite WUA

	WUA (ft ² /1000ft)				
	Q	Spawning - Spawning -			
	(cfs)	Adult	Juvenile	Fry	Large River Small River
30	43900	45722	31540	2753	2736
48	46781	49206	24195	13249	12005
60	47856	50310	19955	16508	13970
80	49100	51266	14956	18846	14595
83.6	49290	51438	14399	19090	14524
100	50112	52227	12450	19256	13071
110	50527	52567	11507	19283	12162
120	50966	52889	10742	19302	11174
130	51354	53048	10213	19317	10176
140	51728	53092	9809	19329	9127
150	52123	52934	9445	19335	8043
160	52499	52595	9010	19340	7011
170	52832	52090	8586	19345	6170
180	53167	51597	8195	19350	5310
190	53437	50957	7866	19355	4606
200	53677	50325	7579	19340	3951
220	54083	49039	7134	19272	2888
240	54300	47804	6816	19132	2147
260	54160	46551	6591	18910	1600
280	53514	45272	6556	18581	1203
300	52546	44033	6588	18220	1003
325	50864	42554	6427	17632	842
350	48777	41071	6126	16768	762
375	46664	39590	6046	15853	738
400	44453	38167	6053	14764	764
425	42325	36830	6181	13622	811
450	40250	35724	6553	12467	776
475	38342	34586	7046	11128	748
500	36707	33569	7226	9723	732
520.3	35550	32876	7397	8583	724

	WUA (ft ² /1000ft)			
	Q	Spawning		
	(cfs)	Holding	Juvenile	Fry
30	1681	45722	31540	3
48	2009	49206	24195	647
60	2197	50231	19955	1514
80	2452	49950	14956	3061
83.6	2498	49758	14399	3312
100	2728	49100	12450	4350
110	2861	48566	11507	4930
120	2994	48075	10742	5463
130	3115	47480	10213	6001
140	3229	46926	9809	6539
150	3344	46387	9445	7017
160	3456	45857	9010	7492
170	3554	45276	8586	7972
180	3663	44804	8195	8373
190	3758	44221	7866	8792
200	3854	43674	7579	9175
220	4039	42645	7134	9838
240	4220	41692	6816	10328
260	4391	40733	6591	10578
280	4555	39756	6556	10720
300	4714	38822	6588	10797
325	4910	37694	6427	10840
350	5092	36545	6126	10886
375	5274	35388	6046	10926
400	5440	34283	6053	10960
425	5609	33245	6181	10993
450	5766	32420	6553	11021
475	5920	31553	7046	11029
500	6063	30791	7226	11033
520.3	6172	30274	7397	11008

	WUA (ft ² /1000ft)			
	Q	Spawning		
	(cfs)	Adult	Juvenile	Fry
30	44669	50821		9559
48	47423	51925		13609
60	48432	52410		13771
80	49621	53177		12491
83.6	49802	53294		12135
100	50596	54027		9944
110	51000	54389		8697
120	51427	54754		7490
130	51801	55104		6482
140	52160	55472		5620
150	52536	55832		4900
160	52894	56057		4224
170	53211	56186		3642
180	53533	56346		3056
190	53795	56501		2559
200	54033	56641		2058
220	54446	56898		1265
240	54677	57053		655
260	54590	56898		296
280	54035	56417		155
300	53194	55698		177
325	51717	54156		201
350	49878	52168		223
375	48025	50273		244
400	46083	48387		254
425	44203	46772		251
450	42368	45416		233
475	40686	44246		213
500	39225	42883		195

	WUA (ft ² /1000ft)			
	Q	Spawning		
	(cfs)	Adult	Juvenile	Fry
30	31540	31540	31540	4245
48	24195	24195	24195	6813
60	19955	19955	19955	7933
80	14956	14956	14956	9284
83.6	14399	14399	14399	9430
100	12450	12450	12450	9610
110	11507	11507	11507	9579
120	10742	10742	10742	9301
130	10213	10213	10213	8867
140	9809	9809	9809	8216
150	9445	9445	9445	7431
160	9010	9010	9010	6624
170	8586	8586	8586	5942
180	8195	8195	8195	5193
190	7866	7866	7866	4573
200	7579	7579	7579	3986
220	7134	7134	7134	3004
240	6816	6816	6816	2331
260	6591	6591	6591	1838
280	6556	6556	6556	1460
300	6588	6588	6588	1201
325	6427	6427	6427	945
350	6126	6126	6126	770
375	6046	6046	6046	642
400	6053	6053	6053	555
425	6181	6181	6181	501
450	6553	6553	6553	445
475	7046	7046	7046	418
500	7226	7226	7226	407

520.3	38176	41868	181
-------	-------	-------	-----

520.3	7397	7397	7397	411
-------	------	------	------	-----

Claim Reach 647 Sprague River, Site 7, Composite WUA

	Q (cfs)	WUA (ft ² /1000ft)			
		Holding	Juvenile	Larvae	Spawning
Klamath Largescale Sucker	30	38001	48515	6743	21246
	48	42422	50632	4187	24176
	60	44545	51310	3337	24937
	80	46855	51824	2772	25778
	83.6	47106	51743	2707	25911
	100	47892	51117	2584	26410
	110	48003	50595	2478	26651
	120	48043	50162	2378	26873
	130	47799	49581	2315	27099
	140	47442	48970	2279	27316
	150	47030	48383	2250	27520
	160	46600	47812	2160	27696
	170	46113	47184	2055	27878
	180	45737	46674	1964	28050
	190	45252	46078	1893	28211
	200	44774	45527	1822	28339
	220	43859	44529	1712	28484
	240	42969	43483	1676	28531
	260	42096	42494	1696	28244
	280	41220	41437	1724	27601
	300	40367	40428	1791	26740
	325	39346	39194	1757	25463
	350	38343	38005	1701	24055
	375	37409	36940	1756	22613
	400	36448	35853	1866	21176
	425	35548	34790	2038	19785
	450	34773	33844	2284	18420
	475	34026	33027	2559	17114
500	33333	32323	2594	16036	
520.3	32835	31831	2624	15291	

	Q (cfs)	WUA (ft ² /1000ft)			
		Holding	Juvenile	Larvae	Spawning
Shortnose Sucker	30	1135	14680	6743	9256
	48	1367	13360	4187	10268
	60	1485	12272	3337	10371
	80	1641	10280	2772	10473
	83.6	1675	9914	2707	10489
	100	1821	8630	2584	10560
	110	1909	7946	2478	10608
	120	1988	7631	2378	10658
	130	2052	7389	2315	10711
	140	2111	7256	2279	10767
	150	2164	7143	2250	10827
	160	2197	7032	2160	10889
	170	2227	6893	2055	10954
	180	2262	6812	1964	11025
	190	2293	6731	1893	11097
	200	2325	6650	1822	11162
	220	2382	6531	1712	11270
	240	2409	6419	1676	11358
	260	2437	6318	1696	11417
	280	2466	6228	1724	11357
	300	2495	6147	1791	11144
	325	2533	6078	1757	10401
	350	2565	6036	1701	9262
	375	2601	5983	1756	8155
	400	2631	5953	1866	6927
	425	2663	5918	2038	5935
	450	2693	5914	2284	5032
	475	2708	5931	2559	4439
500	2708	5957	2594	4004	
520.3	2708	5974	2624	3766	

	Q (cfs)	WUA (ft ² /1000ft)			
		Holding	Juvenile	Larvae	Spawning
Lost River Sucker	30	1439	14680	6743	2704
	48	1750	13360	4187	3808
	60	1906	12272	3337	4414
	80	2047	10280	2772	5269
	83.6	2069	9914	2707	5359
	100	2169	8630	2584	5578
	110	2231	7946	2478	5663
	120	2292	7631	2378	5745
	130	2308	7389	2315	5800
	140	2325	7256	2279	5848
	150	2345	7143	2250	5886
	160	2365	7032	2160	5924
	170	2383	6893	2055	5963
	180	2405	6812	1964	6005
	190	2426	6731	1893	6048
	200	2449	6650	1822	6093
	220	2493	6531	1712	6185
	240	2541	6419	1676	6286
	260	2589	6318	1696	6389
	280	2641	6228	1724	6497
	300	2691	6147	1791	6604
	325	2708	6078	1757	6691
	350	2708	6036	1701	6745
	375	2708	5983	1756	6780
	400	2708	5953	1866	6776
	425	2708	5918	2038	6719
	450	2708	5914	2284	6642
	475	2708	5931	2559	6558

	Q (cfs)	WUA (ft ² /1000ft)			
		Adult	Juvenile	Fry	Spawning
Winter Rainbow Trout	30	2816	9094		
	48	3570	11111		
	60	4040	11997		
	80	4636	12810		
	83.6	4741	12886		
	100	5162	12944		
	110	5405	12825		
	120	5629	12660		
	130	5808	12327		
	140	5962	11909		
	150	6120	11469		
	160	6248	11016		
	170	6358	10552		
	180	6458	10156		
	190	6527	9706		
	200	6568	9289		
	220	6456	8504		
	240	6297	7812		
	260	6104	7159		
	280	5892	6598		
	300	5674	6101		
	325	5443	5692		
	350	5168	5413		
	375	4916	5217		
	400	4635	5039		
	425	4428	4895		
	450	4289	4758		
	475	4190	4654		

500	2708	5957	2594	6452
520.3	2708	5974	2624	6367

500	4097	4534
520.3	4045	4441