

12-4-2009

Ex. 280-US-467

Unknown

Follow this and additional works at: <https://digitalcommons.law.uidaho.edu/klamath>

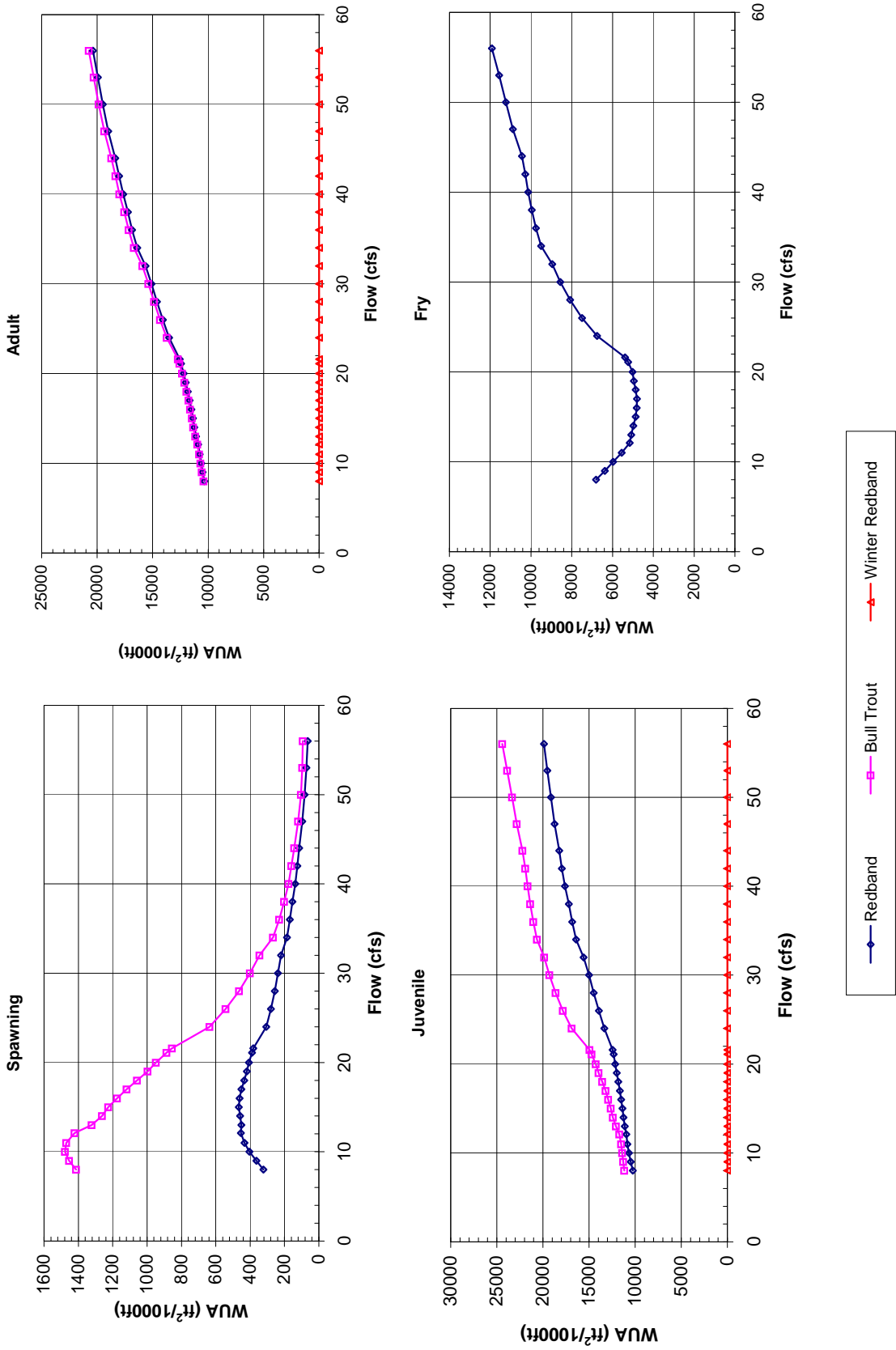
---

### Recommended Citation

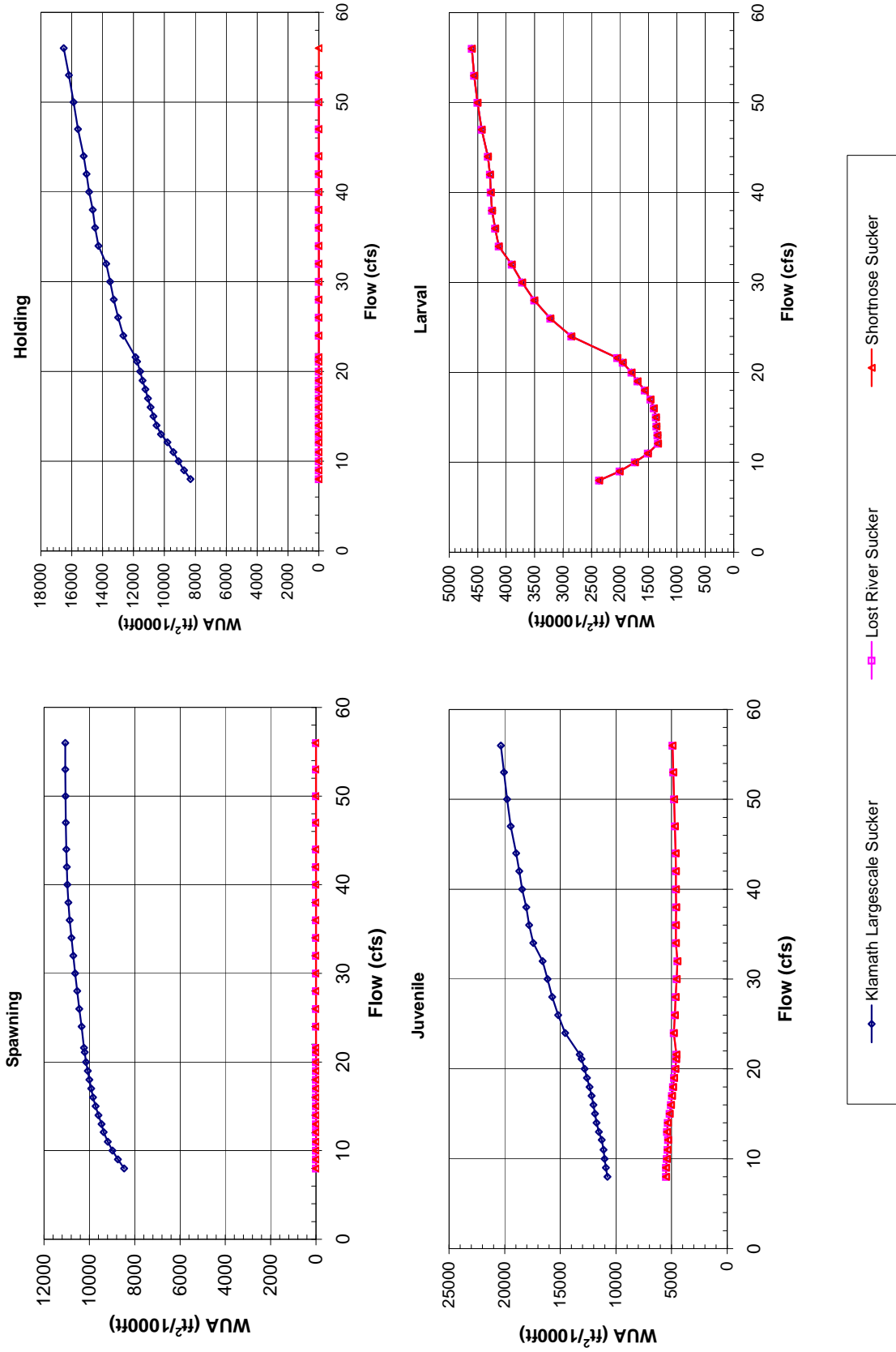
Unknown, "Ex. 280-US-467" (2009). *In re Klamath River (Klamath Tribe)*. 199.  
<https://digitalcommons.law.uidaho.edu/klamath/199>

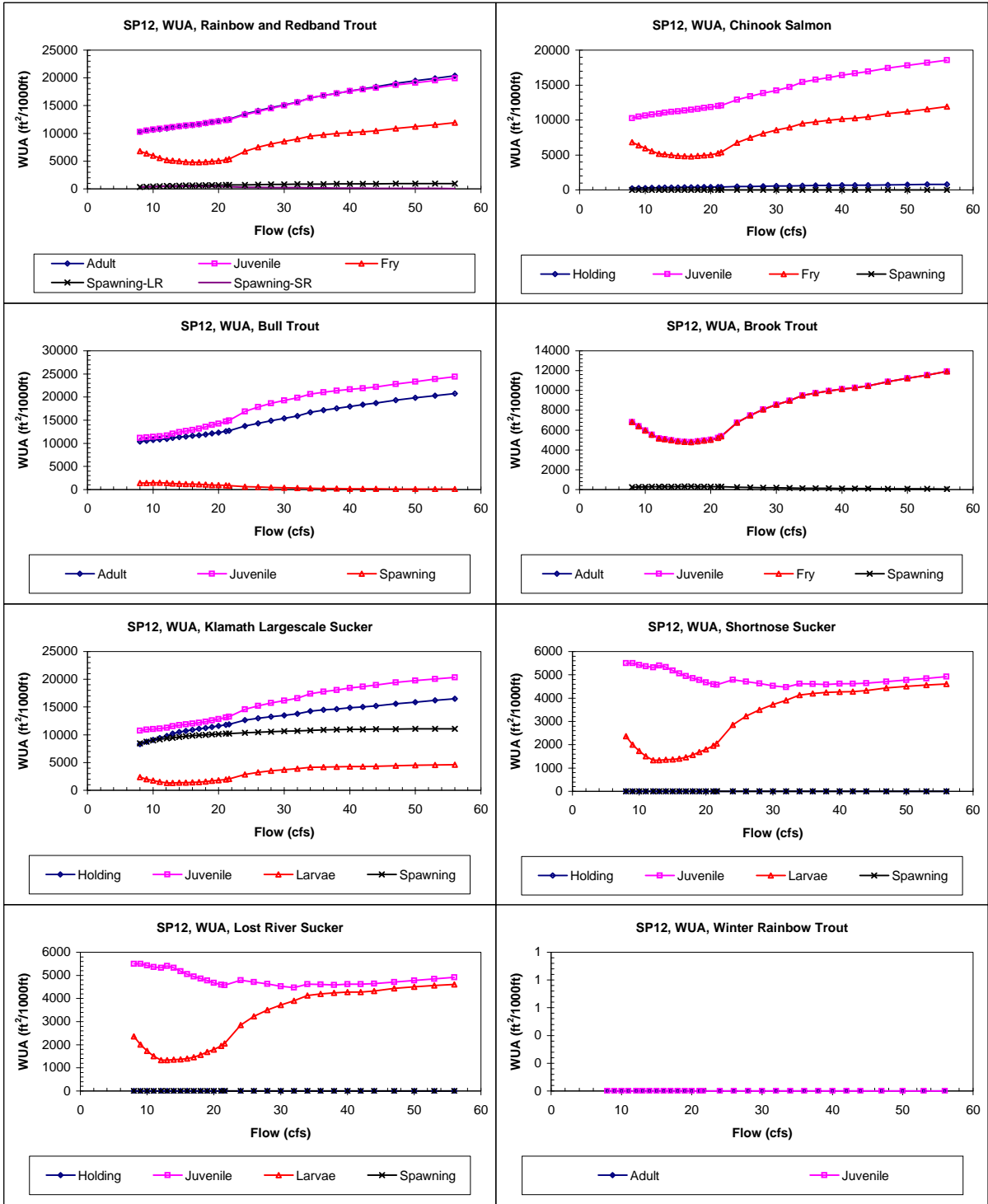
This Expert Report is brought to you for free and open access by the Hedden-Nicely at Digital Commons @ UIdaho Law. It has been accepted for inclusion in In re Klamath River (Klamath Tribe) by an authorized administrator of Digital Commons @ UIdaho Law. For more information, please contact [annablaine@uidaho.edu](mailto:annablaine@uidaho.edu).

**Site 652**  
**Priority Species Habitat - Flow Curves**



Site 652  
 Priority Species Habitat - Flow Curves





Claim Reach 652 Sprague River, Site 12, Composite WUA

	WUA (ft <sup>2</sup> /1000ft)				
	Q (cfs)	Adult	Juvenile	Spawning -	
				Large River	Small River
8	10330	10263	6813	326	323
9	10505	10486	6381	375	364
10	10630	10675	5975	426	403
11	10750	10834	5546	469	433
12.1	10905	10966	5164	509	454
13	11091	11112	5077	528	451
14	11255	11260	4980	564	459
15	11378	11386	4866	596	466
16	11519	11523	4815	618	462
17	11667	11665	4800	637	450
18	11830	11829	4860	652	435
19	12023	12005	4949	668	419
20	12204	12163	5023	684	406
21.1	12437	12343	5228	701	390
21.6	12562	12442	5382	710	382
24	13512	13334	6761	732	306
26	14082	13922	7490	761	279
28	14615	14495	8083	789	257
30	15107	15013	8559	814	238
32	15633	15586	8961	837	220
34	16381	16400	9499	853	186
36	16842	16828	9752	871	169
38	17223	17196	9964	887	154
40	17649	17622	10134	899	138
42	18011	17939	10275	912	126
44	18377	18227	10449	923	115
47	18992	18733	10887	933	97
50	19491	19124	11226	943	83
53	19927	19521	11562	952	72
56	20374	19892	11912	962	65

	WUA (ft <sup>2</sup> /1000ft)			
	Q (cfs)	Holding	Juvenile	Spawning
8	238	10258	6813	0
9	254	10475	6381	0
10	269	10650	5975	0
11	284	10791	5546	0
12.1	302	10900	5164	0
13	322	11042	5077	0
14	337	11169	4980	0
15	349	11262	4866	0
16	361	11367	4815	0
17	373	11472	4800	0
18	386	11600	4860	0
19	399	11742	4949	0
20	411	11852	5023	0
21.1	424	11983	5228	0
21.6	431	12061	5382	0
24	478	12902	6761	0
26	504	13380	7490	0
28	528	13840	8083	0
30	550	14240	8559	0
32	572	14703	8961	0
34	606	15450	9499	0
36	626	15786	9752	0
38	643	16063	9964	0
40	663	16428	10134	0
42	681	16694	10275	0
44	698	16946	10449	0
47	728	17426	10887	0
50	754	17804	11226	0
53	781	18189	11562	0
56	808	18552	11912	0

	WUA (ft <sup>2</sup> /1000ft)			
	Q (cfs)	Adult	Juvenile	Spawning
8	10402	11179		1414
9	10573	11303		1453
10	10695	11416		1477
11	10815	11512		1471
12.1	10971	11704		1422
13	11169	12084		1322
14	11342	12413		1263
15	11469	12647		1226
16	11616	12908		1175
17	11770	13201		1119
18	11941	13560		1059
19	12147	13951		997
20	12337	14271		948
21.1	12584	14705		886
21.6	12715	14950		856
24	13733	16874		636
26	14329	17839		542
28	14881	18627		464
30	15383	19286		401
32	15917	19867		346
34	16692	20649		267
36	17161	21040		230
38	17549	21369		203
40	17987	21655		177
42	18355	21898		159
44	18726	22208		144
47	19350	22838		121
50	19856	23350		104
53	20297	23876		96
56	20748	24400		94

	WUA (ft <sup>2</sup> /1000ft)			
	Q (cfs)	Adult	Juvenile	Spawning
8	6813	6813	6813	234
9	6381	6381	6381	254
10	5975	5975	5975	274
11	5546	5546	5546	288
12.1	5164	5164	5164	297
13	5077	5077	5077	290
14	4980	4980	4980	294
15	4866	4866	4866	303
16	4815	4815	4815	307
17	4800	4800	4800	308
18	4860	4860	4860	306
19	4949	4949	4949	300
20	5023	5023	5023	297
21.1	5228	5228	5228	289
21.6	5382	5382	5382	284
24	6761	6761	6761	227
26	7490	7490	7490	208
28	8083	8083	8083	192
30	8559	8559	8559	179
32	8961	8961	8961	166
34	9499	9499	9499	139
36	9752	9752	9752	129
38	9964	9964	9964	120
40	10134	10134	10134	110
42	10275	10275	10275	103
44	10449	10449	10449	96
47	10887	10887	10887	84
50	11226	11226	11226	75
53	11562	11562	11562	68
56	11912	11912	11912	61

Claim Reach 652 Sprague River, Site 12, Composite WUA

	WUA (ft <sup>2</sup> /1000ft)				
	Q (cfs)	Holding	Juvenile	Larvae	Spawning
Klamath Largescale Sucker	8	8320	10761	2365	8464
	9	8739	10913	2005	8744
	10	9078	11015	1737	8977
	11	9416	11124	1511	9187
	12.1	9809	11284	1332	9366
	13	10233	11536	1339	9466
	14	10518	11745	1359	9597
	15	10706	11878	1368	9723
	16	10893	12029	1402	9833
	17	11065	12188	1462	9922
	18	11236	12373	1565	10002
	19	11423	12615	1691	10070
	20	11575	12824	1795	10142
	21.1	11766	13103	1953	10208
	21.6	11866	13251	2048	10236
	24	12661	14568	2855	10345
	26	12998	15201	3224	10439
	28	13283	15727	3503	10531
	30	13515	16147	3720	10625
	32	13762	16592	3901	10709
	34	14278	17419	4130	10790
	36	14497	17792	4195	10865
	38	14649	18063	4246	10926
	40	14877	18430	4272	10966
	42	15042	18693	4283	10990
	44	15229	18958	4319	11011
	47	15594	19446	4433	11040
	50	15886	19783	4504	11056
	53	16190	20061	4564	11064
	56	16515	20347	4604	11056

	WUA (ft <sup>2</sup> /1000ft)				
	Q (cfs)	Holding	Juvenile	Larvae	Spawning
Shorthead Sucker	8	0	5498	2365	0
	9	0	5499	2005	0
	10	0	5428	1737	0
	11	0	5362	1511	0
	12.1	0	5323	1332	0
	13	0	5405	1339	0
	14	0	5329	1359	0
	15	0	5181	1368	0
	16	0	5058	1402	0
	17	0	4952	1462	0
	18	0	4859	1565	0
	19	0	4780	1691	0
	20	0	4671	1795	0
	21.1	0	4596	1953	0
	21.6	0	4570	2048	0
	24	0	4790	2855	0
	26	0	4713	3224	0
	28	0	4628	3503	0
	30	0	4532	3720	0
	32	0	4476	3901	0
	34	0	4619	4130	0
	36	0	4604	4195	0
	38	0	4585	4246	0
	40	0	4622	4272	0
	42	0	4623	4283	0
	44	0	4639	4319	0
	47	0	4713	4433	0
	50	0	4777	4504	0
	53	0	4846	4564	0
	56	0	4921	4604	0

	WUA (ft <sup>2</sup> /1000ft)				
	Q (cfs)	Holding	Juvenile	Larvae	Spawning
Lost River Sucker	8	0	5498	2365	0
	9	0	5499	2005	0
	10	0	5428	1737	0
	11	0	5362	1511	0
	12.1	0	5323	1332	0
	13	0	5405	1339	0
	14	0	5329	1359	0
	15	0	5181	1368	0
	16	0	5058	1402	0
	17	0	4952	1462	0
	18	0	4859	1565	0
	19	0	4780	1691	0
	20	0	4671	1795	0
	21.1	0	4596	1953	0
	21.6	0	4570	2048	0
	24	0	4790	2855	0
	26	0	4713	3224	0
	28	0	4628	3503	0
	30	0	4532	3720	0
	32	0	4476	3901	0
	34	0	4619	4130	0
	36	0	4604	4195	0
	38	0	4585	4246	0
	40	0	4622	4272	0
	42	0	4623	4283	0
	44	0	4639	4319	0
	47	0	4713	4433	0
	50	0	4777	4504	0
	53	0	4846	4564	0
	56	0	4921	4604	0

	WUA (ft <sup>2</sup> /1000ft)				
	Q (cfs)	Adult	Juvenile	Fry	Spawning
Winter Rainbow Trout	8	0	0		
	9	0	0		
	10	0	0		
	11	0	0		
	12.1	0	0		
	13	0	0		
	14	0	0		
	15	0	0		
	16	0	0		
	17	0	0		
	18	0	0		
	19	0	0		
	20	0	0		
	21.1	0	0		
	21.6	0	0		
	24	0	0		
	26	0	0		
	28	0	0		
	30	0	0		
	32	0	0		
	34	0	0		
	36	0	0		
	38	0	0		
	40	0	0		
	42	0	0		
	44	0	0		
	47	0	0		
	50	0	0		
	53	0	0		
	56	0	0		