

12-4-2009

Ex. 280-US-476

Unknown

Follow this and additional works at: <https://digitalcommons.law.uidaho.edu/klamath>

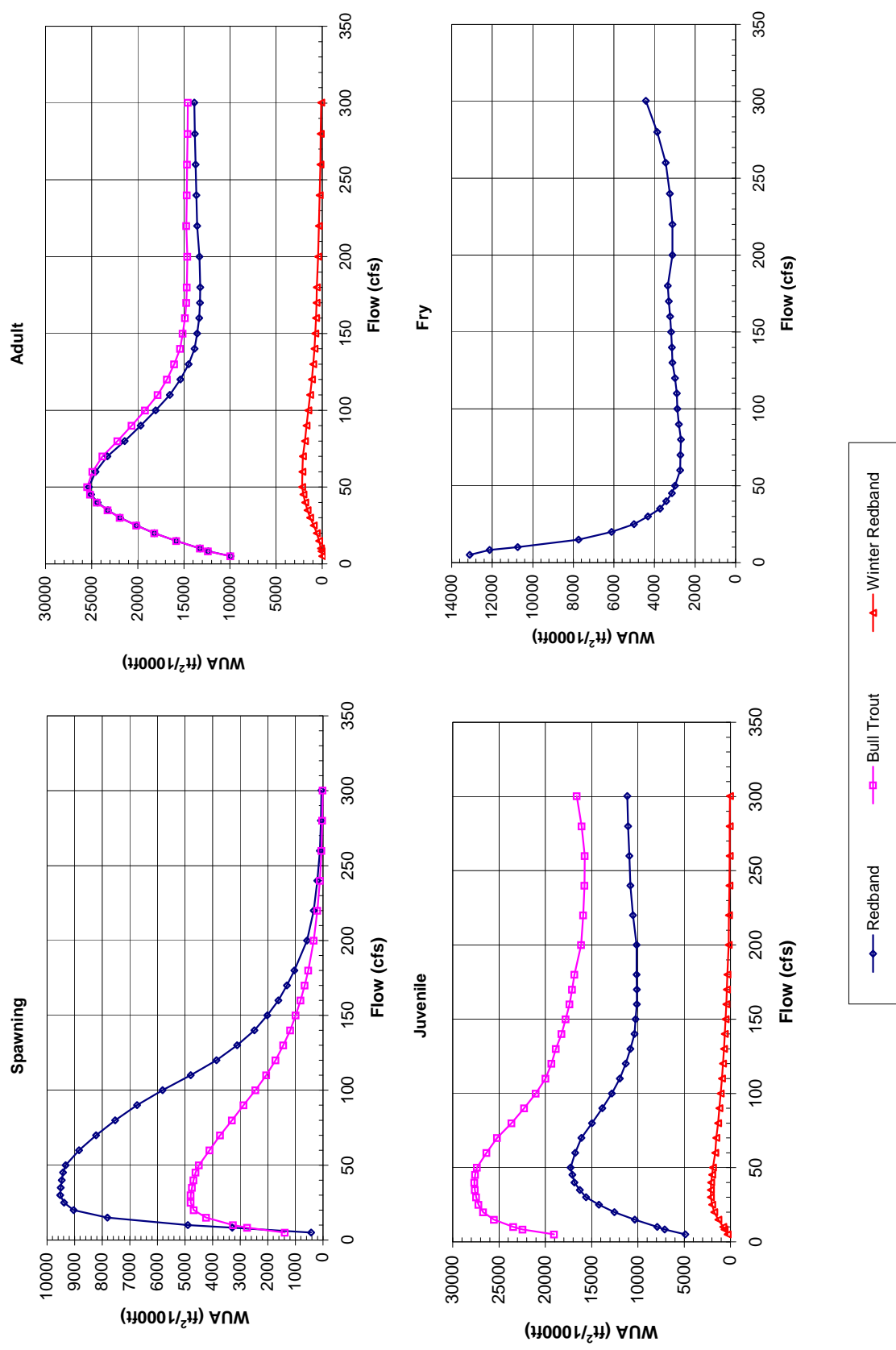
---

### Recommended Citation

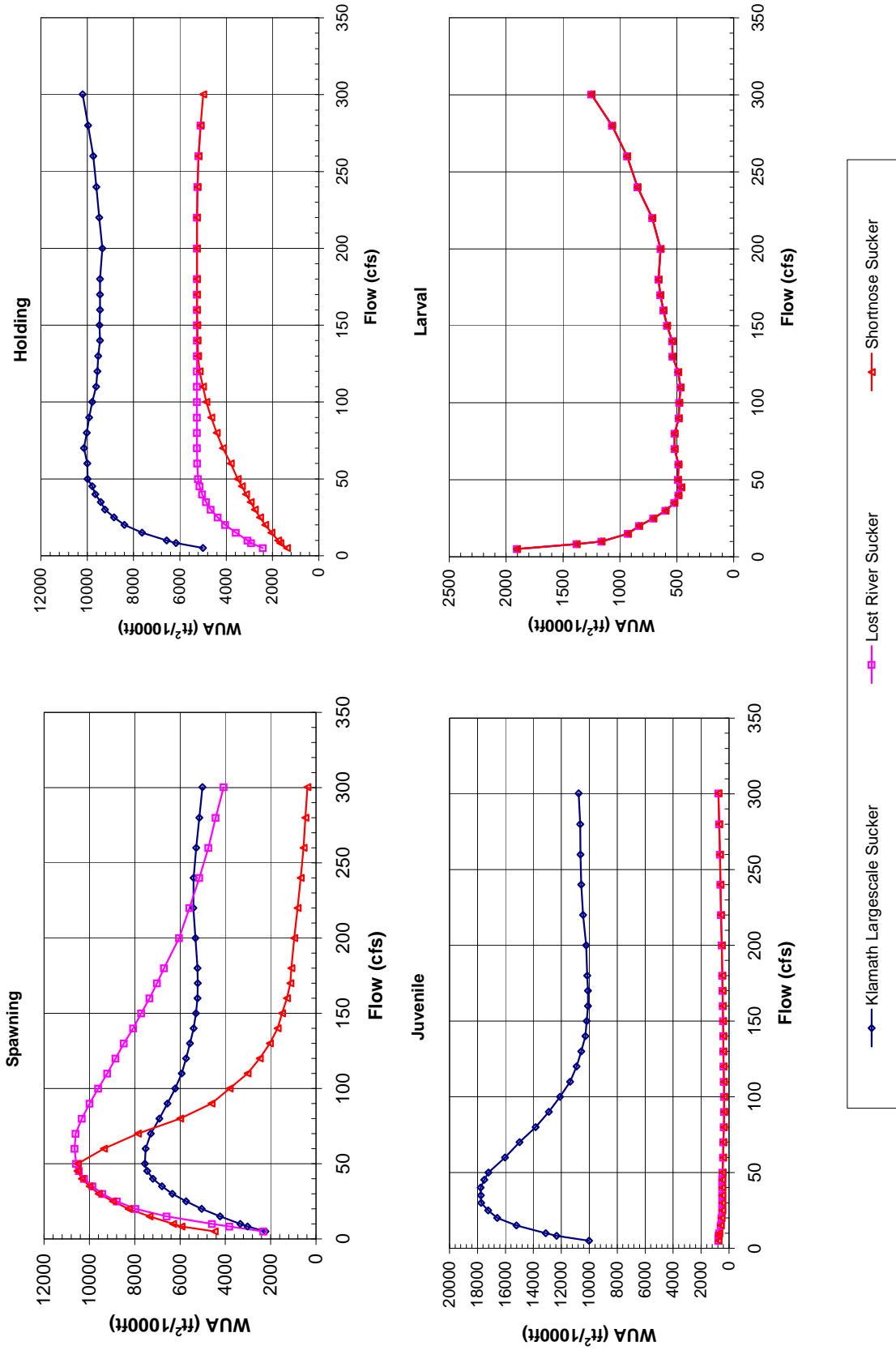
Unknown, "Ex. 280-US-476" (2009). *In re Klamath River (Klamath Tribe)*. 208.  
<https://digitalcommons.law.uidaho.edu/klamath/208>

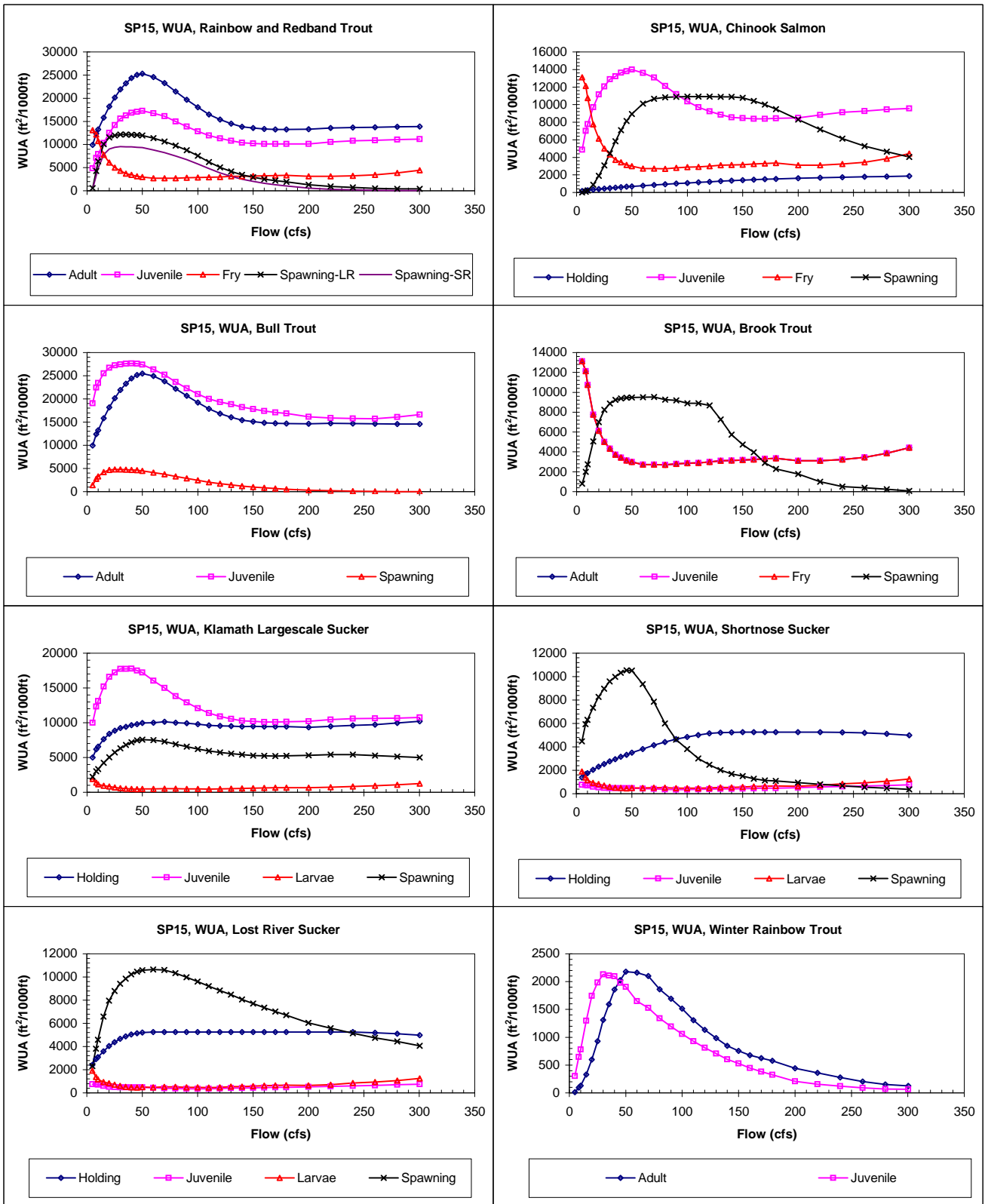
This Expert Report is brought to you for free and open access by the Hedden-Nicely at Digital Commons @ UIdaho Law. It has been accepted for inclusion in In re Klamath River (Klamath Tribe) by an authorized administrator of Digital Commons @ UIdaho Law. For more information, please contact [annablaine@uidaho.edu](mailto:annablaine@uidaho.edu).

Site 655  
Priority Species Habitat - Flow Curves



Site 655  
Priority Species Habitat - Flow Curves





**Claim Reach 655 Sprague River, Site 15, Composite WUA (EA Field Data, Recalibrated in April, 2007)**

	WUA (ft <sup>2</sup> /1000ft)				
	Q (cfs)	Adult	Juvenile	Spawning - Spawning -	
				Fry	Large River
5	9930	4864	13115	556	432
8.3	12370	7098	12137	4290	3293
10	13242	7921	10744	6380	4896
15	15819	10335	7749	10079	7812
20	18191	12523	6119	11549	9038
25	20141	14215	5005	11969	9386
30	21927	15601	4319	12145	9522
35	23230	16268	3722	12136	9509
40	24352	16857	3427	12100	9470
45.2	25046	17084	3145	12045	9417
50	25297	17278	2989	11946	9328
60	24582	16773	2734	11359	8839
70	23281	16114	2725	10626	8228
80	21428	14968	2699	9760	7533
90	19688	13853	2800	8751	6742
100	18054	12826	2874	7542	5808
110	16513	11960	2904	6229	4791
120	15373	11300	2986	5069	3863
130	14491	10804	3112	4162	3111
140	13840	10372	3138	3427	2484
150	13552	10242	3173	2940	2022
160	13336	10124	3233	2505	1614
170	13243	10113	3294	2212	1308
180	13237	10138	3342	1936	1039
200	13312	10140	3119	1299	580
220	13559	10524	3113	963	337
240	13651	10813	3244	739	204
260	13740	10912	3450	527	115
280	13807	11060	3861	412	74
300.3	13859	11143	4420	395	54

	WUA (ft <sup>2</sup> /1000ft)				
	Q (cfs)	Holding	Juvenile	Fry	Spawning
8.3	231	7024	12137	82	
10	255	7781	10744	212	
15	326	9716	7749	876	
20	393	11163	6119	1884	
25	451	12065	5005	3089	
30	507	12895	4319	4467	
35	554	13232	3722	5836	
40	605	13625	3427	7081	
45.2	652	13806	3145	8144	
50	698	13996	2989	8932	
60	779	13596	2734	10108	
70	866	13076	2725	10677	
80	939	12119	2699	10825	
90	1013	11202	2800	10891	
100	1083	10377	2874	10907	
110	1150	9705	2904	10916	
120	1220	9224	2986	10906	
130	1286	8854	3112	10899	
140	1345	8538	3138	10894	
150	1406	8468	3173	10767	
160	1457	8390	3233	10419	
170	1504	8396	3294	9997	
180	1549	8440	3342	9494	
200	1613	8489	3119	8296	
220	1681	8824	3113	7182	
240	1734	9128	3244	6119	
260	1780	9274	3450	5276	
280	1826	9453	3861	4643	
300.3	1856	9565	4420	4045	

	WUA (ft <sup>2</sup> /1000ft)				
	Q (cfs)	Adult	Juvenile	Fry	Spawning
8.3	12376	22445		2751	
10	13246	23450		3263	
15	15823	25541		4234	
20	18198	26702		4682	
25	20152	27217		4793	
30	21950	27466		4791	
35	23273	27596		4748	
40	24423	27668		4694	
45.2	25159	27580		4615	
50	25462	27384		4500	
60	24922	26351		4116	
70	23818	25207		3727	
80	22191	23663		3303	
90	20659	22280		2874	
100	19214	21041		2446	
110	17843	19986		2055	
120	16837	19331		1720	
130	16037	18852		1440	
140	15414	18254		1188	
150	15114	17793		990	
160	14868	17375		815	
170	14736	17090		664	
180	14687	16866		532	
200	14630	16140		332	
220	14732	15909		205	
240	14683	15765		116	
260	14639	15741		57	
280	14600	16070		25	
300.3	14576	16604		8	

	WUA (ft <sup>2</sup> /1000ft)				
	Q (cfs)	Adult	Juvenile	Fry	Spawning
8.3	12137	12137	12137	2000	
10	10744	10744	10744	2738	
15	7749	7749	7749	5049	
20	6119	6119	6119	6990	
25	5005	5005	5005	8233	
30	4319	4319	4319	8873	
35	3722	3722	3722	9226	
40	3427	3427	3427	9389	
45.2	3145	3145	3145	9460	
50	2989	2989	2989	9473	
60	2734	2734	2734	9506	
70	2725	2725	2725	9529	
80	2699	2699	2699	9255	
90	2800	2800	2800	9194	
100	2874	2874	2874	8888	
110	2904	2904	2904	8885	
120	2986	2986	2986	8669	
130	3112	3112	3112	7257	
140	3138	3138	3138	5745	
150	3173	3173	3173	4728	
160	3233	3233	3233	3968	
170	3294	3294	3294	2901	
180	3342	3342	3342	2287	
200	3119	3119	3119	1769	
220	3113	3113	3113	988	
240	3244	3244	3244	518	
260	3450	3450	3450	400	
280	3861	3861	3861	246	
300.3	4420	4420	4420	69	

Claim Reach 655 Sprague River, Site 15, Composite WUA (EA Field Data, Recalibrated in April, 2007)

	WUA (ft <sup>2</sup> /1000ft)				
	Q (cfs)	Holding	Juvenile	Larvae	Spawning
Klamath Largescale Sucker	5	5007	10014	1906	2228
	8.3	6169	12331	1381	3025
	10	6568	13121	1162	3346
	15	7635	15207	930	4238
	20	8396	16589	831	5048
	25	8839	17234	706	5735
	30	9230	17740	600	6334
	35	9409	17756	523	6795
	40	9648	17777	485	7201
	45.2	9788	17510	461	7452
	50	9981	17209	490	7552
	60	9995	16033	486	7516
	70	10142	14993	519	7293
	80	10016	13833	519	6906
	90	9919	12903	483	6550
	100	9786	12095	478	6209
	110	9617	11374	468	5926
	120	9559	10915	488	5735
	130	9527	10569	538	5563
	140	9444	10282	540	5400
	150	9471	10194	586	5291
	160	9449	10094	618	5233
	170	9447	10091	644	5219
	180	9453	10141	662	5226
	200	9352	10223	643	5323
	220	9481	10445	715	5416
	240	9607	10575	846	5402
	260	9739	10627	936	5281
	280	9967	10644	1070	5151
	300.3	10198	10761	1252	5013

	WUA (ft <sup>2</sup> /1000ft)				
	Q (cfs)	Holding	Juvenile	Larvae	Spawning
Shortnose Sucker	5	1382	757	1906	4470
	8.3	1670	744	1381	5939
	10	1760	702	1162	6301
	15	2048	599	930	7339
	20	2318	529	831	8271
	25	2546	490	706	8960
	30	2769	477	600	9585
	35	2949	479	523	9981
	40	3147	484	485	10325
	45.2	3327	476	461	10526
	50	3507	473	490	10517
	60	3808	427	486	9355
	70	4138	403	519	7864
	80	4409	367	519	5996
	90	4650	359	483	4615
	100	4854	359	478	3808
	110	5008	364	468	3020
	120	5146	384	488	2484
	130	5218	407	538	2031
	140	5242	414	540	1697
	150	5252	434	586	1495
	160	5258	453	618	1282
	170	5258	470	644	1138
	180	5258	483	662	1084
	200	5258	521	643	957
	220	5258	568	715	814
	240	5242	614	846	675
	260	5191	652	936	552
	280	5106	702	1070	465
	300.3	4988	754	1252	374

	WUA (ft <sup>2</sup> /1000ft)				
	Q (cfs)	Holding	Juvenile	Larvae	Spawning
Lost River Sucker	5	2419	757	1906	2321
	8.3	2922	744	1381	3819
	10	3080	702	1162	4588
	15	3583	599	930	6593
	20	4036	529	831	7961
	25	4368	490	706	8783
	30	4671	477	600	9424
	35	4866	479	523	9858
	40	5040	484	485	10223
	45.2	5153	476	461	10458
	50	5211	473	490	10579
	60	5244	427	486	10645
	70	5258	403	519	10602
	80	5258	367	519	10333
	90	5258	359	483	9984
	100	5258	359	478	9609
	110	5258	364	468	9211
	120	5258	384	488	8840
	130	5258	407	538	8478
	140	5258	414	540	8066
	150	5258	434	586	7715
	160	5258	453	618	7349
	170	5258	470	644	7012
	180	5258	483	662	6700
	200	5258	521	643	6045
	220	5258	568	715	5582
	240	5242	614	846	5147
	260	5191	652	936	4753
	280	5106	702	1070	4429
	300.3	4988	754	1252	4071

	WUA (ft <sup>2</sup> /1000ft)				
	Q (cfs)	Adult	Juvenile	Fry	Spawning
Winter Rainbow Trout	5	12	303		
	8.3	97	646		
	10	130	782		
	15	328	1296		
	20	599	1744		
	25	929	1984		
	30	1313	2131		
	35	1593	2109		
	40	1857	2097		
	45.2	2027	1978		
	50	2180	1906		
	60	2160	1648		
	70	2100	1529		
	80	1861	1342		
	90	1695	1194		
	100	1516	1059		
	110	1308	930		
	120	1131	814		
	130	987	707		
	140	844	604		
	150	756	529		
	160	679	447		
	170	626	380		
	180	579	324		
	200	441	209		
	220	359	156		
	240	279	122		
	260	202	89		
	280	154	71		
	300.3	125	65		