

12-4-2009

Ex. 280-US-480

Unknown

Follow this and additional works at: <https://digitalcommons.law.uidaho.edu/klamath>

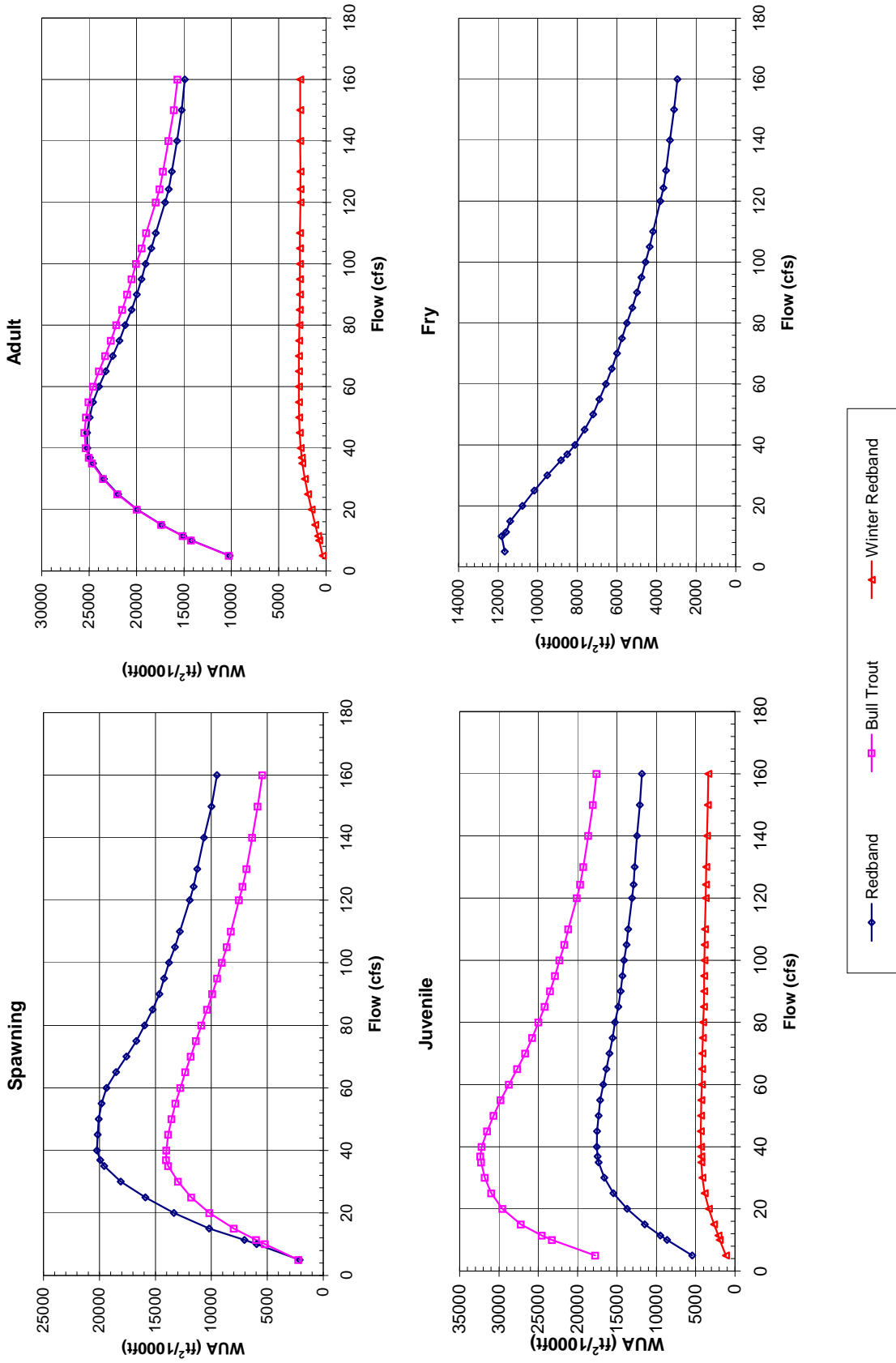
---

### Recommended Citation

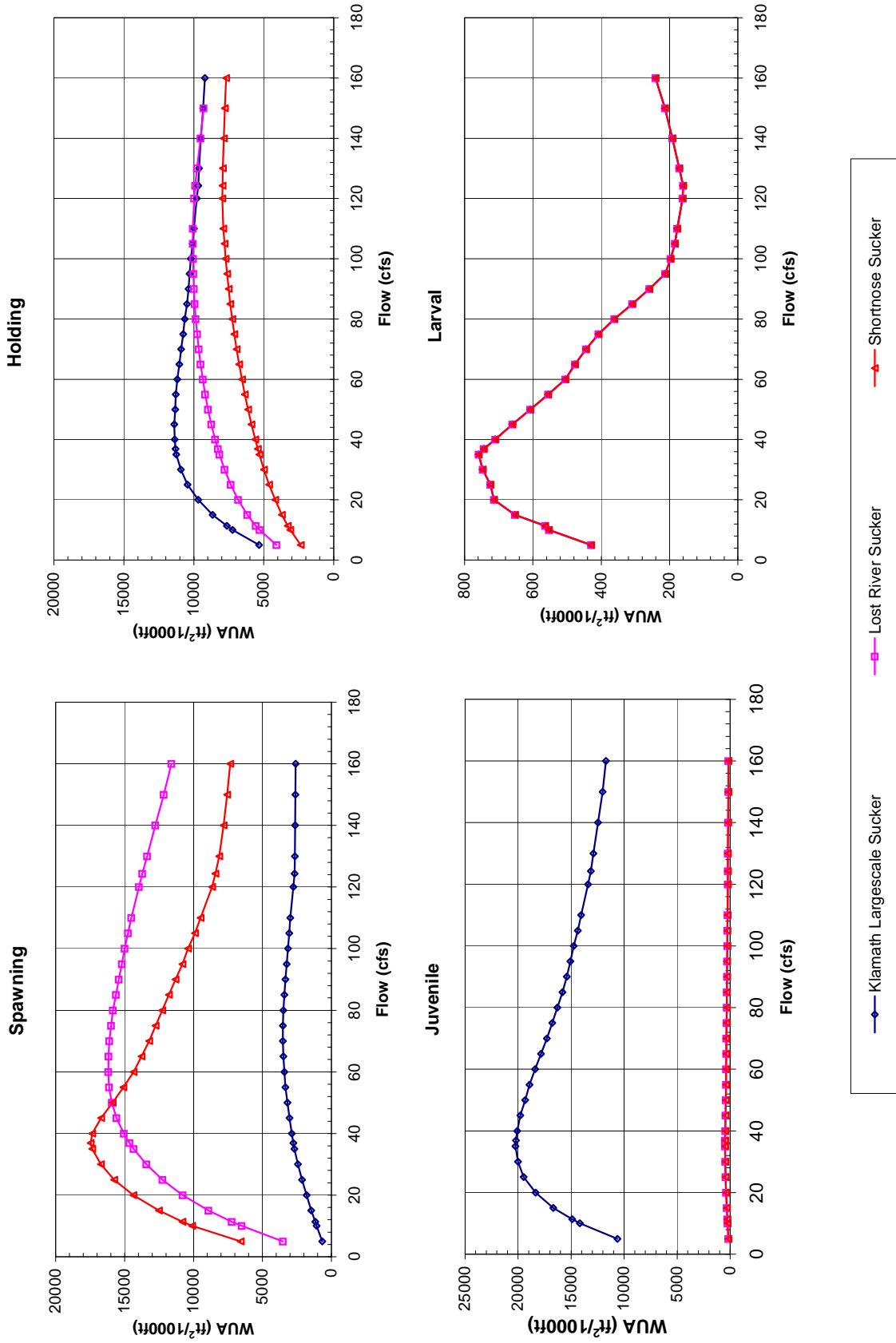
Unknown, "Ex. 280-US-480" (2009). *In re Klamath River (Klamath Tribe)*. 212.  
<https://digitalcommons.law.uidaho.edu/klamath/212>

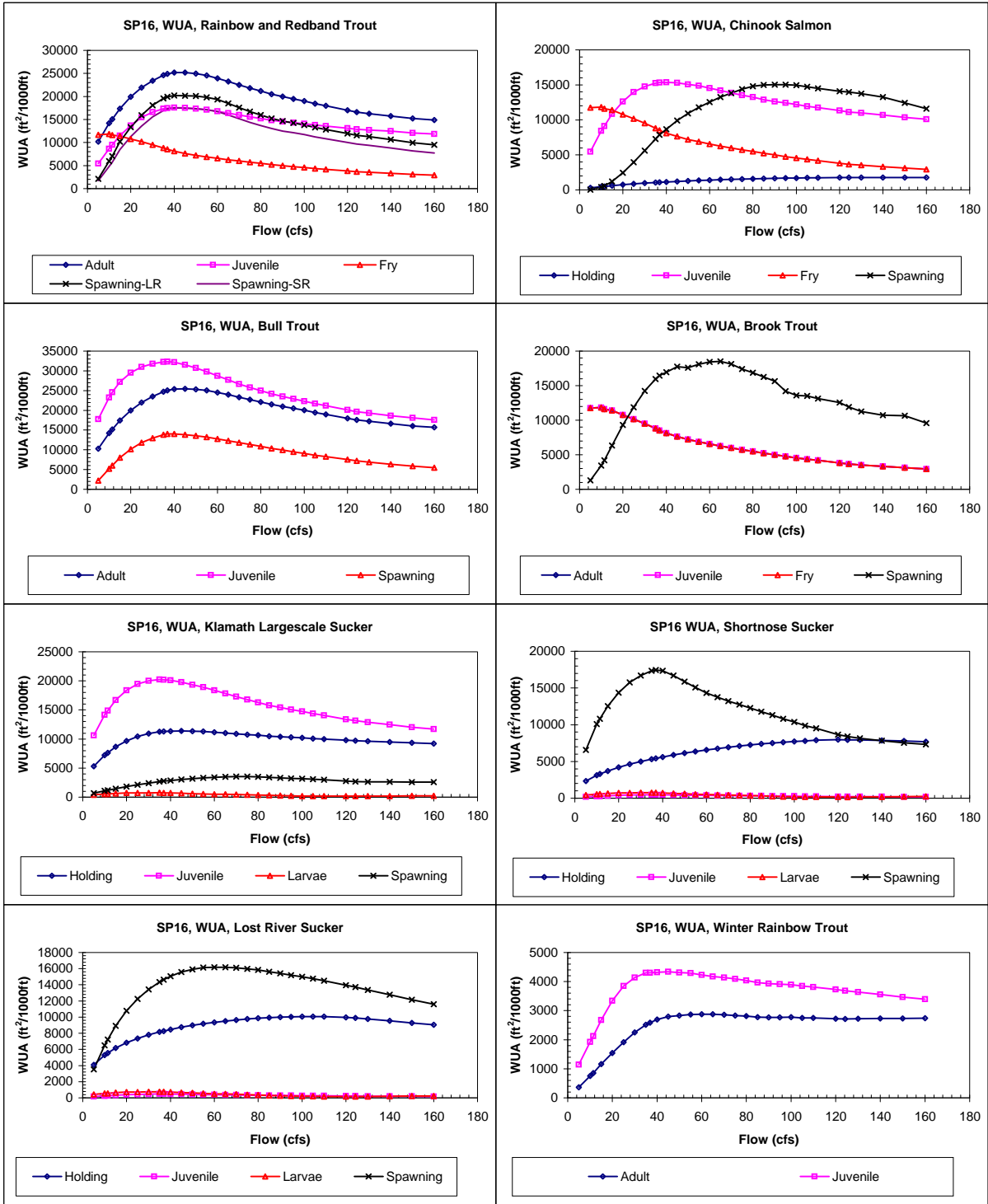
This Expert Report is brought to you for free and open access by the Hedden-Nicely at Digital Commons @ UIdaho Law. It has been accepted for inclusion in In re Klamath River (Klamath Tribe) by an authorized administrator of Digital Commons @ UIdaho Law. For more information, please contact [annablaine@uidaho.edu](mailto:annablaine@uidaho.edu).

**Site 656**  
**Priority Species Habitat - Flow Curves**



Site 656  
Priority Species Habitat - Flow Curves





Claim Reach 656 Sprague River, Site 16, Composite WUA (Data Collected in 2007)

	WUA (ft <sup>2</sup> /1000ft)					
	Q	Spawning -				Small
	(cfs)	Adult	Juvenile	Fry	Large River	River
5	10185	5450	11668	2101	1721	
10	14188	8641	11825	5949	4804	
11	15074	9487	11602	7050	5749	
15	17350	11484	11399	10204	8451	
20	19906	13711	10774	13341	11267	
25	21942	15472	10170	15898	13592	
30	23428	16617	9520	18084	15596	
35	24596	17343	8828	19578	16952	
37	24910	17451	8507	19920	17273	
40	25191	17553	8114	20227	17535	
45	25217	17544	7631	20168	17469	
50	24950	17325	7206	20071	17368	
55	24574	17125	6885	19810	17132	
60	23953	16757	6564	19369	16740	
65	23258	16361	6262	18516	15982	
70	22505	15951	5992	17581	15160	
75	21798	15565	5743	16702	14366	
80	21190	15247	5496	15967	13697	
85	20514	14834	5228	15247	13038	
90	19964	14541	4994	14646	12494	
95	19477	14312	4763	14230	12120	
100	19023	14102	4553	13782	11723	
105	18442	13791	4354	13258	11247	
110	17981	13584	4181	12820	10846	
120	16987	13096	3815	11944	10029	
124	16587	12886	3660	11583	9698	
130	16264	12738	3526	11258	9392	
140	15736	12456	3321	10659	8816	
150	15223	12099	3112	9985	8169	
160	14894	11828	2946	9501	7710	

	WUA (ft <sup>2</sup> /1000ft)				
	Q	Spawning -			
	(cfs)	Holding	Juvenile	Fry	Spawning
5	294	5470	11745	52	
10	462	8439	11827	401	
11.4	504	9111	11602	566	
15	615	10838	11399	1204	
20	750	12616	10774	2443	
25	871	13957	10170	3945	
30	973	14750	9520	5622	
35	1065	15257	8828	7278	
36.9	1095	15314	8507	7872	
40	1142	15364	8114	8677	
45	1214	15306	7631	9888	
50	1278	15071	7206	10926	
55	1341	14863	6885	11808	
60	1398	14535	6564	12540	
65	1451	14197	6262	13243	
70	1500	13855	5992	13828	
75	1546	13531	5743	14389	
80	1588	13258	5496	14809	
85	1622	12898	5228	14980	
90	1654	12631	4994	15041	
95	1681	12415	4763	15034	
100	1706	12221	4553	14957	
105	1723	11946	4354	14740	
110	1741	11764	4181	14519	
120	1767	11323	3815	14078	
124.3	1773	11127	3660	13957	
130	1779	10980	3526	13738	
140	1783	10692	3321	13247	
150	1779	10356	3112	12440	
160	1774	10077	2946	11605	

	WUA (ft <sup>2</sup> /1000ft)			
	Q	Spawning -		
	(cfs)	Adult	Juvenile	Fry
5	10268	17777	2225	5217
10	14248	23277	6003	8001
11.4	15133	24558	10162	11804
15	17405	27210	12980	13857
20	19958	29552	14035	14012
25	22006	30987	13845	13562
30	23509	31790	13198	12772
35	24701	32273	12319	11847
36.9	25029	32357	11368	10893
40	25350	32193	10370	9922
45	25480	31522	9488	8626
50	25319	30694	8256	7522
55	25054	29780	7215	6866
60	24547	28751	6342	5862
65	23962	27700	5455	
70	23312	26674		
75	22690	25774		
80	22138	24983		
85	21503	24177		
90	20982	23485		
95	20501	22882		
100	20041	22327		
105	19454	21693		
110	18975	21194		
120	17963	20105		
124.3	17561	19666		
130	17206	19282		
140	16627	18667		
150	16061	18069		
160	15676	17585		

	WUA (ft <sup>2</sup> /1000ft)			
	Q	Spawning -		
	(cfs)	Adult	Juvenile	Fry
5	11745	11745	11745	1312
10	11827	11827	11827	3448
11.4	11602	11602	11602	4181
15	11399	11399	11399	6327
20	10774	10774	10774	9301
25	10170	10170	10170	11889
30	9520	9520	9520	14232
35	8828	8828	8828	15939
36.9	8507	8507	8507	16452
40	8114	8114	8114	16964
45	7631	7631	7631	17735
50	7206	7206	7206	17610
55	6885	6885	6885	18076
60	6564	6564	6564	18421
65	6262	6262	6262	18525
70	5992	5992	5992	18115
75	5743	5743	5743	17421
80	5496	5496	5496	16863
85	5228	5228	5228	16252
90	4994	4994	4994	15630
95	4763	4763	4763	14183
100	4553	4553	4553	13596
105	4354	4354	4354	13527
110	4181	4181	4181	13111
120	3815	3815	3815	12539
124.3	3660	3660	3660	11923
130	3526	3526	3526	11258
140	3321	3321	3321	10744
150	3112	3112	3112	10654
160	2946	2946	2946	9589

Claim Reach 656 Sprague River, Site 16, Composite WUA

	Q (cfs)	WUA (ft <sup>2</sup> /1000ft)			
		Holding	Juvenile	Larvae	Spawning
Klamath Largesacle Sucker	5	5330	10634	430	664
	10	7227	14176	553	1073
	11.4	7635	14902	564	1176
	15	8652	16681	653	1461
	20	9681	18353	714	1802
	25	10455	19484	724	2135
	30	10927	20013	747	2424
	35	11248	20242	759	2694
	36.9	11298	20198	744	2765
	40	11360	20086	711	2875
	45	11394	19794	660	3044
	50	11332	19342	608	3185
	55	11292	18933	555	3328
	60	11172	18386	505	3413
	65	11037	17844	477	3478
	70	10895	17297	444	3521
	75	10766	16772	408	3520
	80	10653	16307	361	3493
	85	10490	15803	309	3410
	90	10382	15405	259	3334
	95	10298	15066	213	3238
	100	10217	14749	197	3158
	105	10080	14362	184	3068
	110	9998	14045	177	2979
120	9786	13401	162	2764	
124.3	9689	13136	160	2664	
130	9625	12897	171	2652	
140	9492	12474	192	2630	
150	9324	12041	213	2607	
160	9213	11726	241	2598	

	Q (cfs)	WUA (ft <sup>2</sup> /1000ft)			
		Holding	Juvenile	Larvae	Spawning
Shorthnose Sucker	5	2347	167	430	6573
	10	3111	238	553	10102
	11.4	3287	254	564	10802
	15	3703	318	653	12515
	20	4191	380	714	14370
	25	4615	431	724	15761
	30	4981	458	747	16711
	35	5311	479	759	17343
	36.9	5424	480	744	17456
	40	5603	466	711	17352
	45	5876	442	660	16709
	50	6125	409	608	15867
	55	6359	394	555	15096
	60	6565	381	505	14341
	65	6755	370	477	13763
	70	6936	356	444	13218
	75	7103	340	408	12757
	80	7259	325	361	12273
	85	7392	308	309	11787
	90	7513	296	259	11314
	95	7621	283	213	10815
	100	7722	270	197	10393
	105	7808	257	184	9889
	110	7883	247	177	9499
120	7956	228	162	8659	
124.3	7946	220	160	8414	
130	7921	212	171	8143	
140	7860	198	192	7819	
150	7779	180	213	7555	
160	7691	164	241	7339	

	Q (cfs)	WUA (ft <sup>2</sup> /1000ft)			
		Holding	Juvenile	Larvae	Spawning
Lost River Sucker	5	4097	167	430	3517
	10	5299	238	553	6509
	11.4	5563	254	564	7233
	15	6169	318	653	8921
	20	6830	380	714	10783
	25	7364	431	724	12250
	30	7803	458	747	13411
	35	8162	479	759	14350
	36.9	8279	480	744	14650
	40	8466	466	711	15049
	45	8743	442	660	15584
	50	8981	409	608	15926
	55	9190	394	555	16125
	60	9359	381	505	16178
	65	9509	370	477	16165
	70	9646	356	444	16100
	75	9759	340	408	15979
	80	9867	325	361	15839
	85	9943	308	309	15629
	90	9994	296	259	15422
	95	10029	283	213	15206
	100	10055	270	197	15001
	105	10067	257	184	14762
	110	10064	247	177	14513
120	9978	228	162	13956	
124.3	9895	220	160	13709	
130	9763	212	171	13373	
140	9525	198	192	12763	
150	9288	180	213	12155	
160	9054	164	241	11600	

	Q (cfs)	WUA (ft <sup>2</sup> /1000ft)			
		Adult	Juvenile	Fry	Spawning
Winter Rainbow Trout	5	366	1141		
	10	750	1928		
	11.4	857	2119		
	15	1161	2673		
	20	1544	3337		
	25	1915	3849		
	30	2249	4142		
	35	2510	4299		
	36.9	2583	4298		
	40	2692	4320		
	45	2791	4341		
	50	2835	4306		
	55	2872	4288		
	60	2877	4227		
	65	2874	4178		
	70	2858	4138		
	75	2832	4089		
	80	2814	4040		
	85	2776	3970		
	90	2766	3930		
	95	2772	3911		
	100	2772	3891		
	105	2753	3844		
	110	2749	3812		
120	2721	3728			
124.3	2716	3686			
130	2720	3642			
140	2731	3560			
150	2735	3466			
160	2740	3396			