

12-4-2009

Ex. 281-US-421

Unknown

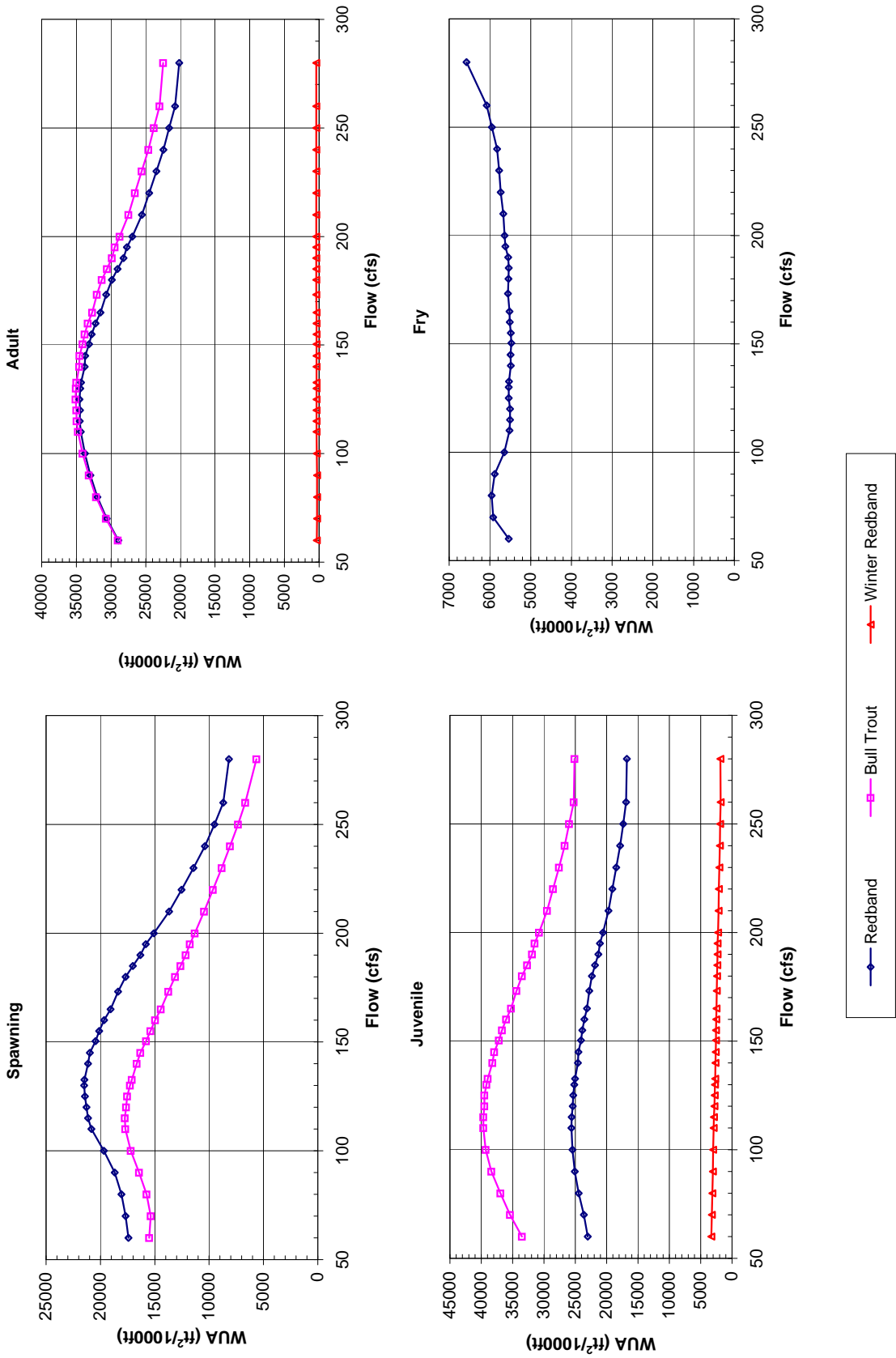
Follow this and additional works at: <https://digitalcommons.law.uidaho.edu/klamath>

Recommended Citation

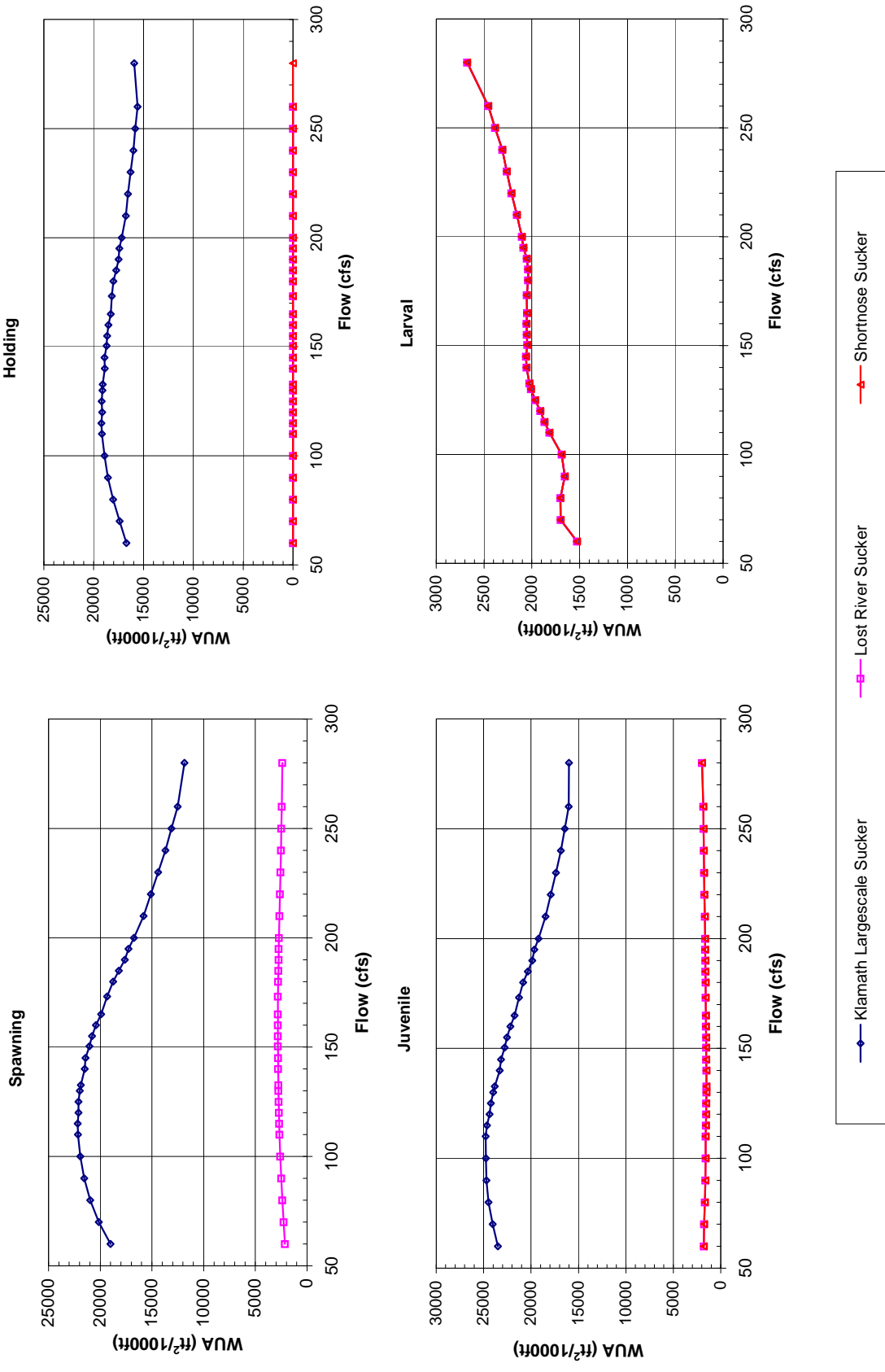
Unknown, "Ex. 281-US-421" (2009). *In re Klamath River (Klamath Tribe)*. 238.
<https://digitalcommons.law.uidaho.edu/klamath/238>

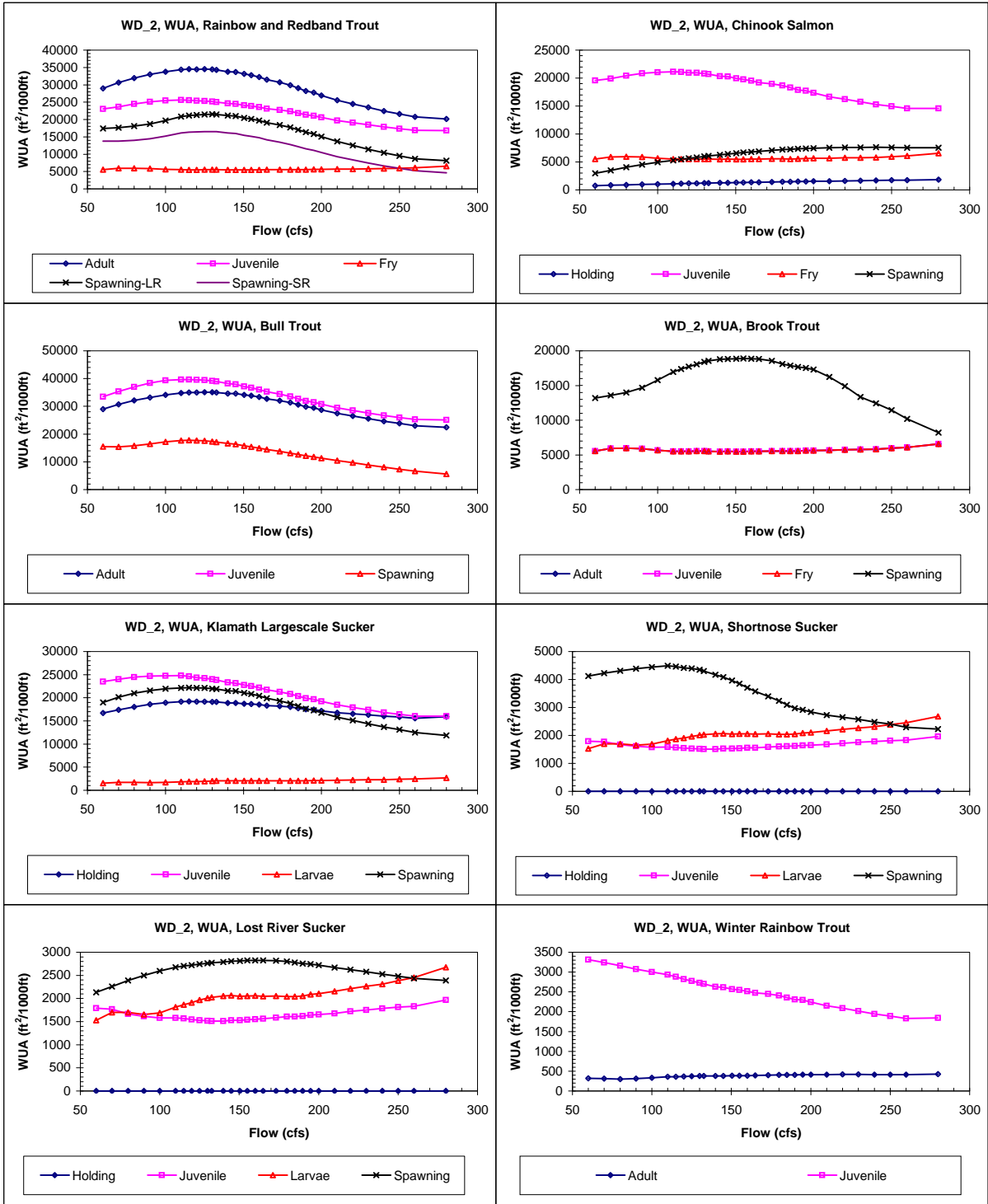
This Expert Report is brought to you for free and open access by the Hedden-Nicely at Digital Commons @ UIdaho Law. It has been accepted for inclusion in In re Klamath River (Klamath Tribe) by an authorized administrator of Digital Commons @ UIdaho Law. For more information, please contact annablaine@uidaho.edu.

Site WD 2 Priority Species Habitat - Flow Curves



**Site WD 2
Priority Species Habitat - Flow Curves**





Claim Reach 668 Wood River, Site 2, Composite WUA

	WUA (ft ² /1000ft)				
	Q	Spawning - Spawning -			
	(cfs)	Adult	Juvenile	Fry	Large River Small River
60	28944	23032	5538	17417	13798
70	30621	23643	5917	17679	13797
80	31966	24460	5959	18073	13999
90	32969	25088	5883	18690	14420
100	33764	25452	5647	19696	15221
110	34367	25606	5517	20828	16122
115	34504	25565	5504	21136	16347
120	34454	25393	5507	21285	16412
125	34544	25350	5537	21423	16478
130	34426	25180	5537	21504	16509
132.7	34314	25055	5530	21476	16466
140	33791	24603	5487	21129	16109
145	33720	24515	5496	20973	15964
150.4	33149	24100	5471	20453	15450
155	32791	23898	5489	20123	15140
160	32233	23570	5511	19672	14722
165	31516	23135	5516	19066	14119
173.2	30706	22766	5559	18376	13449
180	29880	22367	5547	17690	12798
185	29043	21861	5538	17020	12188
190	28213	21339	5551	16324	11561
195	27730	21095	5618	15825	11125
200	26946	20592	5638	15092	10482
210	25545	19700	5673	13672	9289
220	24507	19083	5733	12546	8378
230	23473	18463	5773	11444	7471
240	22447	17838	5825	10381	6628
250	21629	17369	5952	9517	5907
260	20780	16886	6080	8705	5265
280	20184	16795	6574	8168	4604

	WUA (ft ² /1000ft)			
	Q	Spawning		
	(cfs)	Holding	Juvenile	Fry
60	767	19598	5538	2995
70	839	19893	5917	3508
80	908	20432	5959	4053
90	974	20831	5883	4523
100	1038	21031	5647	4941
110	1103	21144	5517	5305
115	1131	21102	5504	5483
120	1157	20953	5507	5651
125	1186	20922	5537	5810
130	1212	20790	5537	5977
132.7	1226	20694	5530	6063
140	1260	20332	5487	6288
145	1287	20263	5496	6430
150.4	1312	19931	5471	6567
155	1335	19779	5489	6680
160	1358	19535	5511	6786
165	1381	19207	5516	6898
173.2	1423	18951	5559	7071
180	1457	18668	5547	7198
185	1476	18285	5538	7273
190	1495	17890	5551	7341
195	1521	17719	5618	7414
200	1540	17339	5638	7462
210	1578	16670	5673	7530
220	1620	16215	5733	7580
230	1657	15757	5773	7613
240	1692	15286	5825	7619
250	1728	14936	5952	7602
260	1758	14569	6080	7530
280	1861	14561	6574	7543

	WUA (ft ² /1000ft)		
	Q	Spawning	
	(cfs)	Adult	Juvenile
60	29029	33505	15505
70	30749	35397	15363
80	32145	36951	15755
90	33215	38377	16438
100	34087	39317	17210
110	34784	39677	17704
115	34969	39683	17747
120	34977	39521	17636
125	35114	39485	17541
130	35061	39179	17284
132.7	34986	38961	17123
140	34579	38211	16655
145	34562	37933	16323
150.4	34095	37180	15793
155	33812	36682	15403
160	33344	36047	14958
165	32733	35260	14454
173.2	32053	34381	13746
180	31341	33512	13127
185	30601	32698	12639
190	29866	31920	12156
195	29451	31482	11766
200	28752	30766	11318
210	27487	29485	10453
220	26546	28537	9657
230	25578	27593	8851
240	24612	26678	8072
250	23823	25973	7352
260	22993	25247	6677
280	22474	25139	5640

	WUA (ft ² /1000ft)			
	Q	Spawning		
	(cfs)	Adult	Juvenile	Fry
60	5538	5538	5538	13183
70	5917	5917	5917	13570
80	5959	5959	5959	13981
90	5883	5883	5883	14677
100	5647	5647	5647	15769
110	5517	5517	5517	16967
115	5504	5504	5504	17385
120	5507	5507	5507	17730
125	5537	5537	5537	18043
130	5537	5537	5537	18393
132.7	5530	5530	5530	18552
140	5487	5487	5487	18767
145	5496	5496	5496	18821
150.4	5471	5471	5471	18863
155	5489	5489	5489	18880
160	5511	5511	5511	18866
165	5516	5516	5516	18829
173.2	5559	5559	5559	18568
180	5547	5547	5547	18089
185	5538	5538	5538	17856
190	5551	5551	5551	17675
195	5618	5618	5618	17531
200	5638	5638	5638	17307
210	5673	5673	5673	16254
220	5733	5733	5733	14894
230	5773	5773	5773	13352
240	5825	5825	5825	12441
250	5952	5952	5952	11434
260	6080	6080	6080	10185
280	6574	6574	6574	8219

Claim Reach 668 Wood River, Site 2, Composite WUA

	WUA (ft ² /1000ft)				
	Q (cfs)	Holding	Juvenile	Larvae	Spawning
Klamath Largescale Sucker	60	16714	23504	1528	18996
	70	17399	24031	1699	20130
	80	18047	24478	1700	20974
	90	18568	24693	1655	21551
	100	18924	24770	1689	21938
	110	19178	24782	1815	22149
	115	19215	24637	1867	22188
	120	19151	24374	1910	22102
	125	19191	24235	1967	22104
	130	19135	23994	2009	21972
	132.7	19089	23833	2026	21885
	140	18874	23314	2054	21500
	145	18904	23178	2062	21423
	150.4	18712	22772	2048	21040
	155	18646	22534	2054	20793
	160	18509	22173	2056	20418
	165	18288	21735	2050	19925
	173.2	18179	21275	2052	19341
	180	18016	20826	2039	18759
	185	17750	20349	2039	18192
	190	17490	19885	2052	17630
	195	17434	19649	2088	17278
	200	17192	19221	2105	16746
	210	16777	18462	2156	15805
	220	16565	17930	2213	15095
	230	16302	17387	2262	14395
	240	16023	16846	2310	13703
	250	15833	16447	2386	13117
	260	15597	16026	2455	12511
	280	15923	16013	2675	11851

	WUA (ft ² /1000ft)				
	Q (cfs)	Holding	Juvenile	Larvae	Spawning
Shortnose Sucker	60	0	1792	1528	4127
	70	0	1769	1699	4226
	80	0	1667	1700	4308
	90	0	1611	1655	4390
	100	0	1579	1689	4447
	110	0	1581	1815	4490
	115	0	1568	1867	4458
	120	0	1545	1910	4418
	125	0	1531	1967	4399
	130	0	1515	2009	4348
	132.7	0	1512	2026	4305
	140	0	1512	2054	4166
	145	0	1526	2062	4089
	150.4	0	1531	2048	3960
	155	0	1542	2054	3851
	160	0	1553	2056	3703
	165	0	1561	2050	3578
	173.2	0	1587	2052	3396
	180	0	1606	2039	3239
	185	0	1609	2039	3097
	190	0	1618	2052	2970
	195	0	1642	2088	2917
	200	0	1654	2105	2835
	210	0	1679	2156	2723
	220	0	1721	2213	2648
	230	0	1753	2262	2579
	240	0	1783	2310	2477
	250	0	1814	2386	2402
	260	0	1833	2455	2296
	280	0	1965	2675	2226

	WUA (ft ² /1000ft)				
	Q (cfs)	Holding	Juvenile	Larvae	Spawning
Lost River Sucker	60	0	1792	1528	2131
	70	0	1769	1699	2260
	80	0	1667	1700	2389
	90	0	1611	1655	2498
	100	0	1579	1689	2597
	110	0	1581	1815	2678
	115	0	1568	1867	2703
	120	0	1545	1910	2723
	125	0	1531	1967	2744
	130	0	1515	2009	2762
	132.7	0	1512	2026	2771
	140	0	1512	2054	2787
	145	0	1526	2062	2804
	150.4	0	1531	2048	2812
	155	0	1542	2054	2821
	160	0	1553	2056	2823
	165	0	1561	2050	2821
	173.2	0	1587	2052	2817
	180	0	1606	2039	2801
	185	0	1609	2039	2779
	190	0	1618	2052	2756
	195	0	1642	2088	2744
	200	0	1654	2105	2719
	210	0	1679	2156	2668
	220	0	1721	2213	2625
	230	0	1753	2262	2576
	240	0	1783	2310	2527
	250	0	1814	2386	2481
	260	0	1833	2455	2433
	280	0	1965	2675	2391

	WUA (ft ² /1000ft)		
	Q (cfs)	Adult	Juvenile
Winter Rainbow Trout	60	322	3313
	70	310	3239
	80	302	3158
	90	316	3077
	100	334	2998
	110	359	2935
	115	362	2883
	120	366	2821
	125	371	2775
	130	376	2730
	132.7	378	2700
	140	380	2626
	145	381	2614
	150.4	384	2566
	155	386	2549
	160	386	2517
	165	391	2472
	173.2	400	2448
	180	406	2411
	185	405	2358
	190	405	2306
	195	413	2294
	200	413	2243
	210	413	2150
	220	416	2091
	230	417	2019
	240	414	1945
	250	416	1887
	260	413	1829
	280	429	1842