

8-3-2004

Ex. 277-US-418

R. Nawa
Oregon Department of Fish and Wildlife

K. Hartzell
Oregon Department of Fish and Wildlife

Follow this and additional works at: <https://digitalcommons.law.uidaho.edu/all>

Recommended Citation

Nawa, R. and Hartzell, K., "Ex. 277-US-418" (2004). *Hedden-Nicely Collection, All*. 340.
<https://digitalcommons.law.uidaho.edu/all/340>

This Expert Report is brought to you for free and open access by the Hedden-Nicely at Digital Commons @ UIIdaho Law. It has been accepted for inclusion in Hedden-Nicely Collection, All by an authorized administrator of Digital Commons @ UIIdaho Law. For more information, please contact annablaine@uidaho.edu.

Stream: Williamson River
Survey Type: ODFW Stream Habitat
Access: Canoe
Reach: 1 (Units 1-8)
Start: T35S-R07E-S30NE
Quad: Agency Lake
Date Surveyed: 3 August 04
Surveyors: R. Nawa K. Hartzell
Distance Surveyed: 3,605 m

Reach Description

The surveyed portion of reach 1 began at Modoc Point Road (RM 4.6) and ended at Highway 97 bridge.

Land Use

The dominant land use is cattle pasture with rural residential concentrated east of Modoc Point Road.

Valley and stream channel geometry

The river is in a broad agricultural valley over 1 km wide. The channel is extremely low gradient (0.05%) with moderate sinuosity (1.3). Terraces sloped abruptly to form narrow floodplains adjacent to the 32 m wide river. A homeowner who lives near the beginning of the reach said that the river had never overbanked on to low terraces where homes are located. Apparently the river is fully confined by low terraces, at least in the short term of human memory.

Substrate

The streambed was very fine textured with an estimated 62 percent of the streambed in sand and organics. Gravel was 7 percent of the streambed, cobble 19 percent, and bedrock 4 percent. Exposed bedrock suggests that alluvium is a relatively thin layer of substrate that is vulnerable to being lost with scour.

Spawning Gravel

Spawning gravel was concentrated in riffles which were 38 percent gravel and 33 percent cobble. Surveyors visually estimated that a total of 3,505 m² of gravel/cobble was suitable for Chinook salmon spawning at existing low flows. About 3,400 m² of the gravel (97%) was in 2 riffles immediately below the Highway 97 bridge (U4, U5; Photo 30). High amounts of sand/organics in riffles (24%) reduces the quality of gravel for spawning.

Riparian Vegetation

Grass dominates the riparian zone. Willows and hardwoods are sparse and an occasional patch of ponderosa pine border the river. Shade averaged only 5 percent. Riparian potential for willows, hardwoods and pine is high in most areas except where streambanks have been rip-rapped. About 450 m of streambank have been rip-rapped where homes have been built on terraces bordering the river (U1). Only 3 percent of streambanks are eroding which suggests that existing grass cover is adequate to stabilize streambanks.

Wood

Wood debris (1 pieces/100m) is not affecting channel morphology. Wood is not storing sediment or causing local scour.

Rearing and Adult holding Habitat

Due to very low stream gradient, the reach consists of 4 scour pools or glides up to 1,990 m long, separated by relatively short riffles (22m-130 m). Maximum depths were surprisingly deep (9.4 m) and have the potential to hold large numbers of spring Chinook (Map). Residual depths averaged 3.9 m. A lateral scour pool below Highway 97 (U8) is at least 3 m deep (possibly much deeper) and is strategically located between 2 riffles with large areas of spawning gravel (see map).

Streamflow

Streamflow was relatively low during the survey. Homes are located on terraces within 100 m of streambanks (U1). Several large pumps along the river have the capacity to withdraw large amounts of water (U1,U3). Adequacy of fish screens was not determined. A large water intake is at U8.

Stream Temperature

Stream temperature was 16 °C at 1600 pdt. Despite lack of shade, cool summer stream temperatures are typical for this river because of cold water discharge from Spring Creek.

Photo 29 Unit 3
The reach was dominated
by long deep pools or glides
with maximum depths up to
9.4 m.

Photo 30 Unit 4
Riffle below Highway
97 bridge had 3400 m²
of gravel/cobble suitable
for Chinook salmon
spawning. The deep
pool above riffle at water
intake structure is
excellent adult holding
water.

(2/6)



Map created with TOPO!® ©2002 National Geographic (www.nationalgeographic.com/topo)

Williamson R.

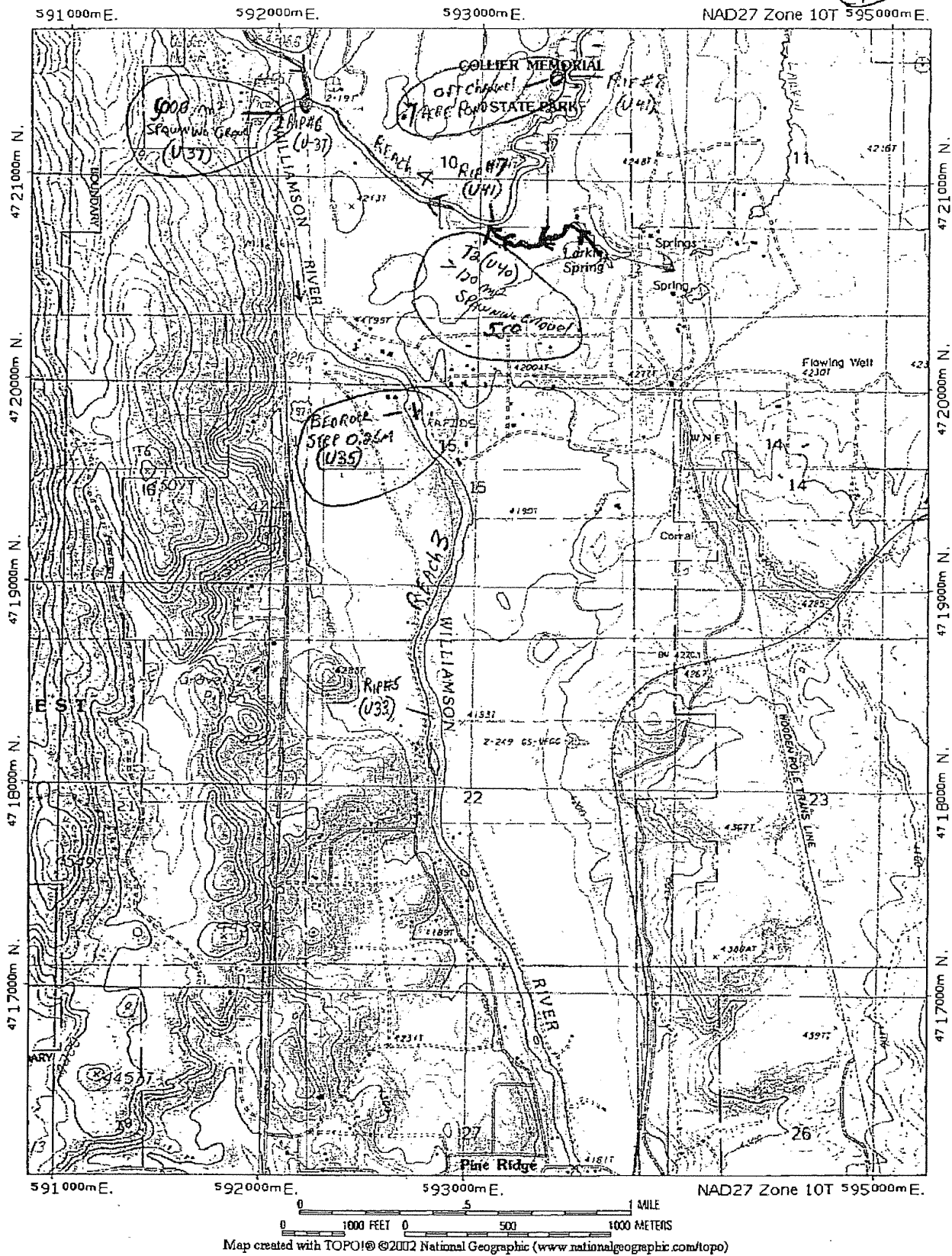
3/6



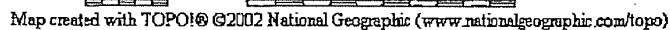
Map created with TOPO!® ©2002 National Geographic (www.nationalgeographic.com/topo)

William R.

4/6

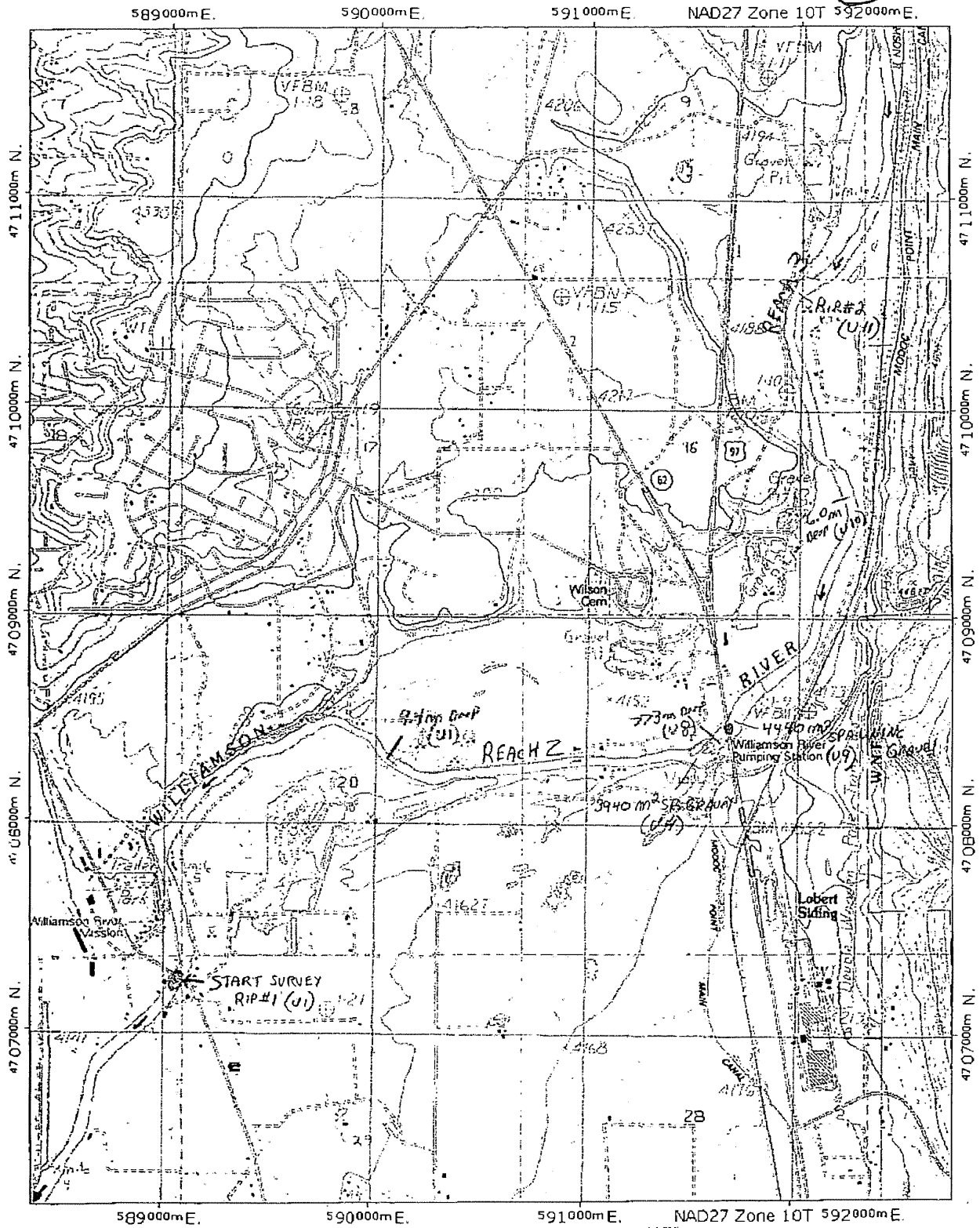


(5/6)



Williamson River

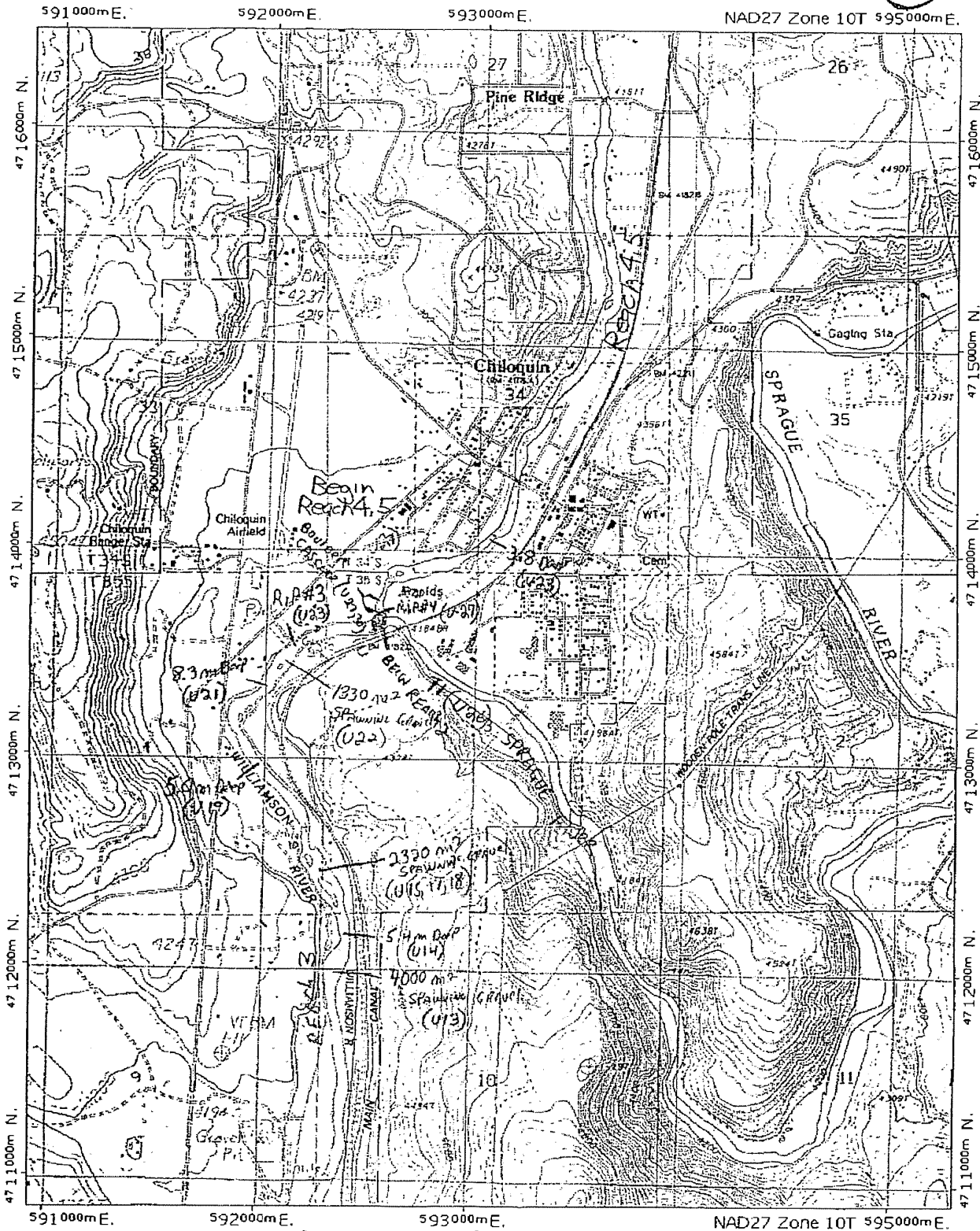
2/6



Map created with TOPO!® ©2002 National Geographic (www.nationalgeographic.com/topo)

Williamson R.

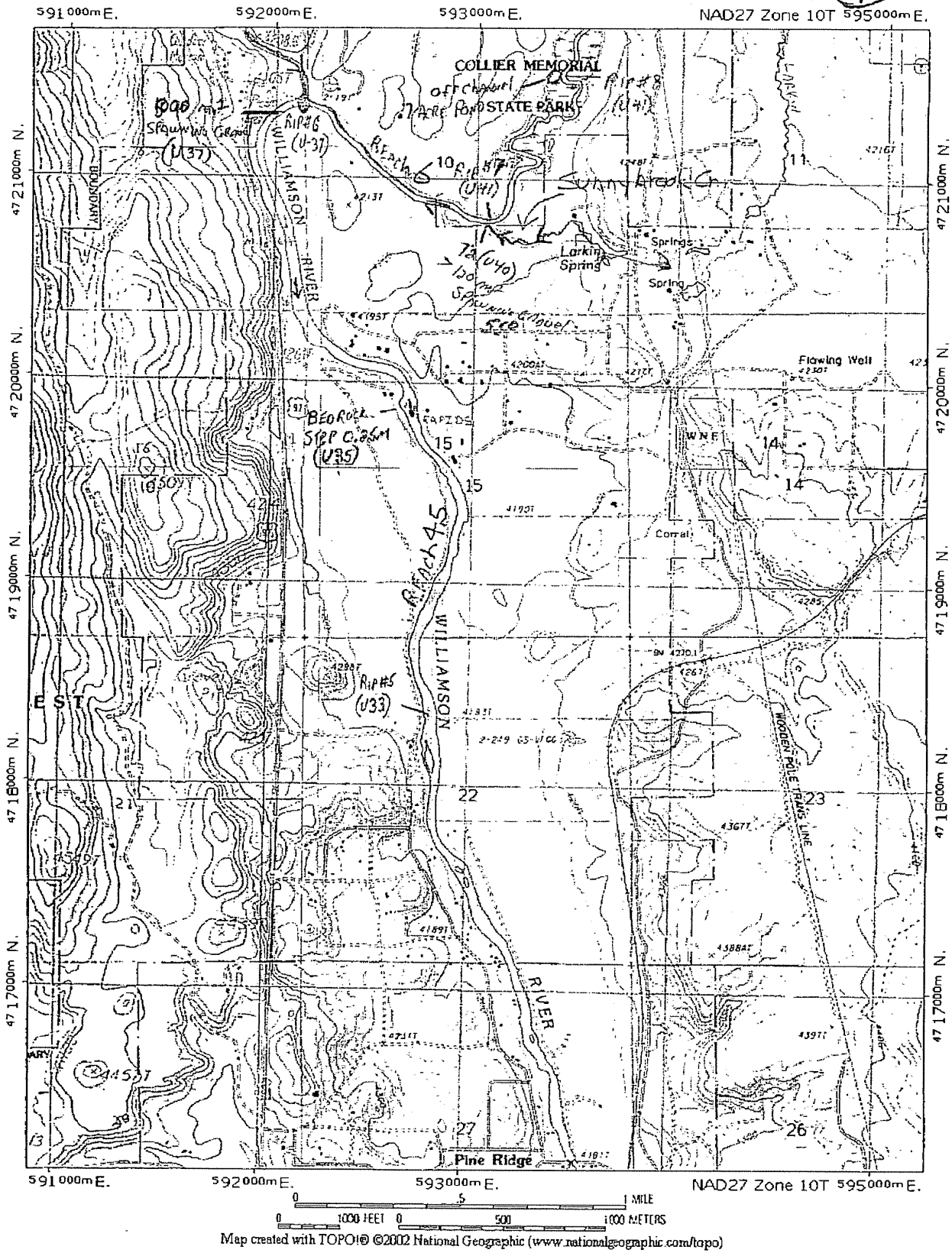
3/6



Map created with TOPO!® ©2002 National Geographic (www.nationalgeographic.com/topo)

Williamson R.

4/6



This topographic map depicts the Williamson River area in Idaho, featuring Collier Memorial State Park and Hilltop Reservoir. The map is overlaid with a UTM grid (NAD27 Zone 10T) and includes various geographical features and survey data.

Geographical Features:

- Water Bodies:** Hilltop Reservoir, Williamson River, Spring Hill, and several smaller streams and creeks.
- Parks and Recreation:** Collier Memorial State Park, Ouxkane Picnic Area, and Williamson River Campground.
- Infrastructure:** Road 57, Forest Boundary, and a Wooden Pole Span Line.
- Survey Points:** Numerous points are marked with elevations, including 45717, 45721, 45847, 45977, 46417, 46507, 46557, 46567, 46907, 47007, 47067, 47167, 47197, 47217, 47237, 47257, 47277, 47297, 47317, 47337, 47357, 47377, 47397, 47417, 47437, 47457, 47477, 47497, 47517, 47537, 47557, 47577, 47597, 47617, 47637, 47657, 47677, 47697, 47717, 47737, 47757, 47777, 47797, 47817, 47837, 47857, 47877, 47897, 47917, 47937, 47957, 47977, 47997, 48017, 48037, 48057, 48077, 48097, 48117, 48137, 48157, 48177, 48197, 48217, 48237, 48257, 48277, 48297, 48317, 48337, 48357, 48377, 48397, 48417, 48437, 48457, 48477, 48497, 48517, 48537, 48557, 48577, 48597, 48617, 48637, 48657, 48677, 48697, 48717, 48737, 48757, 48777, 48797, 48817, 48837, 48857, 48877, 48897, 48917, 48937, 48957, 48977, 48997, 49017, 49037, 49057, 49077, 49097, 49117, 49137, 49157, 49177, 49197, 49217, 49237, 49257, 49277, 49297, 49317, 49337, 49357, 49377, 49397, 49417, 49437, 49457, 49477, 49497, 49517, 49537, 49557, 49577, 49597, 49617, 49637, 49657, 49677, 49697, 49717, 49737, 49757, 49777, 49797, 49817, 49837, 49857, 49877, 49897, 49917, 49937, 49957, 49977, 49997, 50017, 50037, 50057, 50077, 50097, 50117, 50137, 50157, 50177, 50197, 50217, 50237, 50257, 50277, 50297, 50317, 50337, 50357, 50377, 50397, 50417, 50437, 50457, 50477, 50497, 50517, 50537, 50557, 50577, 50597, 50617, 50637, 50657, 50677, 50697, 50717, 50737, 50757, 50777, 50797, 50817, 50837, 50857, 50877, 50897, 50917, 50937, 50957, 50977, 50997, 51017, 51037, 51057, 51077, 51097, 51117, 51137, 51157, 51177, 51197, 51217, 51237, 51257, 51277, 51297, 51317, 51337, 51357, 51377, 51397, 51417, 51437, 51457, 51477, 51497, 51517, 51537, 51557, 51577, 51597, 51617, 51637, 51657, 51677, 51697, 51717, 51737, 51757, 51777, 51797, 51817, 51837, 51857, 51877, 51897, 51917, 51937, 51957, 51977, 51997, 52017, 52037, 52057, 52077, 52097, 52117, 52137, 52157, 52177, 52197, 52217, 52237, 52257, 52277, 52297, 52317, 52337, 52357, 52377, 52397, 52417, 52437, 52457, 52477, 52497, 52517, 52537, 52557, 52577, 52597, 52617, 52637, 52657, 52677, 52697, 52717, 52737, 52757, 52777, 52797, 52817, 52837, 52857, 52877, 52897, 52917, 52937, 52957, 52977, 52997, 53017, 53037, 53057, 53077, 53097, 53117, 53137, 53157, 53177, 53197, 53217, 53237, 53257, 53277, 53297, 53317, 53337, 53357, 53377, 53397, 53417, 53437, 53457, 53477, 53497, 53517, 53537, 53557, 53577, 53597, 53617, 53637, 53657, 53677, 53697, 53717, 53737, 53757, 53777, 53797, 53817, 53837, 53857, 53877, 53897, 53917, 53937, 53957, 53977, 53997, 54017, 54037, 54057, 54077, 54097, 54117, 54137, 54157, 54177, 54197, 54217, 54237, 54257, 54277, 54297, 54317, 54337, 54357, 54377, 54397, 54417, 54437, 54457, 54477, 54497, 54517, 54537, 54557, 54577, 54597, 54617, 54637, 54657, 54677, 54697, 54717, 54737, 54757, 54777, 54797, 54817, 54837, 54857, 54877, 54897, 54917, 54937, 54957, 54977, 54997, 55017, 55037, 55057, 55077, 55097, 55117, 55137, 55157, 55177, 55197, 55217, 55237, 55257, 55277, 55297, 55317, 55337, 55357, 55377, 55397, 55417, 55437, 55457, 55477, 55497, 55517, 55537, 55557, 55577, 55597, 55617, 55637, 55657, 55677, 55697, 55717, 55737, 55757, 55777, 55797, 55817, 55837, 55857, 55877, 55897, 55917, 55937, 55957, 55977, 55997, 56017, 56037, 56057, 56077, 56097, 56117, 56137, 56157, 56177, 56197, 56217, 56237, 56257, 56277, 56297, 56317, 56337, 56357, 56377, 56397, 56417, 56437, 56457, 56477, 56497, 56517, 56537, 56557, 56577, 56597, 56617, 56637, 56657, 56677, 56697, 56717, 56737, 56757, 56777, 56797, 56817, 56837, 56857, 56877, 56897, 56917, 56937, 56957, 56977, 56997, 57017, 57037, 57057, 57077, 57097, 57117, 57137, 57157, 57177, 57197, 57217, 57237, 57257, 57277, 57297, 57317, 57337, 57357, 57377, 57397, 57417, 57437, 57457, 57477, 57497, 57517, 57537, 57557, 57577, 57597, 57617, 57637, 57657, 57677, 57697, 57717, 57737,

Map created with TOPO!® ©2002 National Geographic (www.nationalgeographic.com/topo)