

12-4-2009

Ex. 277-US-437

Mike Gagner  
*R2 Resource Consultants*

Follow this and additional works at: <https://digitalcommons.law.uidaho.edu/all>

---

### Recommended Citation

Gagner, Mike, "Ex. 277-US-437" (2009). *Hedden-Nicely Collection, All*. 359.  
<https://digitalcommons.law.uidaho.edu/all/359>

This Misc Filing is brought to you for free and open access by the Hedden-Nicely at Digital Commons @ UIdaho Law. It has been accepted for inclusion in Hedden-Nicely Collection, All by an authorized administrator of Digital Commons @ UIdaho Law. For more information, please contact [annablaine@uidaho.edu](mailto:annablaine@uidaho.edu).

WM-7



"Rite in the Rain"  
ALL-WEATHER  
LEVEL BOOK  
No. 310 F

4/14/04



WM-7

04/14/64

Habitat Unit Selection  
 (2, 4) 2000' Reach Length  
 2000 X 2 = 400' pool unit #4  
 2000 X 4 = 800' con/grade unit #9

Crew: M Gagner

In | Out  
 Time 9:10 | 1:00  
 S.G 0:80 | 0:80

Equipment: Nilow sni  
 Marsh McBriny Model 2000  
 saw: 200506B

Direction: After crossing Klamath  
 Marsh on Silver We Hwy turn right  
 onto R5 Rd 49. Follow Rd 49 for ~6.5  
 miles and look for Rd 4582 on right.  
 Turn right onto 4582 and follow for  
 2.9 miles to 4-way intersection, turn  
 left (blue/white Poppo) and follow for ~2 miles,  
 along look for and follow yellow timber sale signs.  
 After ~2 miles look for Rd 497 on your  
 right. Follow 497 for ~10th of mile to the  
 river on your left. Look for small turnout  
 camping area

WM-7

04/14/64

Transect Selection  
 Pool Unit #4 = 130' long  
 Run Unit #9 = 200' long

Pool Unit Random #s  
 4, 2, 8  
 130 X 2 = 26'  
 130 X 4 = 52'  
 130 X 8 = 104'

Run Unit Random #s  
 1, 4, 8  
 200 X 1 = 20  
 200 X 4 = 80  
 200 X 8 = 160

WM-7 Pool Unit Map 04/13/04

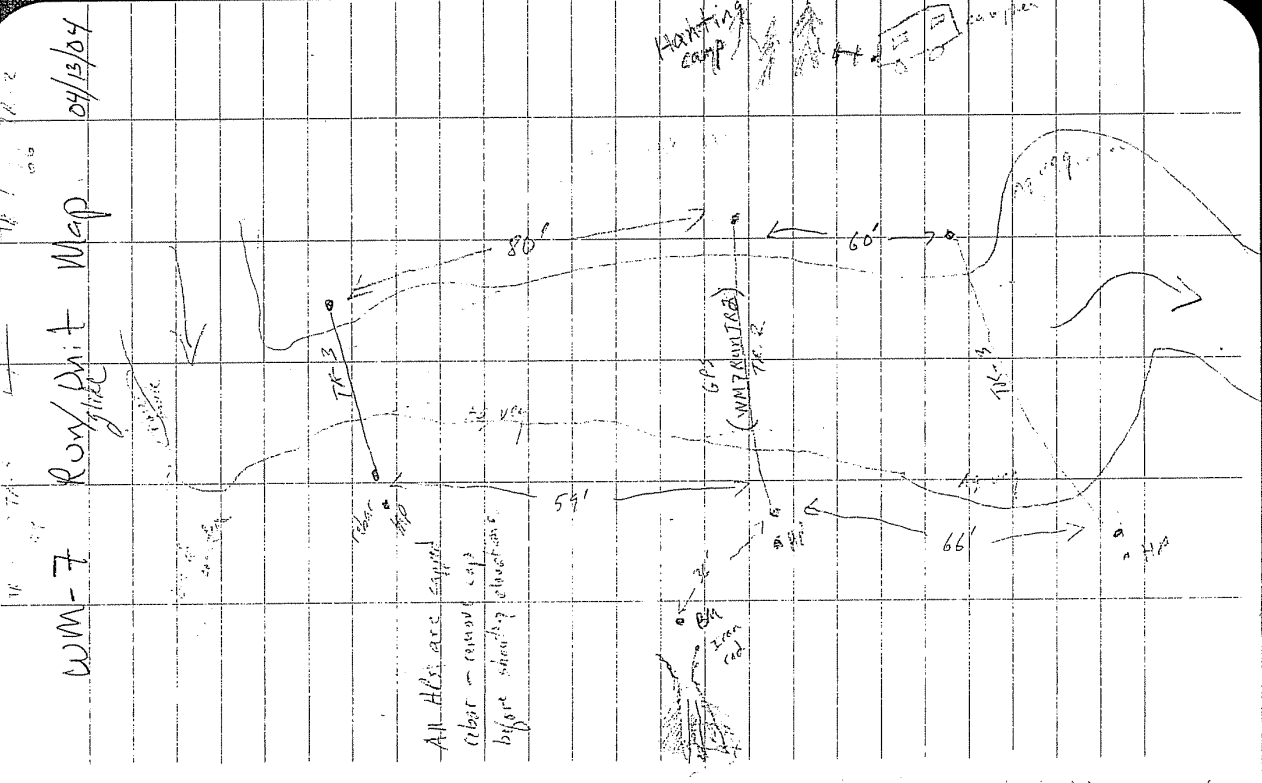


WM-7 Pool Unit 04/13/04

STA	BS	HI	Loop FS	WS E Elevation
BM	3.65	103.65		100.00
TR-1			5.30	98.35
TR-2			5.13	98.52
TR-3			4.64	99.01
TR-3 (TP)	4.83			99.01
TR-2		103.84	5.32	98.52
TR-1			5.49	98.35
BM		103.84	3.84	100.00
TR-1			7.70	96.14
TR-2			7.67	96.17
TR-3			7.65	96.19
HC			7.71	69.13

\* Set channel and shot only on left bank #

WWM-7	Run/Glide	Unit
Level	Loop & WSEs	Elevn
HT	FS	100.00
STA BS		
BM 4.28		
TR-1	4.94	99.34
TR-2	5.43	98.85
TR-3	4.97	99.31
IP		
TR-3	5.06	99.31
TR-2	5.52	98.85
TR-1	5.03	99.34
BM	4.37	100.00
TR-1	5.11	96.36
TR-2	8.10	96.27
TR-3	8.07	96.30



WWM-7 Discharge 04/13/04

STA Depth Vel. Notes

14.0	0.0		edge
16.0	0.6	0.0	grass/vel. break
18.0	2.1	0.66	
19.5	2.5	0.75/0.80	
21.0	2.5	0.09/0.85	
23.0	2.2	1.14	
25.0	2.0	1.09	
27.0	2.0	1.20	
29.0	1.8	1.27	
31.5	1.6	1.40	
34.0	1.6	1.22	
36.5	1.6	1.32	
39.0	1.50	1.27	
41.5	1.6	1.39	
44.0	1.5	1.30	
46.5	1.6	1.17	
49.0	1.7	1.06	
51.5	1.5	0.86	
54.0	1.5	0.63	
56.5	1.5	0.55	
59.0	1.4	.39	edge grass
60.5	.70	0.0	grass/vel. break
62.0	.10	0.0	"
65.0	.20	0.0	"

WWM-7 Photo Log 04/13/04

Photo #	Description
#20	Looking w/s from bridge
#19	H/Lt → RT
#18	TR-1 Lt → RT
17	TR-2 "
16	TR-3 "
15	Looking w/s from above
14	BM Tree
13	Looking w/s from below unit
12	" across TR-1 Rt → Lt
11	" TR-2 "
10	" TR-3 "
9	" d/s from above unit
8	" @ BM & tree (behind road)

wm-7 Discharge Continue

STA	Depth	Vel.	Notes
67.0	.40	0.0	grass/vel. break
69.0	.20	0.0	"
71.0	0.0	0.0	edge

WM-7



*"Rite in the Rain"*

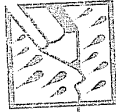
ALL-WEATHER

LEVEL BOOK

No. 310 F

6/26/04





"Rite in the Rain"  
ALL-WEATHER WRITING PAPER

ALL-WEATHER  
LEVEL BOOK

Name Mike Gagner  
 Address R2 Resource Consultants  
15250 NE 95 st  
Redmond, WA 98052  
 Phone 425/556-1288  
 Project 1418.01 PHABSIM site

This book is printed on "Rite in the Rain" All-Weather Writing Paper - A unique paper created to shed water and enhance the written image. It is widely used throughout the world for recording critical field data in all kinds of weather. For best results, use a pencil or an all-weather pen.

Specifications for this book:

Page Pattern		Cover Options	
Left Page	Right Page	Polydura Cover	Fabricoid Cover
Columnar	Columnar	Item No. 310	Item No. 310F

CONTENTS

DATE

REFERENCE

PAGE

6/26/04

WM-7

Crew: Glen Anderson  
Marcus APPY

Sunny Warm (High 80°F)

Equip: Nikon AP-7 Level  
Prop. 3A  
Swoffer 3602

	IN	OUT
Time	9:30am	5:00pm
SG	6.0	6.0

Lump HC @ 61.55

6/26/04

WM-7

Level Loop Pool

STA	BS	HI	FS	ELEV	Notes
BM	4.21	104.21		100.00	
TR-1			5.85	98.36	
TR-2			5.69	98.52	
TR-3			5.20	99.01	
(TP)					
TR-3	5.33	104.34			
4.13					
TR-2			5.82	98.52	
TR-1			5.99	98.35	
BM			4.34	100.00	✓
100' w/s			8.81	95.53	WSE
60' o/s			8.87	95.47	WSE

(measured on L. Bank)

(measured @ center)

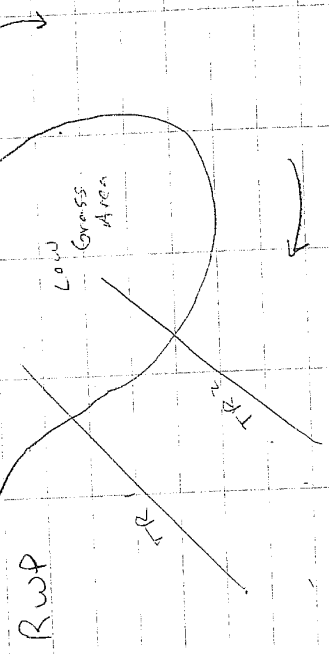
WM-7	6/26/04	TR 1	Bank	Survey
STA	BS	HI	FS	Sub %
54.85	104.34	6.29	1	100
51	6.34	6.54	1	100
50	8.44	8.79	3/2	80
49	8.86	8.85	2/3	80
48.4	8.85	8.80	1	100
—	8.46	7.54	1	100
9.4	6.95	—	1	100
6.0	—	—	—	—
1.0	—	—	—	—
-9.0	—	—	—	—

54.85 LWP

Notes  
LWP ON TOP of grass bank

TOE of bank

WSE - L  
WSE - R



WM-7 6/26/04

POOL TRI Discharge

STA	D	V	Sub p/s	% cover	Notes RWE
10.1	0	0	2/4	60	
11	0.1	0	2/4	60	2
12	0.8	0	2/4	60	2
14	0.50	0	3/2	60	4
15	0.10	0	3/2	70	4
18	0.20	0.50	3/2	60	4
20	0.28	0.87	3/2	60	4
22	0.47	1.10	3/2	60	4
24	0.80	1.19	3/2	70	
26	1.25	1.06	3/2	70	
28	1.40	1.07	3/2	80	
30	1.50	1.02	3/2	80	
32	1.70	0.95	3/2	80	
34	1.75	0.97	3/2	80	
36	2.20	0.95	3/2	80*	
38	3.05	1.06	3/2	80*	
40	3.30	1.01	3/2	80*	
37	2.65	1.05	3/2	80	
41	3.35	0.95	2/2	80*	
42.3	2.8	1.01	3/2	80*	
44	2.4	0.91	2/3	70	
45	1.6	0.37	2/3	70	

\* Substrate estimated - could not see due to turbidity - felt the same as @ 36'

Pool TRI (cont.) 6/26/04

STA	D	V	Sub p/s	% cover	Notes
46	0.9	-0.04	4/3	70	4
47	0.3	-0.19	2/3	60	4
47.9	0	0	2/3	60	4 LWE

69.00 LWP

LWP

EDGE OF BANK - UNDERCUT

WSE-L

WSE-R

RWP

WM-7	TR 2	Bank Survey	Sub. %
STA	BS	FS	FLV
69.0	104.34	6.24	1 100
61.0		6.54	1 100
58.6		7.43	1 100
58.3			
-		8.85	-
-		8.84	-
31.4		8.77	1/2 60
26.6		8.72	1 100
26		8.08	1 100
13		8.34	1/2 70
4		7.89	1 100
1.0		7.55	1 100
-9.0		6.62	1 100



WM-7 6/26/04

Pool TR 3 Bank Survey

STA	BS	HI	FS	ELEV	Sub. %	Notes
1.0	104.34		7.56		100	RWP
-10			6.85		100	
3.5			7.97		100	
13			8.37		100	
29.0			8.47		100	Top of bank
-			8.82		-	WSE - R
-			8.82		-	WSE - L
66.9			7.62		1/2 60	
68.0			7.62		2/1 70	
68.1			6.36		100	
76.0			6.03		100	LWP

WM-7 6/26/07

Pool TR 3 Discharge

STA	D	V	$\frac{D}{V}$	Sub $\frac{D}{V}$ %	Cover	Notes	STA'	D	V	Sub $\frac{D}{V}$ %	Cover	Notes
29.1	0.30	0		2/3 60	2	Edge of Bank	62.5	3.6	1.01	2/3 70*	4	
30	0.50	0.01		2/3 60	2		63.5	2.6	0.72	2/3 70*	4	
32	0.80	0.20		2/4 70	4		64.5	2.15	0.27	2/3 70	4	
33	0.45	0.15		2/4 60	4		65.5	1.4	-0.06	2/3 70	4	
34.5	0.50	0.06		2/4 80	4		66.6	0.25	0	2/3 70	2	
36	0.60	0.22		3/2 60		* 30°						
37.5	0.60	0.50		3/2 80		"						
39	0.65	0.67		3/2 80		"						
40.5	0.80	0.78		3/2 90		"						
42	0.95	0.89		3/2 90		"						
43.5	1.10	0.94		3/2 90		"						
45	1.20	1.09		3/2 90		"						
46.5	1.30	1.19		3/2 90		"						
48	1.45	1.13		3/2 90		"						
49.5	1.55	1.27		3/2 90		"						
51	1.70	1.22		3/2 90		"						
52.5	1.80	1.26		3/2 90		"						
54	1.80	1.16		3/2 70		"						
55	2.00	1.19		3/2 70		"						
56.5	2.70	1.32		3/2 70*		"						
58	3.50	1.15		3/2 70*		"						
59.5	4.10	1.12		3/2 70*		"						
61	4.25	1.07		2/3 70*		* 10°						

undercut 0.4'

\* Estimated



get last # from Long cic 6/26/04

6/26/04

# Photo LOG

Roll # 2 Adventix

#	Pool	u/s	L-R
1	Pool	HC	L-R
2	"	TR1	L-R
3	"	TR2	L-R
4	"	TR2	R-L
5	"	TR1	R-L

Last shot " Roll # 3 Adventix

1	Pool	TR3	L-R
2	Pool	D/S	
3	"	TR3	R-L
4	RUN	TR1	L-R
5	RUN	WS	
6		TR2	L-R
7		TR3	L-R
8	RUN	D/S	
9	RUN	TR3	R-L
10		TR2	R-L
11		TR1	R-L

WM-7 6/26/04

Pool HC Bank Survey

STA	BS	HI	FS	ELEV	SUB P/S	%	Notes
61.55		104.34	6.38		1	100	LWP
57.5			6.75		1	80	
57.0			8.38		2/3	80	
-			8.86		-	-	WSE-L
-			8.86		-	-	WSE-R
8.4			8.47				
4.5			8.34				
1.0			7.41				RWP
-4.0			6.65				

Grass

STA	Notes	D	STA	D
56.3	LWE	0.75	33	0.75
55.5	0.2	0.8	31	0.8
55	0.7	0.8	29	0.8
53	1.1	0.95	27	0.95
51	1.35	1.10	25	1.10
49	1.25	1.2	23	1.2
47	1.1	1.2	21	1.2
45	1.25	1.1	19	1.1
43	1.20	0.95	17	0.95
41	1.30	0.8	15	0.8
39	1.00	0.85	13	0.85
37	0.8	1.35	11	1.35
35	0.75	1.65	9	1.65
		1.65	8.8	1.65

Pool HC

underscut bank  
1.1'

R-Bank

WM-7 6/26/04

RUN LEVEL LOOP  
 STA BS HI FS ELEV NOTES  
 BM 3.40 103.40 100.00

TR1 4.06 99.34  
 TR2 4.56 98.84  
 TR3 4.09 99.31  
 TR3 4.27 103.58  
 TR2 4.74 98.84  
 TR1 4.24 99.34  
 BM 3.58 100.00 ✓

WSE 75' U/S (measured in stream)  
 WSE 75' D/S (measured in stream)

WM-7 6/26/04

RUN TR1 - Bank Survey  
 HI = 103.58'

STA	BS	FS	ELEV	Sub. %	Notes
1.0	4.71			100	RWP
17.5	4.39			100	Top of step
17.6	5.98			100	Toe of step
2.0	7.59			1/2 60	
2.1	7.97			1/2 60	
-	7.97			-	WSE-R
-	7.97			-	WSE-L
63.4	7.10			100	top of bank
65	6.68			100	
68.0	6.65			100	LWP

6/26/04 WM-7  
 RUN TR 1 Discharge

STA	D	V	W/S	%	Cover	Notes
						EDGE OF BANK
63.3	1.30	0	2/3	80	2	
62.5	2.10	0.03	2/3	90	2	
61.5	2.10	0.26	2/3	90	4	
61.2	2.85	0.32	2/3	90	4	
60.5	3.70	0.54	2/3	60	4	
59	3.60	0.79	2/3	60	4	
58	3.35	0.74	3/2	70	4	
56	3.10	1.23	3/2	70	4	
54.5	2.95	1.38	3/2	70	4	
53	2.60	1.40	3/2	70	4	
51.5	2.27	1.24	3/2	80	4	
50	1.90	1.20	3/2	80	4	
48	1.40	1.18	3/2	80	4	
46	1.05	1.03	3/2	80	4	
44	0.80	0.98	3/2	80	4	
42	0.70	0.46	3/2	80	4	
40	0.85	0.59	3/4	80	4	
38	0.90	0.46	3/4	90	4	
36	0.90	0.34	3/2	80	4	
34	0.80	0.20	2/3	70	4	
32	0.55	0.01	2/3	60	1	
30	0.60	0.01	9/2	70	1	
28	0.50	0	9/2	80	3	
26	0.30	0	9/2	80	3	

UNDERCUT BANK 0.5'  
 organic soft silt substrate

" "

STA  
 24  
 22  
 21.9

D  
 0.1  
 0.05  
 0

V  
 0  
 0  
 0

W/S  
 9/2 80  
 2/9 60  
 2/9 60

%  
 80  
 60  
 60

Cover  
 2  
 2  
 -

Notes  
 RWI

6/26/04  
Bank Survey

WM-7  
TR 2

RUN

STA	BS	FS	HI = 103.58'	ELEV	Sub p/s %	Notes
78.5		5.52			1 100	LWP
75		5.68			1 100	
73.5		6.34			1 100	
72.5		7.51			1 100	
-		7.94			-	WSE-L
-		7.95			-	WSE-R
<del>74</del> 24		7.90			1/2 60	
16.5		7.59			1 100	
13.4		6.88			1 100	
8.4		5.60			1 100	
1.0		5.31			1 100	PWP

WM-7 6/26/04  
 RUN TR 2 Discharge

STA	D	V	1/5 %	Cover	Notes
25.3	0	0	1/2 60	-	RWE
26	0.25	0	2/9 60	3	tall grass
28	0.50	0	1/2 70	3	"
30	0.40	0.10	1/2 80	3	"
32	0.75	0.30	2/9 80	4	
34	0.85	0.34	2/9 60	4	
36	0.65	0.28	1/2 60	4	
38	0.55	0.64	3/2 60	4	
40	0.60	0.99	3/2 60	4	
42	0.67	1.01	3/2 70	4	
44	0.60	1.19	2/3 60	4	
46	0.70	1.18	3/2 60	4	
48	0.75	1.24	3/2 70	4	
50.5	0.80	1.27	3/2 80	4	
53	1.05	1.26	3/2 80	4	
55.5	1.25	1.35	3/2 80	4	
58	1.40	1.34	3/2 80	4	
60.5	1.50	1.31	3/2 80	4	
63	1.60	1.22	3/2 80	4	
65.5	1.80	1.26	3/2 60	4	
67	2.05	0.85	2/3 60	4	
69	2.55	1.00	0.84 2/3 60	4	
70	2.60	0.78	0.67 2/3 60	2	

STA	D	V	1/5 %	Cover	Notes
71	2.10	0.10	1/2 70	2	EDGE OF CHANNEL
71.7	1.80	0.10	1/2 70	2	undercut 0.7'

6/26/04

Bank Survey

WM-7

TR 3

HI = 103.58'

RUN

STA	BS	FS	ELEV	Sub. %	Notes
1.0	5.03			100	RWP
5.0	5.78			100	
7.6	6.20			100	
13	6.73			100	
14.5	7.01			100	
18	7.39			100	
19.4	7.57			100	
-	7.92			-	TOP OF BANK
-	7.93			-	WSE-R
41.4	7.92			2/9 90	WSE-L
47.9	7.82			100	
48	7.40			100	
55	7.57			100	
59.8	7.13			100	
61.9	6.62			100	LWP
94	6.85			100	
114	5.14			100	

BANK

6/26/04

Discharge

WM-7

RUN TR3

STA	D	V	Sub	1/s %	Cover	Notes
41.2	⊕	⊖	3/4	90	-	LWE
40	0.55	0.35	3/2	60	4	
39	0.75	0.58	3/2	60	4	
38	0.80	0.73	2/3	60	4	
37	1.00	0.85	2/3	60	4	
36	1.20	0.97	2/3	60	4	
35	1.45	0.89	3/2	60	4	
34	1.75	0.92	3/2	60	4	
33	2.10	0.91	3/2	60	4	
32	2.60	0.89	3/2	60	4	
31	3.10	0.78	3/2	60	4	
30	3.60	0.79	3/2	60	4	
29	4.00	1.00	3/2	60	4	
28	4.50*	1.12	3/2	60	4	
27	4.70	1.09	3/2	60	4	
26	4.70	1.07	3/2	60	4	
25	4.80	0.99	3/2	60	4	
24	5.00	0.73	3/2	60	4	
23	4.30	0.36	2/3	80	2	
22	5.00	0.16	2/3	80	2	
21	5.00	0.18	2/3	80	2	
19.7	1.20	⊖	1/2	80	2	EDGE OF BANK UNDERCUT 0.3'

\* ESTIMATED - over top set depth & turbidity



WM-7



*"Rite in the Rain"*  
ALL-WEATHER  
LEVEL BOOK  
No. 310 F

8/20/04

WM-7 8/20/04

Upper Williamson to Rock Ford

TIME	IN	OUT
9:30	3.0	3.15
3.0	3.0	3.0

crew: Marcus Appy  
Glen Anderson

Sunny, clear, hot (~90° High)

Equip: Swaffer 4099  
Prop 1A  
cal 186

Photo Log (disposable camera #1)

#	Pool	TR1	L-R
11	Pool	TR1	L-R
10	"	TR2	L-R
8	"	TR3	L-R
7	RUN	TR1	L-R
6		TR2	L-R
5		TR3	L-R

WM-7 8/20/04

Pool Level Loop

STA	BS	HI	FS	ELEV
BM	3.56	103.56		100.00 ✓
TR1-HP			5.21	98.35 ✓
TR2-HP			5.04	98.52 ✓
TR3-HP	4.61	103.61	4.56	99.00 ✓
TR2-HP			5.09	98.52 ✓
TR1-HP			5.26	98.35 ✓
BM			3.61	100.00 ✓ OK

~~TR1-HP~~  
~~TR2-HP~~  
~~TR3-HP~~  
~~BM~~

HG	103.61	8.23	95.38	LWSE
TR1		8.22	95.39	RWSE
		8.21	95.40	LWSE
		8.21	95.40	RWSE
TR2		8.21	95.40	LWSE
		8.21	95.40	RWSE
TR3		8.20	95.41	LWSE
		8.20	95.41	RWSE

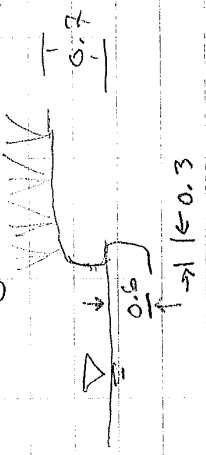
WM-7 8/20/04

Pool TR1  
Discharge  
RWP = 1.0'  
RBE (ucb)

STA	D	TR1	Y	* Added Cell	Out	* Added Cell
12.4	0.6	0	0			
14	0.4	0	0			
14.8	0	0	0	*		
15	-0.15	0	0			
17.1	0	0	0	*		
18	0.1	0	0			
20	0.21	0.57				
22	0.48	0.85				
24	1.00	0.96				
26	1.40	0.98				
28	1.30	1.02				
30	1.32	1.01				
32	1.50	1.02				
34	1.70	0.93				
36	1.92	0.84				
37	2.08	0.78				
38	2.43	0.80				
40	3.05	$\frac{0.94}{0.83}$				
41	3.30	$\frac{0.98}{1.05}$				
42.3	2.75	$\frac{0.83}{0.95}$				
44	2.36	0.70				
45	1.85	0.23				
46	0.90	0				
47	0.25	0				
47.7	0	0				
54.8						LWR

WM-7 8/20/04

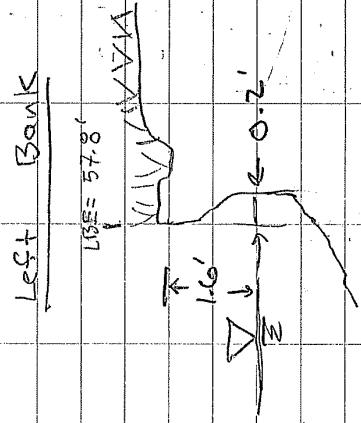
TR1  
Right Bank  
Note: not visible  
(to higher flows.)



Note: Unstable, sloughing left bank, and mobile/shifting bed, so same difference in bed profile to be expected.

STA	D	V	TR 2	Discharge	8/20/04
31.3	0.17	0		RMP=1.0'	
33	0.60	0.20		RBE (Bank 0.2' high)	
35	0.92	0.35		Δ 30°	
36	1.02	0.34		Δ 30°	
37	1.30	0.45		Δ 30°	
39	1.47	0.75		Δ 30°	
41	1.58	0.84		Δ 30°	
42	1.75	0.89		Δ 30°	
43	1.75	0.93		Δ 30°	
44	1.90	1.03		Δ 30°	
45	2.03	0.88		Δ 30°	
46	2.25	0.80		Δ 20°	
47	2.40	0.91		Δ 10°	
48	2.68	0.84			
49	3.20	0.85			
50	3.70	0.83			
51	3.92	0.82			
52	4.10	0.97			
53	4.35	1.08			
54	4.45	0.78			
55	4.35	0.57			
56	4.20	0.00		* Positive vel. - Change 4/24/04 to pos.	
57	3.41	-0.09			BA
57.8	0.59	0		LBE (UCB)	

WM-7  
Pool TR 2  
8/20/04  
Right Bank  
not undercut





WM-7

8/20/04

Pool tie-in to Run

STA	BS	HI	FS	ELEV
BM-Run	5.37	105.37		100.00
BM-Run	5.25		100.12	

RUN LELEL LOOP

BM-Run	5.25	105.25		100.00	
TR1-HP		5.91		99.34	
TR2-HP		6.42		98.83	
TR3-HP	4.66	103.96	5.95	99.30	
TR2-HP		5.13		98.83	✓
TR1-HP		4.62		99.34	✓
BM		3.96		105.00	✓ O.K.

TR3	103.96	8.44		95.52	RWSE
		8.43		95.53	LWSE

TR2		8.44		95.52	RWSE
		8.45		95.51	LWSE

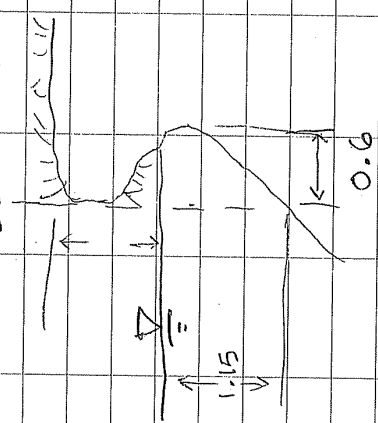
TR1		8.45		95.51	RWSE
		8.46		95.50	LWSE

STA	D	V	TR1	Discharge	Comments
1.0	-	-			RWP
24.9	0	0			RWE
26	0.20	0			
28	0.62	0			
30	0.50	0			
32	0.43	0			
34	0.70	0.05			
36	0.82	0.07			
38	0.83	0.38			
40	0.73	0.52			
42	0.60	0.32			
44	0.70	0.55			
46	0.92	0.77			
48	1.34	0.89			
50	2.13	1.05			
51.5	2.38	1.10			
53	2.58	1.22	0.86		
54.5	2.85	1.14	1.06		
56	3.00	1.01	1.18		
58	3.10	0.71	1.07		
59	3.60	0.51	0.46		
60.5	3.50	0.50	0.07		
61.2	2.13	0.64			
61.5	2.10	0.58			
62.5	1.63	0.04			

WM-7  
RUN TR1 8/20/04

Left Bank

LBE = 63.3



STA	D	V	Comments
63.3	1.15	0	(LBE (UCB))
63.65	0	0	LWE

WM-7	8/20/04	TR2	Comments
STA	D	V	RWF
25.8	0	0	
26	0.15	0	
28	0.30	0	
30	0.30	0	
32	0.70	0.24	
34	0.77	0.01	
36	0.52	0	
38	0.40	0.63	
40	0.52	0.76	
42	0.60	0.88	
44	0.55	0.82	
46	0.60	0.95	
48	0.60	0.96	
50.5	0.73	0.99	
53	1.00	1.13	
55.5	1.25	1.07	
58	1.48	1.16	
60.5	1.55	1.08	
63	1.78	1.12	
65.5	1.80	1.10	
67	2.00	0.75	
69	2.48	0.86	
70	2.70	<del>0.69</del> 0.54	
71	2.00	0.01	
72	1.35	0	

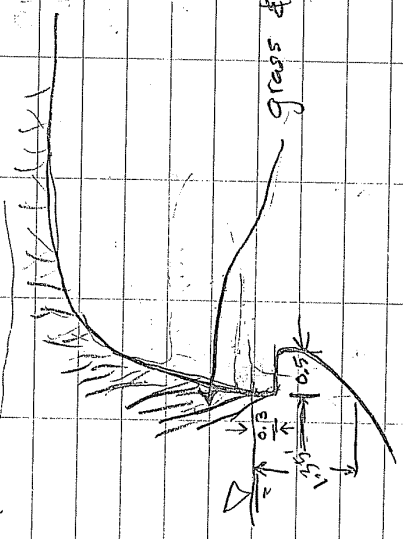
LBE (UCB)

WM-7  
RUN TR 2

8/20/04

TR2

Left Bank



grass & reeds



WM-7  
 RUN TR3 (discharge)  
 8/20/04

STA D V Comments

STA	D	V	Comments
1.0	—	—	RWP
19.6	1.40	0	RBE (VCB)
21	5.05	0.17	
22	5.00	0.27	
23	4.43	0.42	
24	4.60	0.41	
25	4.81	0.85	
26	4.75	0.93	
27	4.45	1.02	
28	4.00	0.99	
29	3.60	0.87	
30	3.05	0.98	
31	2.75	0.98	
32	2.15	1.05	
33	1.80	1.02	
34	1.50	0.96	
35	1.23	0.83	
36	1.05	0.87	
37	1.00	0.65	
38	0.77	0.28	
39	0.65	0.05	
40	0.37	0	
41.2	0.18	0	
41.3	0	0	LWE

WM-7  
 RUN TR3 8/20/04

Right Bank

