

12-4-2009

Ex. 277-US-439

Unknown

Follow this and additional works at: <https://digitalcommons.law.uidaho.edu/all>

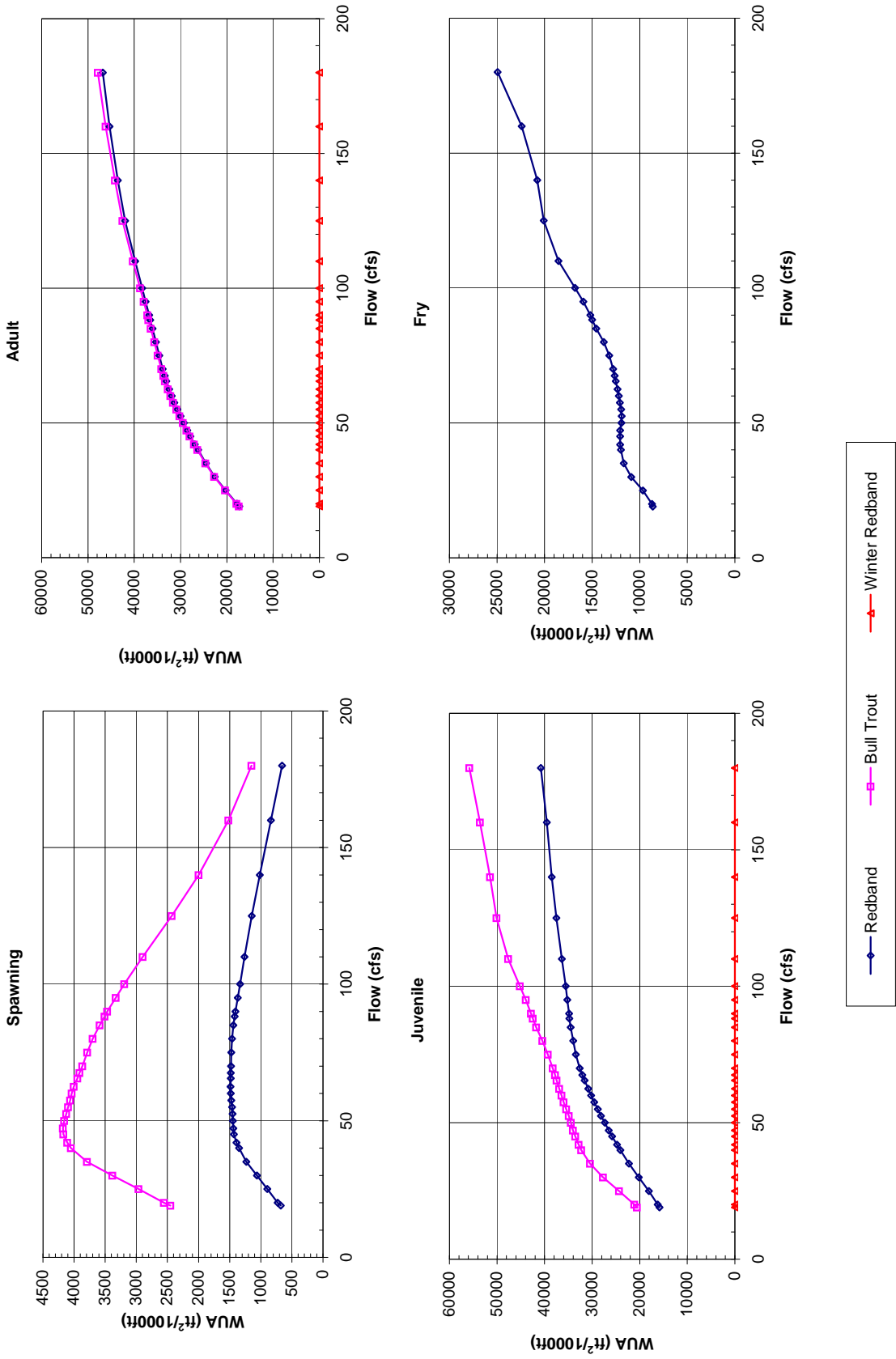
---

### Recommended Citation

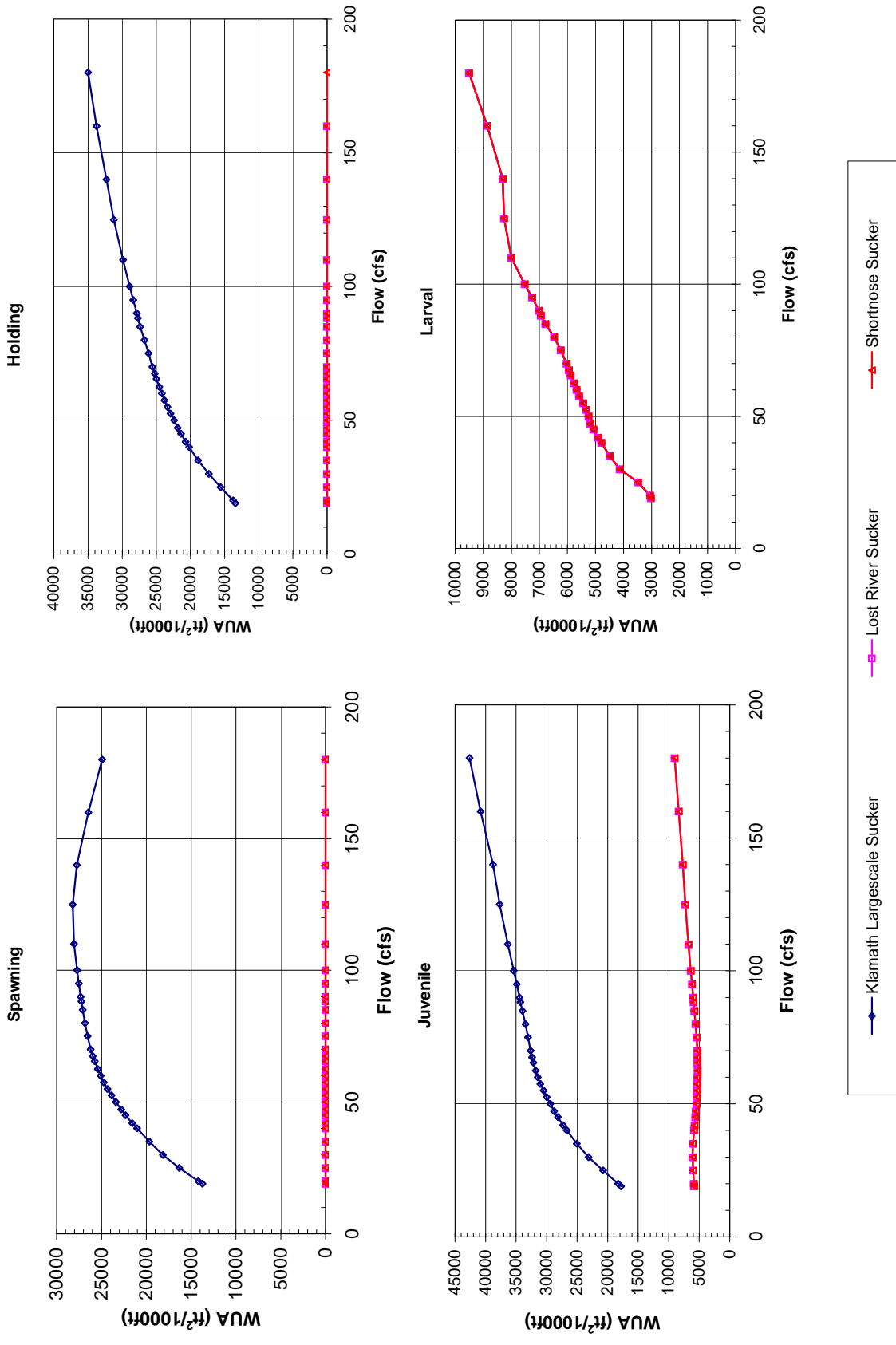
Unknown, "Ex. 277-US-439" (2009). *Hedden-Nicely Collection, All*. 361.  
<https://digitalcommons.law.uidaho.edu/all/361>

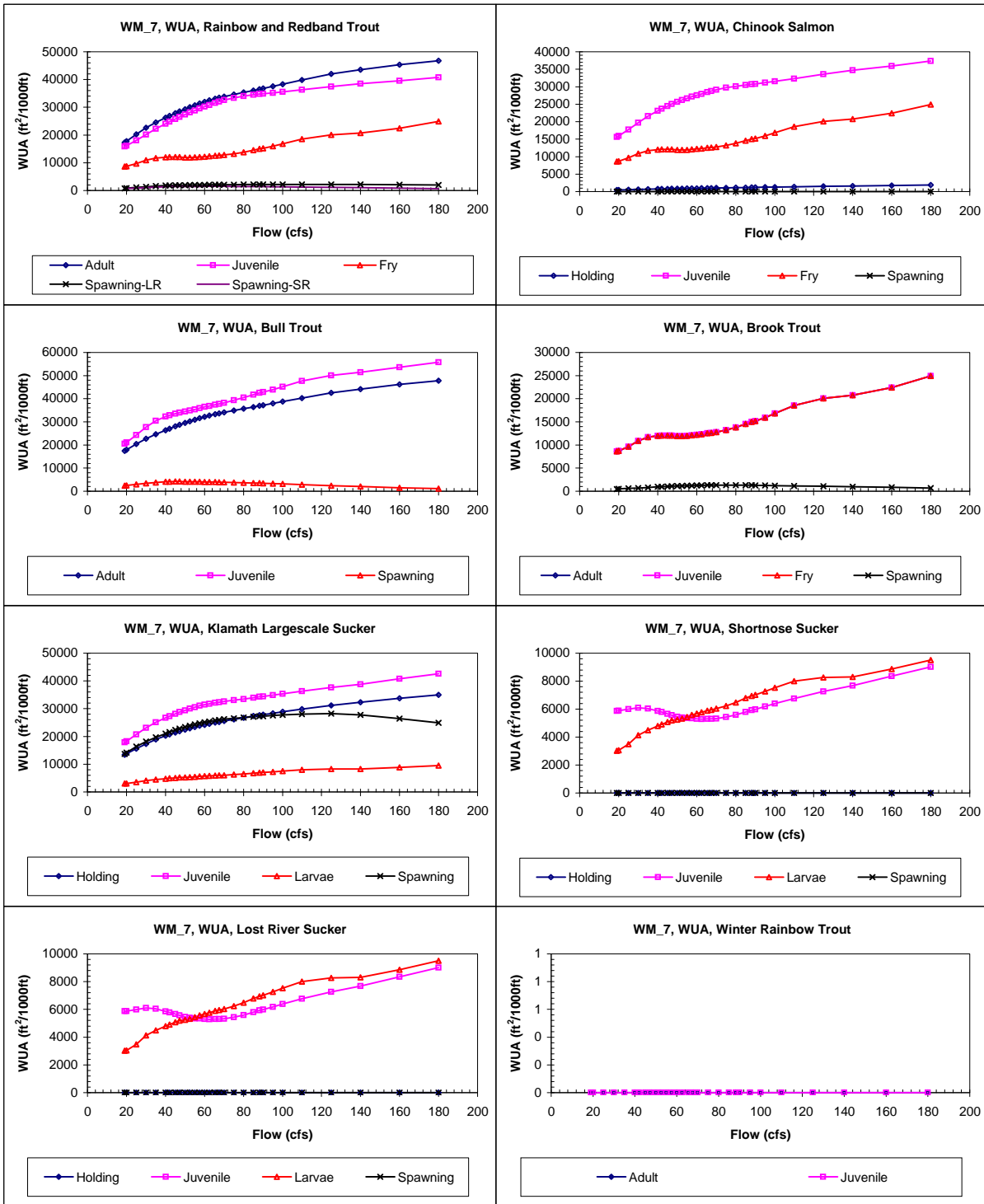
This Expert Report is brought to you for free and open access by the Hedden-Nicely at Digital Commons @ UIdaho Law. It has been accepted for inclusion in Hedden-Nicely Collection, All by an authorized administrator of Digital Commons @ UIdaho Law. For more information, please contact [annablaine@uidaho.edu](mailto:annablaine@uidaho.edu).

**Site WM 7**  
**Priority Species Habitat - Flow Curves**



# Site WM 7 Priority Species Habitat - Flow Curves





Reach 631 Williamson River, Site 7, Composite WUA

	WUA (ft <sup>2</sup> /1000ft)				
	Q	Adult	Juvenile	Spawning - Spawning -	
	(cfs)			Fry	Large River
19	17313	15836	8620	773	677
20	17771	16204	8703	843	729
25	20249	18103	9662	1111	895
30	22618	20179	10889	1360	1060
35	24497	22258	11682	1592	1231
40	26217	24085	11982	1759	1347
42	26901	24777	12048	1817	1389
45	27848	25791	12057	1880	1433
47.2	28521	26517	12047	1903	1442
50	29286	27342	11914	1926	1448
52.5	30013	28122	11906	1949	1455
55	30673	28827	11958	1971	1462
57.5	31357	29547	12095	1995	1472
60	31929	30201	12198	2024	1484
62.5	32466	30828	12326	2044	1488
65.5	33062	31578	12526	2063	1484
67.5	33423	32054	12632	2074	1482
70	33841	32608	12789	2090	1477
75	34605	33407	13211	2122	1472
80	35319	33994	13779	2151	1461
85	36061	34503	14558	2176	1441
88.2	36535	34767	15006	2186	1420
90	36791	34872	15191	2190	1407
95	37536	35216	15935	2201	1371
100	38284	35574	16803	2210	1334
110	39805	36345	18541	2223	1261
125	41978	37496	20097	2230	1143
140	43538	38467	20764	2205	1016
160	45340	39514	22403	2130	835
180	46804	40790	24933	2025	657

	WUA (ft <sup>2</sup> /1000ft)				
	Q	Holding	Juvenile	Fry	Spawning
	(cfs)				
19	465	15605	8620	0	
20	477	15954	8703	0	
25	540	17747	9662	0	
30	604	19714	10889	0	
35	668	21574	11682	0	
40	728	23113	11982	0	
42	752	23687	12048	0	
45	786	24486	12057	0	
47.2	811	25052	12047	0	
50	839	25629	11914	0	
52.5	867	26192	11906	0	
55	892	26657	11958	0	
57.5	917	27145	12095	0	
60	941	27548	12198	0	
62.5	965	27938	12326	0	
65.5	994	28434	12526	0	
67.5	1013	28753	12632	0	
70	1037	29155	12789	0	
75	1082	29703	13211	0	
80	1125	30111	13779	0	
85	1169	30504	14558	0	
88.2	1196	30724	15006	0	
90	1210	30814	15191	0	
95	1253	31143	15935	0	
100	1296	31513	16803	0	
110	1380	32321	18541	0	
125	1505	33582	20097	0	
140	1621	34686	20764	0	
160	1768	35907	22403	0	
180	1912	37363	24933	0	

	WUA (ft <sup>2</sup> /1000ft)			
	Q	Adult	Juvenile	Spawning
	(cfs)			
19	17431	20585	2451	
20	17891	21135	2556	
25	20370	24328	2966	
30	22750	27720	3386	
35	24650	30412	3793	
40	26389	32273	4051	
42	27080	32857	4110	
45	28038	33556	4173	
47.2	28719	34002	4178	
50	29496	34443	4158	
52.5	30233	34913	4127	
55	30903	35418	4096	
57.5	31598	35978	4064	
60	32178	36452	4036	
62.5	32723	36896	4004	
65.5	33330	37452	3948	
67.5	33698	37796	3915	
70	34126	38266	3867	
75	34913	39313	3788	
80	35656	40478	3701	
85	36432	41773	3588	
88.2	36926	42494	3510	
90	37191	42842	3467	
95	37966	43965	3332	
100	38745	45213	3194	
110	40309	47651	2895	
125	42536	50101	2431	
140	44175	51457	2000	
160	46177	53592	1519	
180	47837	55820	1148	

	WUA (ft <sup>2</sup> /1000ft)			
	Q	Adult	Juvenile	Spawning
	(cfs)			
19	8620	8620	8620	470
20	8703	8703	8703	496
25	9662	9662	9662	601
30	10889	10889	10889	698
35	11682	11682	11682	818
40	11982	11982	11982	941
42	12048	12048	12048	988
45	12057	12057	12057	1053
47.2	12047	12047	12047	1089
50	11914	11914	11914	1132
52.5	11906	11906	11906	1163
55	11958	11958	11958	1195
57.5	12095	12095	12095	1223
60	12198	12198	12198	1252
62.5	12326	12326	12326	1276
65.5	12526	12526	12526	1296
67.5	12632	12632	12632	1308
70	12789	12789	12789	1315
75	13211	13211	13211	1325
80	13779	13779	13779	1321
85	14558	14558	14558	1304
88.2	15006	15006	15006	1288
90	15191	15191	15191	1279
95	15935	15935	15935	1250
100	16803	16803	16803	1217
110	18541	18541	18541	1156
125	20097	20097	20097	1060
140	20764	20764	20764	971
160	22403	22403	22403	842
180	24933	24933	24933	705

Reach 631 Williamson River, Site 7, Composite WUA

	WUA (ft <sup>2</sup> /1000ft)				
	Q (cfs)	Holding	Juvenile	Larvae	Spawning
Klamath Largescale Sucker	19	13425	17825	3025	13732
	20	13768	18282	3048	14185
	25	15574	20727	3482	16319
	30	17323	23126	4132	18153
	35	18875	25050	4492	19655
	40	20203	26678	4792	21030
	42	20717	27318	4912	21568
	45	21401	28162	5071	22302
	47.2	21887	28757	5193	22806
	50	22407	29386	5243	23376
	52.5	22922	29998	5329	23879
	55	23366	30505	5437	24319
	57.5	23824	31047	5579	24751
	60	24190	31435	5672	25097
	62.5	24545	31784	5766	25422
	65.5	24976	32162	5887	25768
	67.5	25222	32365	5949	25985
	70	25555	32612	6031	26209
	75	26141	33041	6235	26566
	80	26736	33467	6477	26840
85	27369	33976	6783	27083	
88.2	27700	34274	6946	27239	
90	27857	34414	7015	27324	
95	28372	34891	7257	27530	
100	28907	35393	7526	27728	
110	29857	36322	7999	28072	
125	31198	37686	8263	28205	
140	32283	38755	8305	27760	
160	33772	40815	8865	26456	
180	34992	42612	9508	24943	

	WUA (ft <sup>2</sup> /1000ft)				
	Q (cfs)	Holding	Juvenile	Larvae	Spawning
Shorthnose Sucker	19	0	5875	3025	0
	20	0	5879	3048	0
	25	0	5993	3482	0
	30	0	6097	4132	0
	35	0	6040	4492	0
	40	0	5860	4792	0
	42	0	5784	4912	0
	45	0	5656	5071	0
	47.2	0	5568	5193	0
	50	0	5448	5243	0
	52.5	0	5402	5329	0
	55	0	5351	5437	0
	57.5	0	5335	5579	0
	60	0	5306	5672	0
	62.5	0	5290	5766	0
	65.5	0	5300	5887	0
	67.5	0	5300	5949	0
	70	0	5330	6031	0
	75	0	5431	6235	0
	80	0	5590	6477	0
85	0	5802	6783	0	
88.2	0	5928	6946	0	
90	0	5987	7015	0	
95	0	6184	7257	0	
100	0	6397	7526	0	
110	0	6761	7999	0	
125	0	7268	8263	0	
140	0	7688	8305	0	
160	0	8352	8865	0	
180	0	9015	9508	0	

	WUA (ft <sup>2</sup> /1000ft)				
	Q (cfs)	Holding	Juvenile	Larvae	Spawning
Lost River Sucker	19	0	5875	3025	0
	20	0	5879	3048	0
	25	0	5993	3482	0
	30	0	6097	4132	0
	35	0	6040	4492	0
	40	0	5860	4792	0
	42	0	5784	4912	0
	45	0	5656	5071	0
	47.2	0	5568	5193	0
	50	0	5448	5243	0
	52.5	0	5402	5329	0
	55	0	5351	5437	0
	57.5	0	5335	5579	0
	60	0	5306	5672	0
	62.5	0	5290	5766	0
	65.5	0	5300	5887	0
	67.5	0	5300	5949	0
	70	0	5330	6031	0
	75	0	5431	6235	0
	80	0	5590	6477	0
85	0	5802	6783	0	
88.2	0	5928	6946	0	
90	0	5987	7015	0	
95	0	6184	7257	0	
100	0	6397	7526	0	
110	0	6761	7999	0	
125	0	7268	8263	0	
140	0	7688	8305	0	
160	0	8352	8865	0	
180	0	9015	9508	0	

	WUA (ft <sup>2</sup> /1000ft)				
	Q (cfs)	Adult	Juvenile	Fry	Spawning
Winter Rainbow Trout	19	0	0		
	20	0	0		
	25	0	0		
	30	0	0		
	35	0	0		
	40	0	0		
	42	0	0		
	45	0	0		
	47.2	0	0		
	50	0	0		
	52.5	0	0		
	55	0	0		
	57.5	0	0		
	60	0	0		
	62.5	0	0		
	65.5	0	0		
	67.5	0	0		
	70	0	0		
	75	0	0		
	80	0	0		
85	0	0			
88.2	0	0			
90	0	0			
95	0	0			
100	0	0			
110	0	0			
125	0	0			
140	0	0			
160	0	0			
180	0	0			