

12-4-2009

Ex. 277-US-442

Unknown

Follow this and additional works at: <https://digitalcommons.law.uidaho.edu/all>

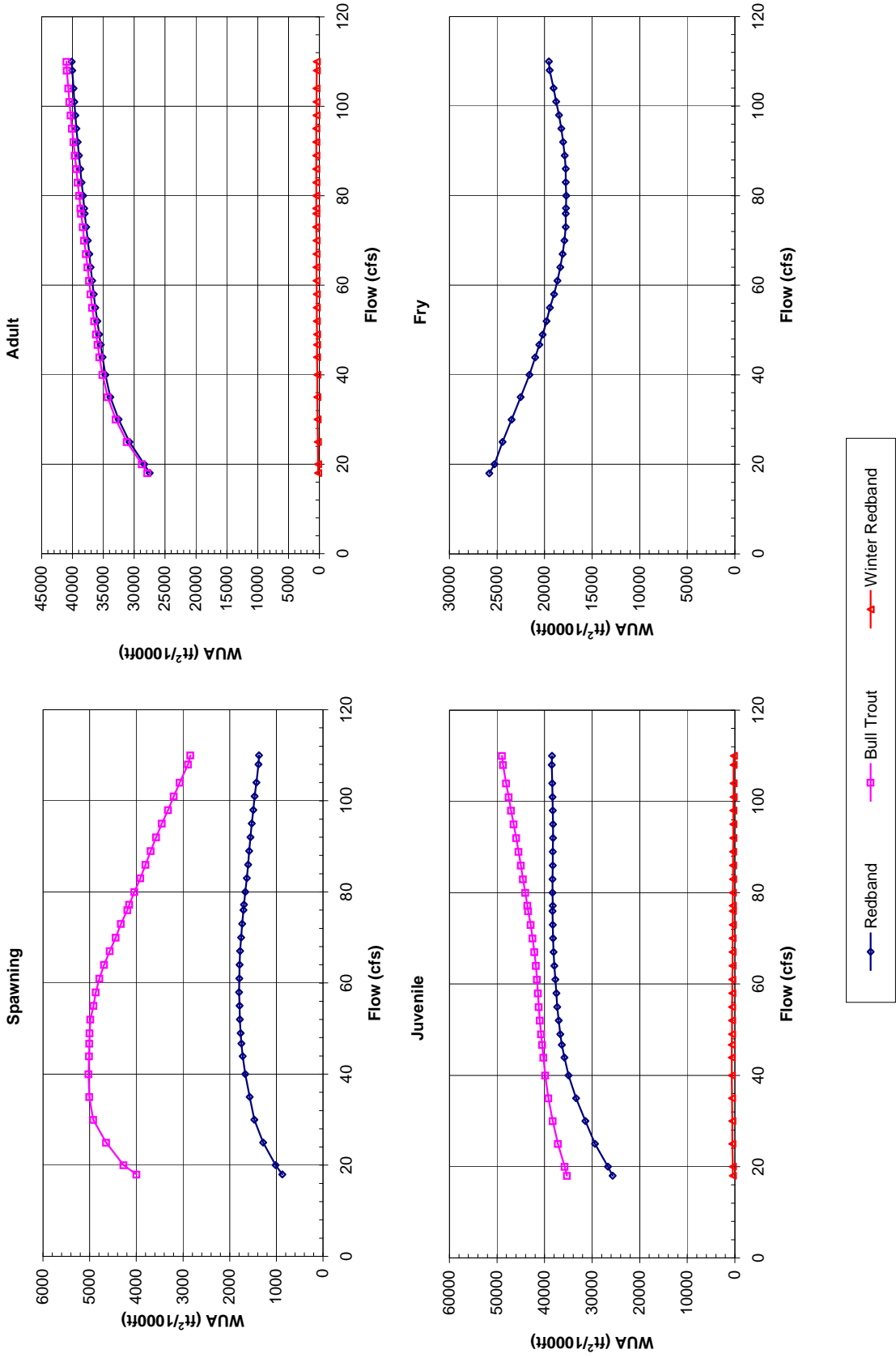
---

### Recommended Citation

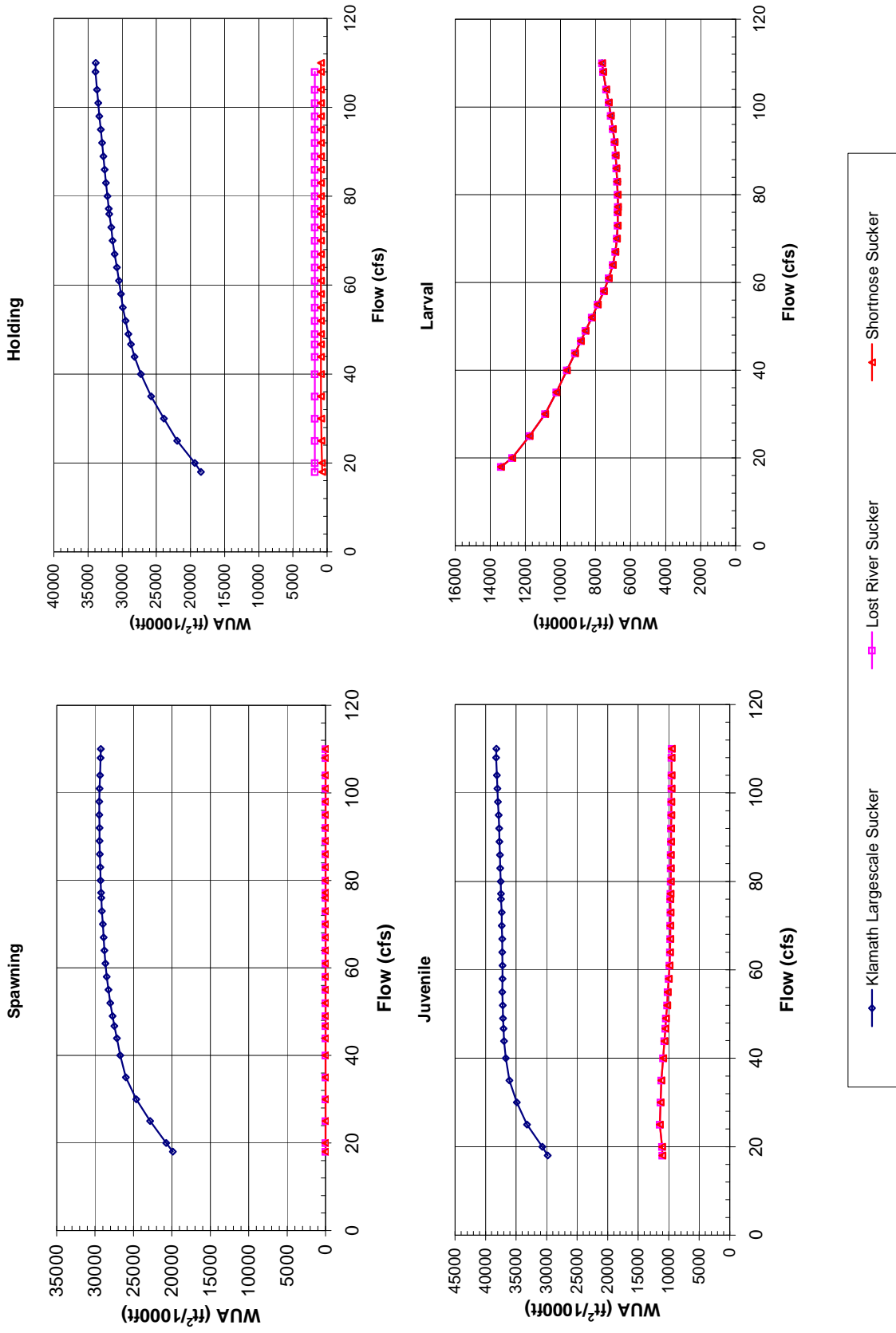
Unknown, "Ex. 277-US-442" (2009). *Hedden-Nicely Collection, All*. 364.  
<https://digitalcommons.law.uidaho.edu/all/364>

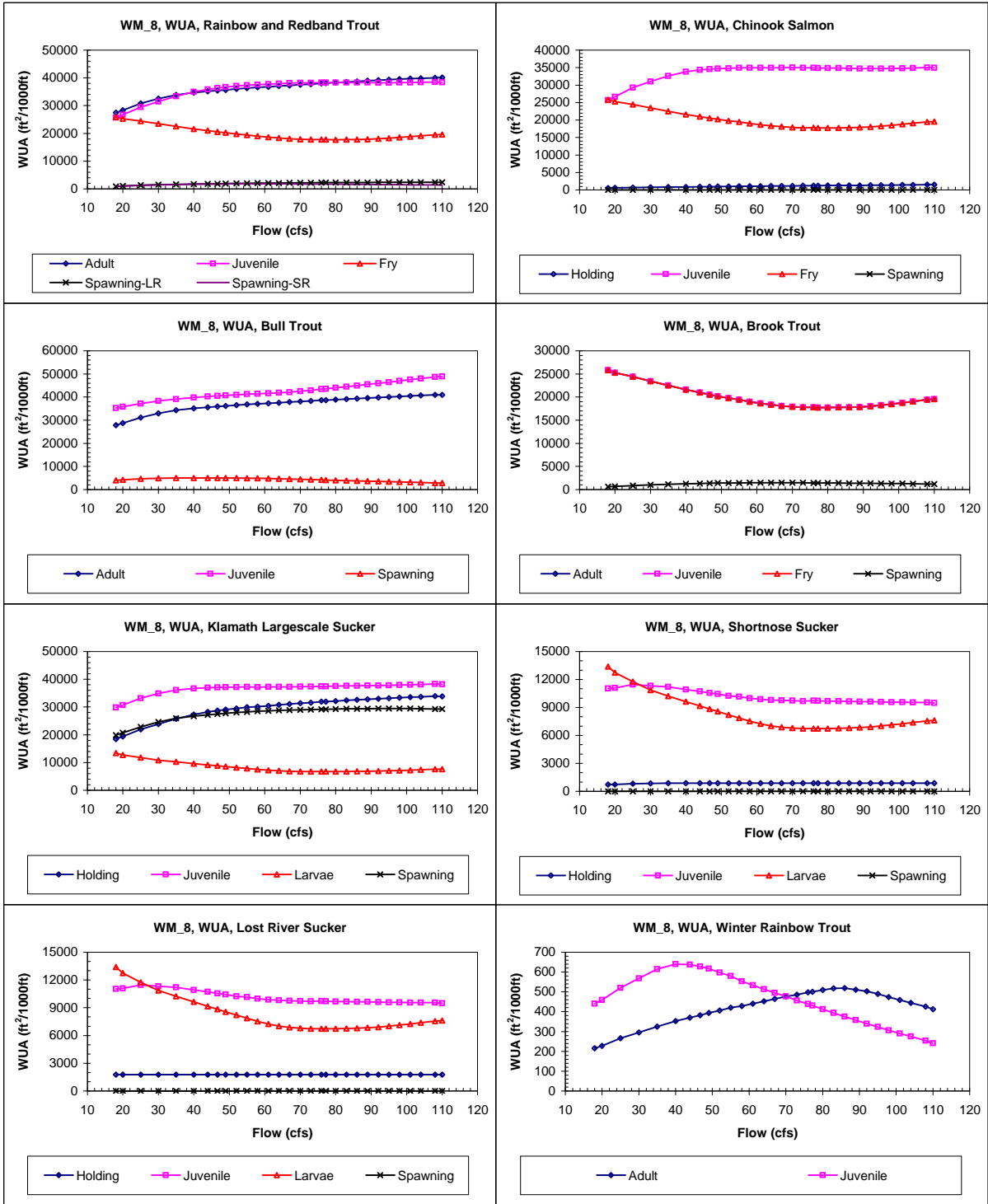
This Expert Report is brought to you for free and open access by the Hedden-Nicely at Digital Commons @ UIdaho Law. It has been accepted for inclusion in Hedden-Nicely Collection, All by an authorized administrator of Digital Commons @ UIdaho Law. For more information, please contact [annablaine@uidaho.edu](mailto:annablaine@uidaho.edu).

# Site WM 8 Priority Species Habitat - Flow Curves



# Site WM 8 Priority Species Habitat - Flow Curves





Reach 632 Williamson River, Site 8, Composite WUA

	WUA (ft <sup>2</sup> /1000ft)				
	Q	Adult	Juvenile	Fry	Spawning - Spawning -
	(cfs)				Large River Small River
18	27498	25683	25816	874	873
20	28362	26681	25252	1020	1017
25	30759	29426	24433	1291	1282
30	32550	31433	23463	1489	1471
35	33858	33373	22526	1598	1568
40	34659	34947	21594	1716	1665
43.9	35146	35843	20986	1797	1718
46.7	35449	36353	20544	1853	1750
49	35690	36695	20209	1894	1764
52	35988	37033	19801	1951	1784
55	36305	37344	19439	2000	1787
58	36567	37537	19010	2052	1797
61	36809	37748	18649	2095	1794
64	37053	37937	18346	2135	1789
67	37289	38100	18103	2166	1775
70	37538	38230	17917	2193	1754
73	37765	38259	17772	2216	1733
76	38027	38323	17779	2239	1701
77.2	38106	38299	17739	2249	1693
80	38303	38307	17724	2269	1667
83	38519	38332	17767	2287	1634
86	38727	38298	17788	2307	1606
89	38939	38268	17873	2327	1581
92	39146	38247	18036	2347	1556
95	39356	38246	18250	2360	1527
98	39557	38267	18497	2370	1495
101	39716	38332	18775	2377	1464
104	39852	38403	19065	2383	1429
108	40055	38511	19462	2390	1383
110	40115	38440	19560	2395	1370

	WUA (ft <sup>2</sup> /1000ft)				
	Q	Holding	Juvenile	Fry	Spawning
	(cfs)				
18	539	25667	25816	0	
20	568	26652	25252	0	
25	655	29257	24433	0	
30	726	31004	23463	0	
35	796	32596	22526	0	
40	859	33776	21594	0	
43.9	905	34352	20986	0	
46.7	935	34595	20544	0	
49	960	34738	20209	0	
52	990	34812	19801	0	
55	1024	34925	19439	0	
58	1050	34907	19010	0	
61	1079	34941	18649	0	
64	1108	34962	18346	0	
67	1137	34981	18103	0	
70	1165	34996	17917	0	
73	1188	34931	17772	0	
76	1216	34931	17779	0	
77.2	1225	34882	17739	0	
80	1247	34843	17724	0	
83	1273	34832	17767	0	
86	1297	34782	17788	0	
89	1321	34731	17873	0	
92	1345	34699	18036	0	
95	1369	34703	18250	0	
98	1394	34729	18497	0	
101	1419	34799	18775	0	
104	1445	34882	19065	0	
108	1478	35008	19462	0	
110	1489	34940	19560	0	

	WUA (ft <sup>2</sup> /1000ft)				
	Q	Adult	Juvenile	Fry	Spawning
	(cfs)				
18	27883	35257		3997	
20	28750	35767		4273	
25	31175	37174		4644	
30	32975	38287		4923	
35	34303	39179		5004	
40	35120	39838		5022	
43.9	35619	40256		5010	
46.7	35931	40535		5009	
49	36180	40744		5000	
52	36483	40994		4985	
55	36809	41242		4915	
58	37076	41405		4866	
61	37327	41584		4788	
64	37583	41822		4692	
67	37833	42144		4570	
70	38099	42547		4439	
73	38340	42930		4328	
76	38623	43454		4190	
77.2	38708	43607		4150	
80	38923	44037		4043	
83	39163	44525		3914	
86	39392	44990		3803	
89	39626	45470		3690	
92	39856	45963		3574	
95	40091	46482		3450	
98	40318	47021		3322	
101	40504	47545		3196	
104	40673	48062		3068	
108	40913	48746		2894	
110	40987	48945		2840	

	WUA (ft <sup>2</sup> /1000ft)				
	Q	Adult	Juvenile	Fry	Spawning
	(cfs)				
18	25816	25816	25816	617	
20	25252	25252	25252	695	
25	24433	24433	24433	849	
30	23463	23463	23463	1001	
35	22526	22526	22526	1136	
40	21594	21594	21594	1252	
43.9	20986	20986	20986	1325	
46.7	20544	20544	20544	1374	
49	20209	20209	20209	1404	
52	19801	19801	19801	1439	
55	19439	19439	19439	1450	
58	19010	19010	19010	1467	
61	18649	18649	18649	1474	
64	18346	18346	18346	1478	
67	18103	18103	18103	1477	
70	17917	17917	17917	1472	
73	17772	17772	17772	1468	
76	17779	17779	17779	1450	
77.2	17739	17739	17739	1447	
80	17724	17724	17724	1433	
83	17767	17767	17767	1412	
86	17788	17788	17788	1393	
89	17873	17873	17873	1373	
92	18036	18036	18036	1353	
95	18250	18250	18250	1333	
98	18497	18497	18497	1312	
101	18775	18775	18775	1294	
104	19065	19065	19065	1271	
108	19462	19462	19462	1212	
110	19560	19560	19560	1188	

Reach 632 Williamson River, Site 8, Composite WUA

	WUA (ft <sup>2</sup> /1000ft)				
	Q (cfs)	Holding	Juvenile	Larvae	Spawning
Klamath Largescale Sucker	18	18475	29806	13392	19867
	20	19376	30687	12750	20734
	25	21936	33201	11760	22844
	30	23898	34891	10864	24616
	35	25772	36104	10229	25979
	40	27255	36696	9636	26725
	43.9	28196	36953	9166	27163
	46.7	28716	37048	8828	27475
	49	29102	37130	8563	27725
	52	29483	37159	8204	28013
	55	29914	37250	7866	28252
	58	30162	37214	7522	28475
	61	30461	37224	7238	28640
	64	30767	37245	7010	28783
	67	31091	37280	6863	28895
	70	31409	37348	6783	28999
	73	31598	37351	6726	29101
	76	31905	37472	6733	29187
	77.2	31958	37466	6723	29214
	80	32148	37510	6739	29275
	83	32388	37596	6765	29325
	86	32570	37649	6800	29369
	89	32756	37712	6847	29403
	92	32940	37781	6914	29426
	95	33131	37868	7006	29444
	98	33329	37964	7119	29452
	101	33512	38041	7247	29422
	104	33690	38133	7384	29361
	108	33902	38277	7569	29291
	110	33871	38237	7626	29251

	WUA (ft <sup>2</sup> /1000ft)				
	Q (cfs)	Holding	Juvenile	Larvae	Spawning
Shorthnose Sucker	18	726	11047	13392	0
	20	746	11082	12750	0
	25	812	11476	11760	0
	30	863	11334	10864	0
	35	889	11213	10229	0
	40	890	10912	9636	0
	43.9	890	10722	9166	0
	46.7	890	10549	8828	0
	49	890	10437	8563	0
	52	890	10250	8204	0
	55	890	10156	7866	0
	58	890	9980	7522	0
	61	890	9877	7238	0
	64	890	9803	7010	0
	67	890	9753	6863	0
	70	890	9735	6783	0
	73	890	9693	6726	0
	76	890	9724	6733	0
	77.2	890	9699	6723	0
	80	890	9672	6739	0
	83	890	9672	6765	0
	86	890	9649	6800	0
	89	890	9627	6847	0
	92	890	9616	6914	0
	95	890	9595	7006	0
	98	890	9576	7119	0
	101	890	9554	7247	0
	104	890	9545	7384	0
	108	890	9544	7569	0
	110	890	9491	7626	0

	WUA (ft <sup>2</sup> /1000ft)				
	Q (cfs)	Holding	Juvenile	Larvae	Spawning
Lost River Sucker	18	1780	11047	13392	0
	20	1780	11082	12750	0
	25	1780	11476	11760	0
	30	1780	11334	10864	0
	35	1780	11213	10229	0
	40	1780	10912	9636	0
	43.9	1780	10722	9166	0
	46.7	1780	10549	8828	0
	49	1780	10437	8563	0
	52	1780	10250	8204	0
	55	1780	10156	7866	0
	58	1780	9980	7522	0
	61	1780	9877	7238	0
	64	1780	9803	7010	0
	67	1780	9753	6863	0
	70	1780	9735	6783	0
	73	1780	9693	6726	0
	76	1780	9724	6733	0
	77.2	1780	9699	6723	0
	80	1780	9672	6739	0
	83	1780	9672	6765	0
	86	1780	9649	6800	0
	89	1780	9627	6847	0
	92	1780	9616	6914	0
	95	1780	9595	7006	0
	98	1780	9576	7119	0
	101	1780	9554	7247	0
	104	1780	9545	7384	0
	108	1780	9544	7569	0
	110	1780	9491	7626	0

	WUA (ft <sup>2</sup> /1000ft)		
	Q (cfs)	Adult	Juvenile
Winter Rainbow Trout	18	216	440
	20	227	459
	25	266	521
	30	296	568
	35	325	615
	40	352	641
	43.9	370	637
	46.7	382	628
	49	394	618
	52	405	598
	55	420	580
	58	429	554
	61	441	534
	64	453	514
	67	465	495
	70	477	477
	73	486	456
	76	497	440
	77.2	500	431
	80	509	413
	83	518	394
	86	520	375
	89	511	357
	92	503	340
	95	490	323
	98	474	306
	101	459	290
	104	445	275
	108	426	255
	110	412	240