

12-4-2009

Ex. 277-US-447

Unknown

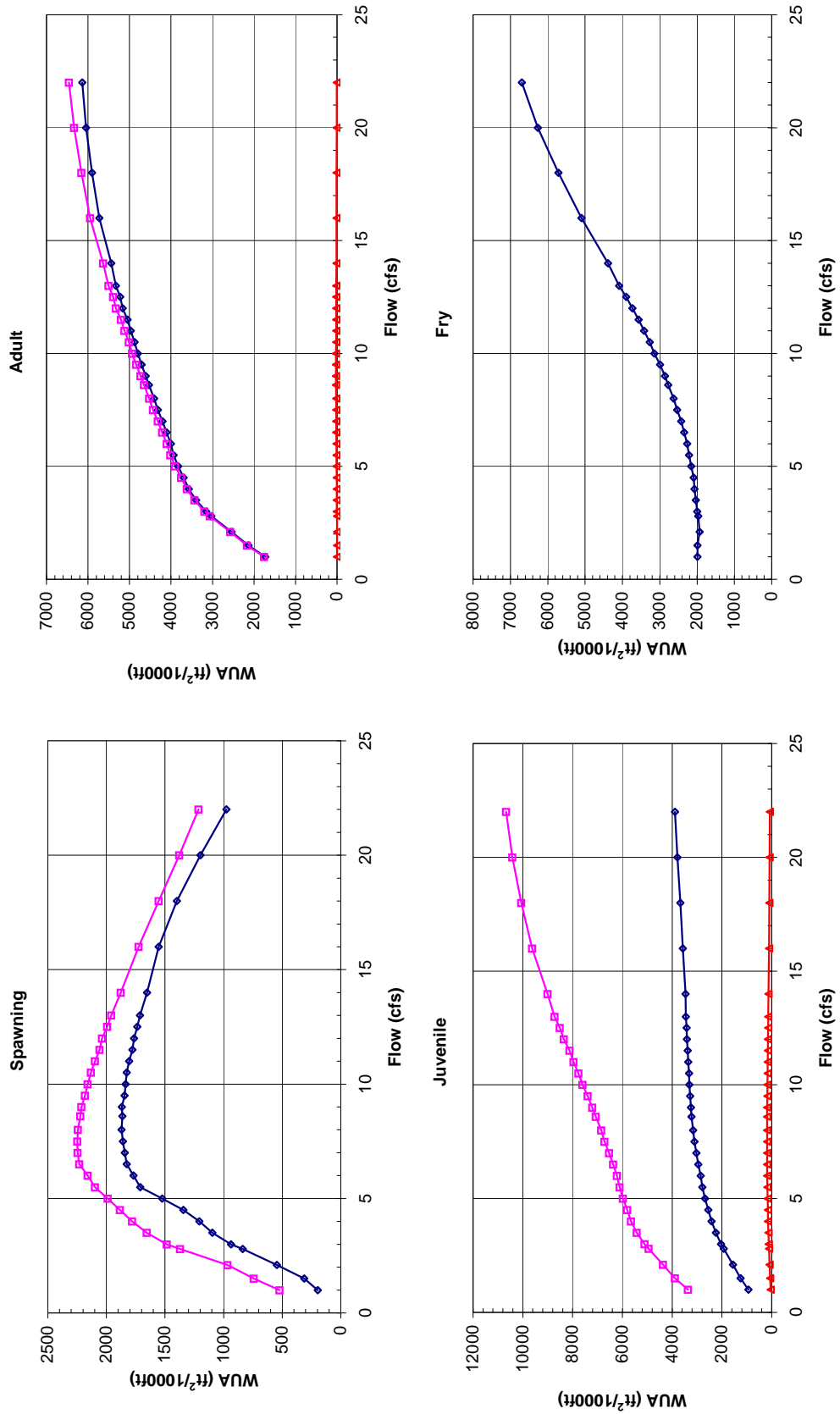
Follow this and additional works at: <https://digitalcommons.law.uidaho.edu/all>

Recommended Citation

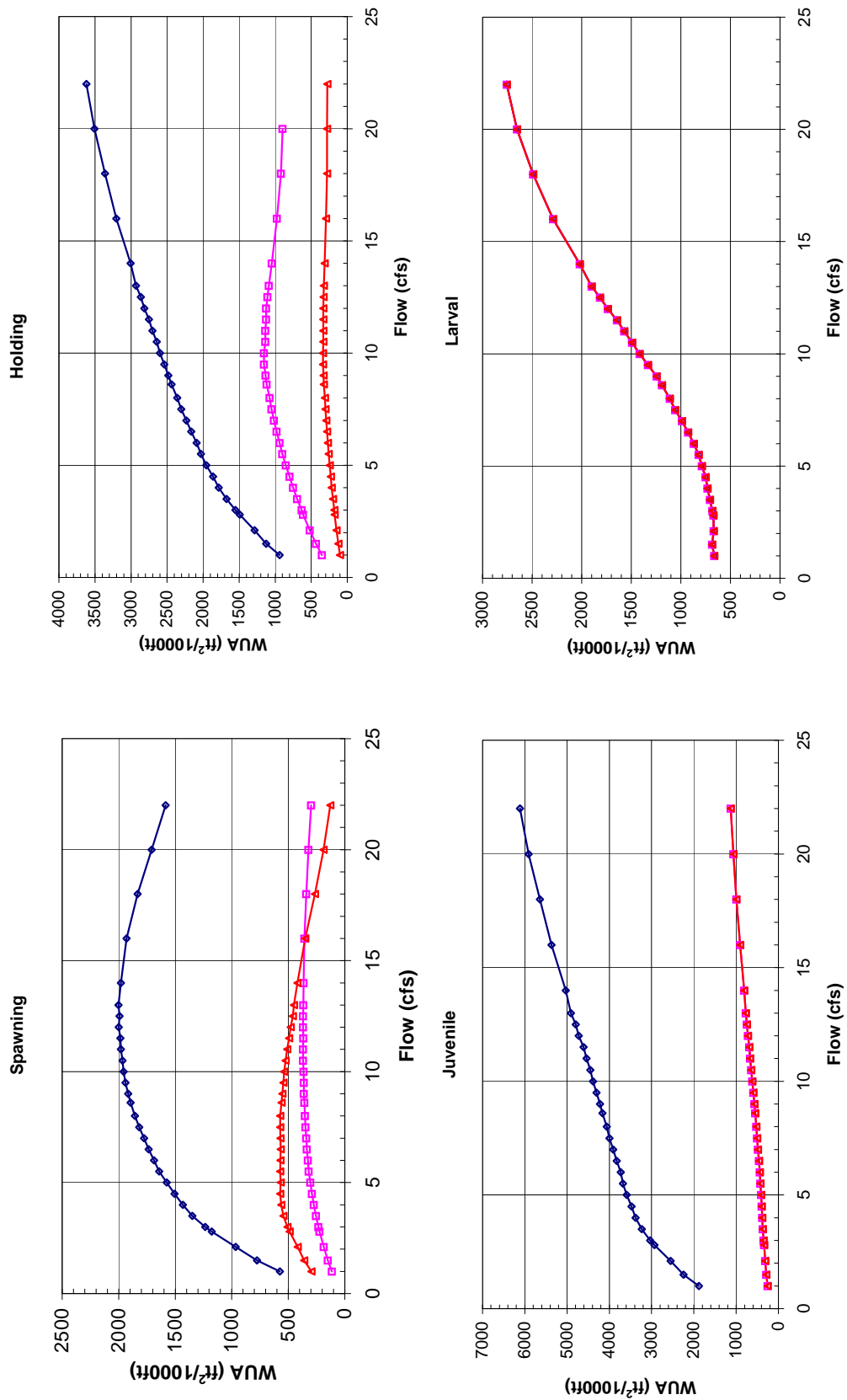
Unknown, "Ex. 277-US-447" (2009). *Hedden-Nicely Collection, All*. 369.
<https://digitalcommons.law.uidaho.edu/all/369>

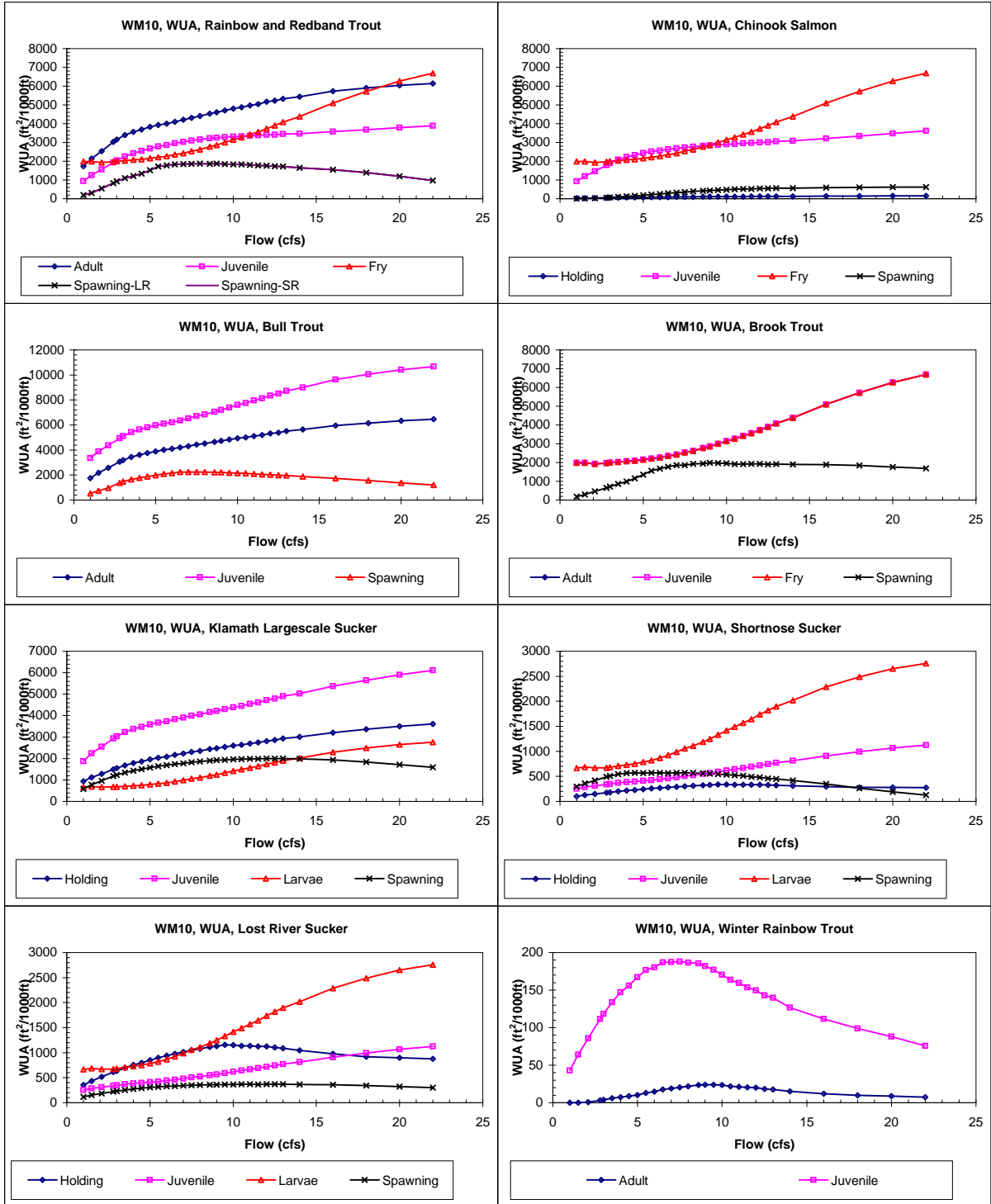
This Expert Report is brought to you for free and open access by the Hedden-Nicely at Digital Commons @ UIdaho Law. It has been accepted for inclusion in Hedden-Nicely Collection, All by an authorized administrator of Digital Commons @ UIdaho Law. For more information, please contact annablaine@uidaho.edu.

Site WM 10 Priority Species Habitat - Flow Curves



Site WM 10 Priority Species Habitat - Flow Curves





Reach 634 Williamson River, Site 10, Composite WUA

	WUA (ft ² /1000ft)				
	Q	Spawning - Spawning -			
	(cfs)	Adult	Juvenile	Fry	Large River Small River
1	1728	940	1992	197	197
1.5	2136	1249	1988	312	312
2.1	2540	1557	1933	546	546
2.8	3027	1929	1966	838	838
3	3155	2035	1995	936	936
3.5	3396	2247	2031	1097	1097
4	3570	2418	2069	1207	1207
4.5	3693	2544	2093	1343	1343
5	3824	2678	2159	1524	1524
5.5	3935	2791	2211	1712	1712
6	4003	2854	2263	1769	1769
6.5	4105	2954	2346	1828	1828
7	4205	3030	2425	1842	1842
7.5	4315	3102	2533	1859	1859
8	4405	3154	2625	1871	1871
8.6	4530	3220	2770	1864	1864
9	4608	3250	2860	1869	1869
9.5	4707	3283	2994	1844	1844
10	4799	3311	3141	1836	1836
10.5	4875	3326	3270	1827	1827
11	4972	3358	3421	1805	1805
11.5	5047	3374	3562	1778	1778
12	5165	3407	3734	1764	1764
12.5	5224	3415	3897	1736	1736
13	5327	3456	4089	1713	1713
14	5440	3467	4381	1654	1654
16	5728	3575	5095	1555	1555
18	5904	3675	5714	1399	1399
20	6047	3787	6267	1197	1197
22	6140	3889	6690	977	975

	WUA (ft ² /1000ft)			
	Q	Spawning		
	(cfs)	Holding	Juvenile	Fry
1	23	928	1992	4
1.5	30	1199	1988	13
2.1	39	1465	1933	28
2.8	49	1793	1966	57
3	52	1891	1995	67
3.5	58	2078	2031	93
4	64	2224	2069	121
4.5	69	2326	2093	154
5	75	2434	2159	186
5.5	81	2519	2211	223
6	85	2560	2263	257
6.5	90	2634	2346	292
7	95	2685	2425	326
7.5	99	2737	2533	358
8	102	2774	2625	388
8.6	106	2822	2770	416
9	109	2846	2860	437
9.5	112	2874	2994	459
10	114	2902	3141	480
10.5	116	2920	3270	502
11	119	2953	3421	518
11.5	121	2972	3562	528
12	124	3005	3734	549
12.5	125	3020	3897	554
13	128	3062	4089	561
14	130	3084	4381	568
16	137	3213	5095	587
18	144	3340	5714	602
20	152	3483	6267	625
22	159	3617	6690	622

	WUA (ft ² /1000ft)			
	Q	Spawning		
	(cfs)	Adult	Juvenile	Fry
1	1755	3368		523
1.5	2166	3888		743
2.1	2572	4364		966
2.8	3061	4948		1371
3	3190	5111		1485
3.5	3437	5419		1655
4	3620	5651		1782
4.5	3754	5809		1885
5	3897	5979		1990
5.5	4019	6107		2099
6	4100	6217		2160
6.5	4211	6368		2232
7	4317	6533		2245
7.5	4432	6714		2248
8	4523	6853		2243
8.6	4650	7067		2223
9	4731	7206		2213
9.5	4836	7397		2183
10	4934	7597		2159
10.5	5018	7762		2133
11	5121	7956		2098
11.5	5202	8124		2059
12	5328	8351		2037
12.5	5395	8517		1995
13	5505	8726		1960
14	5632	9003		1877
16	5948	9629		1725
18	6157	10065		1554
20	6337	10422		1379
22	6456	10675		1214

	WUA (ft ² /1000ft)			
	Q	Spawning		
	(cfs)	Adult	Juvenile	Fry
1	1992	1992	1992	177
1.5	1988	1988	1988	302
2.1	1933	1933	1933	459
2.8	1966	1966	1966	643
3	1995	1995	1995	718
3.5	2031	2031	2031	860
4	2069	2069	2069	990
4.5	2093	2093	2093	1153
5	2159	2159	2159	1351
5.5	2211	2211	2211	1562
6	2263	2263	2263	1669
6.5	2346	2346	2346	1781
7	2425	2425	2425	1860
7.5	2533	2533	2533	1862
8	2625	2625	2625	1925
8.6	2770	2770	2770	1941
9	2860	2860	2860	1981
9.5	2994	2994	2994	1979
10	3141	3141	3141	1961
10.5	3270	3270	3270	1915
11	3421	3421	3421	1909
11.5	3562	3562	3562	1923
12	3734	3734	3734	1927
12.5	3897	3897	3897	1905
13	4089	4089	4089	1919
14	4381	4381	4381	1899
16	5095	5095	5095	1890
18	5714	5714	5714	1840
20	6267	6267	6267	1758
22	6690	6690	6690	1689

Reach 634 Williamson River, Site 10, Composite WUA

	Q (cfs)	WUA (ft ² /1000ft)			
		Holding	Juvenile	Larvae	Spawning
Klamath Largesacle Sucker	1	940	1879	663	574
	1.5	1125	2244	684	777
	2.1	1286	2552	669	965
	2.8	1491	2931	672	1177
	3	1552	3034	683	1235
	3.5	1674	3230	706	1348
	4	1782	3379	730	1433
	4.5	1862	3476	749	1505
	5	1954	3591	788	1576
	5.5	2029	3677	820	1642
	6	2088	3733	869	1687
	6.5	2166	3827	926	1735
	7	2233	3908	989	1775
	7.5	2303	3996	1058	1819
	8	2358	4060	1111	1855
	8.6	2436	4160	1191	1896
	9	2481	4220	1246	1917
	9.5	2538	4303	1331	1941
	10	2598	4385	1417	1957
	10.5	2643	4451	1491	1967
	11	2702	4541	1571	1980
	11.5	2750	4612	1644	1984
	12	2815	4724	1737	2000
	12.5	2862	4796	1814	1993
	13	2930	4907	1898	2001
	14	3007	5033	2020	1981
	16	3203	5370	2287	1930
	18	3360	5644	2490	1834
	20	3505	5907	2653	1708
	22	3617	6116	2757	1585

	Q (cfs)	WUA (ft ² /1000ft)			
		Holding	Juvenile	Larvae	Spawning
Shorthead Sucker	1	101	252	663	296
	1.5	124	284	684	359
	2.1	148	309	669	418
	2.8	175	340	672	489
	3	181	350	683	508
	3.5	199	369	706	544
	4	215	384	730	563
	4.5	228	395	749	571
	5	244	411	788	567
	5.5	257	425	820	573
	6	268	441	869	569
	6.5	281	462	926	567
	7	292	483	989	570
	7.5	304	506	1058	571
	8	312	524	1111	572
	8.6	324	550	1191	560
	9	330	567	1246	553
	9.5	337	592	1331	543
	10	338	620	1417	536
	10.5	334	643	1491	525
	11	334	667	1571	511
	11.5	332	690	1644	492
	12	333	718	1737	478
	12.5	328	744	1814	459
	13	324	773	1898	451
	14	313	812	2020	419
	16	296	908	2287	351
	18	282	992	2490	265
	20	279	1068	2653	189
	22	277	1127	2757	129

	Q (cfs)	WUA (ft ² /1000ft)			
		Holding	Juvenile	Larvae	Spawning
Lost River Sucker	1	352	252	663	114
	1.5	435	284	684	151
	2.1	518	309	669	186
	2.8	611	340	672	224
	3	634	350	683	233
	3.5	696	369	706	254
	4	753	384	730	273
	4.5	799	395	749	291
	5	853	411	788	305
	5.5	901	425	820	318
	6	939	441	869	327
	6.5	979	462	926	335
	7	1015	483	989	342
	7.5	1051	506	1058	348
	8	1076	524	1111	353
	8.6	1117	550	1191	357
	9	1132	567	1246	361
	9.5	1154	592	1331	362
	10	1153	620	1417	365
	10.5	1138	643	1491	369
	11	1136	667	1571	368
	11.5	1125	690	1644	367
	12	1125	718	1737	370
	12.5	1106	744	1814	368
	13	1089	773	1898	368
	14	1048	812	2020	365
	16	976	908	2287	357
	18	920	992	2490	341
	20	897	1068	2653	322
	22	878	1127	2757	299

	Q (cfs)	WUA (ft ² /1000ft)	
		Adult	Juvenile
Winter Rainbow Trout	1	0	43
	1.5	0	64
	2.1	1	86
	2.8	3	112
	3	4	118
	3.5	6	134
	4	7	147
	4.5	9	156
	5	10	167
	5.5	13	177
	6	15	180
	6.5	17	187
	7	19	187
	7.5	21	188
	8	22	187
	8.6	24	185
	9	24	182
	9.5	24	177
	10	24	170
	10.5	22	164
	11	21	159
	11.5	20	153
	12	20	149
	12.5	18	143
	13	18	140
	14	15	127
	16	12	112
	18	10	99
	20	9	88
	22	8	76

