

12-4-2009

Ex. 277-US-452

Unknown

Follow this and additional works at: <https://digitalcommons.law.uidaho.edu/all>

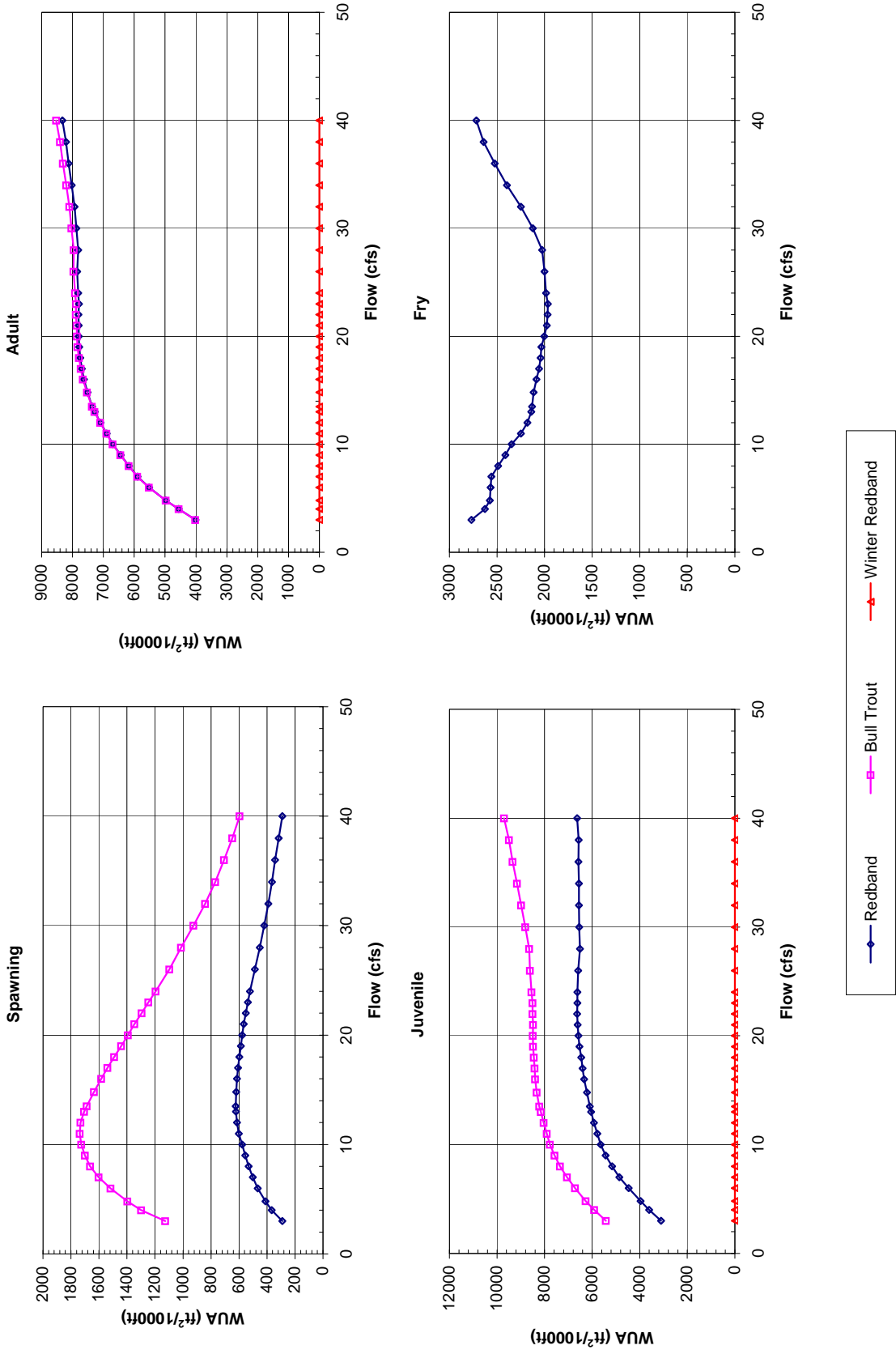
---

### Recommended Citation

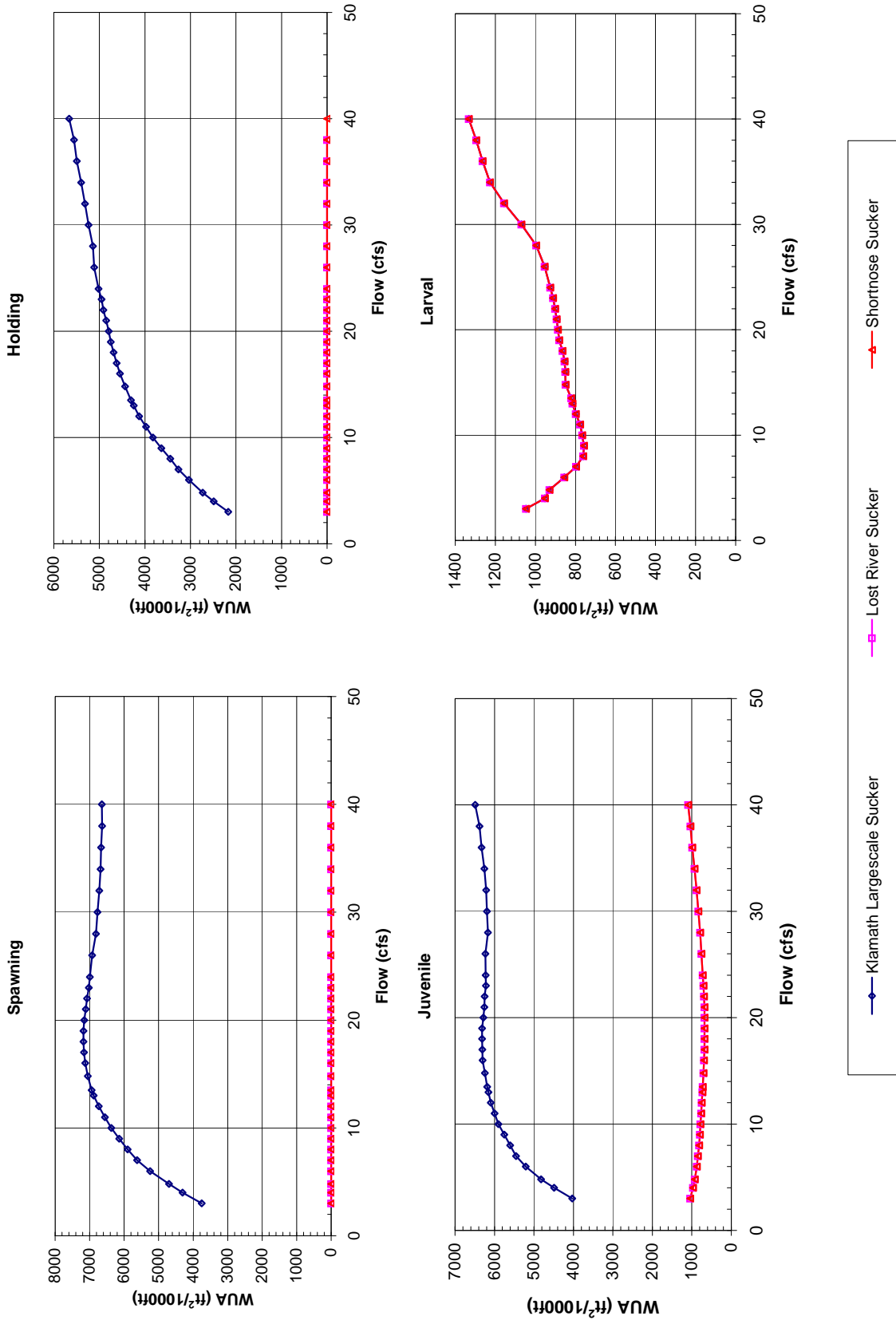
Unknown, "Ex. 277-US-452" (2009). *Hedden-Nicely Collection, All*. 374.  
<https://digitalcommons.law.uidaho.edu/all/374>

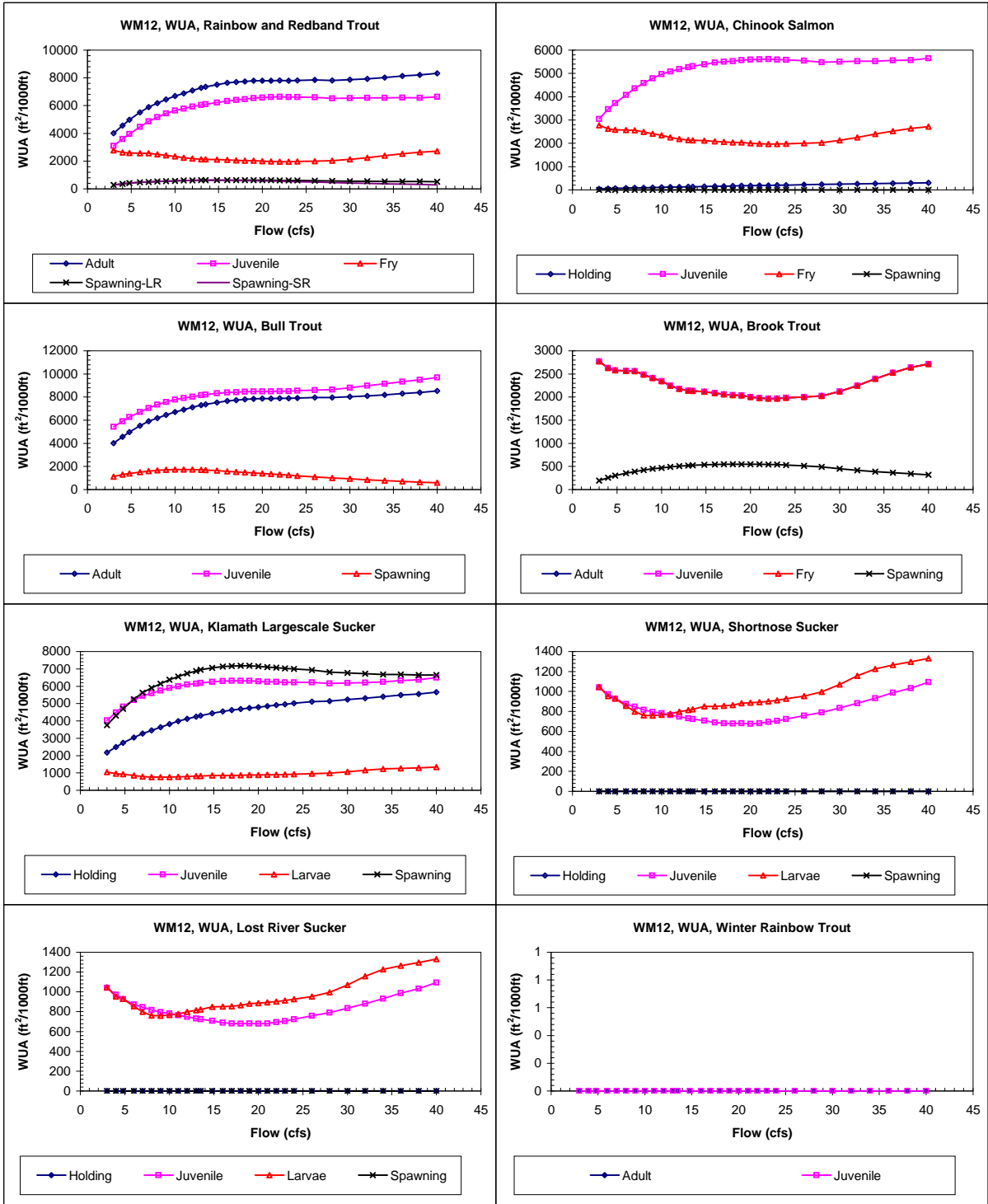
This Expert Report is brought to you for free and open access by the Hedden-Nicely at Digital Commons @ UIdaho Law. It has been accepted for inclusion in Hedden-Nicely Collection, All by an authorized administrator of Digital Commons @ UIdaho Law. For more information, please contact [annablaine@uidaho.edu](mailto:annablaine@uidaho.edu).

# Site WM 12 Priority Species Habitat - Flow Curves



# Site WM 12 Priority Species Habitat - Flow Curves





Claim Reach 636 Williamson River, Site 12, Composite WUA

	WUA (ft <sup>2</sup> /1000ft)				
	Q	Adult	Juvenile	Fry	Spawning - Spawning -
	(cfs)			Large River	Small River
3	4017	3103	2769	290	290
4	4556	3599	2627	365	365
4.8	4977	3962	2577	410	410
6	5520	4462	2568	466	466
7	5895	4858	2560	501	501
8	6173	5165	2488	530	530
9	6440	5430	2413	554	554
10	6688	5638	2347	578	578
11	6889	5786	2249	602	602
12	7094	5926	2179	614	614
13	7275	6040	2138	623	621
13.5	7361	6100	2132	626	623
14.8	7513	6221	2115	629	621
16	7633	6334	2086	630	615
17	7698	6402	2058	629	608
18	7746	6462	2042	627	597
19	7786	6533	2034	625	587
20	7798	6576	2003	623	577
21	7795	6607	1977	619	566
22	7809	6631	1968	614	552
23	7795	6622	1966	607	537
24	7816	6624	1984	600	522
26	7851	6588	2001	584	487
28	7816	6513	2026	564	452
30	7876	6539	2124	553	420
32	7934	6551	2249	544	390
34	8026	6556	2396	538	365
36	8129	6574	2524	534	342
38	8210	6567	2640	524	316
40	8329	6627	2717	515	290

	WUA (ft <sup>2</sup> /1000ft)				
	Q	Holding	Juvenile	Fry	Spawning
	(cfs)				
3	50	3049	2769	0	
4	60	3462	2627	0	
4.8	67	3730	2577	0	
6	78	4070	2568	0	
7	87	4354	2560	0	
8	95	4580	2488	0	
9	104	4794	2413	0	
10	112	4971	2347	0	
11	120	5084	2249	0	
12	128	5185	2179	0	
13	135	5262	2138	0	
13.5	139	5307	2132	0	
14.8	148	5388	2115	0	
16	157	5464	2086	0	
17	164	5500	2058	0	
18	170	5530	2042	0	
19	177	5574	2034	0	
20	184	5593	2003	0	
21	190	5604	1977	0	
22	197	5611	1968	0	
23	203	5587	1966	0	
24	209	5580	1984	0	
26	222	5543	2001	0	
28	233	5479	2026	0	
30	246	5506	2124	0	
32	259	5522	2249	0	
34	271	5529	2396	0	
36	283	5557	2524	0	
38	294	5570	2640	0	
40	307	5645	2717	0	

	WUA (ft <sup>2</sup> /1000ft)				
	Q	Adult	Juvenile	Fry	Spawning
	(cfs)				
3	4025	5422		1127	
4	4563	5910		1299	
4.8	4981	6267		1397	
6	5524	6715		1517	
7	5901	7055		1602	
8	6180	7346		1664	
9	6448	7574		1701	
10	6698	7772		1726	
11	6901	7908		1737	
12	7107	8036		1732	
13	7289	8158		1706	
13.5	7375	8216		1688	
14.8	7534	8331		1635	
16	7663	8394		1583	
17	7735	8423		1540	
18	7791	8455		1491	
19	7840	8486		1442	
20	7861	8489		1394	
21	7868	8485		1346	
22	7889	8505		1296	
23	7886	8507		1247	
24	7916	8548		1196	
26	7970	8608		1098	
28	7957	8641		1013	
30	8032	8805		924	
32	8102	8978		843	
34	8201	9157		770	
36	8313	9338		707	
38	8402	9500		647	
40	8533	9702		596	

	WUA (ft <sup>2</sup> /1000ft)				
	Q	Adult	Juvenile	Fry	Spawning
	(cfs)				
3	2769	2769	2769	196	
4	2627	2627	2627	259	
4.8	2577	2577	2577	300	
6	2568	2568	2568	354	
7	2560	2560	2560	389	
8	2488	2488	2488	421	
9	2413	2413	2413	448	
10	2347	2347	2347	470	
11	2249	2249	2249	492	
12	2179	2179	2179	509	
13	2138	2138	2138	522	
13.5	2132	2132	2132	526	
14.8	2115	2115	2115	536	
16	2086	2086	2086	542	
17	2058	2058	2058	546	
18	2042	2042	2042	547	
19	2034	2034	2034	547	
20	2003	2003	2003	547	
21	1977	1977	1977	547	
22	1968	1968	1968	543	
23	1966	1966	1966	539	
24	1984	1984	1984	531	
26	2001	2001	2001	513	
28	2026	2026	2026	493	
30	2124	2124	2124	450	
32	2249	2249	2249	419	
34	2396	2396	2396	389	
36	2524	2524	2524	365	
38	2640	2640	2640	344	
40	2717	2717	2717	320	

Claim Reach 636 Williamson River, Site 12, Composite WUA

	WUA (ft <sup>2</sup> /1000ft)				
	Q (cfs)	Holding	Juvenile	Larvae	Spawning
Klamath Largescale Sucker	3	2170	4028	1046	3752
	4	2492	4489	953	4308
	4.8	2733	4821	929	4702
	6	3035	5207	855	5245
	7	3263	5452	797	5623
	8	3446	5603	761	5895
	9	3637	5754	758	6140
	10	3824	5899	766	6371
	11	3978	5995	776	6556
	12	4127	6093	798	6733
	13	4245	6151	814	6881
	13.5	4306	6186	821	6945
	14.8	4435	6245	850	7051
	16	4547	6299	851	7128
	17	4620	6310	855	7162
	18	4685	6313	865	7179
	19	4750	6311	881	7181
	20	4797	6284	887	7153
	21	4849	6258	893	7108
	22	4914	6249	902	7077
	23	4951	6218	912	7024
	24	5018	6222	926	6996
	26	5116	6228	954	6930
	28	5143	6167	995	6814
	30	5239	6191	1069	6771
	32	5314	6212	1157	6721
	34	5402	6253	1226	6684
	36	5495	6325	1264	6671
	38	5555	6376	1296	6641
	40	5663	6488	1332	6645

	WUA (ft <sup>2</sup> /1000ft)				
	Q (cfs)	Holding	Juvenile	Larvae	Spawning
Shorthnose Sucker	3	0	1040	1046	0
	4	0	972	953	0
	4.8	0	926	929	0
	6	0	873	855	0
	7	0	847	797	0
	8	0	817	761	0
	9	0	796	758	0
	10	0	782	766	0
	11	0	764	776	0
	12	0	749	798	0
	13	0	732	814	0
	13.5	0	725	821	0
	14.8	0	707	850	0
	16	0	690	851	0
	17	0	681	855	0
	18	0	680	865	0
	19	0	680	881	0
	20	0	677	887	0
	21	0	682	893	0
	22	0	694	902	0
	23	0	706	912	0
	24	0	723	926	0
	26	0	758	954	0
	28	0	791	995	0
	30	0	836	1069	0
	32	0	881	1157	0
	34	0	932	1226	0
	36	0	987	1264	0
	38	0	1034	1296	0
	40	0	1093	1332	0

	WUA (ft <sup>2</sup> /1000ft)				
	Q (cfs)	Holding	Juvenile	Larvae	Spawning
Lost River Sucker	3	0	1040	1046	0
	4	0	972	953	0
	4.8	0	926	929	0
	6	0	873	855	0
	7	0	847	797	0
	8	0	817	761	0
	9	0	796	758	0
	10	0	782	766	0
	11	0	764	776	0
	12	0	749	798	0
	13	0	732	814	0
	13.5	0	725	821	0
	14.8	0	707	850	0
	16	0	690	851	0
	17	0	681	855	0
	18	0	680	865	0
	19	0	680	881	0
	20	0	677	887	0
	21	0	682	893	0
	22	0	694	902	0
	23	0	706	912	0
	24	0	723	926	0
	26	0	758	954	0
	28	0	791	995	0
	30	0	836	1069	0
	32	0	881	1157	0
	34	0	932	1226	0
	36	0	987	1264	0
	38	0	1034	1296	0
	40	0	1093	1332	0

	WUA (ft <sup>2</sup> /1000ft)		
	Q (cfs)	Adult	Juvenile
Winter Rainbow Trout	3	0	0
	4	0	0
	4.8	0	0
	6	0	0
	7	0	0
	8	0	0
	9	0	0
	10	0	0
	11	0	0
	12	0	0
	13	0	0
	13.5	0	0
	14.8	0	0
	16	0	0
	17	0	0
	18	0	0
	19	0	0
	20	0	0
	21	0	0
	22	0	0
	23	0	0
	24	0	0
	26	0	0
	28	0	0
	30	0	0
	32	0	0
	34	0	0
	36	0	0
	38	0	0
	40	0	0