

12-4-2009

Ex. 277-US-464

Unknown

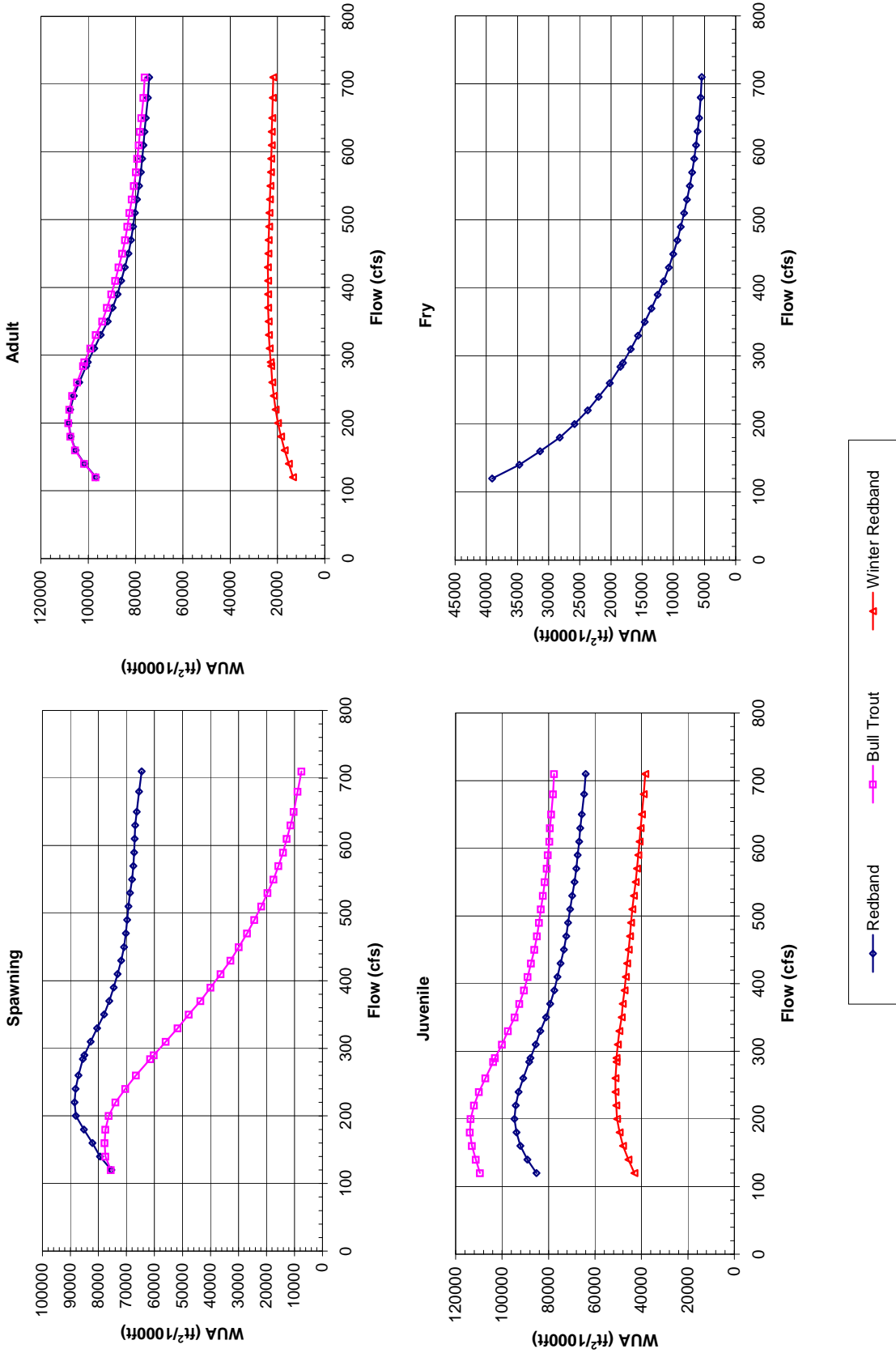
Follow this and additional works at: <https://digitalcommons.law.uidaho.edu/all>

Recommended Citation

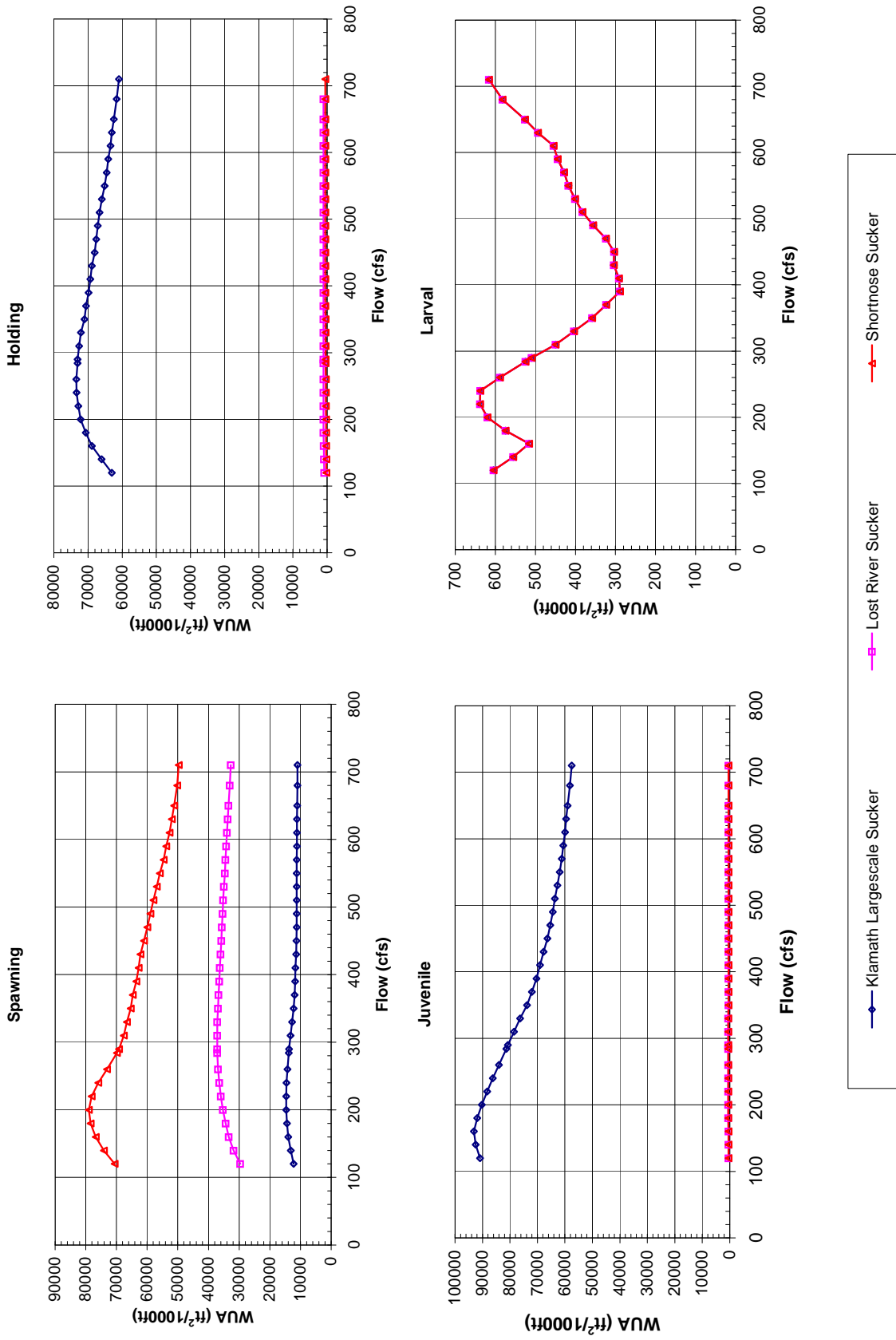
Unknown, "Ex. 277-US-464" (2009). *Hedden-Nicely Collection, All*. 386.
<https://digitalcommons.law.uidaho.edu/all/386>

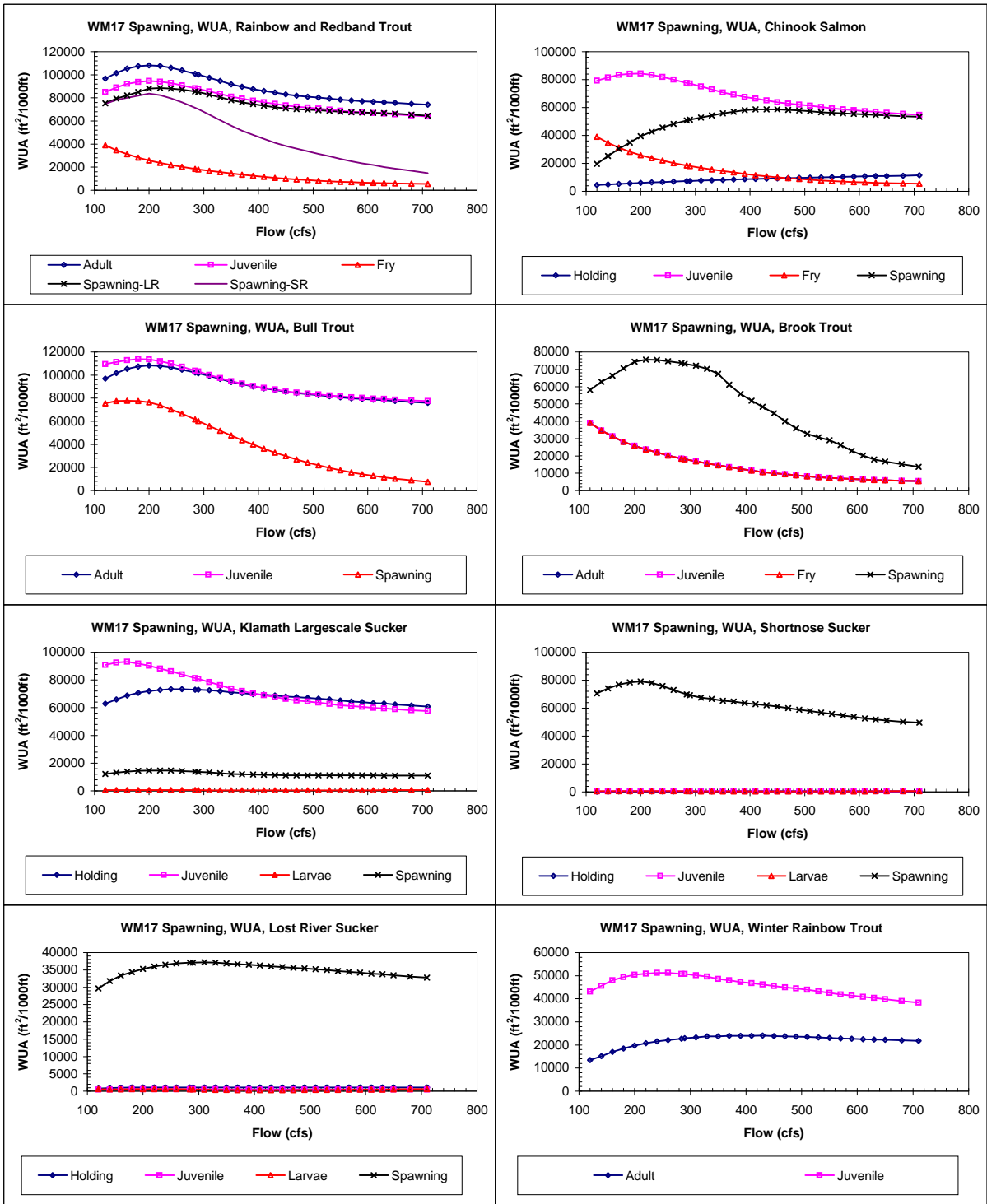
This Expert Report is brought to you for free and open access by the Hedden-Nicely at Digital Commons @ UIdaho Law. It has been accepted for inclusion in Hedden-Nicely Collection, All by an authorized administrator of Digital Commons @ UIdaho Law. For more information, please contact annablaine@uidaho.edu.

Site WM 17
Priority Species Habitat - Flow Curves



Site WM 17
Priority Species Habitat - Flow Curves





Claim Reach 640 Williamson River, Site 17 Spawning, Composite WUA

	WUA (ft ² /1000ft)				
	Q (cfs)	Spawning - Spawning -			
		Adult	Juvenile	Fry	Large River
120	96731	85160	39054	75376	74876
140	101553	89083	34678	79500	78288
160	105380	92084	31354	82109	80095
180	107382	93825	28209	85173	81952
200	108187	94669	25833	88047	83635
220	107591	94077	23723	88553	82295
240	106096	92852	21983	88169	79678
260	103797	90898	20195	87122	76146
284.2	100877	88351	18470	85525	71520
290	100194	87813	18091	85056	70249
310	97438	85591	16845	82778	65441
330	94751	83480	15685	80521	60608
350	91725	81028	14566	77996	55985
370	89656	79339	13512	76142	51623
390	87615	77553	12505	74536	48022
410	86028	76134	11543	73172	44463
430	84544	74805	10717	71892	41020
450	82993	73423	10011	70847	38381
470	81856	72414	9368	70242	36051
490	81000	71577	8789	69775	33869
510	80235	70731	8264	69276	31564
530	79378	69789	7800	68720	29425
550	78529	68846	7359	67998	27156
570	77731	68061	6972	67538	25168
590	77224	67491	6629	67271	23231
610	76599	66789	6345	67084	21845
630	76237	66340	6099	66876	20142
650	75648	65663	5874	66364	18775
680	74832	64721	5589	65486	16886
710	74226	63973	5453	64605	14926

	WUA (ft ² /1000ft)			
	Q (cfs)	Spawning		
		Holding	Juvenile	Fry
120	4563	79188	39054	19569
140	4960	81568	34678	25268
160	5357	83328	31354	30446
180	5718	84092	28209	34973
200	6049	84319	25833	39349
220	6360	83373	23723	42710
240	6672	81918	21983	45587
260	6964	79979	20195	48221
284.2	7296	77589	18470	50844
290	7385	77098	18091	51279
310	7653	75044	16845	52899
330	7920	73079	15685	54370
350	8143	70840	14566	55876
370	8411	69316	13512	56997
390	8632	67631	12505	58170
410	8869	66331	11543	58723
430	9106	65114	10717	58697
450	9291	63798	10011	58673
470	9495	62847	9368	58388
490	9695	62034	8789	57913
510	9892	61235	8264	57310
530	10058	60329	7800	56575
550	10226	59423	7359	56272
570	10384	58632	6972	55867
590	10568	58066	6629	55518
610	10701	57356	6345	55129
630	10884	56937	6099	54772
650	11017	56303	5874	54394
680	11209	55420	5589	53769
710	11423	54728	5453	53470

	WUA (ft ² /1000ft)			
	Q (cfs)	Spawning		
		Adult	Juvenile	Fry
120	96934	109506		75565
140	101711	111341		77545
160	105502	113002		77803
180	107501	113920		77480
200	108377	113505		76338
220	107957	112092		73944
240	106702	110015		70353
260	104704	107199		66563
284.2	102155	103802		61519
290	101563	103005		60198
310	99142	100089		55940
330	96763	97418		51712
350	94035	94573		47769
370	92123	92593		43562
390	90174	90589		39917
410	88630	89008		36356
430	87166	87596		32882
450	85603	86077		29843
470	84402	84944		26939
490	83441	84066		24292
510	82569	83284		21838
530	81607	82412		19602
550	80702	81600		17492
570	79853	80790		15711
590	79297	80302		14053
610	78606	79677		12761
630	78193	79359		11341
650	77548	78801		10252
680	76689	78106		8875

	WUA (ft ² /1000ft)			
	Q (cfs)	Spawning		
		Adult	Juvenile	Fry
120	39054	39054	39054	58136
140	34678	34678	34678	62830
160	31354	31354	31354	66382
180	28209	28209	28209	70617
200	25833	25833	25833	74375
220	23723	23723	23723	75522
240	21983	21983	21983	75438
260	20195	20195	20195	74724
284.2	18470	18470	18470	73611
290	18091	18091	18091	73207
310	16845	16845	16845	72133
330	15685	15685	15685	70196
350	14566	14566	14566	67420
370	13512	13512	13512	61100
390	12505	12505	12505	55763
410	11543	11543	11543	51800
430	10717	10717	10717	48392
450	10011	10011	10011	44560
470	9368	9368	9368	40026
490	8789	8789	8789	35834
510	8264	8264	8264	32645
530	7800	7800	7800	30742
550	7359	7359	7359	29117
570	6972	6972	6972	26323
590	6629	6629	6629	22996
610	6345	6345	6345	20232
630	6099	6099	6099	17954
650	5874	5874	5874	16694
680	5589	5589	5589	15264

Claim Reach 640 Williamson River, Site 17 Spawning, Composite WUA

	WUA (ft ² /1000ft)			
	Q (cfs)	Holding	Juvenile	Larvae Spawning
Klamath Largehead Sucker	120	63018	90930	604 12236
	140	66023	92506	555 13171
	160	68859	93115	516 13954
	180	70674	91915	575 14377
	200	72117	90286	620 14630
	220	72808	88277	638 14648
	240	73360	86265	638 14563
	260	73397	84019	588 14277
	284.2	73083	81349	525 13861
	290	73080	80799	510 13734
	310	72581	78498	449 13223
	330	72050	76271	404 12731
	350	71023	73774	358 12231
	370	70604	72071	323 11945
	390	69799	70353	289 11772
	410	69313	69025	291 11623
	430	68834	67735	304 11441
	450	68068	66336	303 11305
	470	67592	65295	324 11251
	490	67140	64424	356 11252
	510	66616	63627	382 11266
	530	65910	62746	401 11275
	550	65155	61872	418 11246
	570	64503	61137	429 11214
	590	64049	60632	444 11183
	610	63392	59952	454 11143
630	63030	59583	494 11115	
650	62428	58978	526 11077	
680	61584	58148	582 11022	
710	60924	57532	616 10982	

	WUA (ft ² /1000ft)			
	Q (cfs)	Holding	Juvenile	Larvae Spawning
Shorthose Sucker	120	228	436	604 70616
	140	256	466	555 74066
	160	283	495	516 76791
	180	311	516	575 78407
	200	332	538	620 79050
	220	354	549	638 78059
	240	375	556	638 75901
	260	397	552	588 73085
	284.2	418	544	525 69818
	290	424	544	510 69158
	310	443	530	449 67585
	330	461	515	404 66569
	350	477	487	358 65354
	370	495	472	323 64652
	390	510	444	289 63525
	410	526	423	291 62788
	430	538	435	304 62153
	450	538	436	303 61061
	470	538	442	324 59979
	490	538	447	356 58953
	510	538	449	382 57981
	530	538	447	401 56839
	550	538	448	418 55893
	570	538	446	429 54653
	590	538	449	444 53799
	610	538	445	454 52662
630	538	450	494 51979	
650	538	450	526 51181	
680	538	460	582 50227	
710	538	481	616 49670	

	WUA (ft ² /1000ft)			
	Q (cfs)	Holding	Juvenile	Larvae Spawning
Lost River Sucker	120	798	436	604 29636
	140	894	466	555 31816
	160	991	495	516 33375
	180	1075	516	575 34386
	200	1075	538	620 35283
	220	1075	549	638 35975
	240	1075	556	638 36505
	260	1075	552	588 36911
	284.2	1075	544	525 37122
	290	1075	544	510 37142
	310	1075	530	449 37170
	330	1075	515	404 37100
	350	1075	487	358 36887
	370	1075	472	323 36692
	390	1075	444	289 36475
	410	1075	423	291 36277
	430	1075	435	304 36048
	450	1075	436	303 35831
	470	1075	442	324 35612
	490	1075	447	356 35400
	510	1075	449	382 35195
	530	1075	447	401 34945
	550	1075	448	418 34675
	570	1075	446	429 34440
	590	1075	449	444 34230
	610	1075	445	454 33954
630	1075	450	494 33740	

	WUA (ft ² /1000ft)			
	Q (cfs)	Adult	Juvenile	Fry Spawning
Winter Rainbow Trout	120	13441	43081	
	140	15217	45632	
	160	17006	47988	
	180	18516	49427	
	200	19771	50467	
	220	20800	50845	
	240	21570	51224	
	260	22181	51194	
	284.2	22714	50731	
	290	22900	50706	
	310	23309	50167	
	330	23682	49563	
	350	23742	48563	
	370	23952	48059	
	390	23925	47267	
	410	23989	46720	
	430	24055	46208	
	450	23843	45466	
	470	23721	44995	
	490	23594	44492	
	510	23445	43958	
	530	23227	43243	
	550	23014	42494	
	570	22801	41883	
	590	22679	41417	
	610	22463	40789	
630	22394	40403		

650	1075	450	526	33469
680	1075	460	582	33080
710	1075	481	616	32756

650	22226	39826
680	21984	39000
710	21812	38314