

12-8-2009

Ex. 279-US-443

Unknown

Follow this and additional works at: <https://digitalcommons.law.uidaho.edu/all>

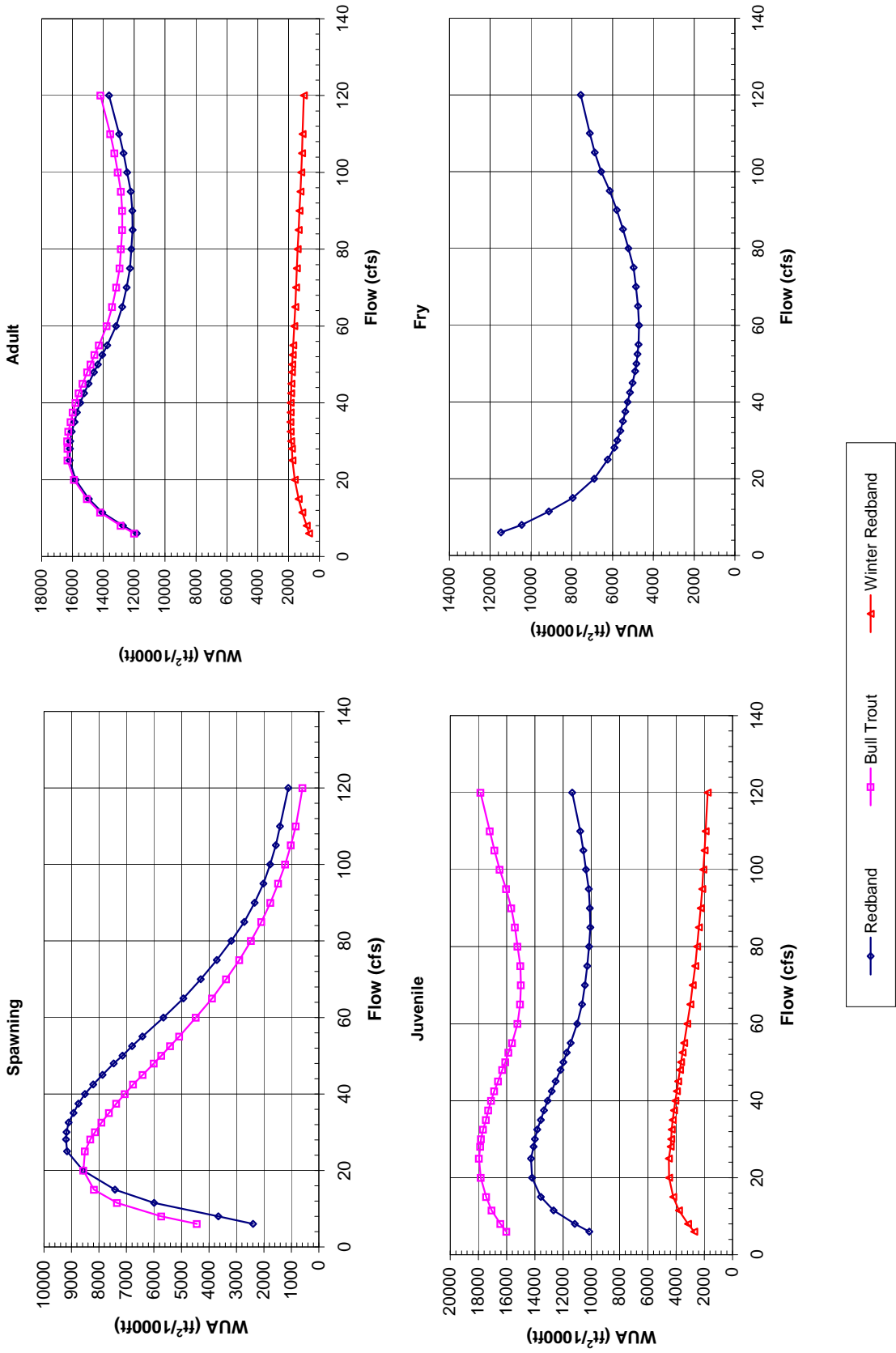
---

### Recommended Citation

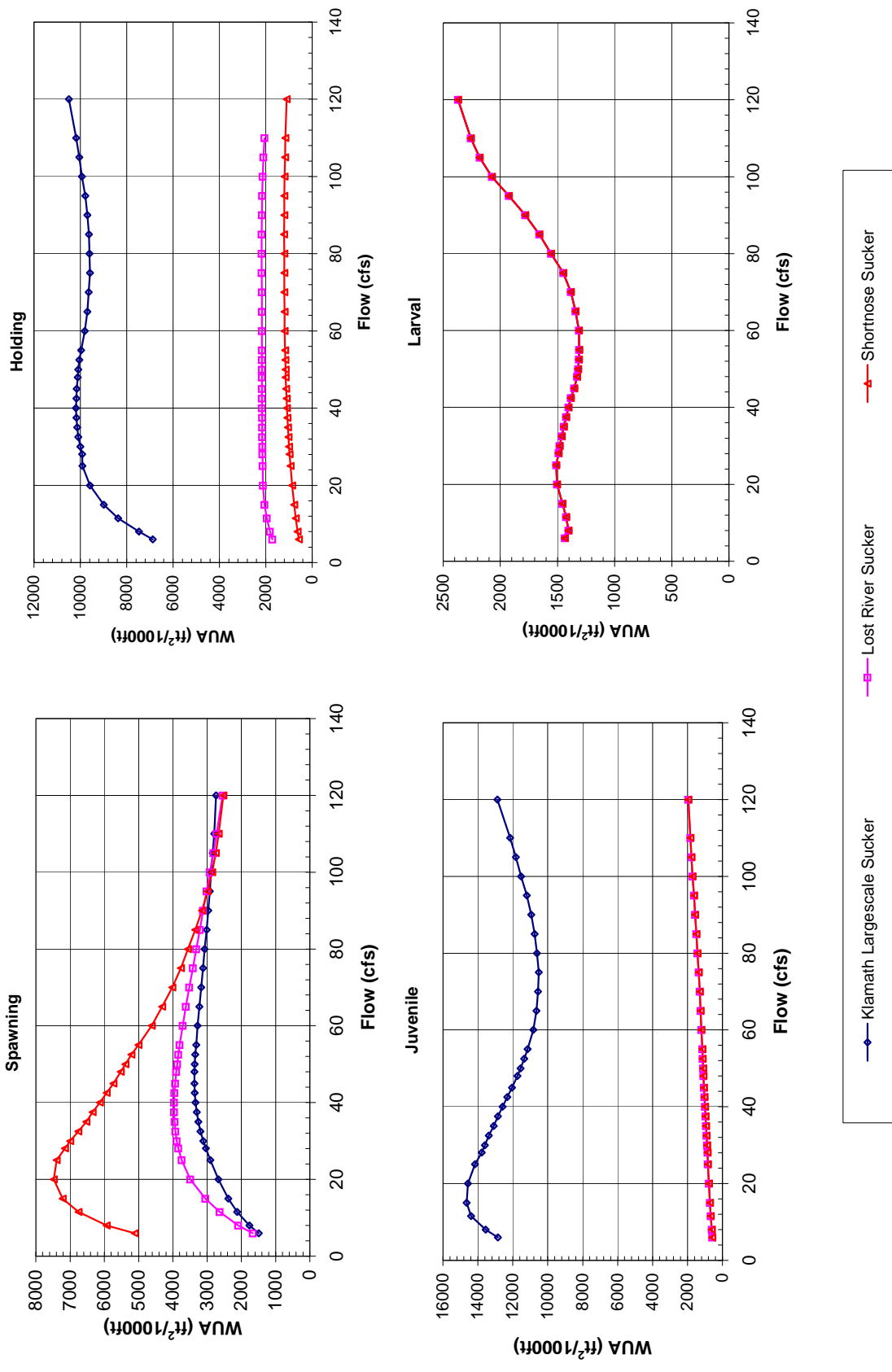
Unknown, "Ex. 279-US-443" (2009). *Hedden-Nicely Collection, All*. 430.  
<https://digitalcommons.law.uidaho.edu/all/430>

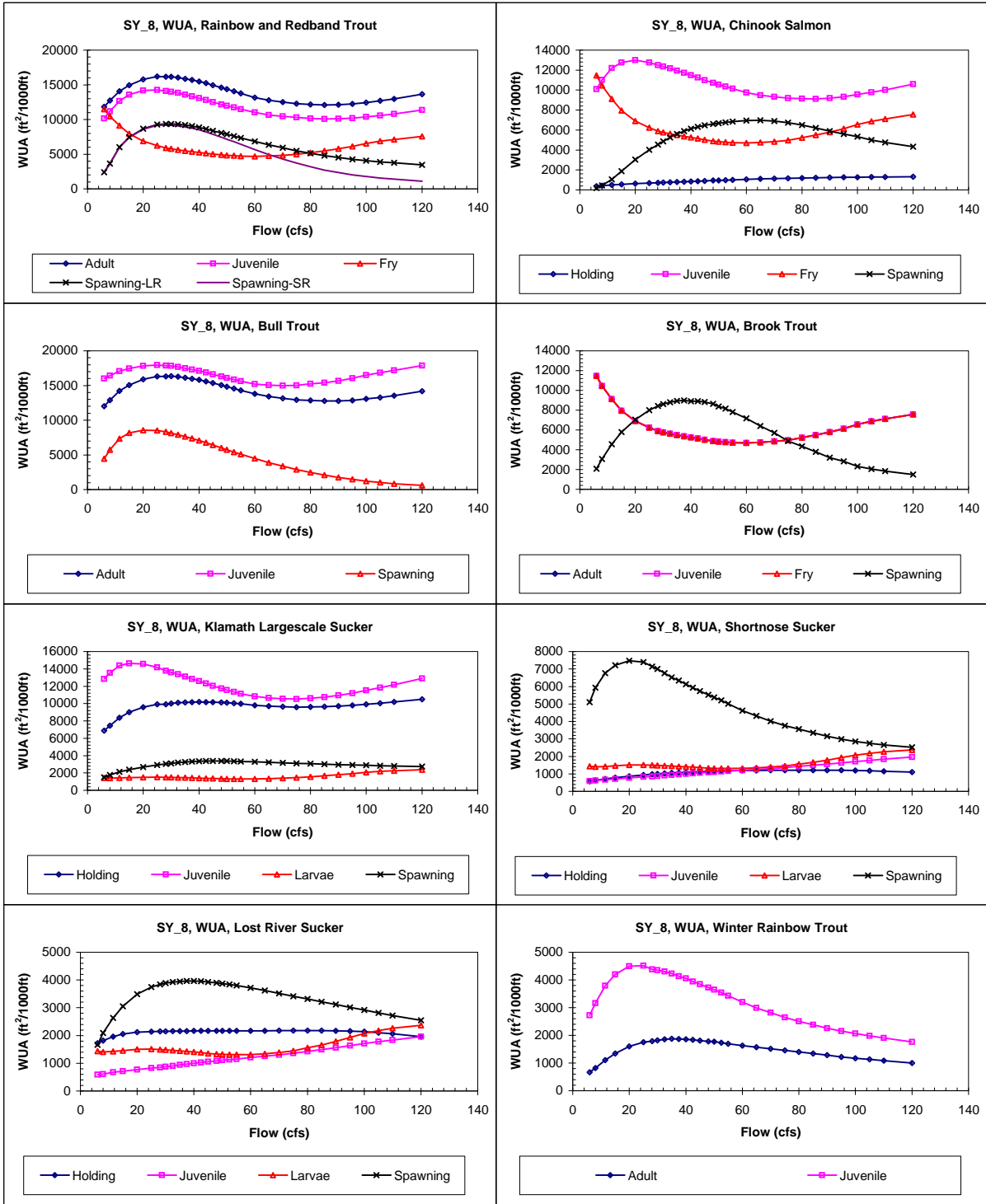
This Expert Report is brought to you for free and open access by the Hedden-Nicely at Digital Commons @ UIdaho Law. It has been accepted for inclusion in Hedden-Nicely Collection, All by an authorized administrator of Digital Commons @ UIdaho Law. For more information, please contact [annablaine@uidaho.edu](mailto:annablaine@uidaho.edu).

# Site SY 8 Priority Species Habitat - Flow Curves



# Site SY 8 Priority Species Habitat - Flow Curves





Claim Reach 665 Sycan River, Site 8, Composite WUA

**Claim Reach 665 Sycan River, Site 8, Composite WUA**

	Q (cfs)	WUA (ft <sup>2</sup> /1000ft)				
		Adult	Juvenile	Fry	Spawning -	
					Large River	Small River
6	11836	10147	11476	2397	2397	
8	12720	11176	10460	3652	3652	
11.5	14068	12680	9125	6001	5991	
15	14940	13582	7959	7462	7422	
20	15793	14195	6895	8660	8578	
25	16183	14274	6238	9268	9158	
28.1	16162	14089	5903	9340	9195	
30	16155	13996	5770	9364	9181	
32.5	16060	13836	5619	9327	9105	
35	15870	13585	5484	9191	8927	
37.5	15709	13355	5371	9063	8748	
40	15490	13097	5260	8873	8511	
42.5	15241	12811	5142	8631	8205	
45	14955	12524	5012	8371	7872	
48	14606	12185	4892	8075	7462	
50	14359	11983	4833	7858	7148	
52.5	14067	11742	4773	7612	6796	
55	13745	11470	4721	7352	6423	
60	13173	11009	4695	6825	5651	
65	12785	10656	4754	6362	4930	
70	12494	10454	4847	5916	4302	
75	12271	10285	4966	5494	3714	
80	12185	10170	5224	5130	3182	
85	12106	10082	5486	4787	2713	
90	12124	10111	5796	4523	2339	
95	12228	10177	6131	4260	2016	
100	12451	10379	6552	4071	1769	
105	12688	10566	6877	3894	1568	
110	12978	10794	7117	3746	1410	
120	13641	11355	7562	3447	1111	

	Q (cfs)	WUA (ft <sup>2</sup> /1000ft)			
		Holding	Juvenile	Fry	Spawning
6	382	10104	11476	172	
8	424	11018	10460	441	
11.5	495	12191	9125	1061	
15	553	12751	7959	1873	
20	624	12984	6895	3049	
25	688	12767	6238	4010	
28.1	720	12482	5903	4548	
30	744	12366	5770	4862	
32.5	774	12188	5619	5254	
35	802	11952	5484	5587	
37.5	830	11734	5371	5883	
40	857	11501	5260	6119	
42.5	883	11244	5142	6312	
45	908	11000	5012	6469	
48	939	10717	4892	6601	
50	960	10549	4833	6674	
52.5	984	10350	4773	6768	
55	1008	10132	4721	6849	
60	1054	9756	4695	6938	
65	1098	9472	4754	6966	
70	1136	9321	4847	6906	
75	1168	9205	4966	6728	
80	1196	9149	5224	6494	
85	1220	9125	5486	6204	
90	1241	9205	5796	5901	
95	1257	9318	6131	5613	
100	1276	9556	6552	5326	
105	1288	9771	6877	5003	
110	1299	10021	7117	4762	
120	1317	10600	7562	4332	

	Q (cfs)	WUA (ft <sup>2</sup> /1000ft)			
		Adult	Juvenile	Fry	Spawning
6	12012	16026		4435	
8	12880	16443		5732	
11.5	14207	17060		7338	
15	15063	17444		8184	
20	15906	17826		8568	
25	16315	17962		8511	
28.1	16321	17865		8313	
30	16333	17816		8147	
32.5	16268	17674		7912	
35	16114	17472		7630	
37.5	15985	17311		7370	
40	15802	17109		7063	
42.5	15591	16877		6755	
45	15344	16607		6409	
48	15042	16303		6007	
50	14826	16100		5731	
52.5	14572	15867		5407	
55	14290	15621		5083	
60	13784	15223		4474	
65	13435	15050		3884	
70	13163	14991		3374	
75	12944	15024		2892	
80	12856	15237		2468	
85	12771	15414		2091	
90	12781	15673		1763	
95	12868	16029		1482	
100	13071	16495		1227	
105	13283	16862		1015	
110	13549	17195		842	
120	14180	17858		590	

	Q (cfs)	WUA (ft <sup>2</sup> /1000ft)			
		Adult	Juvenile	Fry	Spawning
6	11476	11476	11476	2073	
8	10460	10460	10460	3080	
11.5	9125	9125	9125	4563	
15	7959	7959	7959	5774	
20	6895	6895	6895	7039	
25	6238	6238	6238	7995	
28.1	5903	5903	5903	8434	
30	5770	5770	5770	8616	
32.5	5619	5619	5619	8801	
35	5484	5484	5484	8926	
37.5	5371	5371	5371	9000	
40	5260	5260	5260	8916	
42.5	5142	5142	5142	8917	
45	5012	5012	5012	8831	
48	4892	4892	4892	8640	
50	4833	4833	4833	8369	
52.5	4773	4773	4773	8147	
55	4721	4721	4721	7814	
60	4695	4695	4695	7173	
65	4754	4754	4754	6394	
70	4847	4847	4847	5720	
75	4966	4966	4966	4890	
80	5224	5224	5224	4360	
85	5486	5486	5486	3781	
90	5796	5796	5796	3189	
95	6131	6131	6131	2825	
100	6552	6552	6552	2330	
105	6877	6877	6877	2063	
110	7117	7117	7117	1834	
120	7562	7562	7562	1489	

**Claim Reach 665 Sycan River, Site 8, Composite WUA**

	WUA (ft <sup>2</sup> /1000ft)				
	Q (cfs)	Holding	Juvenile	Larvae	Spawning
<b>Klamath Largescale Sucker</b>	6	6872	12850	1436	1492
	8	7467	13548	1404	1764
	11.5	8375	14388	1424	2122
	15	8994	14645	1457	2382
	20	9580	14566	1505	2671
	25	9915	14166	1512	2908
	28.1	9925	13777	1491	3032
	30	10000	13607	1481	3112
	32.5	10090	13374	1463	3196
	35	10135	13097	1446	3251
	37.5	10168	12848	1425	3303
	40	10192	12587	1404	3336
	42.5	10170	12314	1384	3362
	45	10157	12044	1354	3370
	48	10115	11734	1329	3372
	50	10086	11556	1319	3362
	52.5	10040	11352	1312	3348
	55	9962	11147	1310	3319
	60	9808	10832	1313	3274
	65	9702	10651	1341	3223
	70	9640	10550	1384	3173
	75	9587	10518	1449	3116
	80	9607	10615	1556	3072
	85	9633	10745	1658	3009
90	9700	10946	1782	2963	
95	9790	11195	1925	2917	
100	9931	11524	2073	2879	
105	10046	11830	2181	2833	
110	10176	12157	2258	2791	
120	10489	12885	2369	2736	

	WUA (ft <sup>2</sup> /1000ft)				
	Q (cfs)	Holding	Juvenile	Larvae	Spawning
<b>Shorthead Sucker</b>	6	572	587	1436	5108
	8	627	613	1404	5932
	11.5	710	672	1424	6755
	15	780	710	1457	7220
	20	863	768	1505	7477
	25	936	831	1512	7391
	28.1	974	850	1491	7147
	30	998	874	1481	6999
	32.5	1025	907	1463	6758
	35	1050	939	1446	6523
	37.5	1071	969	1425	6342
	40	1090	1003	1404	6127
	42.5	1107	1028	1384	5935
	45	1123	1056	1354	5736
	48	1141	1086	1329	5522
	50	1151	1109	1319	5381
	52.5	1162	1133	1312	5211
	55	1172	1155	1310	5006
	60	1188	1205	1313	4616
	65	1195	1255	1341	4314
	70	1200	1305	1384	4018
	75	1204	1359	1449	3764
	80	1207	1428	1556	3562
	85	1208	1494	1658	3344
90	1207	1562	1782	3149	
95	1202	1632	1925	2988	
100	1190	1709	2073	2853	
105	1174	1773	2181	2746	
110	1153	1837	2258	2662	
120	1104	1959	2369	2521	

	WUA (ft <sup>2</sup> /1000ft)				
	Q (cfs)	Holding	Juvenile	Larvae	Spawning
<b>Lost River Sucker</b>	6	1718	587	1436	1663
	8	1818	613	1404	2088
	11.5	1957	672	1424	2629
	15	2052	710	1457	3049
	20	2120	768	1505	3493
	25	2138	831	1512	3742
	28.1	2146	850	1491	3843
	30	2150	874	1481	3886
	32.5	2156	907	1463	3926
	35	2159	939	1446	3947
	37.5	2162	969	1425	3963
	40	2165	1003	1404	3961
	42.5	2166	1028	1384	3952
	45	2166	1056	1354	3930
	48	2167	1086	1329	3899
	50	2167	1109	1319	3872
	52.5	2168	1133	1312	3841
	55	2168	1155	1310	3802
	60	2170	1205	1313	3714
	65	2172	1255	1341	3620
	70	2174	1305	1384	3519
	75	2175	1359	1449	3413
	80	2178	1428	1556	3315
	85	2177	1494	1658	3213
90	2171	1562	1782	3114	
95	2159	1632	1925	3012	
100	2137	1709	2073	2918	
105	2103	1773	2181	2817	
110	2061	1837	2258	2723	
120	1962	1959	2369	2550	

	WUA (ft <sup>2</sup> /1000ft)				
	Q (cfs)	Adult	Juvenile	Fry	Spawning
<b>Winter Rainbow Trout</b>	6	664	2719		
	8	822	3160		
	11.5	1104	3795		
	15	1344	4203		
	20	1596	4496		
	25	1750	4510		
	28.1	1787	4380		
	30	1823	4349		
	32.5	1859	4303		
	35	1874	4231		
	37.5	1871	4138		
	40	1860	4053		
	42.5	1833	3946		
	45	1807	3847		
	48	1783	3724		
	50	1767	3645		
	52.5	1735	3541		
	55	1698	3429		
	60	1628	3203		
	65	1570	2995		
	70	1513	2817		
	75	1457	2649		
	80	1404	2506		
	85	1343	2376		
90	1287	2261			
95	1223	2154			
100	1175	2068			
105	1130	1983			
110	1084	1902			
120	1000	1765			