

7-27-2009

Ex. 279-US-450

Unknown

Follow this and additional works at: <https://digitalcommons.law.uidaho.edu/all>

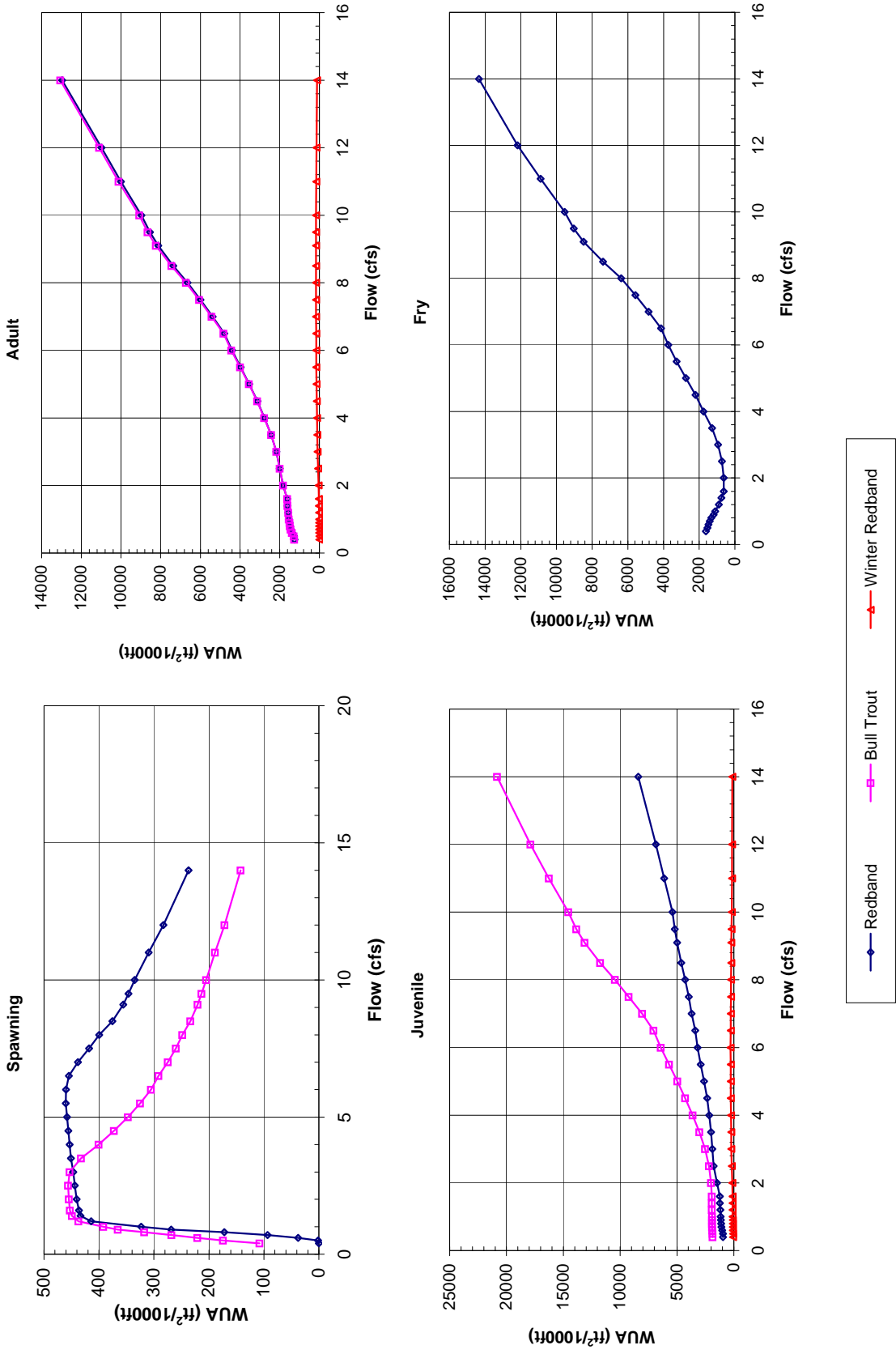
---

### Recommended Citation

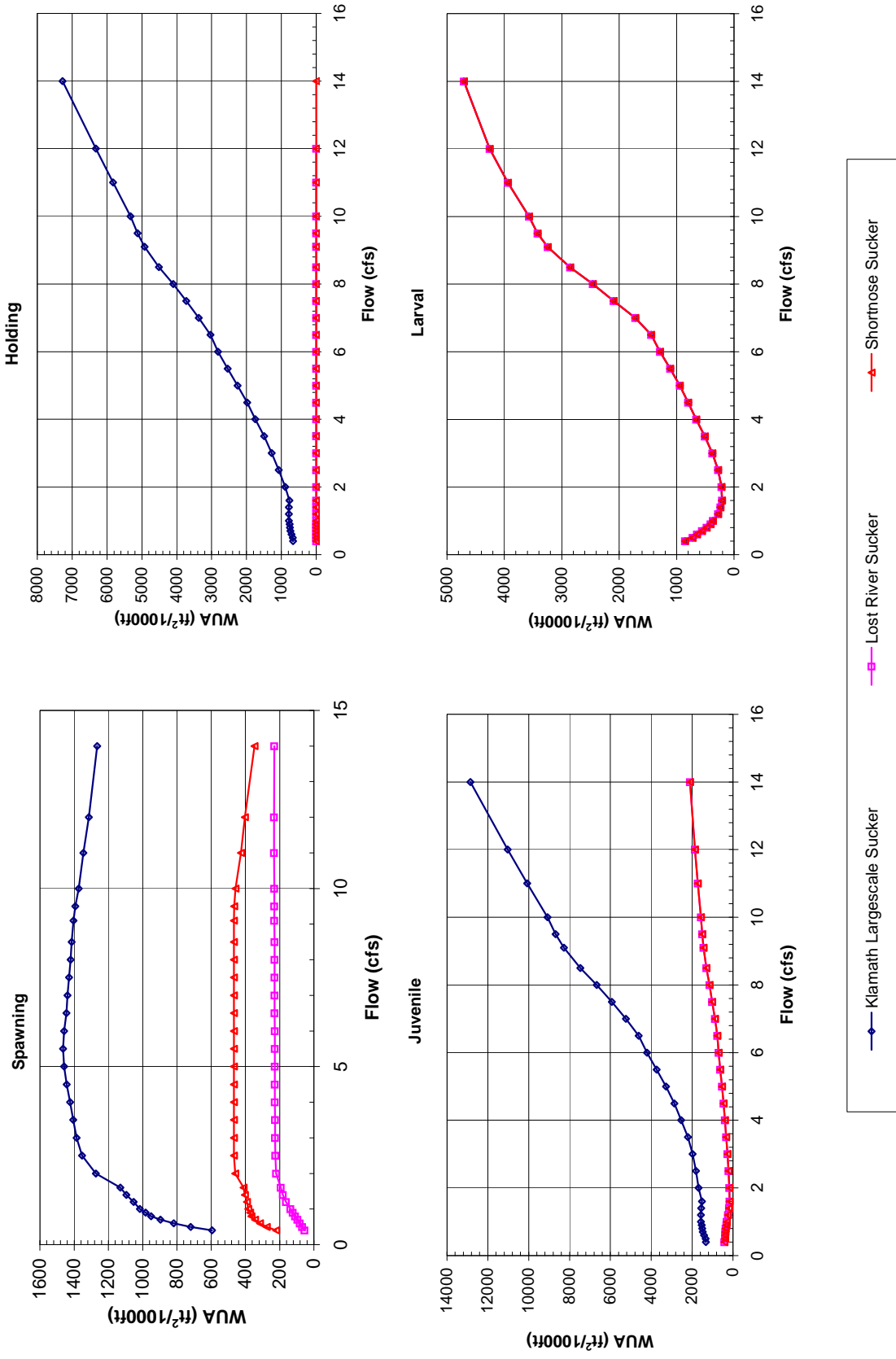
Unknown, "Ex. 279-US-450" (2009). *Hedden-Nicely Collection, All*. 437.  
<https://digitalcommons.law.uidaho.edu/all/437>

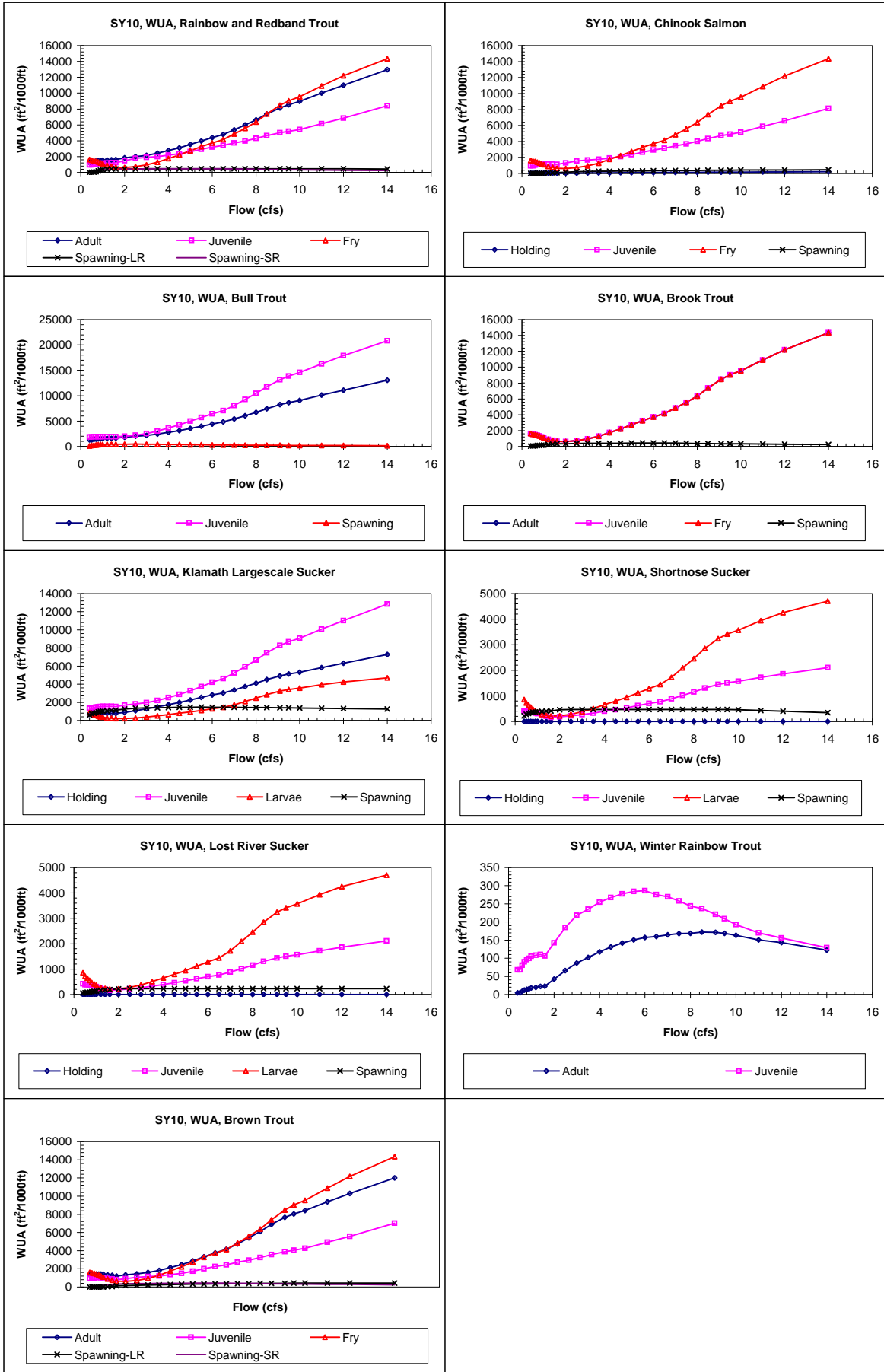
This Expert Report is brought to you for free and open access by the Hedden-Nicely at Digital Commons @ UIdaho Law. It has been accepted for inclusion in Hedden-Nicely Collection, All by an authorized administrator of Digital Commons @ UIdaho Law. For more information, please contact [annablaine@uidaho.edu](mailto:annablaine@uidaho.edu).

**Site SY 10  
Priority Species Habitat - Flow Curves**



Site SY 10  
Priority Species Habitat - Flow Curves





**Claim Reach 667 Sycan River, Site 10, Composite WUA**

	Q (cfs)	WUA (ft <sup>2</sup> /1000ft)				
		Adult	Juvenile	Fry	Spawning -	
					Large River	Small River
Rainbow and Redband Trout	0.4	1260	946	1620	0	0
	0.5	1284	951	1544	1	1
	0.6	1371	1026	1488	38	38
	0.7	1438	1083	1413	93	93
	0.8	1480	1116	1314	172	172
	0.9	1504	1135	1197	269	269
	1	1543	1173	1101	323	323
	1.2	1567	1192	896	414	414
	1.4	1601	1225	757	433	433
	1.6	1619	1237	630	436	436
	2	1831	1489	619	441	441
	2.5	1993	1772	724	444	444
	3	2164	1902	948	447	447
	3.5	2423	1994	1277	451	451
	4	2765	2167	1756	453	453
	4.5	3115	2357	2214	456	456
	5	3535	2614	2739	458	458
	5.5	3970	2921	3266	460	460
	6	4402	3189	3726	462	460
	6.5	4791	3398	4132	466	455
	7	5385	3704	4838	467	438
	7.5	5989	3970	5573	467	418
	8	6645	4287	6367	467	400
	8.5	7361	4630	7386	467	376
	9.1	8124	4990	8477	467	356
	9.5	8539	5188	9028	466	346
	10	8967	5412	9542	464	335
	11	10002	6140	10891	453	310
	12	10985	6854	12177	446	283
	14	12963	8406	14346	426	237

	Q (cfs)	WUA (ft <sup>2</sup> /1000ft)			
		Holding	Juvenile	Fry	Spawning
Chinook Salmon	0.4	23	946	1620	0
	0.5	23	951	1544	0
	0.6	25	1026	1488	0
	0.7	26	1083	1413	0
	0.8	27	1116	1314	4
	0.9	27	1135	1197	12
	1	28	1168	1101	21
	1.2	29	1160	896	47
	1.4	29	1152	757	75
	1.6	30	1119	630	106
	2	36	1323	619	162
	2.5	45	1567	724	216
	3	53	1679	948	238
	3.5	61	1758	1277	261
	4	69	1923	1756	276
	4.5	77	2106	2214	290
	5	85	2357	2739	304
	5.5	94	2659	3266	317
	6	101	2922	3726	331
	6.5	108	3127	4132	351
	7	115	3431	4838	361
	7.5	122	3695	5573	371
	8	130	4013	6367	381
	8.5	138	4355	7386	385
	9.1	146	4716	8477	395
	9.5	150	4916	9028	403
	10	156	5143	9542	413
	11	171	5875	10891	429
	12	185	6590	12177	436
	14	216	8136	14346	443

	Q (cfs)	WUA (ft <sup>2</sup> /1000ft)			
		Adult	Juvenile	Fry	Spawning
Bull Trout	0.4	1272	1879	108	
	0.5	1293	1880	174	
	0.6	1378	1899	221	
	0.7	1444	1909	268	
	0.8	1484	1915	318	
	0.9	1507	1918	366	
	1	1547	1925	392	
	1.2	1570	1929	437	
	1.4	1603	1936	449	
	1.6	1622	1939	453	
	2	1834	1999	455	
	2.5	1998	2184	456	
	3	2172	2526	453	
	3.5	2434	3020	432	
	4	2778	3635	400	
	4.5	3131	4277	373	
	5	3553	4969	347	
	5.5	3996	5699	325	
	6	4437	6426	305	
	6.5	4834	7076	292	
	7	5435	8069	275	
	7.5	6058	9247	260	
	8	6730	10459	248	
	8.5	7461	11754	234	
	9.1	8235	13126	221	
	9.5	8653	13848	213	
	10	9082	14563	205	
	11	10116	16269	189	
	12	11101	17897	172	
	14	13064	20836	142	

	Q (cfs)	WUA (ft <sup>2</sup> /1000ft)			
		Adult	Juvenile	Fry	Spawning
Brook Trout	0.4	1620	1620	1620	39
	0.5	1544	1544	1544	70
	0.6	1488	1488	1488	92
	0.7	1413	1413	1413	114
	0.8	1314	1314	1314	137
	0.9	1197	1197	1197	163
	1	1101	1101	1101	184
	1.2	896	896	896	235
	1.4	757	757	757	280
	1.6	630	630	630	328
	2	619	619	619	352
	2.5	724	724	724	371
	3	948	948	948	384
	3.5	1277	1277	1277	399
	4	1756	1756	1756	407
	4.5	2214	2214	2214	414
	5	2739	2739	2739	421
	5.5	3266	3266	3266	427
	6	3726	3726	3726	430
	6.5	4132	4132	4132	428
	7	4838	4838	4838	415
	7.5	5573	5573	5573	399
	8	6367	6367	6367	382
	8.5	7386	7386	7386	360
	9.1	8477	8477	8477	343
	9.5	9028	9028	9028	334
	10	9542	9542	9542	326
	11	10891	10891	10891	308
	12	12177	12177	12177	286
	14	14346	14346	14346	251

Claim Reach 667 Sycan River, Site 10, Composite WUA

	Q (cfs)	WUA (ft <sup>2</sup> /1000ft)			
		Holding	Juvenile	Larvae	Spawning
Klamath Largescale Sucker	0.4	666	1332	853	595
	0.5	669	1338	724	720
	0.6	708	1417	645	819
	0.7	738	1475	558	897
	0.8	756	1508	474	951
	0.9	766	1527	411	983
	1	786	1563	367	1016
	1.2	788	1564	279	1053
	1.4	786	1556	236	1095
	1.6	771	1519	208	1130
	2	892	1682	220	1272
	2.5	1076	1815	279	1353
	3	1279	1971	378	1385
	3.5	1496	2207	507	1405
4	1750	2533	656	1424	
4.5	1981	2865	798	1443	
5	2256	3283	943	1459	
5.5	2542	3741	1111	1465	
6	2813	4206	1287	1459	
6.5	3031	4610	1443	1445	
7	3370	5237	1721	1438	
7.5	3728	5933	2095	1429	
8	4104	6668	2461	1421	
8.5	4513	7466	2854	1414	
9.1	4921	8271	3242	1404	
9.5	5127	8679	3421	1393	
10	5325	9079	3569	1374	
11	5828	10068	3939	1346	
12	6320	11030	4255	1313	
14	7278	12856	4703	1265	

	Q (cfs)	WUA (ft <sup>2</sup> /1000ft)			
		Holding	Juvenile	Larvae	Spawning
Shortnose Sucker	0.4	0	420	853	220
	0.5	0	387	724	275
	0.6	0	385	645	314
	0.7	0	374	558	344
	0.8	0	352	474	365
	0.9	0	325	411	372
	1	0	306	367	383
	1.2	0	243	279	391
	1.4	0	197	236	403
	1.6	0	164	208	410
	2	0	179	220	460
	2.5	0	220	279	467
	3	0	269	378	467
	3.5	0	326	507	467
4	0	398	656	467	
4.5	0	460	798	467	
5	0	536	943	467	
5.5	0	621	1111	467	
6	0	702	1287	467	
6.5	0	769	1443	467	
7	0	883	1721	467	
7.5	0	1017	2095	467	
8	0	1153	2461	467	
8.5	0	1301	2854	467	
9.1	0	1444	3242	467	
9.5	0	1511	3421	466	
10	0	1568	3569	457	
11	0	1719	3939	426	
12	0	1858	4255	404	
14	0	2107	4703	346	

	Q (cfs)	WUA (ft <sup>2</sup> /1000ft)			
		Holding	Juvenile	Larvae	Spawning
Lost River Sucker	0.4	0	420	853	55
	0.5	0	387	724	69
	0.6	0	385	645	82
	0.7	0	374	558	96
	0.8	0	352	474	110
	0.9	0	325	411	123
	1	0	306	367	137
	1.2	0	243	279	163
	1.4	0	197	236	181
	1.6	0	164	208	194
	2	0	179	220	221
	2.5	0	220	279	226
	3	0	269	378	227
	3.5	0	326	507	227
4	0	398	656	228	
4.5	0	460	798	228	
5	0	536	943	228	
5.5	0	621	1111	228	
6	0	702	1287	229	
6.5	0	769	1443	229	
7	0	883	1721	229	
7.5	0	1017	2095	230	
8	0	1153	2461	230	
8.5	0	1301	2854	230	
9.1	0	1444	3242	230	
9.5	0	1511	3421	231	
10	0	1568	3569	231	
11	0	1719	3939	232	
12	0	1858	4255	233	
14	0	2107	4703	231	

	Q (cfs)	WUA (ft <sup>2</sup> /1000ft)			
		Adult	Juvenile	Fry	Spawning
Winter Rainbow Trout	0.4	5	68		
	0.5	5	68		
	0.6	9	80		
	0.7	12	90		
	0.8	14	96		
	0.9	15	99		
	1	18	105		
	1.2	19	108		
	1.4	22	110		
	1.6	23	106		
	2	43	143		
	2.5	66	185		
	3	87	218		
	3.5	102	235		
4	118	255			
4.5	131	267			
5	142	278			
5.5	151	284			
6	157	286			
6.5	160	275			
7	165	269			
7.5	168	258			
8	168	244			
8.5	172	237			
9.1	171	221			
9.5	169	209			
10	163	193			
11	150	170			
12	143	156			
14	122	129			