

12-4-2009

Ex. 280-US-432

Unknown

Follow this and additional works at: <https://digitalcommons.law.uidaho.edu/all>

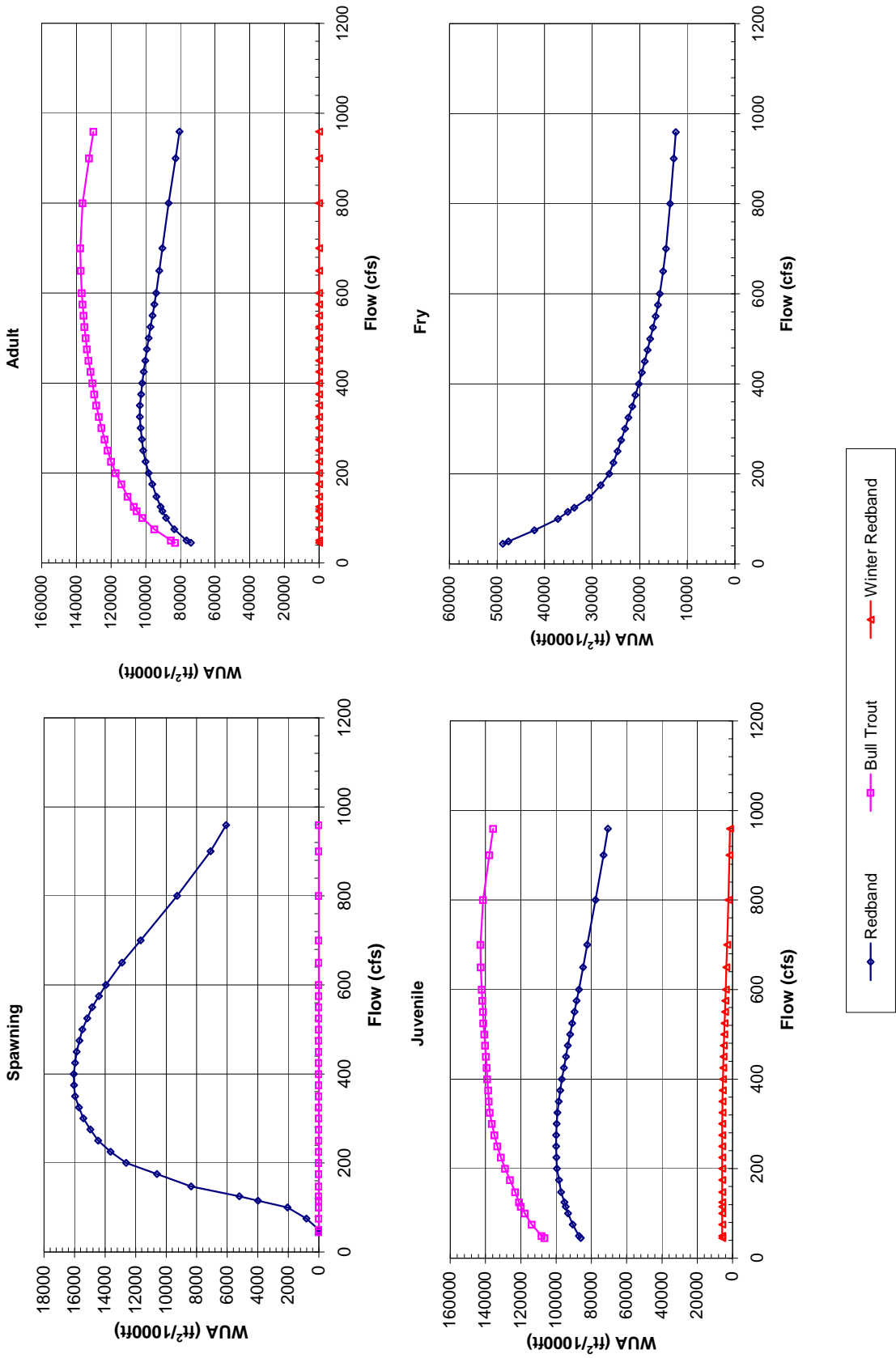
---

### Recommended Citation

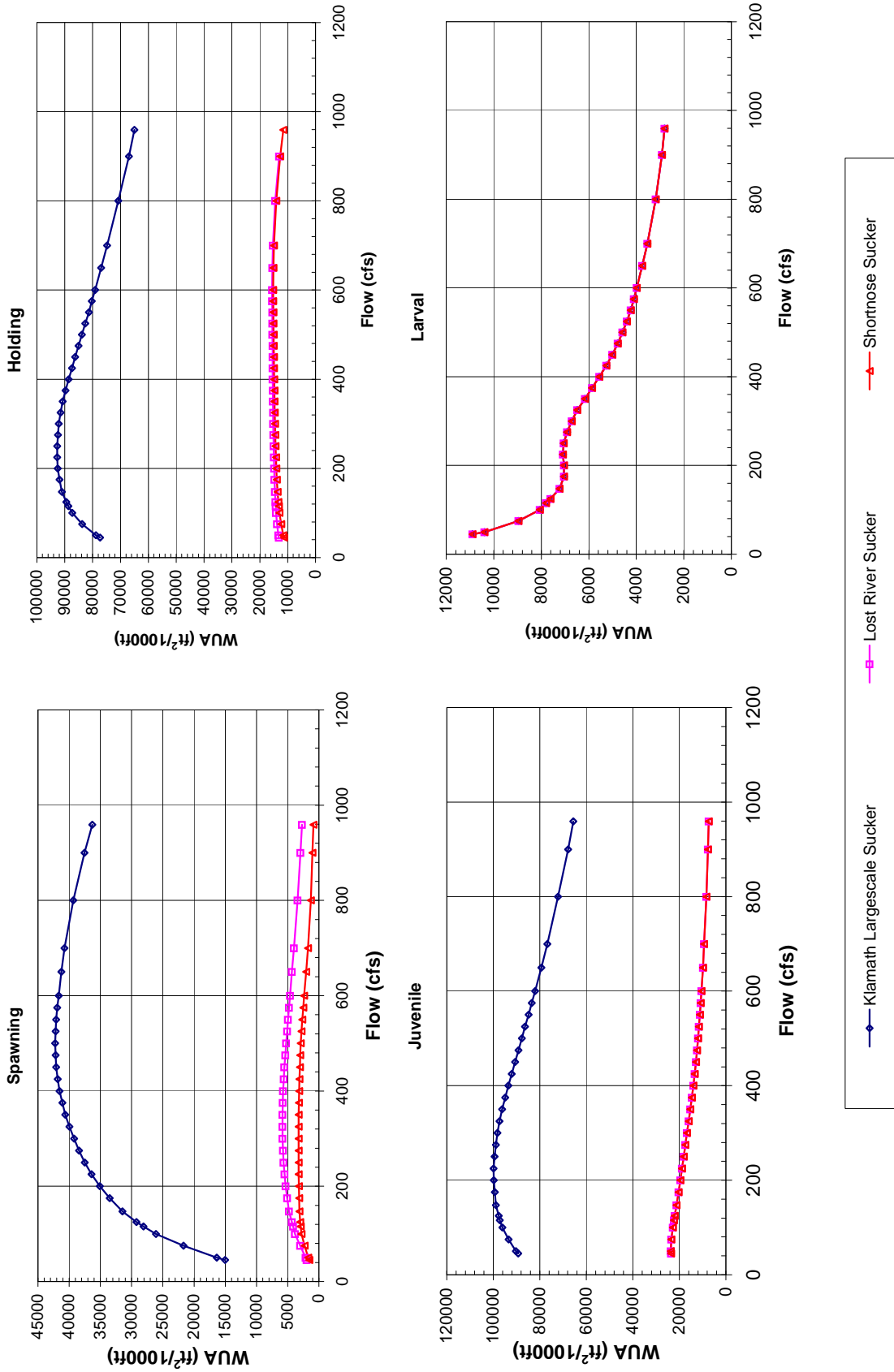
Unknown, "Ex. 280-US-432" (2009). *Hedden-Nicely Collection, All*. 470.  
<https://digitalcommons.law.uidaho.edu/all/470>

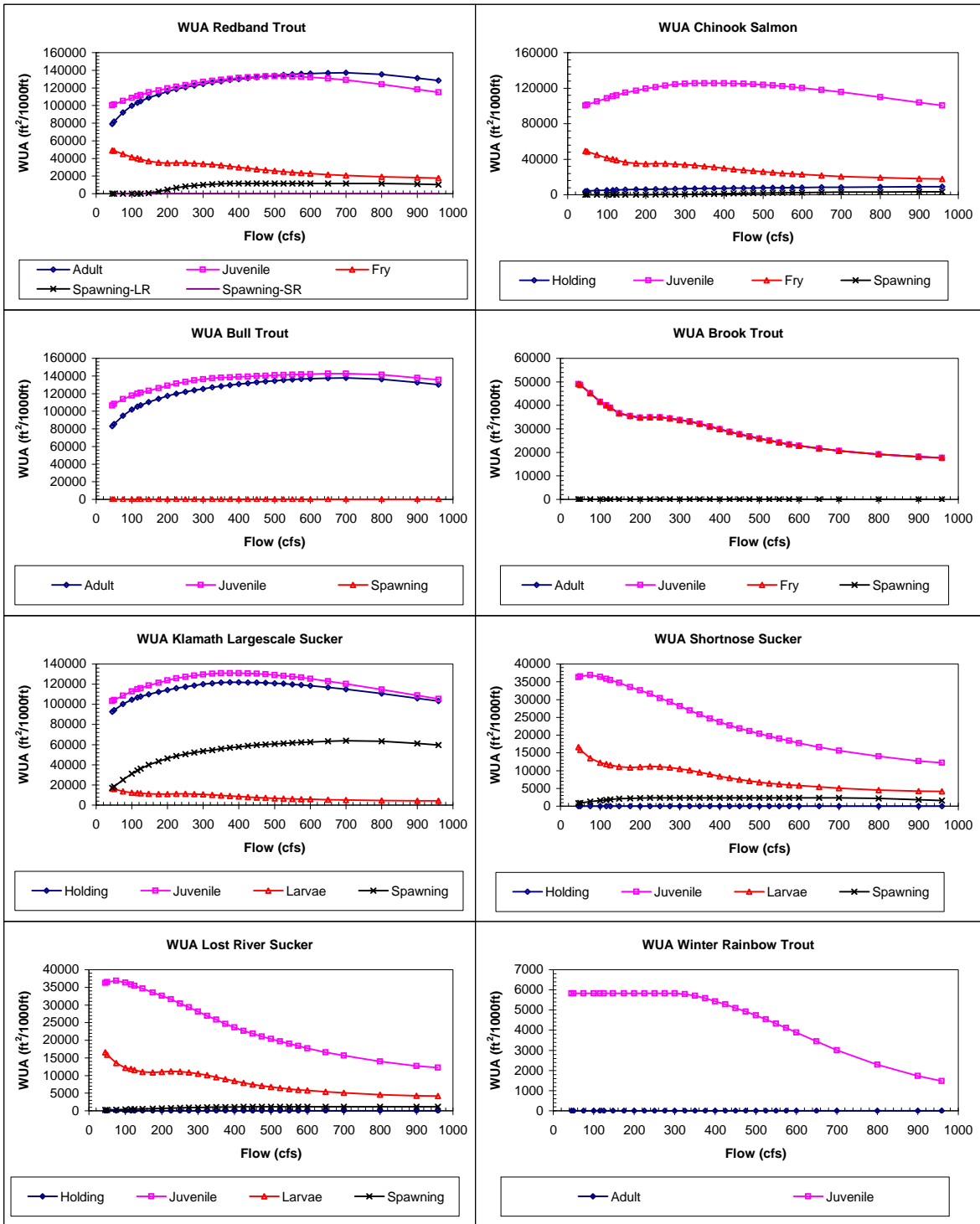
This Expert Report is brought to you for free and open access by the Hedden-Nicely at Digital Commons @ UIdaho Law. It has been accepted for inclusion in Hedden-Nicely Collection, All by an authorized administrator of Digital Commons @ UIdaho Law. For more information, please contact [annablaine@uidaho.edu](mailto:annablaine@uidaho.edu).

Site 643  
Priority Species Habitat - Flow Curves



Site 643  
Priority Species Habitat - Flow Curves





**Spragur River, 643, WUA**

	WUA (ft <sup>2</sup> /1000ft)				
	Q	Spawning - Spawning -			
	(cfs)	Adult	Juvenile	Fry	Large River Small River
45	73893	85987	48786	0	0
50	76453	87093	47562	0	0
75	83485	90504	42147	817	209
100	88242	93173	37209	2051	572
115.4	90312	94510	35136	3994	1914
125	91415	95295	33769	5205	2751
147.4	93859	97181	30594	8360	4703
175	96246	98340	28230	10609	5401
200	98361	99526	26409	12624	5873
225	100043	99773	25531	13643	5701
250	101368	99994	24638	14451	5529
275	102200	99968	23899	14965	5405
300	102964	99687	23061	15417	5281
325	103366	99166	22384	15705	5148
350	103319	98495	21586	15957	5023
375	102686	97601	20889	16036	4876
400	101999	96693	20203	16056	4730
425	101109	95529	19552	15963	4594
450	100245	94418	18927	15871	4458
475	99297	93313	18333	15683	4273
500	98271	92083	17777	15496	4088
525	97203	90876	17208	15173	3816
550	96050	89513	16641	14851	3543
575	95066	88331	16164	14395	3266
600	93966	86994	15784	13940	2988
650	92116	84693	15107	12901	2338
700	90370	82376	14466	11669	1654
800	86728	77697	13601	9274	561
900	82725	73085	12832	7097	167
959.1	80505	70649	12421	6069	72

	WUA (ft <sup>2</sup> /1000ft)			
	Q	Spawning		
	(cfs)	Holding	Juvenile	Fry
45	4074	100474	49074	0
50	4194	101355	48651	0
75	4693	105141	45125	0
100	5076	108725	41493	0
115.4	5277	110824	40079	0
125	5386	112035	39045	0
147.4	5639	114971	36667	0
175	5891	117156	35425	0
200	6119	119456	34811	54
225	6315	121153	34887	155
250	6487	122724	34935	274
275	6658	124287	34452	411
300	6820	125079	33772	556
325	6967	125436	33212	711
350	7109	125600	32115	877
375	7233	125605	30977	1044
400	7360	125586	29862	1207
425	7463	125147	28792	1372
450	7581	124896	27775	1527
475	7689	124360	26801	1686
500	7792	123764	25902	1841
525	7896	123182	25040	1993
550	7979	122171	24182	2150
575	8083	121324	23411	2296
600	8166	120231	22832	2449
650	8334	118007	21711	2705
700	8495	115597	20647	2902
800	8786	109871	19177	3160
900	9016	103776	18155	3332
959.1	9169	100572	17710	3407

	WUA (ft <sup>2</sup> /1000ft)			
	Q	Spawning		
	(cfs)	Adult	Juvenile	Fry
45	83002	106575	0	0
50	85475	108191	0	0
75	94981	113767	0	0
100	101874	117723	0	0
115.4	105114	119950	0	0
125	106762	120992	0	0
147.4	110411	123193	0	0
175	114050	126102	0	0
200	117322	128840	0	0
225	119954	131289	0	0
250	121875	133335	0	0
275	123737	134962	0	0
300	125471	136316	0	0
325	127028	137497	0	0
350	128442	138063	0	0
375	129660	138490	0	0
400	130791	138955	0	0
425	131818	139325	0	0
450	132895	139781	0	0
475	133805	140231	0	0
500	134577	140690	0	0
525	135293	141139	0	0
550	135851	141420	0	0
575	136439	141796	0	0
600	136795	142118	0	0
650	137444	142648	0	0
700	137776	142784	0	0
800	136355	141327	0	0
900	132665	137811	0	0
959.1	130191	135568	0	0

	WUA (ft <sup>2</sup> /1000ft)			
	Q	Spawning		
	(cfs)	Adult	Juvenile	Fry
45	49074	49074	49074	0
50	48651	48651	48651	0
75	45125	45125	45125	3
100	41493	41493	41493	6
115.4	40079	40079	40079	7
125	39045	39045	39045	7
147.4	36667	36667	36667	6
175	35425	35425	35425	4
200	34811	34811	34811	2
225	34887	34887	34887	1
250	34935	34935	34935	0
275	34452	34452	34452	0
300	33772	33772	33772	0
325	33212	33212	33212	0
350	32115	32115	32115	0
375	30977	30977	30977	0
400	29862	29862	29862	0
425	28792	28792	28792	0
450	27775	27775	27775	0
475	26801	26801	26801	0
500	25902	25902	25902	0
525	25040	25040	25040	0
550	24182	24182	24182	0
575	23411	23411	23411	0
600	22832	22832	22832	0
650	21711	21711	21711	0
700	20647	20647	20647	0
800	19177	19177	19177	0
900	18155	18155	18155	0
959.1	17710	17710	17710	0

**Spragur River, 643, WUA**

	Q (cfs)	WUA (ft <sup>2</sup> /1000ft)			
		Holding	Juvenile	Larvae	Spawning
Klamath Largescale Sucker	45	77305	89296	10892	15026
	50	78813	90297	10396	16369
	75	83739	93403	8959	21708
	100	87344	96080	8066	26091
	115.4	88724	97170	7804	28100
	125	89453	97671	7615	29209
	147.4	91018	98890	7230	31463
	175	91888	99378	7043	33509
	200	92559	99827	7048	35099
	225	92750	99854	7086	36428
	250	92739	99461	7056	37489
	275	92469	98869	6912	38405
	300	92118	98197	6714	39193
	325	91534	97285	6483	39945
	350	90804	96217	6162	40609
	375	89773	94914	5859	41091
	400	88650	93532	5559	41527
	425	87417	92066	5262	41824
	450	86243	90628	5005	42077
	475	85052	89189	4784	42185
500	83837	87702	4580	42236	
525	82683	86323	4397	42174	
550	81388	84818	4229	42081	
575	80326	83506	4098	41901	
600	79131	82006	3981	41683	
650	76994	79339	3757	41262	
700	74845	76802	3529	40744	
800	70830	72142	3185	39340	
900	67001	67816	2917	37536	
959.1	65043	65618	2809	36288	

	Q (cfs)	WUA (ft <sup>2</sup> /1000ft)			
		Holding	Juvenile	Larvae	Spawning
Shortnose Sucker	45	11251	23568	10892	1534
	50	11551	23632	10396	1688
	75	12344	23474	8959	2303
	100	12953	22827	8066	2804
	115.4	13171	22326	7804	2914
	125	13308	21993	7615	2982
	147.4	13626	21246	7230	3103
	175	13854	20329	7043	3170
	200	14045	19599	7048	3206
	225	14184	18919	7086	3226
	250	14324	18153	7056	3233
	275	14432	17461	6912	3233
	300	14541	16718	6714	3233
	325	14629	16004	6483	3233
	350	14704	15328	6162	3233
	375	14773	14636	5859	3200
	400	14841	14015	5559	3167
	425	14901	13420	5262	3111
	450	14960	12903	5005	3056
	475	15008	12442	4784	2976
500	15056	12000	4580	2897	
525	15096	11623	4397	2780	
550	15136	11217	4229	2662	
575	15177	10881	4098	2518	
600	15217	10524	3981	2373	
650	15153	9883	3757	2059	
700	14961	9330	3529	1761	
800	14092	8423	3185	1307	
900	12655	7674	2917	1039	
959.1	11599	7364	2809	882	

	Q (cfs)	WUA (ft <sup>2</sup> /1000ft)			
		Holding	Juvenile	Larvae	Spawning
Lost River Sucker	45	13135	23568	10892	1942
	50	13305	23632	10396	2134
	75	13770	23474	8959	2999
	100	14133	22827	8066	3812
	115.4	14277	22326	7804	4132
	125	14366	21993	7615	4332
	147.4	14576	21246	7230	4797
	175	14708	20329	7043	5098
	200	14815	19599	7048	5344
	225	14912	18919	7086	5496
	250	15009	18153	7056	5647
	275	15094	17461	6912	5729
	300	15179	16718	6714	5811
	325	15236	16004	6483	5844
	350	15286	15328	6162	5846
	375	15321	14636	5859	5798
	400	15357	14015	5559	5745
	425	15378	13420	5262	5637
	450	15400	12903	5005	5525
	475	15427	12442	4784	5386
500	15454	12000	4580	5246	
525	15484	11623	4397	5095	
550	15515	11217	4229	4944	
575	15548	10881	4098	4789	
600	15582	10524	3981	4634	
650	15508	9883	3757	4311	
700	15311	9330	3529	4009	
800	14447	8423	3185	3429	
900	13025	7674	2917	2948	
959.1	11996	7364	2809	2708	

	Q (cfs)	WUA (ft <sup>2</sup> /1000ft)			
		Adult	Juvenile	Fry	Spawning
Winter Rainbow Trout	45	0	5833		
	50	0	5833		
	75	0	5833		
	100	0	5833		
	115.4	0	5833		
	125	0	5833		
	147.4	0	5833		
	175	0	5833		
	200	0	5833		
	225	0	5833		
	250	0	5833		
	275	0	5833		
	300	0	5833		
	325	0	5792		
	350	0	5709		
	375	0	5588		
	400	0	5434		
	425	0	5278		
	450	0	5103		
	475	0	4922		
500	0	4735			
525	0	4535			
550	0	4327			
575	0	4115			
600	0	3889			
650	0	3450			
700	0	3010			
800	0	2285			
900	0	1724			
959.1	0	1474			