

12-4-2009

Ex. 280-US-460

Unknown

Follow this and additional works at: <https://digitalcommons.law.uidaho.edu/all>

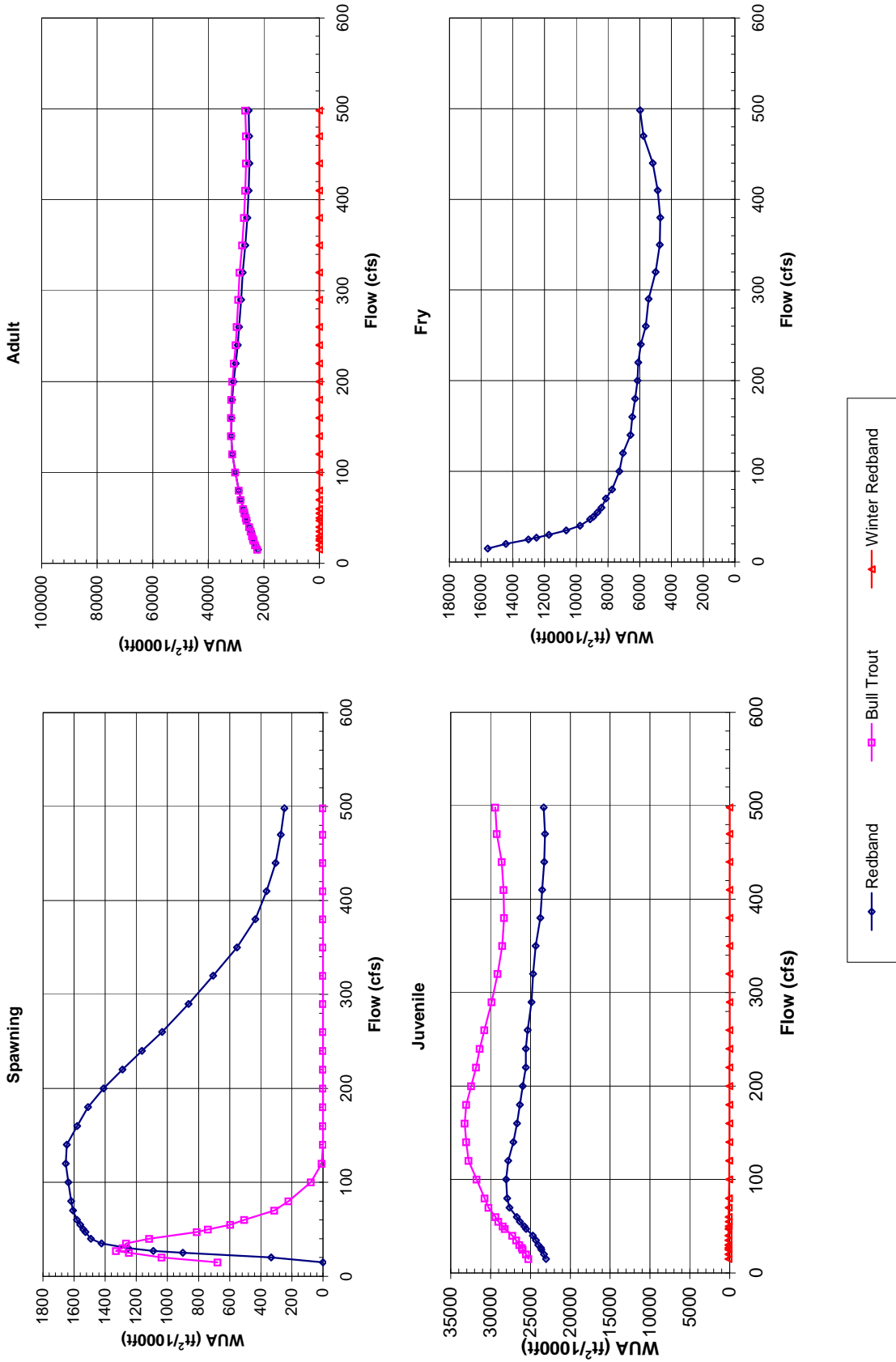
---

### Recommended Citation

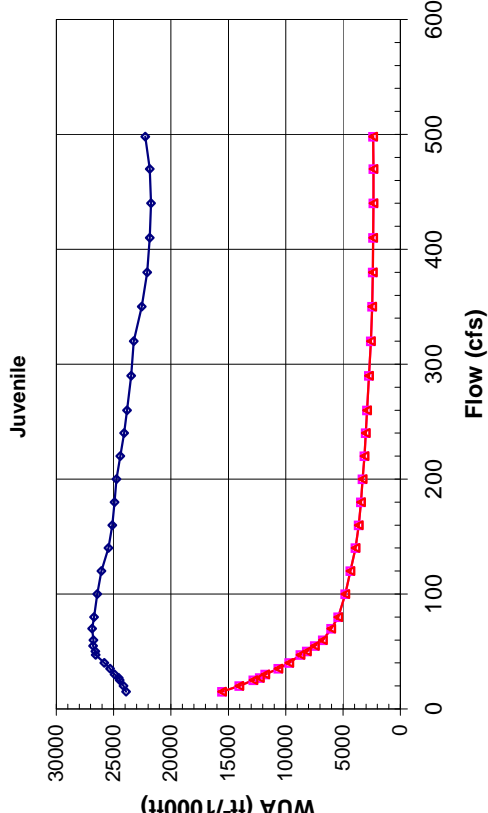
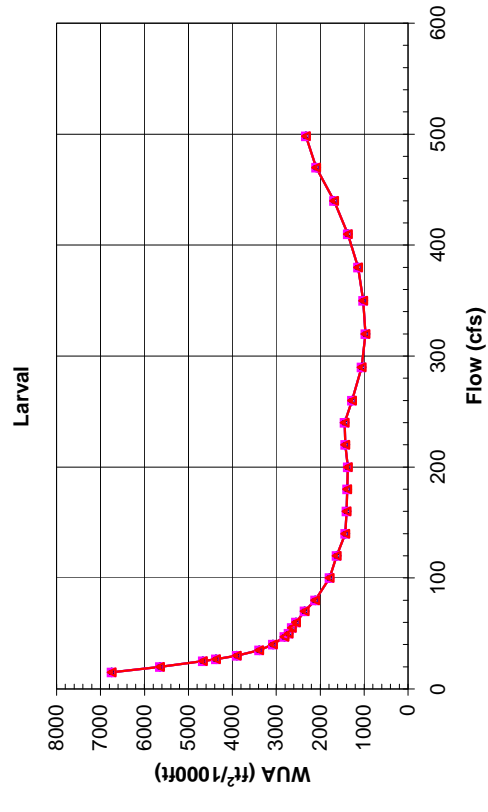
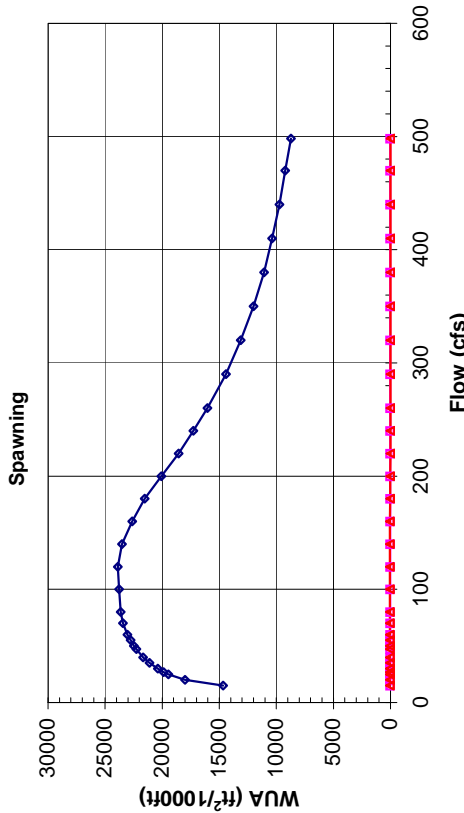
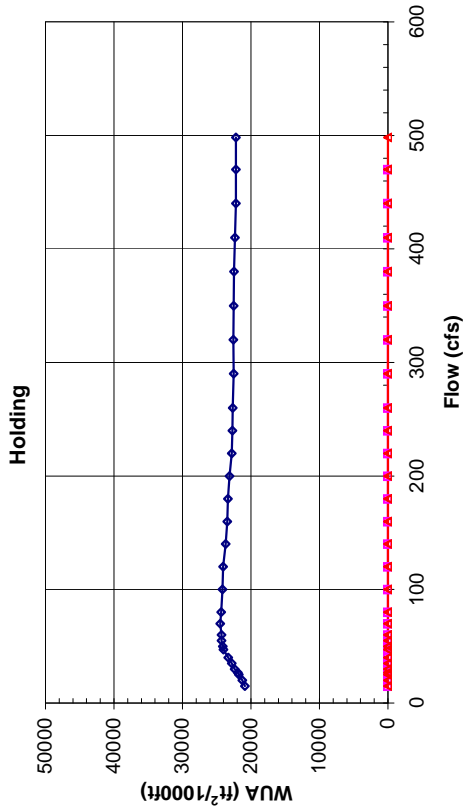
Unknown, "Ex. 280-US-460" (2009). *Hedden-Nicely Collection, All*. 498.  
<https://digitalcommons.law.uidaho.edu/all/498>

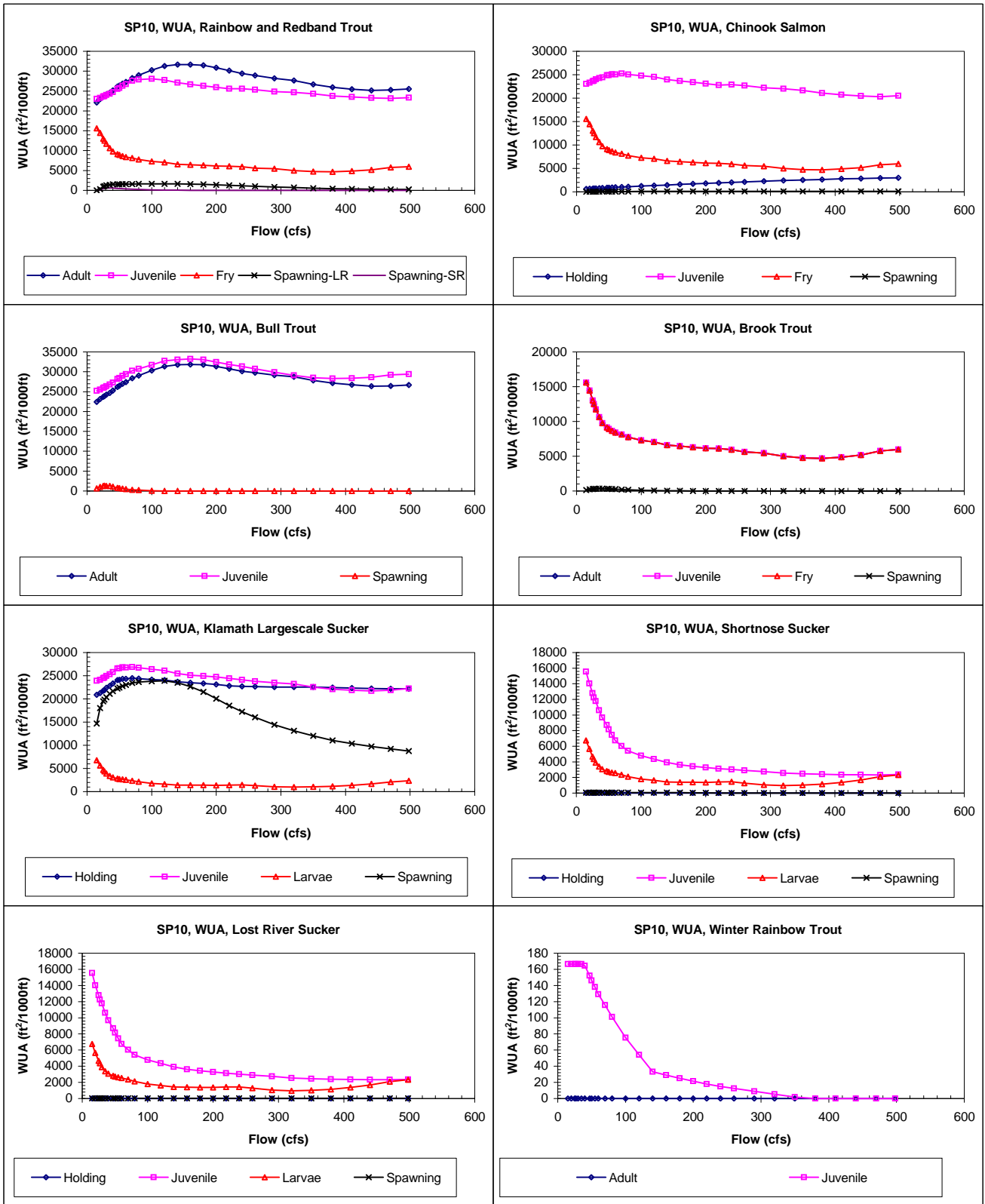
This Expert Report is brought to you for free and open access by the Hedden-Nicely at Digital Commons @ UIdaho Law. It has been accepted for inclusion in Hedden-Nicely Collection, All by an authorized administrator of Digital Commons @ UIdaho Law. For more information, please contact [annablaine@uidaho.edu](mailto:annablaine@uidaho.edu).

**Site 650**  
**Priority Species Habitat - Flow Curves**



**Site 650**  
**Priority Species Habitat - Flow Curves**





Claim Reach 650 Sprague River, Site 10, Composite WUA (EA Field Data, Recalibrated in April, 2007)

	WUA (ft <sup>2</sup> /1000ft)				
	Q	Adult	Juvenile	Fry	Spawning - Sp - Small
	(cfs)			Large River	River
15	22122	23031	15587	0	0
20	22956	23286	14433	332	143
25	23567	23619	13019	901	427
27	23731	23702	12510	1090	535
30	24101	24017	11725	1253	588
35	24568	24310	10631	1424	637
40	25143	24701	9762	1492	598
47	26101	25531	9132	1526	486
50	26367	25761	8917	1540	461
55	26880	26313	8654	1560	406
60	27294	26725	8407	1581	371
70	28286	27610	8142	1607	276
80	28977	27917	7748	1618	213
100	30257	28056	7281	1637	119
120	31299	27782	7055	1654	68
140	31679	27127	6584	1646	42
160	31663	26675	6465	1581	22
180	31454	26320	6291	1510	11
200	30898	25955	6141	1410	6
220	30124	25575	6097	1288	3
240	29399	25584	5935	1163	1
260	28899	25333	5616	1033	0
290	28186	24863	5444	864	0
320	27645	24672	4993	707	0
350	26683	24325	4743	553	0
380	25936	23769	4704	434	0
410	25488	23515	4875	363	0
440	25179	23283	5175	305	0
470	25260	23159	5758	272	0
498	25510	23338	5983	248	0

	WUA (ft <sup>2</sup> /1000ft)				
	Q	Holding	Juvenile	Fry	Spawning
	(cfs)				
15	639	23031	15587	0	
20	660	23286	14433	0	
25	693	23619	13019	8	
26.9	701	23702	12510	13	
30	734	24017	11725	17	
35	764	24260	10631	26	
40	802	24442	9762	34	
47.1	872	24903	9132	42	
50	890	24898	8917	46	
55	931	25080	8654	52	
60	962	25054	8407	58	
70	1045	25244	8142	67	
80	1107	25046	7748	77	
100	1232	24771	7281	94	
120	1354	24536	7055	100	
140	1461	23979	6584	100	
160	1573	23666	6465	100	
180	1685	23400	6291	100	
200	1789	23107	6141	100	
220	1885	22799	6097	100	
240	1994	22863	5935	100	
260	2102	22672	5616	100	
290	2260	22217	5444	100	
320	2410	22026	4993	100	
350	2537	21667	4743	100	
380	2655	21059	4704	100	
410	2762	20710	4875	100	
440	2850	20444	5175	100	
470	2918	20325	5758	92	
498.1	2968	20503	5983	82	

	WUA (ft <sup>2</sup> /1000ft)			
	Q	Adult	Juvenile	Spawning
	(cfs)			
15	22423	25246	677	
20	23153	25545	1037	
25	23720	25970	1247	
26.9	23871	26053	1330	
30	24238	26388	1287	
35	24690	26774	1266	
40	25260	27277	1117	
47.1	26218	28218	811	
50	26479	28464	739	
55	26983	29008	596	
60	27385	29383	507	
70	28349	30264	314	
80	29033	30727	222	
100	30310	31735	78	
120	31351	32751	8	
140	31768	33052	0	
160	31847	33230	0	
180	31760	33042	0	
200	31358	32435	0	
220	30746	31821	0	
240	30161	31375	0	
260	29773	30764	0	
290	29194	29874	0	
320	28737	29110	0	
350	27840	28521	0	
380	27144	28298	0	
410	26707	28377	0	
440	26394	28590	0	
470	26427	29206	0	
498.1	26651	29415	0	

	WUA (ft <sup>2</sup> /1000ft)				
	Q	Adult	Juvenile	Fry	Spawning
	(cfs)				
15	15587	15587	15587	143	
20	14433	14433	14433	234	
25	13019	13019	13019	293	
26.9	12510	12510	12510	317	
30	11725	11725	11725	321	
35	10631	10631	10631	351	
40	9762	9762	9762	353	
47.1	9132	9132	9132	314	
50	8917	8917	8917	309	
55	8654	8654	8654	285	
60	8407	8407	8407	272	
70	8142	8142	8142	217	
80	7748	7748	7748	180	
100	7281	7281	7281	109	
120	7055	7055	7055	64	
140	6584	6584	6584	40	
160	6465	6465	6465	22	
180	6291	6291	6291	11	
200	6141	6141	6141	7	
220	6097	6097	6097	4	
240	5935	5935	5935	1	
260	5616	5616	5616	0	
290	5444	5444	5444	0	
320	4993	4993	4993	0	
350	4743	4743	4743	0	
380	4704	4704	4704	0	
410	4875	4875	4875	0	
440	5175	5175	5175	0	
470	5758	5758	5758	0	
498.1	5983	5983	5983	0	

Claim Reach 650 Sprague River, Site 10, Composite WUA (EA Field Data, Recalibrated in April, 2007)

	Q (cfs)	WUA (ft <sup>2</sup> /1000ft)			
		Holding	Juvenile	Larvae	Spawning
Klamath Largescale Sucker	15	20895	23928	6748	14663
	20	21265	24136	5650	18004
	25	21780	24482	4673	19459
	26.9	21899	24567	4368	19870
	30	22383	24924	3899	20388
	35	22817	25300	3388	21117
	40	23327	25801	3071	21662
	47.1	24037	26555	2811	22264
	50	24093	26607	2716	22472
	55	24312	26802	2644	22758
	60	24303	26753	2554	23038
	70	24497	26879	2353	23431
	80	24352	26706	2111	23642
	100	24153	26431	1787	23782
	120	24056	26071	1627	23881
	140	23690	25445	1429	23513
	160	23466	25105	1401	22635
	180	23353	24933	1383	21533
	200	23141	24752	1370	20076
	220	22826	24419	1429	18564
	240	22712	24091	1444	17265
	260	22643	23822	1278	16037
	290	22543	23474	1055	14408
	320	22572	23254	971	13134
	350	22536	22553	1023	12008
	380	22454	22073	1136	11066
	410	22337	21860	1373	10388
	440	22215	21727	1683	9741
	470	22208	21862	2092	9213
	498.1	22204	22228	2322	8728

	Q (cfs)	WUA (ft <sup>2</sup> /1000ft)			
		Holding	Juvenile	Larvae	Spawning
Shorthose Sucker	15	0	15557	6748	63
	20	0	14032	5650	67
	25	0	12796	4673	67
	26.9	0	12257	4368	67
	30	0	11778	3899	67
	35	0	10619	3388	67
	40	0	9693	3071	67
	47.1	0	8711	2811	67
	50	0	8154	2716	67
	55	0	7453	2644	67
	60	0	6756	2554	67
	70	0	6035	2353	67
	80	0	5401	2111	67
	100	0	4799	1787	67
	120	0	4358	1627	67
	140	0	3917	1429	66
	160	0	3625	1401	51
	180	0	3438	1383	37
	200	0	3286	1370	24
	220	0	3127	1429	11
	240	0	3023	1444	6
	260	0	2907	1278	6
	290	0	2744	1055	6
	320	0	2556	971	5
	350	0	2461	1023	5
	380	0	2402	1136	4
	410	0	2360	1373	4
	440	0	2337	1683	3
	470	0	2331	2092	3
	498.1	0	2366	2322	3

	Q (cfs)	WUA (ft <sup>2</sup> /1000ft)			
		Holding	Juvenile	Larvae	Spawning
Lost River Sucker	15	0	15557	6748	16
	20	0	14032	5650	20
	25	0	12796	4673	24
	26.9	0	12257	4368	26
	30	0	11778	3899	28
	35	0	10619	3388	31
	40	0	9693	3071	33
	47.1	0	8711	2811	33
	50	0	8154	2716	33
	55	0	7453	2644	33
	60	0	6756	2554	33
	70	0	6035	2353	33
	80	0	5401	2111	33
	100	0	4799	1787	33
	120	0	4358	1627	33
	140	0	3917	1429	33
	160	0	3625	1401	33
	180	0	3438	1383	33
	200	0	3286	1370	32
	220	0	3127	1429	31
	240	0	3023	1444	29
	260	0	2907	1278	28
	290	0	2744	1055	27
	320	0	2556	971	25
	350	0	2461	1023	23
	380	0	2402	1136	22
	410	0	2360	1373	21
	440	0	2337	1683	19
	470	0	2331	2092	18
	498.1	0	2366	2322	17

	Q (cfs)	WUA (ft <sup>2</sup> /1000ft)			
		Adult	Juvenile	Fry	Spawning
Winter Rainbow Trout	15	0	167		
	20	0	167		
	25	0	167		
	26.9	0	167		
	30	0	167		
	35	0	167		
	40	0	164		
	47.1	0	152		
	50	0	146		
	55	0	138		
	60	0	129		
	70	0	116		
	80	0	101		
	100	0	75		
	120	0	54		
	140	0	33		
	160	0	29		
	180	0	25		
	200	0	21		
	220	0	18		
	240	0	15		
	260	0	12		
	290	0	9		
	320	0	5		
	350	0	2		
	380	0	0		
	410	0	0		
	440	0	0		
	470	0	0		
	498.1	0	0		