

12-4-2009

Ex. 280-US-467

Unknown

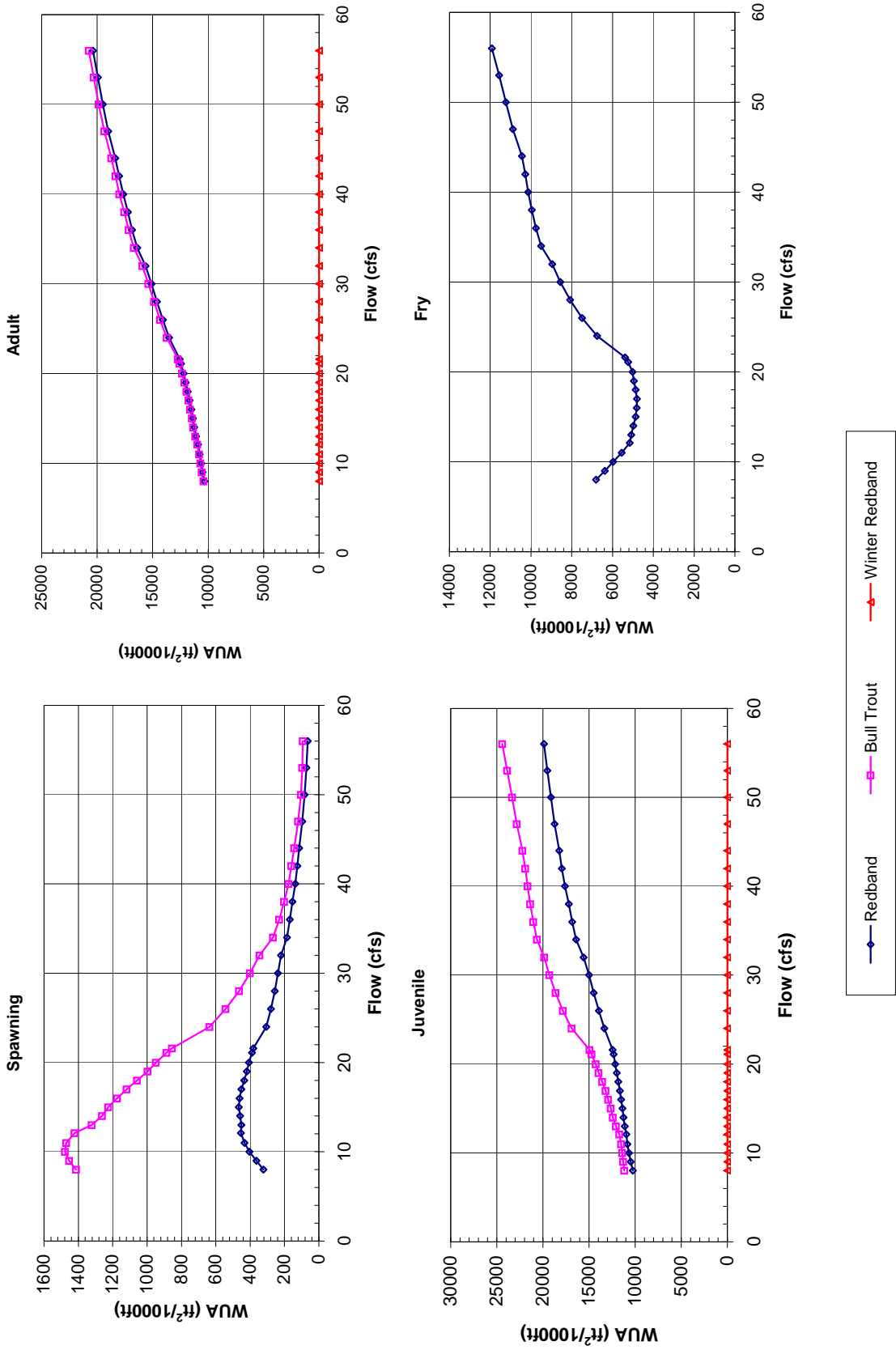
Follow this and additional works at: <https://digitalcommons.law.uidaho.edu/all>

Recommended Citation

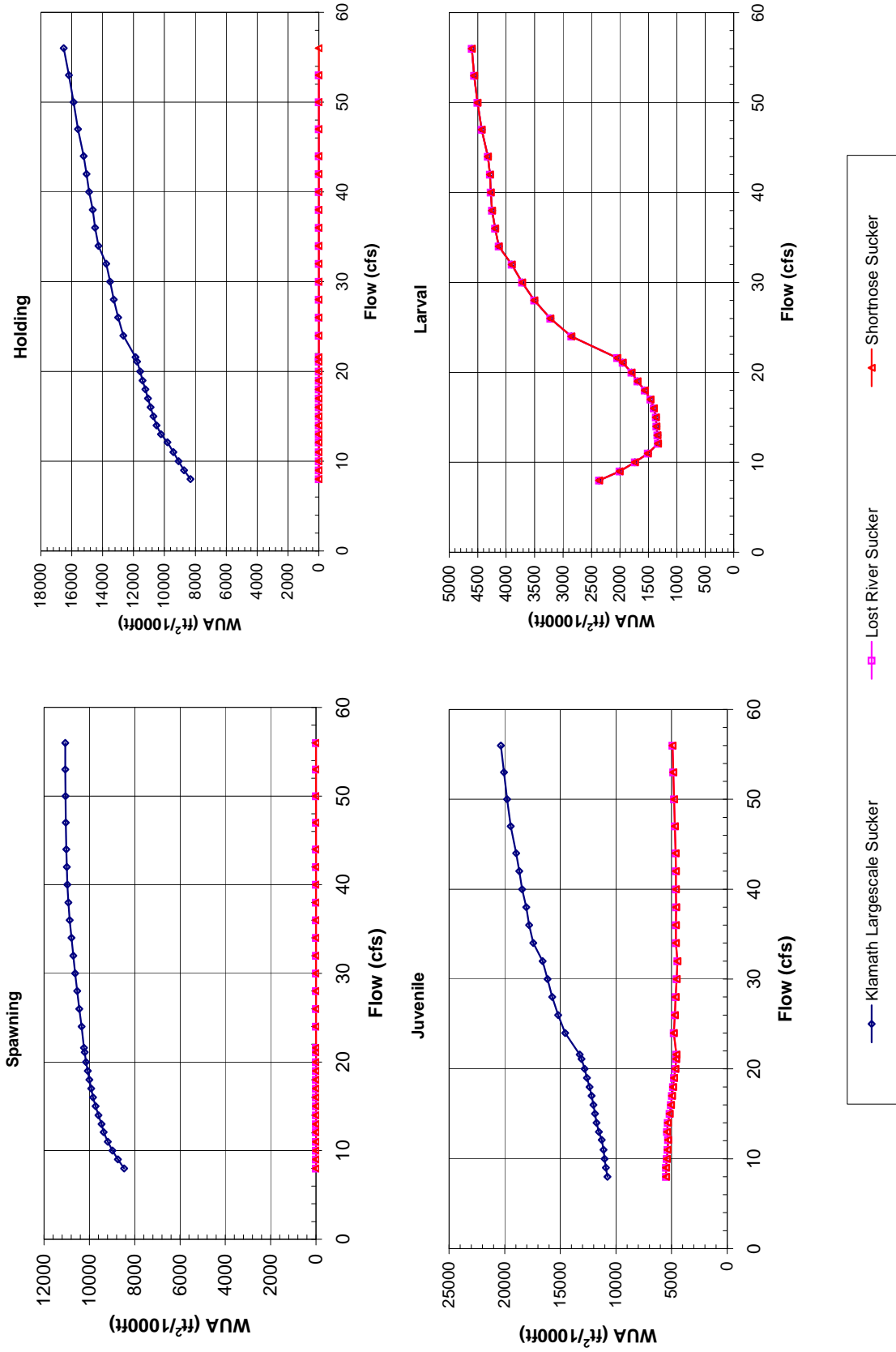
Unknown, "Ex. 280-US-467" (2009). *Hedden-Nicely Collection, All*. 505.
<https://digitalcommons.law.uidaho.edu/all/505>

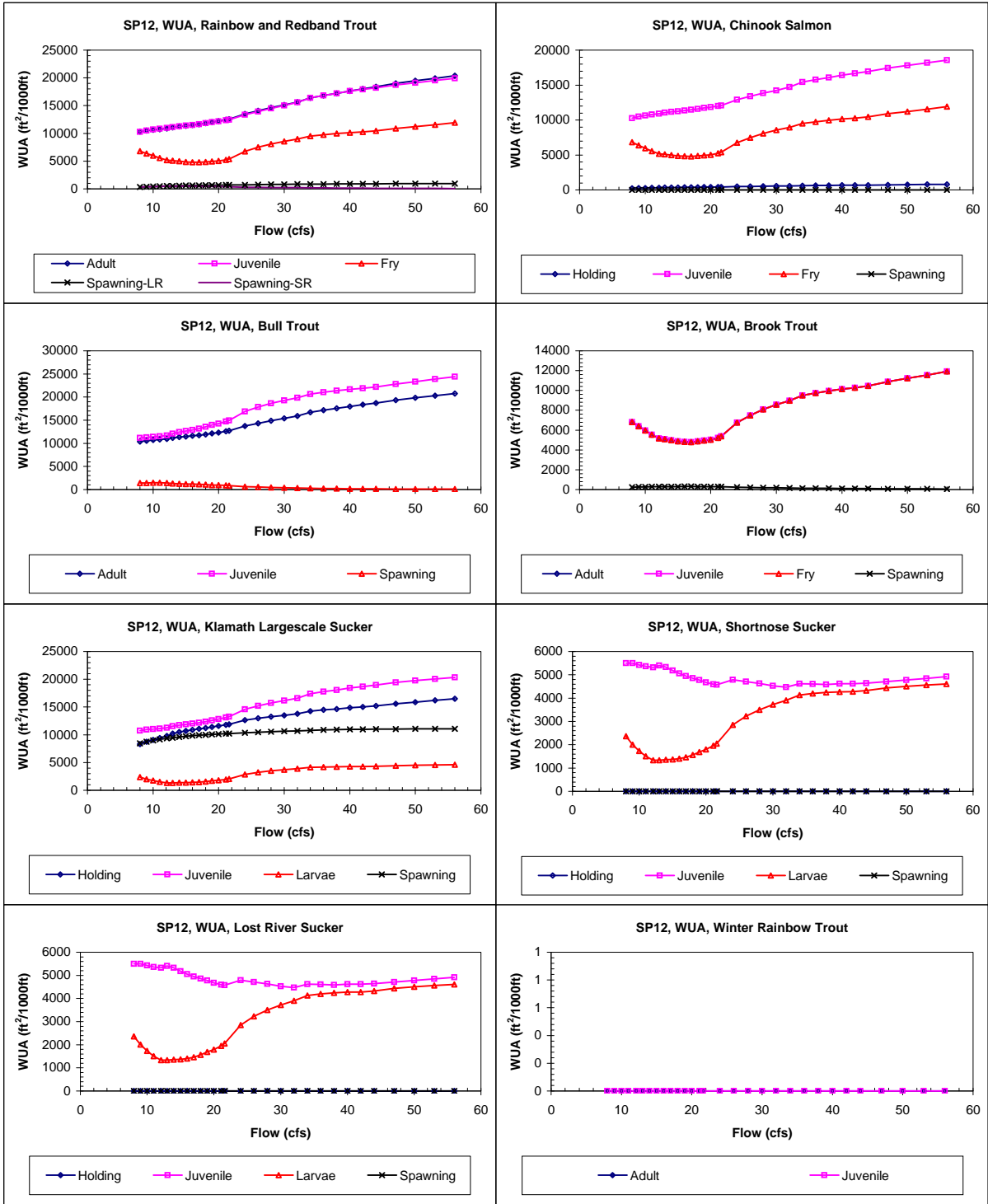
This Expert Report is brought to you for free and open access by the Hedden-Nicely at Digital Commons @ UIdaho Law. It has been accepted for inclusion in Hedden-Nicely Collection, All by an authorized administrator of Digital Commons @ UIdaho Law. For more information, please contact annablaine@uidaho.edu.

Site 652
Priority Species Habitat - Flow Curves



Site 652
 Priority Species Habitat - Flow Curves





Claim Reach 652 Sprague River, Site 12, Composite WUA

| | WUA (ft ² /1000ft) | | | | |
|------|-------------------------------|-------|----------|-------------|-------------|
| | Q (cfs) | Adult | Juvenile | Spawning - | |
| | | | | Large River | Small River |
| 8 | 10330 | 10263 | 6813 | 326 | 323 |
| 9 | 10505 | 10486 | 6381 | 375 | 364 |
| 10 | 10630 | 10675 | 5975 | 426 | 403 |
| 11 | 10750 | 10834 | 5546 | 469 | 433 |
| 12.1 | 10905 | 10966 | 5164 | 509 | 454 |
| 13 | 11091 | 11112 | 5077 | 528 | 451 |
| 14 | 11255 | 11260 | 4980 | 564 | 459 |
| 15 | 11378 | 11386 | 4866 | 596 | 466 |
| 16 | 11519 | 11523 | 4815 | 618 | 462 |
| 17 | 11667 | 11665 | 4800 | 637 | 450 |
| 18 | 11830 | 11829 | 4860 | 652 | 435 |
| 19 | 12023 | 12005 | 4949 | 668 | 419 |
| 20 | 12204 | 12163 | 5023 | 684 | 406 |
| 21.1 | 12437 | 12343 | 5228 | 701 | 390 |
| 21.6 | 12562 | 12442 | 5382 | 710 | 382 |
| 24 | 13512 | 13334 | 6761 | 732 | 306 |
| 26 | 14082 | 13922 | 7490 | 761 | 279 |
| 28 | 14615 | 14495 | 8083 | 789 | 257 |
| 30 | 15107 | 15013 | 8559 | 814 | 238 |
| 32 | 15633 | 15586 | 8961 | 837 | 220 |
| 34 | 16381 | 16400 | 9499 | 853 | 186 |
| 36 | 16842 | 16828 | 9752 | 871 | 169 |
| 38 | 17223 | 17196 | 9964 | 887 | 154 |
| 40 | 17649 | 17622 | 10134 | 899 | 138 |
| 42 | 18011 | 17939 | 10275 | 912 | 126 |
| 44 | 18377 | 18227 | 10449 | 923 | 115 |
| 47 | 18992 | 18733 | 10887 | 933 | 97 |
| 50 | 19491 | 19124 | 11226 | 943 | 83 |
| 53 | 19927 | 19521 | 11562 | 952 | 72 |
| 56 | 20374 | 19892 | 11912 | 962 | 65 |

| | WUA (ft ² /1000ft) | | | | |
|------|-------------------------------|---------|----------|-----|----------|
| | Q (cfs) | Holding | Juvenile | Fry | Spawning |
| | | | | | |
| 8 | 238 | 10258 | 6813 | 0 | |
| 9 | 254 | 10475 | 6381 | 0 | |
| 10 | 269 | 10650 | 5975 | 0 | |
| 11 | 284 | 10791 | 5546 | 0 | |
| 12.1 | 302 | 10900 | 5164 | 0 | |
| 13 | 322 | 11042 | 5077 | 0 | |
| 14 | 337 | 11169 | 4980 | 0 | |
| 15 | 349 | 11262 | 4866 | 0 | |
| 16 | 361 | 11367 | 4815 | 0 | |
| 17 | 373 | 11472 | 4800 | 0 | |
| 18 | 386 | 11600 | 4860 | 0 | |
| 19 | 399 | 11742 | 4949 | 0 | |
| 20 | 411 | 11852 | 5023 | 0 | |
| 21.1 | 424 | 11983 | 5228 | 0 | |
| 21.6 | 431 | 12061 | 5382 | 0 | |
| 24 | 478 | 12902 | 6761 | 0 | |
| 26 | 504 | 13380 | 7490 | 0 | |
| 28 | 528 | 13840 | 8083 | 0 | |
| 30 | 550 | 14240 | 8559 | 0 | |
| 32 | 572 | 14703 | 8961 | 0 | |
| 34 | 606 | 15450 | 9499 | 0 | |
| 36 | 626 | 15786 | 9752 | 0 | |
| 38 | 643 | 16063 | 9964 | 0 | |
| 40 | 663 | 16428 | 10134 | 0 | |
| 42 | 681 | 16694 | 10275 | 0 | |
| 44 | 698 | 16946 | 10449 | 0 | |
| 47 | 728 | 17426 | 10887 | 0 | |
| 50 | 754 | 17804 | 11226 | 0 | |
| 53 | 781 | 18189 | 11562 | 0 | |
| 56 | 808 | 18552 | 11912 | 0 | |

| | WUA (ft ² /1000ft) | | | |
|------|-------------------------------|-------|----------|----------|
| | Q (cfs) | Adult | Juvenile | Spawning |
| | | | | |
| 8 | 10402 | 11179 | 1414 | |
| 9 | 10573 | 11303 | 1453 | |
| 10 | 10695 | 11416 | 1477 | |
| 11 | 10815 | 11512 | 1471 | |
| 12.1 | 10971 | 11704 | 1422 | |
| 13 | 11169 | 12084 | 1322 | |
| 14 | 11342 | 12413 | 1263 | |
| 15 | 11469 | 12647 | 1226 | |
| 16 | 11616 | 12908 | 1175 | |
| 17 | 11770 | 13201 | 1119 | |
| 18 | 11941 | 13560 | 1059 | |
| 19 | 12147 | 13951 | 997 | |
| 20 | 12337 | 14271 | 948 | |
| 21.1 | 12584 | 14705 | 886 | |
| 21.6 | 12715 | 14950 | 856 | |
| 24 | 13733 | 16874 | 636 | |
| 26 | 14329 | 17839 | 542 | |
| 28 | 14881 | 18627 | 464 | |
| 30 | 15383 | 19286 | 401 | |
| 32 | 15917 | 19867 | 346 | |
| 34 | 16692 | 20649 | 267 | |
| 36 | 17161 | 21040 | 230 | |
| 38 | 17549 | 21369 | 203 | |
| 40 | 17987 | 21655 | 177 | |
| 42 | 18355 | 21898 | 159 | |
| 44 | 18726 | 22208 | 144 | |
| 47 | 19350 | 22838 | 121 | |
| 50 | 19856 | 23350 | 104 | |
| 53 | 20297 | 23876 | 96 | |
| 56 | 20748 | 24400 | 94 | |

| | WUA (ft ² /1000ft) | | | |
|------|-------------------------------|-------|----------|----------|
| | Q (cfs) | Adult | Juvenile | Spawning |
| | | | | |
| 8 | 6813 | 6813 | 6813 | 234 |
| 9 | 6381 | 6381 | 6381 | 254 |
| 10 | 5975 | 5975 | 5975 | 274 |
| 11 | 5546 | 5546 | 5546 | 288 |
| 12.1 | 5164 | 5164 | 5164 | 297 |
| 13 | 5077 | 5077 | 5077 | 290 |
| 14 | 4980 | 4980 | 4980 | 294 |
| 15 | 4866 | 4866 | 4866 | 303 |
| 16 | 4815 | 4815 | 4815 | 307 |
| 17 | 4800 | 4800 | 4800 | 308 |
| 18 | 4860 | 4860 | 4860 | 306 |
| 19 | 4949 | 4949 | 4949 | 300 |
| 20 | 5023 | 5023 | 5023 | 297 |
| 21.1 | 5228 | 5228 | 5228 | 289 |
| 21.6 | 5382 | 5382 | 5382 | 284 |
| 24 | 6761 | 6761 | 6761 | 227 |
| 26 | 7490 | 7490 | 7490 | 208 |
| 28 | 8083 | 8083 | 8083 | 192 |
| 30 | 8559 | 8559 | 8559 | 179 |
| 32 | 8961 | 8961 | 8961 | 166 |
| 34 | 9499 | 9499 | 9499 | 139 |
| 36 | 9752 | 9752 | 9752 | 129 |
| 38 | 9964 | 9964 | 9964 | 120 |
| 40 | 10134 | 10134 | 10134 | 110 |
| 42 | 10275 | 10275 | 10275 | 103 |
| 44 | 10449 | 10449 | 10449 | 96 |
| 47 | 10887 | 10887 | 10887 | 84 |
| 50 | 11226 | 11226 | 11226 | 75 |
| 53 | 11562 | 11562 | 11562 | 68 |
| 56 | 11912 | 11912 | 11912 | 61 |

Claim Reach 652 Sprague River, Site 12, Composite WUA

| | WUA (ft ² /1000ft) | | | | |
|---------------------------|-------------------------------|---------|----------|--------|----------|
| | Q (cfs) | Holding | Juvenile | Larvae | Spawning |
| Klamath Largescale Sucker | 8 | 8320 | 10761 | 2365 | 8464 |
| | 9 | 8739 | 10913 | 2005 | 8744 |
| | 10 | 9078 | 11015 | 1737 | 8977 |
| | 11 | 9416 | 11124 | 1511 | 9187 |
| | 12.1 | 9809 | 11284 | 1332 | 9366 |
| | 13 | 10233 | 11536 | 1339 | 9466 |
| | 14 | 10518 | 11745 | 1359 | 9597 |
| | 15 | 10706 | 11878 | 1368 | 9723 |
| | 16 | 10893 | 12029 | 1402 | 9833 |
| | 17 | 11065 | 12188 | 1462 | 9922 |
| | 18 | 11236 | 12373 | 1565 | 10002 |
| | 19 | 11423 | 12615 | 1691 | 10070 |
| | 20 | 11575 | 12824 | 1795 | 10142 |
| | 21.1 | 11766 | 13103 | 1953 | 10208 |
| | 21.6 | 11866 | 13251 | 2048 | 10236 |
| | 24 | 12661 | 14568 | 2855 | 10345 |
| | 26 | 12998 | 15201 | 3224 | 10439 |
| | 28 | 13283 | 15727 | 3503 | 10531 |
| | 30 | 13515 | 16147 | 3720 | 10625 |
| | 32 | 13762 | 16592 | 3901 | 10709 |
| | 34 | 14278 | 17419 | 4130 | 10790 |
| | 36 | 14497 | 17792 | 4195 | 10865 |
| | 38 | 14649 | 18063 | 4246 | 10926 |
| | 40 | 14877 | 18430 | 4272 | 10966 |
| | 42 | 15042 | 18693 | 4283 | 10990 |
| | 44 | 15229 | 18958 | 4319 | 11011 |
| | 47 | 15594 | 19446 | 4433 | 11040 |
| | 50 | 15886 | 19783 | 4504 | 11056 |
| | 53 | 16190 | 20061 | 4564 | 11064 |
| | 56 | 16515 | 20347 | 4604 | 11056 |

| | WUA (ft ² /1000ft) | | | | |
|------------------|-------------------------------|---------|----------|--------|----------|
| | Q (cfs) | Holding | Juvenile | Larvae | Spawning |
| Shorthead Sucker | 8 | 0 | 5498 | 2365 | 0 |
| | 9 | 0 | 5499 | 2005 | 0 |
| | 10 | 0 | 5428 | 1737 | 0 |
| | 11 | 0 | 5362 | 1511 | 0 |
| | 12.1 | 0 | 5323 | 1332 | 0 |
| | 13 | 0 | 5405 | 1339 | 0 |
| | 14 | 0 | 5329 | 1359 | 0 |
| | 15 | 0 | 5181 | 1368 | 0 |
| | 16 | 0 | 5058 | 1402 | 0 |
| | 17 | 0 | 4952 | 1462 | 0 |
| | 18 | 0 | 4859 | 1565 | 0 |
| | 19 | 0 | 4780 | 1691 | 0 |
| | 20 | 0 | 4671 | 1795 | 0 |
| | 21.1 | 0 | 4596 | 1953 | 0 |
| | 21.6 | 0 | 4570 | 2048 | 0 |
| | 24 | 0 | 4790 | 2855 | 0 |
| | 26 | 0 | 4713 | 3224 | 0 |
| | 28 | 0 | 4628 | 3503 | 0 |
| | 30 | 0 | 4532 | 3720 | 0 |
| | 32 | 0 | 4476 | 3901 | 0 |
| | 34 | 0 | 4619 | 4130 | 0 |
| | 36 | 0 | 4604 | 4195 | 0 |
| | 38 | 0 | 4585 | 4246 | 0 |
| | 40 | 0 | 4622 | 4272 | 0 |
| | 42 | 0 | 4623 | 4283 | 0 |
| | 44 | 0 | 4639 | 4319 | 0 |
| | 47 | 0 | 4713 | 4433 | 0 |
| | 50 | 0 | 4777 | 4504 | 0 |
| | 53 | 0 | 4846 | 4564 | 0 |
| | 56 | 0 | 4921 | 4604 | 0 |

| | WUA (ft ² /1000ft) | | | | |
|-------------------|-------------------------------|---------|----------|--------|----------|
| | Q (cfs) | Holding | Juvenile | Larvae | Spawning |
| Lost River Sucker | 8 | 0 | 5498 | 2365 | 0 |
| | 9 | 0 | 5499 | 2005 | 0 |
| | 10 | 0 | 5428 | 1737 | 0 |
| | 11 | 0 | 5362 | 1511 | 0 |
| | 12.1 | 0 | 5323 | 1332 | 0 |
| | 13 | 0 | 5405 | 1339 | 0 |
| | 14 | 0 | 5329 | 1359 | 0 |
| | 15 | 0 | 5181 | 1368 | 0 |
| | 16 | 0 | 5058 | 1402 | 0 |
| | 17 | 0 | 4952 | 1462 | 0 |
| | 18 | 0 | 4859 | 1565 | 0 |
| | 19 | 0 | 4780 | 1691 | 0 |
| | 20 | 0 | 4671 | 1795 | 0 |
| | 21.1 | 0 | 4596 | 1953 | 0 |
| | 21.6 | 0 | 4570 | 2048 | 0 |
| | 24 | 0 | 4790 | 2855 | 0 |
| | 26 | 0 | 4713 | 3224 | 0 |
| | 28 | 0 | 4628 | 3503 | 0 |
| | 30 | 0 | 4532 | 3720 | 0 |
| | 32 | 0 | 4476 | 3901 | 0 |
| | 34 | 0 | 4619 | 4130 | 0 |
| | 36 | 0 | 4604 | 4195 | 0 |
| | 38 | 0 | 4585 | 4246 | 0 |
| | 40 | 0 | 4622 | 4272 | 0 |
| | 42 | 0 | 4623 | 4283 | 0 |
| | 44 | 0 | 4639 | 4319 | 0 |
| | 47 | 0 | 4713 | 4433 | 0 |
| | 50 | 0 | 4777 | 4504 | 0 |
| | 53 | 0 | 4846 | 4564 | 0 |
| | 56 | 0 | 4921 | 4604 | 0 |

| | WUA (ft ² /1000ft) | | | | |
|----------------------|-------------------------------|-------|----------|-----|----------|
| | Q (cfs) | Adult | Juvenile | Fry | Spawning |
| Winter Rainbow Trout | 8 | 0 | 0 | | |
| | 9 | 0 | 0 | | |
| | 10 | 0 | 0 | | |
| | 11 | 0 | 0 | | |
| | 12.1 | 0 | 0 | | |
| | 13 | 0 | 0 | | |
| | 14 | 0 | 0 | | |
| | 15 | 0 | 0 | | |
| | 16 | 0 | 0 | | |
| | 17 | 0 | 0 | | |
| | 18 | 0 | 0 | | |
| | 19 | 0 | 0 | | |
| | 20 | 0 | 0 | | |
| | 21.1 | 0 | 0 | | |
| | 21.6 | 0 | 0 | | |
| | 24 | 0 | 0 | | |
| | 26 | 0 | 0 | | |
| | 28 | 0 | 0 | | |
| | 30 | 0 | 0 | | |
| | 32 | 0 | 0 | | |
| | 34 | 0 | 0 | | |
| | 36 | 0 | 0 | | |
| | 38 | 0 | 0 | | |
| | 40 | 0 | 0 | | |
| | 42 | 0 | 0 | | |
| | 44 | 0 | 0 | | |
| | 47 | 0 | 0 | | |
| | 50 | 0 | 0 | | |
| | 53 | 0 | 0 | | |
| | 56 | 0 | 0 | | |