

12-4-2009

Ex. 281-US-426

Unknown

Follow this and additional works at: <https://digitalcommons.law.uidaho.edu/all>

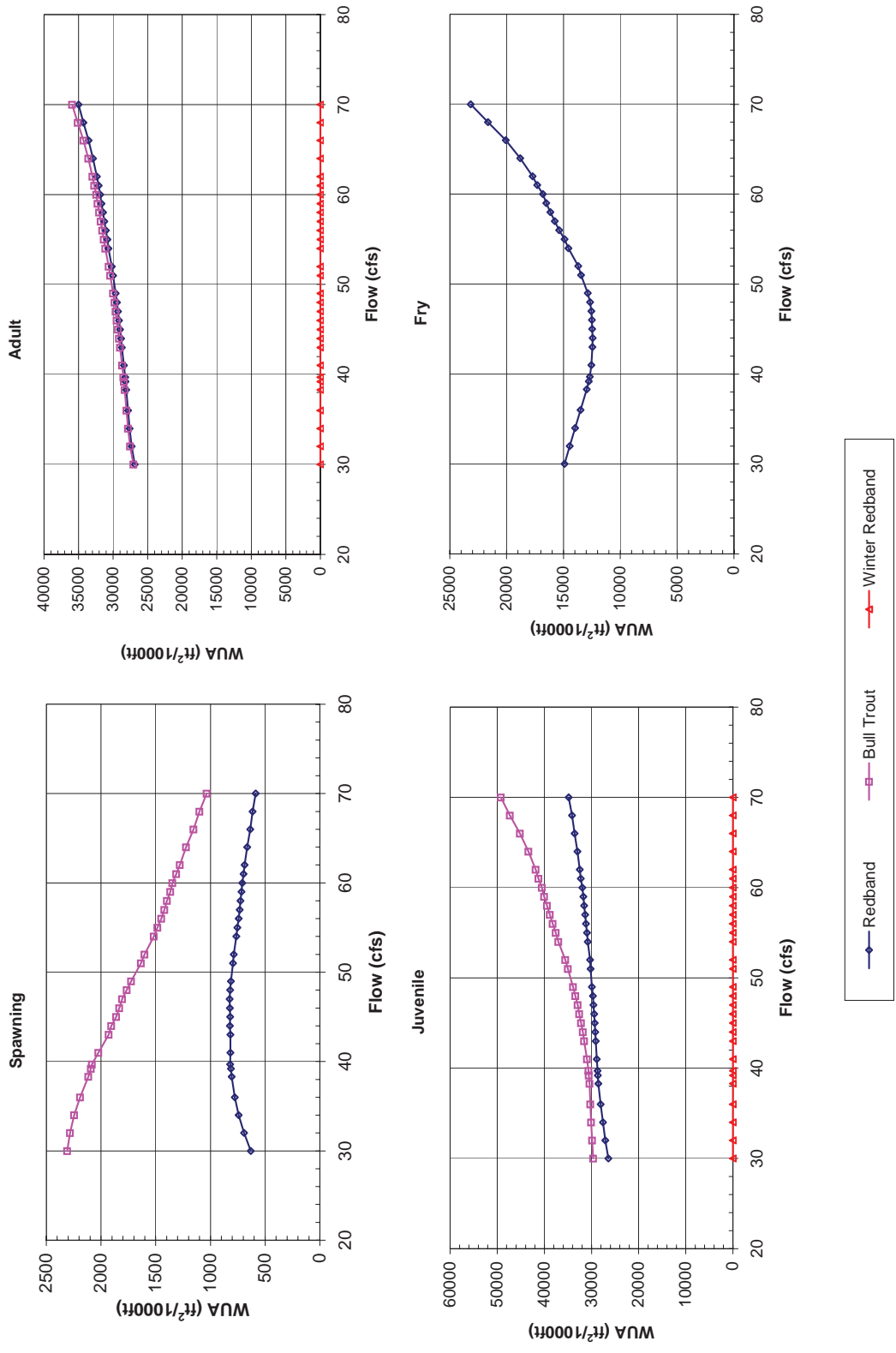
---

### Recommended Citation

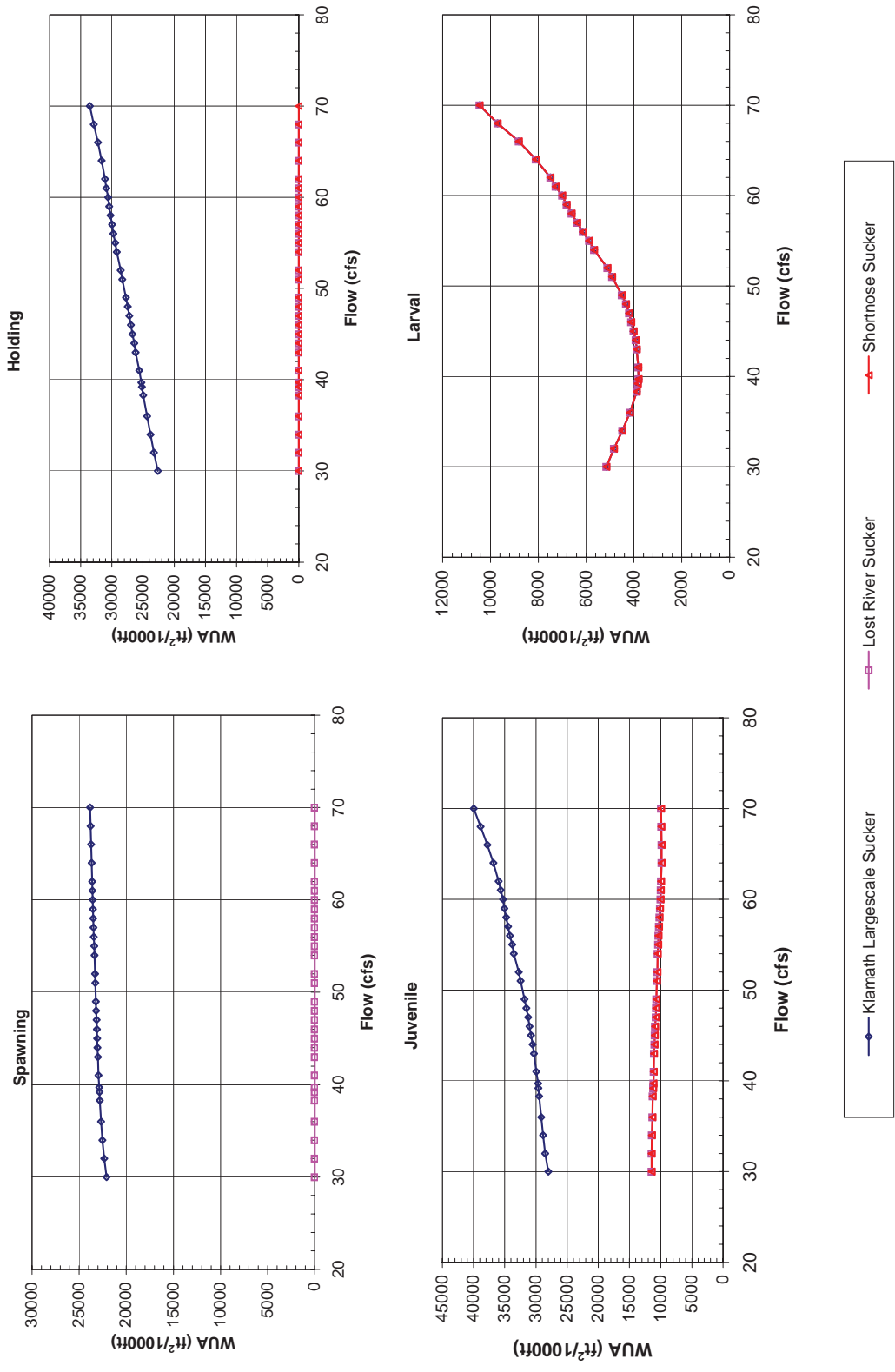
Unknown, "Ex. 281-US-426" (2009). *Hedden-Nicely Collection, All*. 549.  
<https://digitalcommons.law.uidaho.edu/all/549>

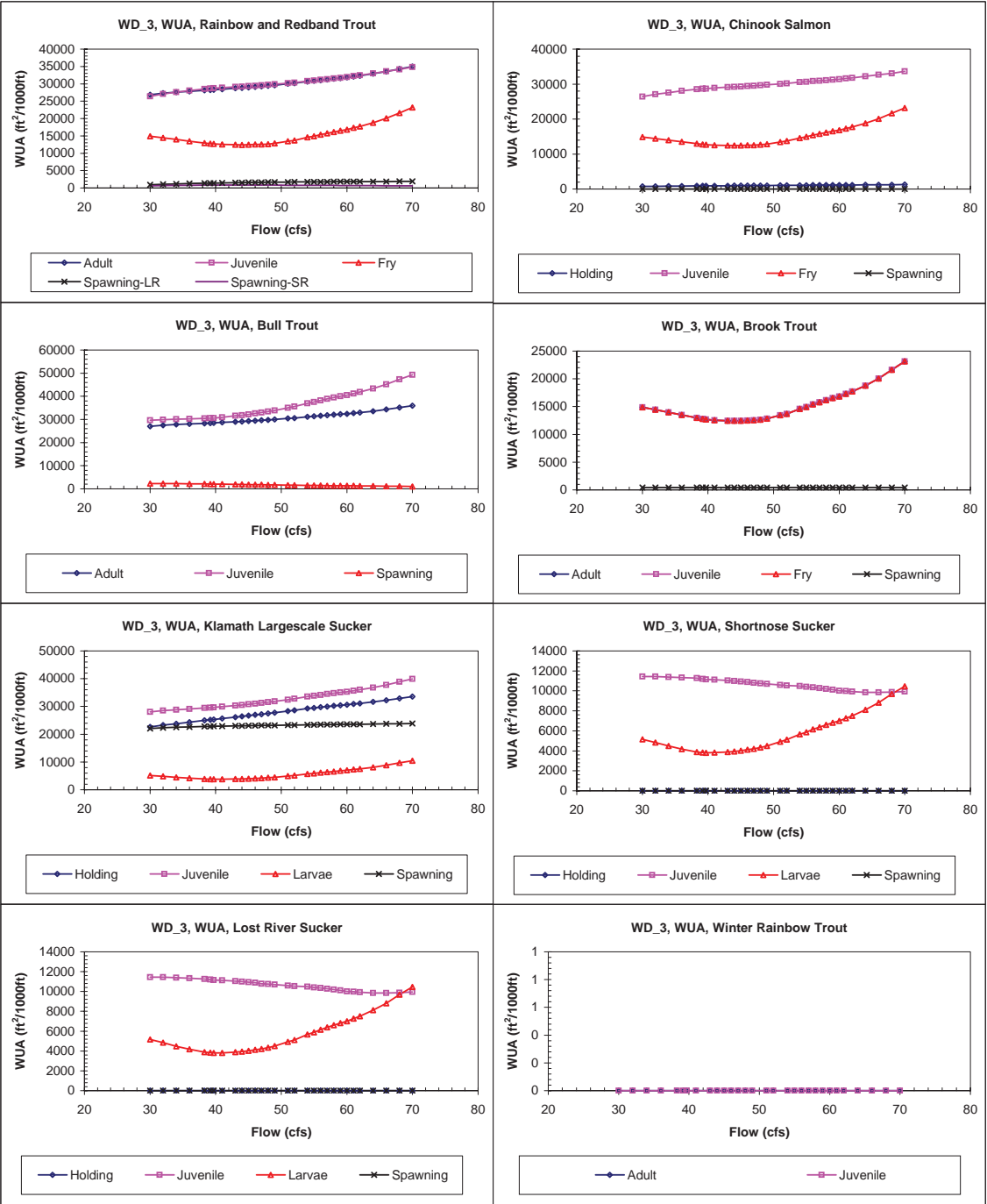
This Expert Report is brought to you for free and open access by the Hedden-Nicely at Digital Commons @ UIdaho Law. It has been accepted for inclusion in Hedden-Nicely Collection, All by an authorized administrator of Digital Commons @ UIdaho Law. For more information, please contact [annablaine@uidaho.edu](mailto:annablaine@uidaho.edu).

Site WD 3  
Priority Species Habitat - Flow Curves



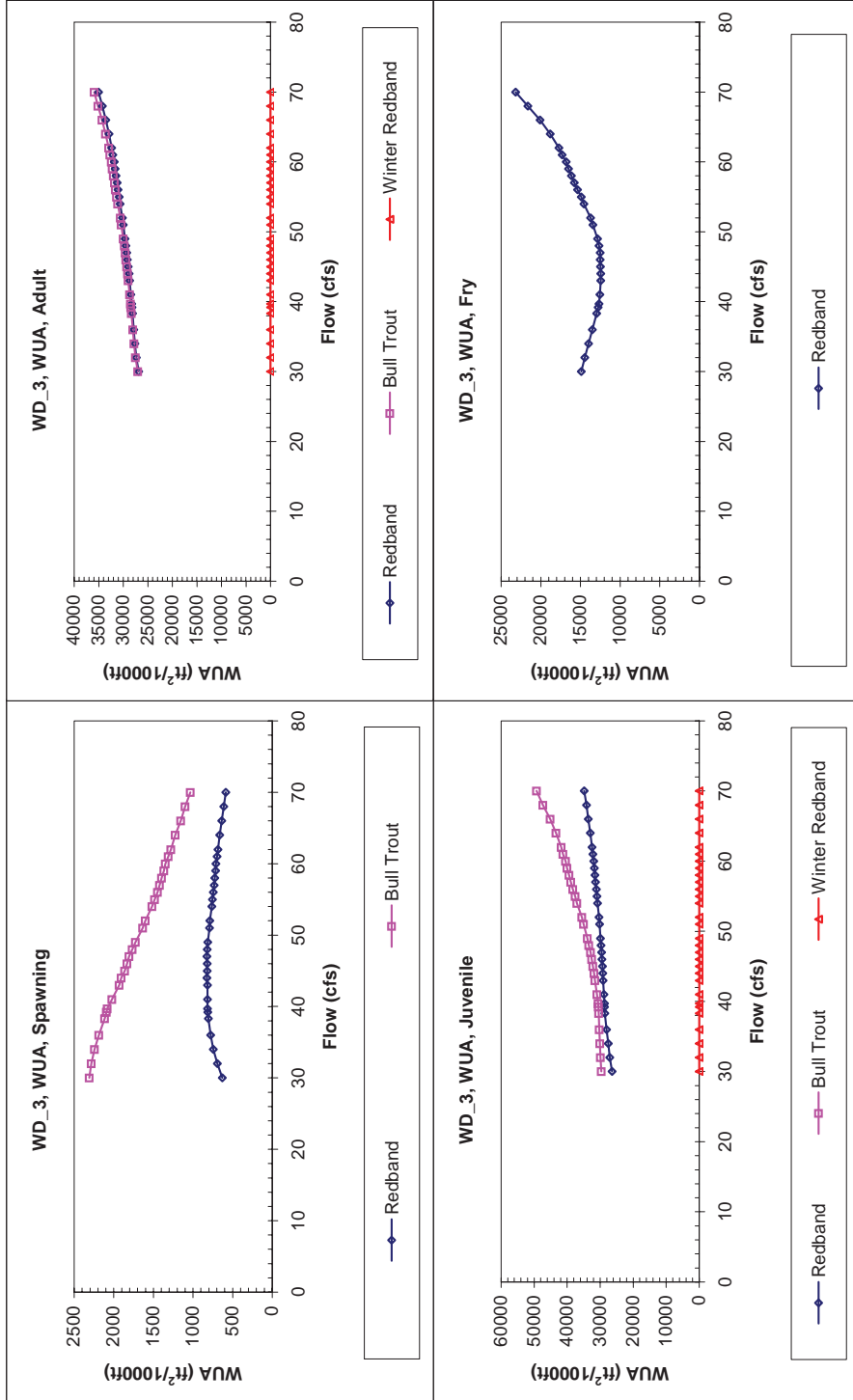
### Site WD 3 Priority Species Habitat - Flow Curves





SITE WD 3

PRIORITY SPECIES HABITAT - FLOW CURVES



Claim Reach 669 Wood River, Site 3, Composite WUA

	WUA (ft <sup>2</sup> /1000ft)				
	Q (cfs)	Adult	Juvenile	Spawning -	
				Large River	Small River
30	26875	26419	14896	934	631
32	27327	27070	14442	1053	693
34	27614	27578	13966	1163	743
36	27843	28056	13492	1259	777
38.3	28113	28549	12961	1352	805
39.2	28213	28671	12782	1387	813
39.7	28265	28714	12680	1407	819
41	28449	28883	12552	1442	818
43	28718	29095	12463	1498	818
44	28843	29200	12433	1533	823
45	28996	29324	12472	1559	821
46	29146	29451	12511	1589	822
47	29282	29579	12536	1619	826
48	29440	29722	12653	1644	820
49	29618	29895	12854	1663	814
51	30000	30192	13442	1701	793
52	30187	30318	13708	1719	787
54	30655	30781	14571	1742	764
55	30838	30967	14906	1755	754
56	31060	31186	15383	1767	742
57	31259	31365	15773	1783	733
58	31463	31552	16158	1796	726
59	31671	31748	16524	1807	716
60	31849	31938	16813	1820	710
61	32108	32243	17311	1827	698
62	32345	32490	17721	1833	687
64	32894	33006	18797	1845	665
66	33543	33575	20078	1855	637
68	34276	34119	21633	1865	614
70	35013	34847	23167	1873	587

	WUA (ft <sup>2</sup> /1000ft)				
	Q (cfs)	Holding	Juvenile	Spawning	
				Fry	
30	743	26419	14896	0	
32	778	27070	14442	0	
34	810	27578	13966	0	
36	841	28056	13492	0	
38.3	877	28549	12961	0	
39.2	888	28671	12782	0	
39.7	893	28714	12680	0	
41	912	28883	12552	0	
43	939	29095	12463	0	
44	951	29192	12433	0	
45	964	29311	12472	0	
46	976	29429	12511	0	
47	986	29545	12536	0	
48	999	29672	12653	0	
49	1011	29825	12854	0	
51	1037	30067	13442	0	
52	1047	30156	13708	0	
54	1076	30543	14571	0	
55	1086	30673	14906	0	
56	1098	30845	15383	0	
57	1109	30971	15773	0	
58	1119	31100	16158	0	
59	1130	31238	16524	0	
60	1139	31364	16813	0	
61	1153	31619	17311	0	
62	1164	31808	17721	0	
64	1188	32206	18797	0	
66	1214	32654	20078	0	
68	1238	33078	21633	0	
70	1267	33684	23167	0	

	WUA (ft <sup>2</sup> /1000ft)			
	Q (cfs)	Adult	Juvenile	Spawning
30	27066	29622	2310	
32	27527	29891	2284	
34	27820	30080	2245	
36	28057	30227	2190	
38.3	28338	30437	2116	
39.2	28443	30549	2092	
39.7	28497	30618	2084	
41	28695	30948	2023	
43	28988	31546	1931	
44	29126	31831	1906	
45	29295	32215	1862	
46	29461	32592	1832	
47	29611	32947	1806	
48	29787	33394	1765	
49	29985	33894	1725	
51	30410	35025	1636	
52	30617	35575	1601	
54	31137	37011	1518	
55	31339	37557	1485	
56	31584	38248	1450	
57	31801	38849	1422	
58	32024	39439	1396	
59	32251	40016	1366	
60	32444	40502	1347	
61	32727	41223	1312	
62	32985	41825	1280	
64	33591	43366	1224	
66	34308	45153	1154	
68	35120	47307	1099	
70	35929	49248	1035	

	WUA (ft <sup>2</sup> /1000ft)				
	Q (cfs)	Adult	Juvenile	Fry	Spawning
30	14896	14896	14896	434	
32	14442	14442	14442	438	
34	13966	13966	13966	442	
36	13492	13492	13492	443	
38.3	12961	12961	12961	443	
39.2	12782	12782	12782	445	
39.7	12680	12680	12680	448	
41	12552	12552	12552	447	
43	12463	12463	12463	445	
44	12433	12433	12433	447	
45	12472	12472	12472	446	
46	12511	12511	12511	447	
47	12536	12536	12536	449	
48	12653	12653	12653	448	
49	12854	12854	12854	447	
51	13442	13442	13442	444	
52	13708	13708	13708	445	
54	14571	14571	14571	441	
55	14906	14906	14906	441	
56	15383	15383	15383	439	
57	15773	15773	15773	439	
58	16158	16158	16158	440	
59	16524	16524	16524	439	
60	16813	16813	16813	441	
61	17311	17311	17311	438	
62	17721	17721	17721	436	
64	18797	18797	18797	432	
66	20078	20078	20078	423	
68	21633	21633	21633	417	
70	23167	23167	23167	407	

Claim Reach 669 Wood River, Site 3, Composite WUA

	WUA (ft <sup>2</sup> /1000ft)				
	Q (cfs)	Holding	Juvenile	Larvae	Spawning
Klamath Largescale Sucker	30	22624	28021	5155	22093
	32	23260	28531	4831	22354
	34	23810	28849	4484	22532
	36	24363	29127	4167	22670
	38.3	24960	29464	3885	22800
	39.2	25166	29598	3834	22849
	39.7	25254	29661	3810	22877
	41	25622	29924	3818	22939
	43	26170	30338	3885	23015
	44	26411	30538	3927	23049
	45	26688	30789	4016	23085
	46	26952	31036	4113	23119
	47	27181	31255	4201	23155
	48	27450	31521	4335	23188
	49	27731	31818	4502	23223
	51	28321	32457	4911	23288
	52	28586	32758	5112	23318
	54	29234	33533	5663	23377
	55	29457	33812	5869	23409
	56	29740	34165	6142	23439
	57	29976	34461	6375	23467
	58	30213	34760	6603	23498
	59	30429	35055	6818	23529
	60	30614	35291	7000	23559
	61	30893	35667	7276	23588
	62	31114	35994	7497	23619
	64	31640	36805	8108	23677
	66	32238	37775	8818	23735
	68	32901	38886	9700	23791
	70	33543	39968	10462	23847

	WUA (ft <sup>2</sup> /1000ft)				
	Q (cfs)	Holding	Juvenile	Larvae	Spawning
Shortnose Sucker	30	0	11435	5155	0
	32	0	11437	4831	0
	34	0	11389	4484	0
	36	0	11339	4167	0
	38.3	0	11270	3885	0
	39.2	0	11201	3834	0
	39.7	0	11139	3810	0
	41	0	11113	3818	0
	43	0	11053	3885	0
	44	0	10979	3927	0
	45	0	10949	4016	0
	46	0	10884	4113	0
	47	0	10792	4201	0
	48	0	10741	4335	0
	49	0	10691	4502	0
	51	0	10601	4911	0
	52	0	10532	5112	0
	54	0	10493	5663	0
	55	0	10401	5869	0
	56	0	10356	6142	0
	57	0	10276	6375	0
	58	0	10201	6603	0
	59	0	10125	6818	0
	60	0	10015	7000	0
	61	0	9990	7276	0
	62	0	9930	7497	0
	64	0	9855	8108	0
	66	0	9854	8818	0
	68	0	9882	9700	0
	70	0	9942	10462	0

	WUA (ft <sup>2</sup> /1000ft)				
	Q (cfs)	Holding	Juvenile	Larvae	Spawning
Lost River Sucker	30	0	11435	5155	0
	32	0	11437	4831	0
	34	0	11389	4484	0
	36	0	11339	4167	0
	38.3	0	11270	3885	0
	39.2	0	11201	3834	0
	39.7	0	11139	3810	0
	41	0	11113	3818	0
	43	0	11053	3885	0
	44	0	10979	3927	0
	45	0	10949	4016	0
	46	0	10884	4113	0
	47	0	10792	4201	0
	48	0	10741	4335	0
	49	0	10691	4502	0
	51	0	10601	4911	0
	52	0	10532	5112	0
	54	0	10493	5663	0
	55	0	10401	5869	0
	56	0	10356	6142	0
	57	0	10276	6375	0
	58	0	10201	6603	0
	59	0	10125	6818	0
	60	0	10015	7000	0
	61	0	9990	7276	0
	62	0	9930	7497	0
	64	0	9855	8108	0
	66	0	9854	8818	0
	68	0	9882	9700	0
	70	0	9942	10462	0

	WUA (ft <sup>2</sup> /1000ft)		
	Q (cfs)	Adult	Juvenile
Winter Rainbow Trout	30	0	0
	32	0	0
	34	0	0
	36	0	0
	38.3	0	0
	39.2	0	0
	39.7	0	0
	41	0	0
	43	0	0
	44	0	0
	45	0	0
	46	0	0
	47	0	0
	48	0	0
	49	0	0
	51	0	0
	52	0	0
	54	0	0
	55	0	0
	56	0	0
	57	0	0
	58	0	0
	59	0	0
	60	0	0
	61	0	0
	62	0	0
	64	0	0
	66	0	0
	68	0	0
	70	0	0